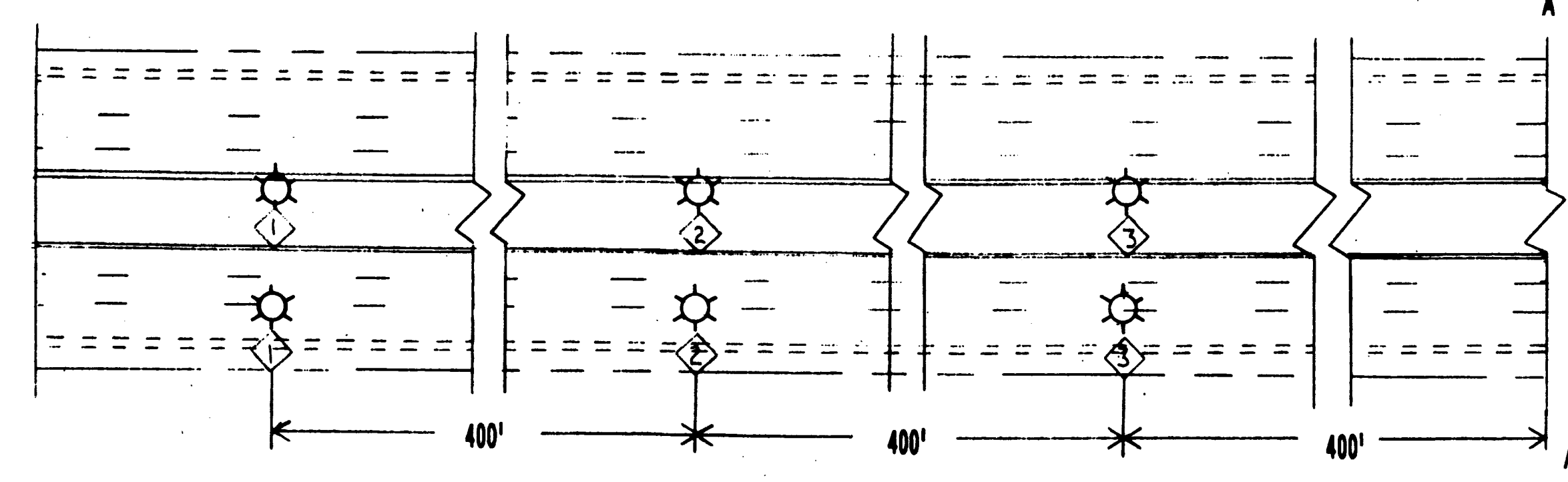
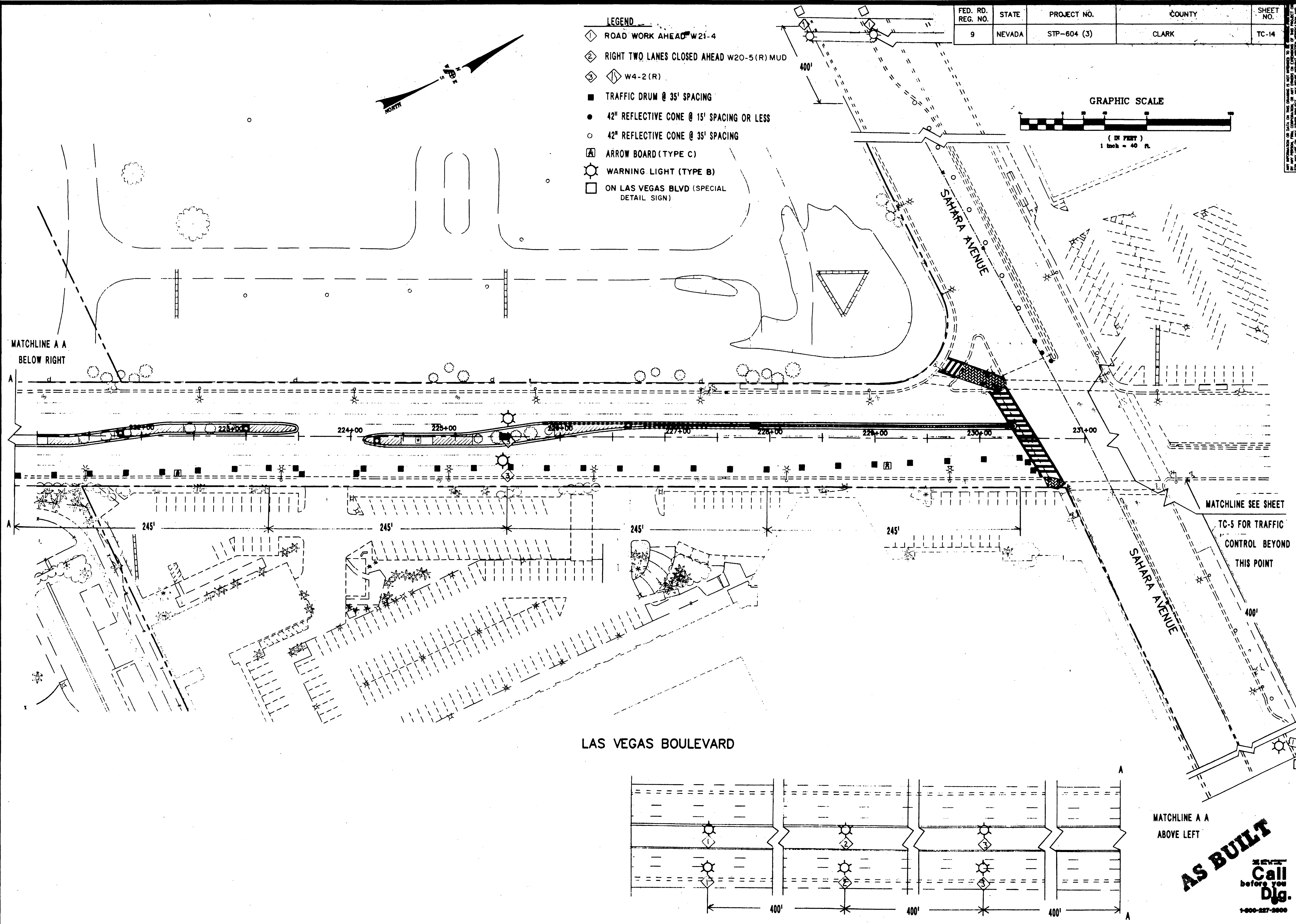
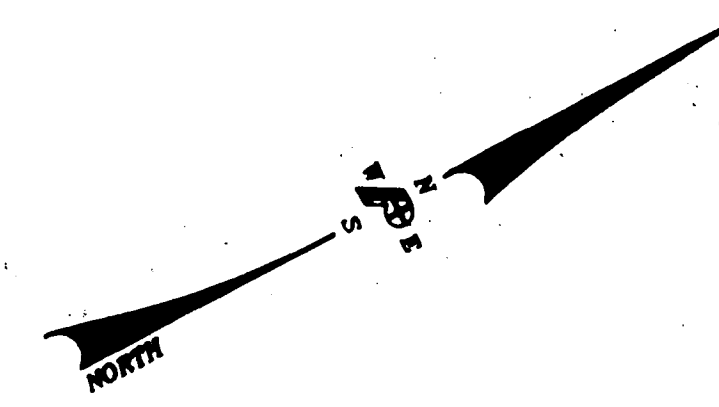
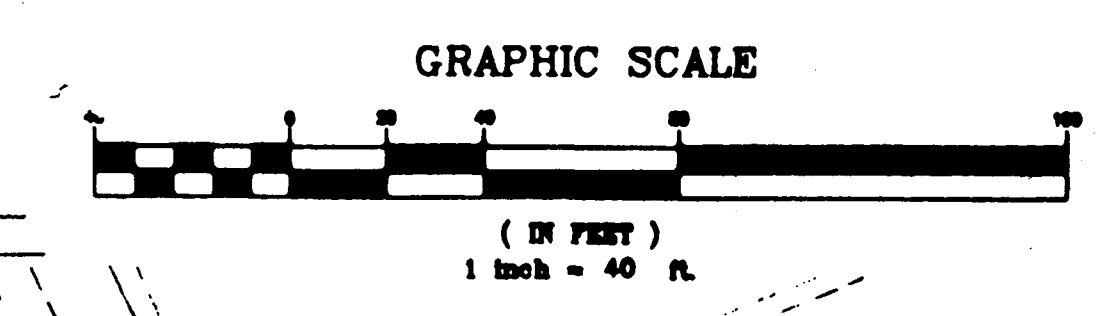


FED. RD. REG. NO.	STATE	PROJECT NO.	COUNTY	SHEET NO.
9	NEVADA	STP-604 (3)	CLARK	TC-14

- LEGEND**
- ◇ ROAD WORK AHEAD W21-4
 - ② RIGHT TWO LANES CLOSED AHEAD W20-5(R) MUD
 - ③ ◇ W4-2 (R)
 - TRAFFIC DRUM @ 35' SPACING
 - 42" REFLECTIVE CONE @ 15' SPACING OR LESS
 - 42" REFLECTIVE CONE @ 35' SPACING
 - Ⓐ ARROW BOARD (TYPE C)
 - ⊙ WARNING LIGHT (TYPE B)
 - ON LAS VEGAS BLVD (SPECIAL DETAIL SIGN)



MATCHLINE A A
BELOW RIGHT

MATCHLINE SEE SHEET
TC-5 FOR TRAFFIC
CONTROL BEYOND
THIS POINT

MATCHLINE A A
ABOVE LEFT

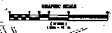
AS BUILT

NEVADA
Call
before you
Dig.
1-800-227-2800

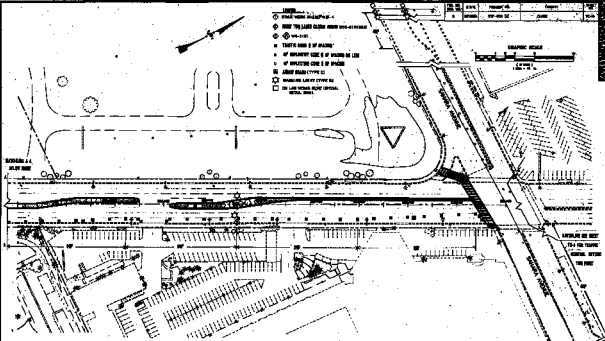
DATE	REVISIONS	DRAWN BY RAP	CHECKED BY TEP	PLANNERS
		DESIGNED BY DWS	DATE 04-21-95	SURVEYORS
		ENGINEERS		
JOB NUMBER 94144	SHEET #			
DEPARTMENT OF PUBLIC WORKS SAHARA AVENUE TO OAKLEY BOULEVARD DOWNTOWN ENTRY CORRIDOR IMPROVEMENTS TRAFFIC CONTROL PLAN				
DRAWING NO. TC-14		39/52		

- LEGEND
- SPARK LIGHTS (SEE PAGE 4)
 - MARK THE LANE CLOSURE WHEN WORK IS STOPPED
 - 100-1100
 - TRAFFIC SIGN 2 OF PLACING
 - IF IMPLEMENT CODE 2 OF PLACING OR LEM
 - IF IMPLEMENT CODE 2 OF PLACING
 - ADJUST SIGN (TYPE 12)
 - SIGNAGE LIGHT (TYPE 20)
 - ON LAS VEGAS BULVARD (OPTIONAL METAL SIGN)

NO. 10	DATE	PROJECT NO.	OWNER
8	10/10/68	107-42288F	CDOT



SECTION A-1
SEE PLAN



LAS VEGAS BOULEVARD

SECTION A-2
SEE PLAN

AS BUILT

DESIGNED BY: []
 DRAWN BY: []
 CHECKED BY: []
 APPROVED BY: []
 PROJECT NUMBER: 107-42288F
 DATE: 10/10/68

DEPARTMENT OF PUBLIC WORKS
 DIVISION OF TRAFFIC CONTROL
 TRAFFIC CONTROL UNIT