

LVVWD STANDARD NOTES

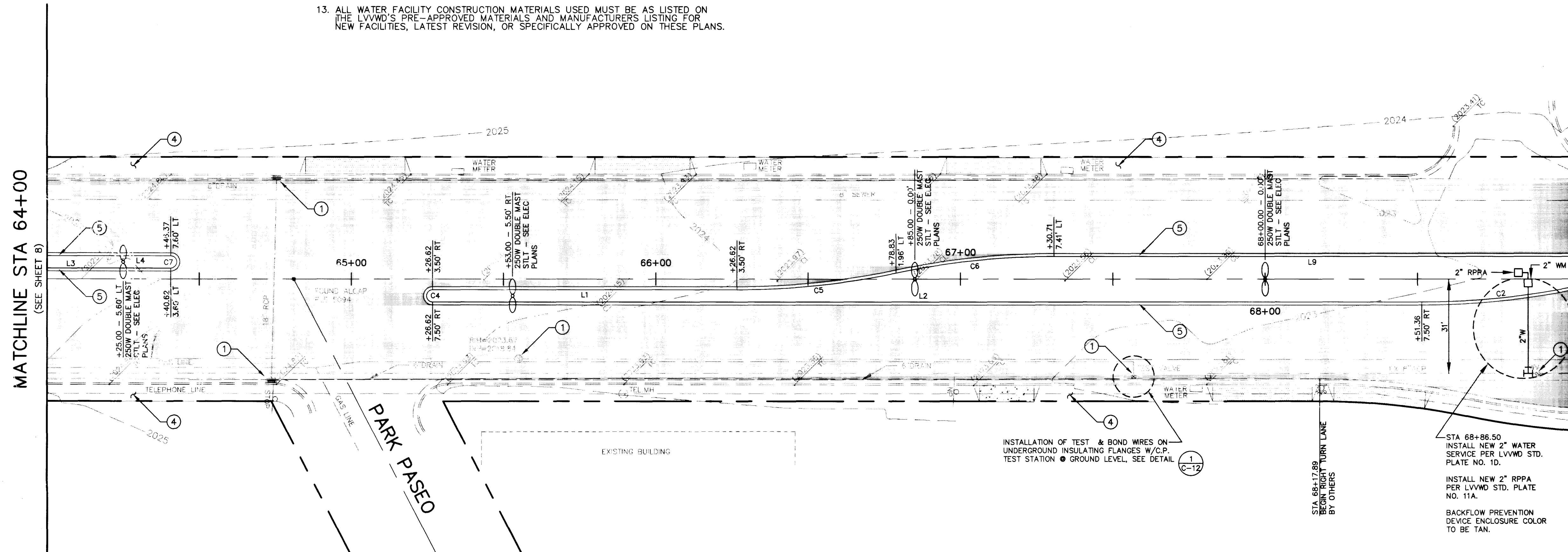
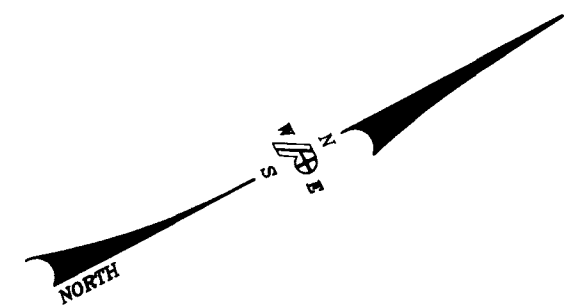
- NO WORK SHALL BEGIN UNTIL THE WATER PLANS HAVE BEEN RELEASED FOR CONSTRUCTION BY THE LVVWD. FOLLOWING WATER PLAN APPROVAL, 48 HOURS NOTICE SHALL BE GIVEN TO THE LVVWD CUSTOMER SERVICE DEPARTMENT (258-7171) PRIOR TO THE START OF CONSTRUCTION. NOTICE MUST BE GIVEN TO 2:00 PM, THE BUSINESS DAY PRIOR TO A LVVWD INSPECTION.
 - ALL WORK SHALL CONFORM TO LVVWD STANDARD PLATES, DRAWINGS, AND SPECIFICATIONS, LATEST EDITION AND THE UNIFORM DESIGN AND CONSTRUCTION STANDARDS FOR WATER DISTRIBUTION SYSTEMS. (UDACS)
 - ALL WORK, EXCEPT AS MODIFIED BY THESE PLANS OR BY NOTE 2, SHALL BE DONE IN ACCORDANCE WITH THE MOST CURRENT DRAFT OR EDITION OF THE UNIFORM STANDARD SPECIFICATIONS FOR PUBLIC WORKS CONSTRUCTION OFFSITE IMPROVEMENT, CLARK COUNTY.
 - A SINGLE PIPE MATERIAL SHALL BE USED THROUGHOUT THE PROJECT UNLESS OTHERWISE APPROVED BY THE LVVWD.
 - ALL SERVICE LATERALS TWO (2) INCHES IN DIAMETER AND SMALLER SHALL BE A COPPER TUBING WITH LVVWD APPROVED SERVICE SADDLES.
 - ALL WATER METER BOXES SHALL BE LOCATED OUTSIDE OF DRIVEWAY AREAS.
 - ALL VALVES SHALL BE LOCATED OUTSIDE OF DRIVEWAYS, VALLEY AND CURB GUTTERS.
- THE FOLLOWING REQUIREMENTS MUST BE MET IN THE EVENT A WATER LINE AND SANITARY OR STORM SEWER LINE CROSS:
 - POTABLE WATER SUPPLY QUALITY MATERIAL.
 - ENCASEMENT WITH FOUR (4) INCH CONCRETE (MINIMUM).
 - SLEEVING WITH POTABLE WATER SUPPLY QUALITY PIPE.
 EACH PROVISION MUST EXTEND ALONG THE SANITARY OR STORM SEWER, ON EITHER SIDE OF THE MAIN, A MINIMUM TEN (10) FOOT DISTANCE PERPENDICULAR TO THE WATER MAIN EXTERIOR.
 - WARNING TAPE SHALL BE REQUIRED OVER ALL MAINS, ALL SIX (6) INCH DIAMETER AND LARGER SERVICE LATERALS, AND ANY SERVICE LATERAL NOT INSTALLED PERPENDICULAR TO THE MAIN IN ACCORDANCE WITH STANDARD PLATE NO. 27.
 - ALL WATER FACILITIES SHALL BE FILLED, DISINFECTED, PRESSURE TESTED, FLUSHED, FILLED AND AN ACCEPTABLE WATER SAMPLE OBTAINED, PRIOR TO CONNECTION TO THE LVVWD'S DISTRIBUTION SYSTEM.
 - THE CONTRACTOR MUST OBTAIN ALL METERS TWO (2) INCHES AND SMALLER FROM LVVWD CENTRAL STORES. TELEPHONE 258-3152 FORTY-EIGHT (48) HOURS PRIOR TO PICK UP.
 - CONSTRUCTION MAY INTERRUPT SERVICE, WITH LVVWD APPROVED AND PROPER NOTIFICATION, BETWEEN THE HOURS OF 10 PM AND 6 AM, SUNDAY THROUGH THURSDAY. CIRCUMSTANCES MAY REQUIRE TEMPORARY SERVICE FEED BE INSTALLED WITHOUT LVVWD REIMBURSEMENT. ANY TEMPORARY SERVICE FEED MUST HAVE PRIOR LVVWD APPROVAL.
 - ALL WATER FACILITY CONSTRUCTION MATERIALS USED MUST BE AS LISTED ON THE LVVWD'S PRE-APPROVED MATERIALS AND MANUFACTURERS LISTING FOR NEW FACILITIES, LATEST REVISION, OR SPECIFICALLY APPROVED ON THESE PLANS.

BACK OF CURB CURVE DATA				
CURVE	RADIUS	LENGTH	TANGENT	DELTA
C2	250.00'	52.44'	26.31'	120°1'03"
C4	2.00'	6.28'	<infinite>	180°00'00"
C5	251.00'	52.59'	26.39'	120°01'19"
C6	250.00'	52.26'	26.23'	115°58'37"
C7	2.00'	6.28'	<infinite>	180°00'00"

BACK OF CURB DATA		
LINE	DIRECTION	DISTANCE
L1	S 27°54'36" W	100.00'
L2	S 27°54'36" W	324.74'
L3	S 27°54'36" W	74.00'
L4	S 27°54'36" W	462.74'
L9	N 27°54'36" E	448.87'

WATER QUANTITIES

- 2" WM (IRR) 1 EA
- 2" RPPA 1 EA



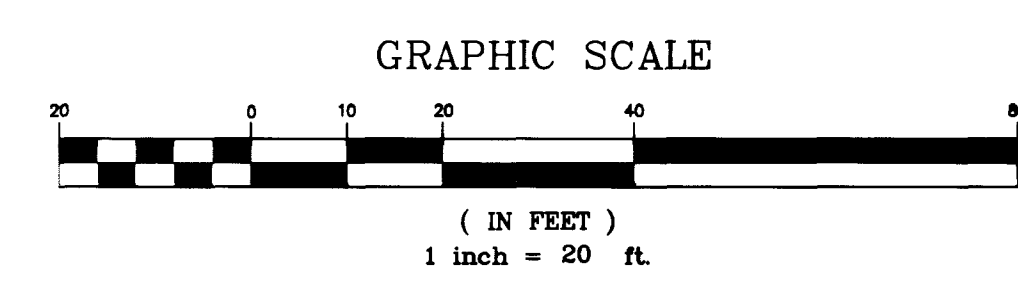
MATCHLINE STA 64+00
(SEE SHEET 8)

MATCHLINE STA 69+00
(SEE SHEET 10)

(NOTE: S CHARLESTON BLVD = STA 72+51.70)

- NOTES:**
- CONTRACTOR SHALL ADJUST ALL MANHOLES, VALVE BOXES, CATCH BASINS AND MISCELLANEOUS FIXTURES WITHIN THE AREA OF THE COLD MILLING AND MEDIAN ISLANDS.
 - ALL LOOP DETECTORS DAMAGED DURING MILLING ARE TO BE REPLACED.
 - EXISTING TRAFFIC SIGNS ATTACHED TO STREET LIGHT POLES SHALL BE REMOUNTED ON NEW SIGN POSTS AFTER EXISTING STREET LIGHT POLES ARE REMOVED.
 - HIGH PRESSURE WASH ALL SIDEWALKS.
 - CONSTRUCT MEDIAN CURB (TYPE 3) PER R-5.1.(613)

LAS VEGAS BOULEVARD



SOUTHWEST GAS COMPANY NOTES: LOWERING
2-TERM TEST STATION OR 5-TERM BOND STATION FOR ROAD IMPROVEMENTS

PROCEDURE: WHEN LOWERING TEST STATIONS OR BOND STATIONS, DO NOT DISCONNECT THE WIRES FROM THE TERMINAL BOARD - THE WIRES ARE TO BE LEFT INTACT. DISCONNECT THE TERMINAL BOARD FROM THE CAST IRON CAP BY REMOVING 2 TO 4 MOUNTING SCREWS. REMOVE TEST STATION OR BOND STATION HOUSING, MAKING SURE THE WIRES ARE NOT DAMAGED IN THE PROCESS. COIL THE WIRES AND TAPE TOGETHER - ALSO, PROTECT THE TERMINALS FROM CONTACT WITH THE SOIL BY WRAPPING OR TAPING THE TERMINAL BOARD. EXCAVATE AND LOWER THE TEST STATION OR BOND STATION 12 INCHES BELOW SUBGRADE TO PROTECT THE WIRES.

IF THE WIRES ARE DAMAGED OR THERE IS A QUESTION ABOUT THE PROCEDURE, CONTACT THE SOUTHWEST GAS CATHODIC PROTECTION DEPARTMENT AT 365-2104 FOR ASSISTANCE.

SOUTHWEST GAS COMPANY NOTES: RAISING

2-TERM TEST STATION OR 5-TERM BOND STATION FOR ROAD IMPROVEMENTS

PROCEDURE: WHEN EXCAVATING TO LOCATE WIRES TO BE RAISED TO GRADE, MAKE SURE THAT THE WIRES ARE NOT DAMAGED DURING THE PROCESS. EXTEND THE WIRES THROUGH THE NEW TEST STATION OR BOND STATION HOUSING. PUT 4 COILS IN THE WIRE RUNNING THROUGH THE HOUSING FOR SLACK. REMOVE THE WIRES FROM THE OLD TERMINAL BOARD AND INSTALL ON THE NEW TERMINAL BOARD IN THE SAME CONFIGURATION. REPLACE THE CAST IRON CAP TO THE HOUSING AND SECURE THE WIRES TO THE BOTTOM OF THE HOUSING WITH ELECTRICAL TAPE TO PREVENT LOSS OF THE 4-COIL SLACK DURING BACKFILL. BACKFILL AROUND THE WIRES WITH SAND TO PREVENT DAMAGE. RAISE THE TEST STATION OR BOND STATION TO GRADE AND INSTALL A 10 INCH OR 12 INCH PIPE COLLAR FILLED WITH CONCRETE, EXTENDING DOWN A MINIMUM OF 12 INCHES TO HELP SECURE THE HOUSING.

IF IT IS NECESSARY TO REPAIR OR EXTEND THE WIRES OR REPAIR THE CONNECTIONS, NOTIFY THE SOUTHWEST GAS CATHODIC PROTECTION DEPARTMENT AT 365-2104.

NOTIFY SOUTHWEST GAS WHEN THE WORK IS COMPLETED TO VERIFY THAT WIRE CONNECTIONS ARE IN ACCORDANCE WITH DEPARTMENT OF TRANSPORTATION REQUIREMENTS.

REDUCED PRESSURE PRINCIPLE ASSEMBLY:

APPROVED REDUCED PRESSURE PRINCIPLE ASSEMBLY(S) SHALL BE INSTALLED PER THE UDACS PLATE NO. 11A. NO WATER SHALL BE TAKEN FROM A SERVICE REQUIRING BACKFLOW PREVENTION UNTIL THE REDUCED PRESSURE PRINCIPLE ASSEMBLY HAS BEEN SUCCESSFULLY TESTED BY THE LVVWD.

ANY BLOCK WALL OR OTHER FENCE MATERIAL SHALL BE DESIGNED AND CONSTRUCTED AROUND THE OUTSIDE OF THE EASEMENT(S) TO ALLOW THE DISTRICT DIRECT ACCESS FROM THE ADJACENT RIGHT-OF-WAY.

UTILITY NOTE:
THE LOCATION OF UNDERGROUND UTILITIES SHOWN HEREON HAS BEEN DETERMINED FROM SURFACE EVIDENCE OF THEIR EXISTENCE OR FROM INFORMATION OBTAINED FROM THE UTILITY COMPANIES. THE ENGINEER ACCEPTS NO LIABILITY FOR THE EXISTENCE OR NON-EXISTENCE OF UTILITY LINES. CONTRACTORS AND OTHERS USING THIS DRAWING MUST CONFIRM THE LOCATION OF UNDERGROUND LINES OR STRUCTURES WITH THE UTILITY COMPANIES PRIOR TO COMMENCING ANY EXCAVATION OR ORDERING OF MATERIALS.
CALL 1-800-227-2600 BEFORE ANY EXCAVATION TAKES PLACE.

- NOTE:**
- ALL DIMENSIONS ARE TO BACK OF CURB UNLESS OTHERWISE NOTED.
 - ADDITIONAL CONDUIT FOR STREET LIGHTS (STLT) AND SIGNAL INTERCONNECT ARE SHOWN ON ELECTRICAL PLANS.

NEVADA DEPARTMENT OF TRANSPORTATION (NDOT) PERMIT REQUIRED
An approved NDOT Occupancy Permit shall be obtained through the District Engineer to any construction within the NDOT right-of-way.

APPROVED FOR CONSTRUCTION
ORIGINALLY SIGNED BY GAJ 2/14/07
Christina... 02/14/07
LAS VEGAS VALLEY WATER DISTRICT DATE 1-800-227-2600

RECORD DRAWING

REVISIONS

NO.	DATE	DESCRIPTION

DESIGNED BY RP/TEP
CHECKED BY TEP
DATE 10-29-96
ENGINEERS SURVEYORS
PLANNERS

JOB No. 1003002
SHEET No. C-9
DRAWN BY DRF
CHECKED BY TEP

POGGEMEYER DESIGN GROUP
2601 NORTH TENAYA WAY LAS VEGAS, NEVADA 89128 (702) 255-8100

PROJECT: DOWNTOWN ENTRY CORRIDOR IMPROVEMENTS
LAS VEGAS BLVD. BRAUIFICATION
4TH STREET TO CHARLESTON BLVD.
PLAN STA 64+00 to 69+00

DEPARTMENT OF PUBLIC WORKS
HORIZONTAL CONTROL
PLAN
STA 64+00 to 69+00

NEVADA DEPARTMENT OF TRANSPORTATION (NDOT) PERMIT REQUIRED
An approved NDOT Occupancy Permit shall be obtained through the District Engineer to any construction within the NDOT right-of-way.

APPROVED FOR CONSTRUCTION
ORIGINALLY SIGNED BY GAJ 2/14/07
Christina... 02/14/07
LAS VEGAS VALLEY WATER DISTRICT DATE 1-800-227-2600

Call before you Dig.
Avoid cutting underground utility lines. It's costly.

DRAWING NO. 9
C-9 28

DWG # 107-V-2288D

WORK STANDARD NOTES

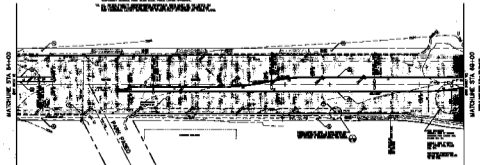
1. ALL WORK SHALL BE DONE IN ACCORDANCE WITH THE STANDARD SPECIFICATIONS FOR PUBLIC WORKS, 1988 EDITION, AS AMENDED.
2. ALL MATERIALS SHALL BE OF THE BEST QUALITY AVAILABLE AND SHALL BE SUBJECT TO INSPECTION AND TESTING BY THE ENGINEER.
3. ALL WORK SHALL BE DONE IN ACCORDANCE WITH THE STANDARD SPECIFICATIONS FOR PUBLIC WORKS, 1988 EDITION, AS AMENDED.
4. ALL WORK SHALL BE DONE IN ACCORDANCE WITH THE STANDARD SPECIFICATIONS FOR PUBLIC WORKS, 1988 EDITION, AS AMENDED.
5. ALL WORK SHALL BE DONE IN ACCORDANCE WITH THE STANDARD SPECIFICATIONS FOR PUBLIC WORKS, 1988 EDITION, AS AMENDED.
6. ALL WORK SHALL BE DONE IN ACCORDANCE WITH THE STANDARD SPECIFICATIONS FOR PUBLIC WORKS, 1988 EDITION, AS AMENDED.

7. ALL WORK SHALL BE DONE IN ACCORDANCE WITH THE STANDARD SPECIFICATIONS FOR PUBLIC WORKS, 1988 EDITION, AS AMENDED.
8. ALL WORK SHALL BE DONE IN ACCORDANCE WITH THE STANDARD SPECIFICATIONS FOR PUBLIC WORKS, 1988 EDITION, AS AMENDED.
9. ALL WORK SHALL BE DONE IN ACCORDANCE WITH THE STANDARD SPECIFICATIONS FOR PUBLIC WORKS, 1988 EDITION, AS AMENDED.
10. ALL WORK SHALL BE DONE IN ACCORDANCE WITH THE STANDARD SPECIFICATIONS FOR PUBLIC WORKS, 1988 EDITION, AS AMENDED.
11. ALL WORK SHALL BE DONE IN ACCORDANCE WITH THE STANDARD SPECIFICATIONS FOR PUBLIC WORKS, 1988 EDITION, AS AMENDED.
12. ALL WORK SHALL BE DONE IN ACCORDANCE WITH THE STANDARD SPECIFICATIONS FOR PUBLIC WORKS, 1988 EDITION, AS AMENDED.

NO.	DESCRIPTION	QUANTITY	UNIT
1
2
3
4
5
6
7
8
9
10
11
12

NO.	DESCRIPTION	QUANTITY	UNIT
1
2
3
4
5
6
7
8
9
10
11
12

SCALE: HORIZONTAL
1" = 40'



LAS VEGAS BOULEVARD

1. ALL WORK SHALL BE DONE IN ACCORDANCE WITH THE STANDARD SPECIFICATIONS FOR PUBLIC WORKS, 1988 EDITION, AS AMENDED.
2. ALL WORK SHALL BE DONE IN ACCORDANCE WITH THE STANDARD SPECIFICATIONS FOR PUBLIC WORKS, 1988 EDITION, AS AMENDED.
3. ALL WORK SHALL BE DONE IN ACCORDANCE WITH THE STANDARD SPECIFICATIONS FOR PUBLIC WORKS, 1988 EDITION, AS AMENDED.
4. ALL WORK SHALL BE DONE IN ACCORDANCE WITH THE STANDARD SPECIFICATIONS FOR PUBLIC WORKS, 1988 EDITION, AS AMENDED.
5. ALL WORK SHALL BE DONE IN ACCORDANCE WITH THE STANDARD SPECIFICATIONS FOR PUBLIC WORKS, 1988 EDITION, AS AMENDED.
6. ALL WORK SHALL BE DONE IN ACCORDANCE WITH THE STANDARD SPECIFICATIONS FOR PUBLIC WORKS, 1988 EDITION, AS AMENDED.



REVISIONS AND COMMENTS

1. ALL WORK SHALL BE DONE IN ACCORDANCE WITH THE STANDARD SPECIFICATIONS FOR PUBLIC WORKS, 1988 EDITION, AS AMENDED.
2. ALL WORK SHALL BE DONE IN ACCORDANCE WITH THE STANDARD SPECIFICATIONS FOR PUBLIC WORKS, 1988 EDITION, AS AMENDED.
3. ALL WORK SHALL BE DONE IN ACCORDANCE WITH THE STANDARD SPECIFICATIONS FOR PUBLIC WORKS, 1988 EDITION, AS AMENDED.
4. ALL WORK SHALL BE DONE IN ACCORDANCE WITH THE STANDARD SPECIFICATIONS FOR PUBLIC WORKS, 1988 EDITION, AS AMENDED.
5. ALL WORK SHALL BE DONE IN ACCORDANCE WITH THE STANDARD SPECIFICATIONS FOR PUBLIC WORKS, 1988 EDITION, AS AMENDED.
6. ALL WORK SHALL BE DONE IN ACCORDANCE WITH THE STANDARD SPECIFICATIONS FOR PUBLIC WORKS, 1988 EDITION, AS AMENDED.

REVISIONS AND COMMENTS

NO. 1. ALL WORK SHALL BE DONE IN ACCORDANCE WITH THE STANDARD SPECIFICATIONS FOR PUBLIC WORKS, 1988 EDITION, AS AMENDED.

NO. 2. ALL WORK SHALL BE DONE IN ACCORDANCE WITH THE STANDARD SPECIFICATIONS FOR PUBLIC WORKS, 1988 EDITION, AS AMENDED.

NO. 3. ALL WORK SHALL BE DONE IN ACCORDANCE WITH THE STANDARD SPECIFICATIONS FOR PUBLIC WORKS, 1988 EDITION, AS AMENDED.

NO. 4. ALL WORK SHALL BE DONE IN ACCORDANCE WITH THE STANDARD SPECIFICATIONS FOR PUBLIC WORKS, 1988 EDITION, AS AMENDED.

NO. 5. ALL WORK SHALL BE DONE IN ACCORDANCE WITH THE STANDARD SPECIFICATIONS FOR PUBLIC WORKS, 1988 EDITION, AS AMENDED.

NO. 6. ALL WORK SHALL BE DONE IN ACCORDANCE WITH THE STANDARD SPECIFICATIONS FOR PUBLIC WORKS, 1988 EDITION, AS AMENDED.

REVISIONS AND COMMENTS

NO. 1. ALL WORK SHALL BE DONE IN ACCORDANCE WITH THE STANDARD SPECIFICATIONS FOR PUBLIC WORKS, 1988 EDITION, AS AMENDED.

NO. 2. ALL WORK SHALL BE DONE IN ACCORDANCE WITH THE STANDARD SPECIFICATIONS FOR PUBLIC WORKS, 1988 EDITION, AS AMENDED.

NO. 3. ALL WORK SHALL BE DONE IN ACCORDANCE WITH THE STANDARD SPECIFICATIONS FOR PUBLIC WORKS, 1988 EDITION, AS AMENDED.

NO. 4. ALL WORK SHALL BE DONE IN ACCORDANCE WITH THE STANDARD SPECIFICATIONS FOR PUBLIC WORKS, 1988 EDITION, AS AMENDED.

NO. 5. ALL WORK SHALL BE DONE IN ACCORDANCE WITH THE STANDARD SPECIFICATIONS FOR PUBLIC WORKS, 1988 EDITION, AS AMENDED.

NO. 6. ALL WORK SHALL BE DONE IN ACCORDANCE WITH THE STANDARD SPECIFICATIONS FOR PUBLIC WORKS, 1988 EDITION, AS AMENDED.

UTILITY NOTES

ALL UTILITIES SHOWN ARE BASED ON RECORD DRAWINGS AND FIELD SURVEY. THE CONTRACTOR SHALL VERIFY THE LOCATION AND DEPTH OF ALL UTILITIES PRIOR TO CONSTRUCTION. ANY CHANGES TO THE UTILITIES SHOWN SHALL BE NOTED ON THE CONSTRUCTION DRAWINGS.

1. ALL WORK SHALL BE DONE IN ACCORDANCE WITH THE STANDARD SPECIFICATIONS FOR PUBLIC WORKS, 1988 EDITION, AS AMENDED.
2. ALL WORK SHALL BE DONE IN ACCORDANCE WITH THE STANDARD SPECIFICATIONS FOR PUBLIC WORKS, 1988 EDITION, AS AMENDED.
3. ALL WORK SHALL BE DONE IN ACCORDANCE WITH THE STANDARD SPECIFICATIONS FOR PUBLIC WORKS, 1988 EDITION, AS AMENDED.
4. ALL WORK SHALL BE DONE IN ACCORDANCE WITH THE STANDARD SPECIFICATIONS FOR PUBLIC WORKS, 1988 EDITION, AS AMENDED.
5. ALL WORK SHALL BE DONE IN ACCORDANCE WITH THE STANDARD SPECIFICATIONS FOR PUBLIC WORKS, 1988 EDITION, AS AMENDED.
6. ALL WORK SHALL BE DONE IN ACCORDANCE WITH THE STANDARD SPECIFICATIONS FOR PUBLIC WORKS, 1988 EDITION, AS AMENDED.

DEPARTMENT OF PUBLIC WORKS
 1000 WEST WASHINGTON AVENUE
 LAS VEGAS, NEVADA 89102
 PHONE: (702) 725-1000
 FAX: (702) 725-1001
 WWW: WWW.CITYOFVegas.NV.GOV

PROJECT: LAS VEGAS BOULEVARD
 DRAWING NO.: 100-100-100-100
 SHEET NO.: 100-100-100-100

DATE: 10/10/2000
 DRAWN BY: [Signature]
 CHECKED BY: [Signature]
 APPROVED BY: [Signature]

100-100-100-100



100-100-100-100