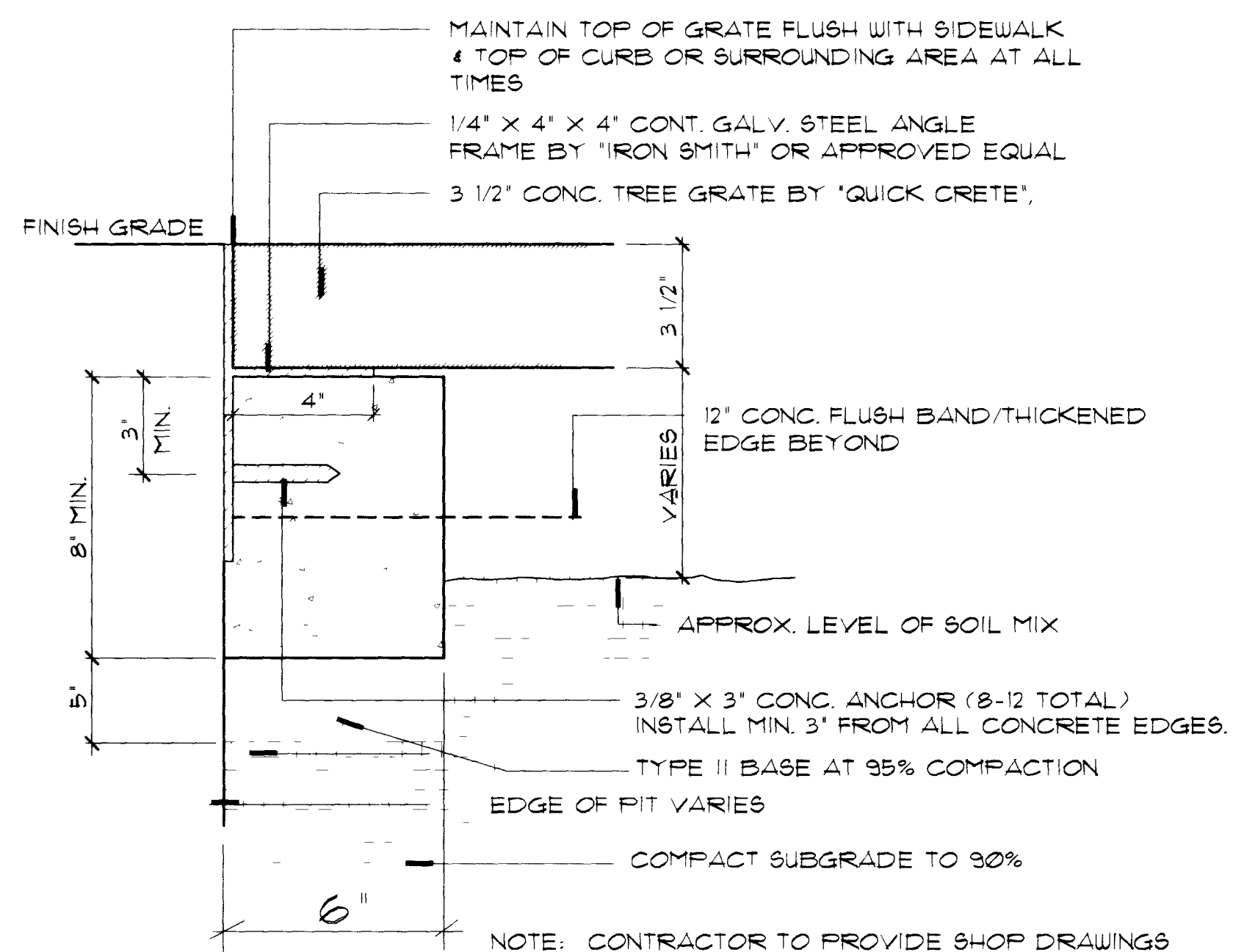


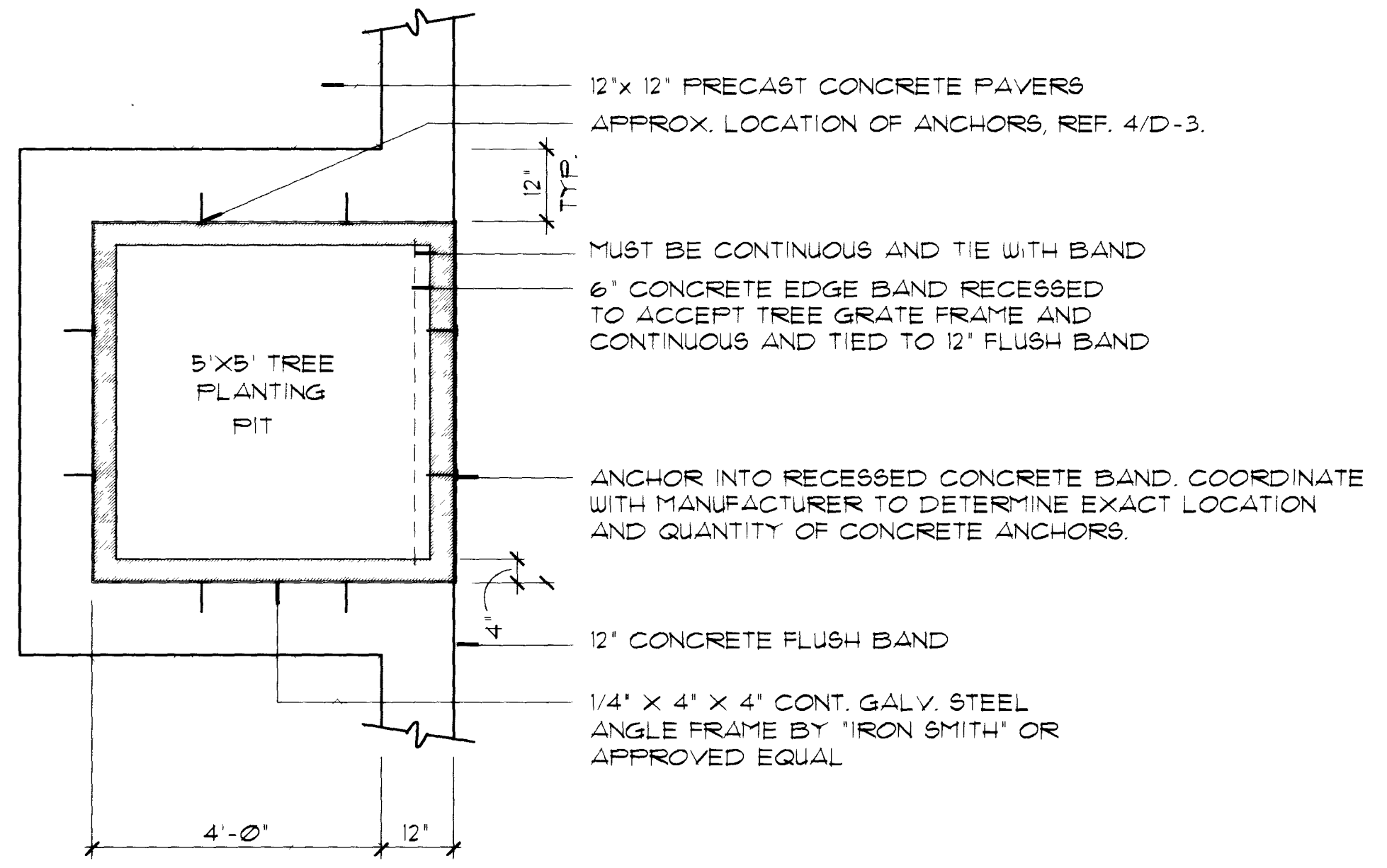
1 CORNER TREATMENT/RAMP ENLARGEMENT

PLAN VIEW

N.T.S.



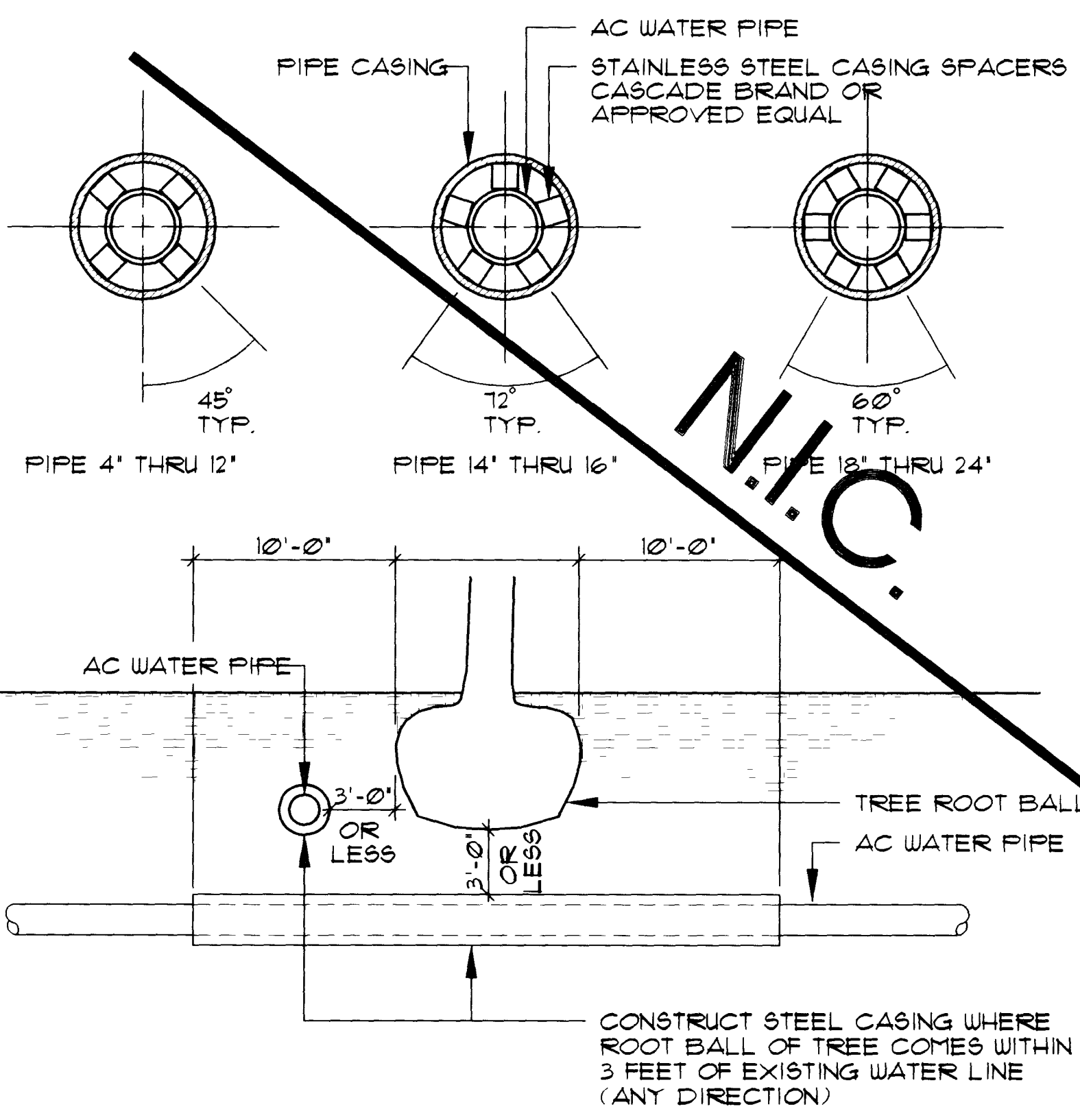
SECTION



3 TREE GRATE AT LANDSCAPE EDGE DETAIL

PLAN VIEW

N.T.S.



- NOTES:
- CASINGS ARE TO BE SYMMETRICAL ABOUT THE CENTER LINE OF PIPE.
 - REFER TO CONTRACT ONE DRAWINGS FOR LOCATIONS OF EXISTING WATER LINES AND POTENTIAL CONFLICTS.
 - THIS DETAIL APPLIES TO BOTH CANOPY AND PALM TREES.
 - PIPE CASING SHALL BE LAID TRUE TO LINE AND GRADE WITH NO BENDS OR CHANGES IN GRADE FOR THE FULL LENGTH OF THE CASING.
 - THE PIPE SHALL BE SUPPORTED AT EACH END OF EACH JOINT WITH SPACERS. AFTER INSTALLATION OF THE PIPE, THE CASING SHALL BE SEALED AT BOTH ENDS WITH CASING END SEALS.

NOTE: THE ENGINEER ESTIMATES THAT APPROX. NO WATERLINE/TREE CONFLICTS WILL OCCUR UNDER THIS CONTRACT. THESE WILL BE HANDLED ON A PER CONFLICT BASIS AS AN ADDITIVE BID ITEM AND ONLY WHEN DIRECTED BY THE ENGINEER.

2 WATER LINE ENCASEMENT DETAIL (FOR AC PIPE/WATERLINE CONFLICTS ONLY)

PLAN VIEW

N.T.S.

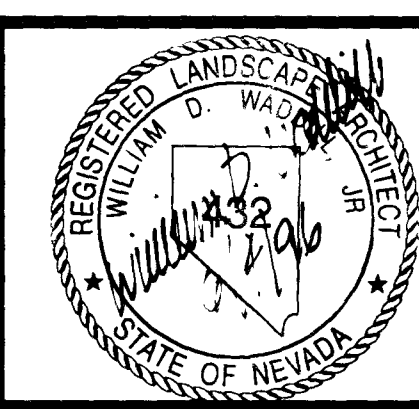
Avoid cutting underground utility lines. It's costly.

Call before you Dig.

1-800-227-2600

UNDERGROUND UTILITY ALERT (USA)

NO.	REVISIONS	DATE	BY



Las Vegas, Nevada © 1996

DESIGNED BY URG
DRAWN BY BM/WSW
CHECKED BY BW
NOTE BOOK NO.



DOWNTOWN CORRIDOR IMPROVEMENTS
CITY OF LAS VEGAS DEPT. OF PUBLIC WORKS
LAS VEGAS, NEVADA
CONTRACT 4 - 4TH STREET
CHARLESTON BLVD. TO COLORADO AVE.

DATE: 6/96
SCALE: 1"=20'

HARDSCAPE DETAILS

DWG. NO. 107-V-2288C
FILE NO. 9903.02
D-5
SHEET 17 OF 22

