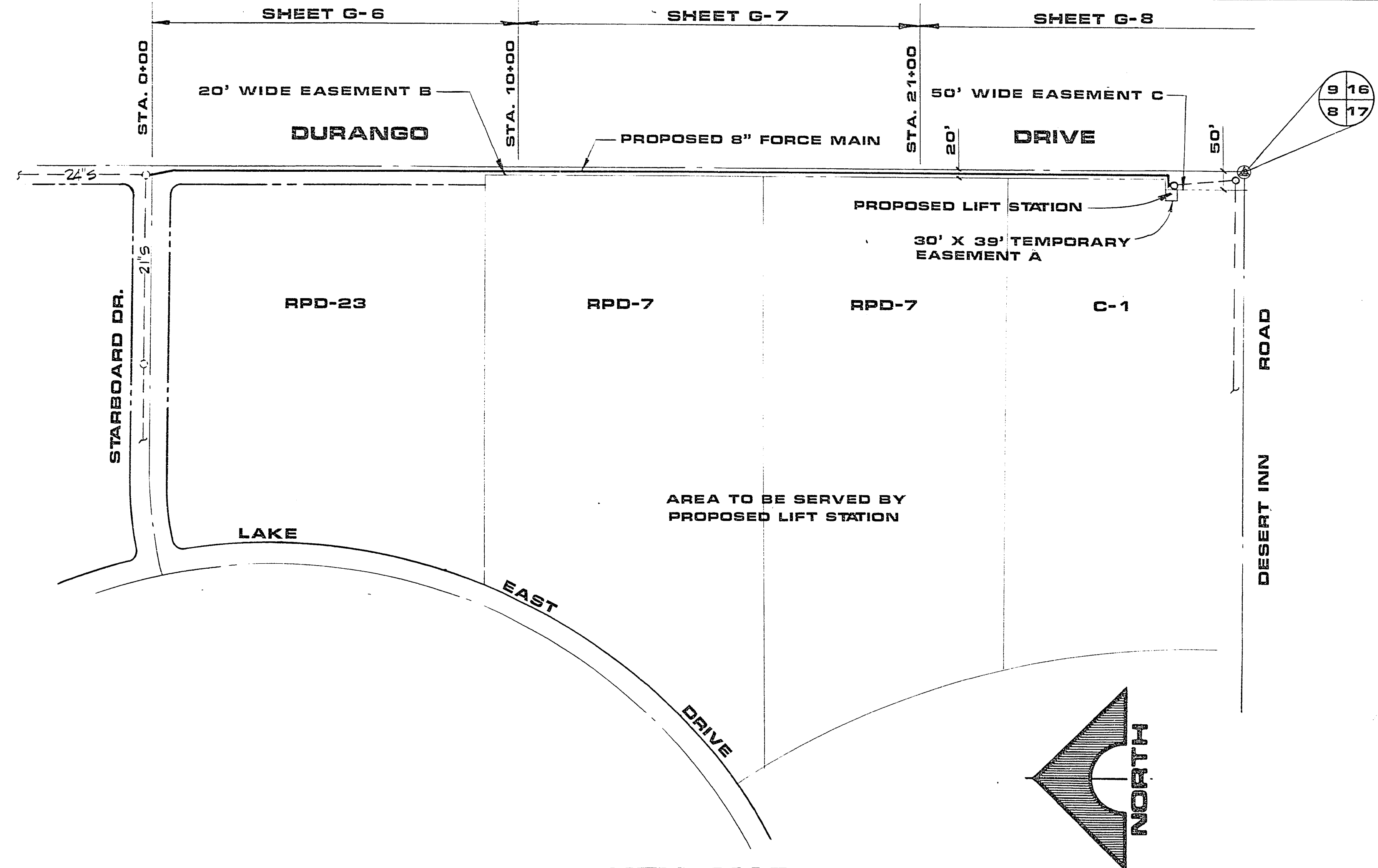


GENERAL NOTES:

1. ALL CONSTRUCTION AND MATERIAL FOR THIS PROJECT SHALL BE IN ACCORDANCE WITH THE MOST RECENT EDITION OF "THE UNIFORM STANDARD SPECIFICATIONS FOR PUBLIC WORKS CONSTRUCTION, OFFSITE IMPROVEMENTS, CLARK COUNTY AREA, NEVADA," EXCEPT AS MODIFIED BY THE CONTRACT DRAWINGS AND SPECIFICATIONS.
2. CONSTRUCTION SURVEY:
GRADES ARE GIVEN FROM TOP STAKES OR NAILS. THE CONTRACTOR IS CAUTIONED TO OBSERVE THE FOLLOWING RULE IN USING THE GRADE STAKES: THREE CONSECUTIVE POINTS THAT ARE SHOWN TO BE THE SAME RATE OF SLOPE MUST BE USED IN COMMON. IN ORDER THAT ANY VARIATION OUT OF A PERFECT STRAIGHT GRADE MAY BE DETECTED, AND IN CASE ANY SUCH DISCREPANCY IS FOUND, THE SAME MUST BE REPORTED TO THE ENGINEER.
3. THE CONTRACTOR SHALL, AT HIS OWN EXPENSE, LOCATE ALL OVERHEAD INTERFERENCES WHICH MAY AFFECT HIS OPERATION DURING CONSTRUCTION AND SHALL TAKE ALL NECESSARY PRECAUTIONS TO AVOID DAMAGE TO SAME. THE CONTRACTOR SHALL USE EXTREME CAUTION WHEN WORKING NEAR OVERHEAD OR UNDERGROUND POWER AND/OR TELEPHONE FACILITIES SO AS TO SAFELY PROTECT ALL PERSONNEL AND EQUIPMENT, AND SHALL BE RESPONSIBLE FOR ALL COSTS AND LIABILITY IN CONNECTION THEREWITH.
4. LOCATION OF UNDERGROUND UTILITIES SHOWN ON THE DRAWINGS WERE OBTAINED FROM INFORMATION RECEIVED FROM THE APPLICABLE UTILITY COMPANIES. NEITHER THE OWNER NOR THE ENGINEER ASSUMES ANY RESPONSIBILITY FOR UTILITIES OR STRUCTURES NOT SHOWN, OR NOT IN THE LOCATION SHOWN ON THE DRAWINGS. CONTRACTOR TO VERIFY THE EXACT LOCATION OF UTILITIES PRIOR TO START OF CONSTRUCTION. THE CONTRACTOR'S RESPONSIBILITY REGARDING UTILITIES SHALL BE AS REQUIRED UNDER SECTION 107.17 OF "THE UNIFORM STANDARD SPECIFICATIONS FOR CLARK COUNTY AREA, NEVADA."
5. ALL BARRICADING AND TEMPORARY TRAFFIC CONTROL DEVICES OR METHODS USED DURING CONSTRUCTION SHALL BE IN ACCORDANCE WITH THE LATEST EDITION OF "NEVADA TRAFFIC CONTROL MANUAL," PUBLISHED BY THE STATE OF NEVADA, DEPARTMENT OF HIGHWAYS, EXCEPT AS OTHERWISE PROVIDED IN THE CONTRACT SPECIFICATIONS OR REQUIRED BY THE ENGINEER.
6. FORCE MAIN STATIONING IS ALONG CENTERLINE OF PIPE. THE ACTUAL HORIZONTAL LENGTH OF PIPE MAY VARY BASED ON THE PRE-MANUFACTURED PUMPING EQUIPMENT SUPPLIED.



LEGEND

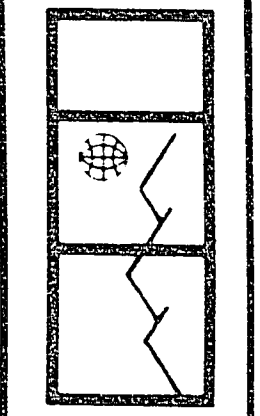
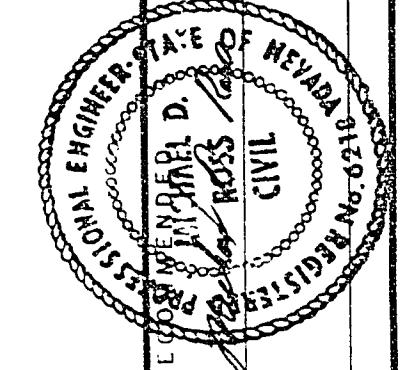
NTS	NOT TO SCALE	ESI	ENGINEERS & SURVEYORS INC.	
INV.	INVERT	PVCP.	POLYVINYL CHLORIDE PIPE	
VCP.	VITRIFIED CLAY PIPE	SHT.	SHEET	
U.G. TELE.	UNDERGROUND TELEPHONE	SQ.	SQUARE	
GRD.	GRADE	CMP.	CORRUGATED METAL PIPE	
TC.	TOP OF CURB	TMH.	TOP OF MANHOLE	
L.F.	LINEAL FEET	SCH.	SCHEDULE	
STD.	STANDARD	TYP.	TYPICAL	
MAX.	MAXIMUM	E	CENTERLINE	
MIN.	MINIMUM	PAVE.	PAVEMENT	
EL.	ELBOW	A.C.	ASPHALTIC CONCRETE	
PVC.	POLYVINYL CHLORIDE	STA.	STATION	
EA.	EACH	M.H.	MANHOLE	
CHU.	CONCRETE MASONRY UNIT	---	CENTERLINE	
CTR.	CENTER	---	RIGHT OF WAY	
O.D.	OUTSIDE DIAMETER	---	EDGE OF PAVEMENT	
NOM.	NOMINAL	---	EXIST WATER LINE	
DIAM.	DIAMETER	---	EXIST SEWER LINE	
E.W.	EACH WAY	---	EXISTING MANHOLE	
M.J.	MECHANICAL JOINT	---	NEW SEWER MANHOLE	
PLYWD.	PLYWOOD	---	BENCH MARKS	
HDR.	HEADER	---	EASEMENT LINE	
D.I.P.	DUCTILE IRON PIPE	---	HPA.	HIGH PRESSURE AIR
C.I.P.	CAST IRON PIPE	---	PG.	PROPANE GAS
FLG.	FLANGE	---	LPA.	LOW PRESSURE AIR
---	POWER POLE	---	---	PRESSURE REDUCING VALVE
P.E.	PLAIN END	---	---	BALL VALVE
CPLG.	COUPLING	---	---	CHECK VALVE
EX. OR EXIST	EXISTING	---	---	GAUGE
STL.	STEEL			

KEY MAP

SCALE: 1" = 200'

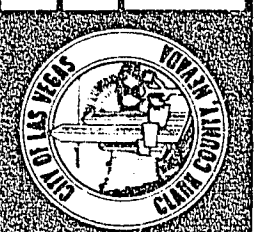
BASIS OF BEARING
 N00°14'36" W, BEING THE BEARING OF THE EAST LINE OF THE SOUTHEAST QUARTER (SE¼) OF SECTION 8, T 21 S, R 60 E, M.D.M., LAS VEGAS, CLARK COUNTY, NEVADA, AS SHOWN BY A RECORD OF SURVEY ON FILE IN THE CLARK COUNTY, NEVADA, RECORDER'S OFFICE AS PAGE 48 OF FILE 41 OF SURVEYS.

BENCH MARK
 BLM BRASS CAP AT INTERSECTION OF DESERT INN ROAD AND DURANGO DRIVE, SECTION CORNER.
 ELEV. 2617.51



G.C. WALLACE
 Consulting Engineers, Inc.
 1555 South Rainbow Blvd. • Las Vegas, Nevada 89102 • 363-1200

CITY OF LAS VEGAS
 DURANGO DRIVE LIFT STATION
 KEY MAP & GENERAL NOTES



SHEET
G-2
 OF 15 SHEETS

AS BUILT DRAWING

20-1-4 307-V 578

JOB NO. 412.150

884 DIETRICH-POST 6532B