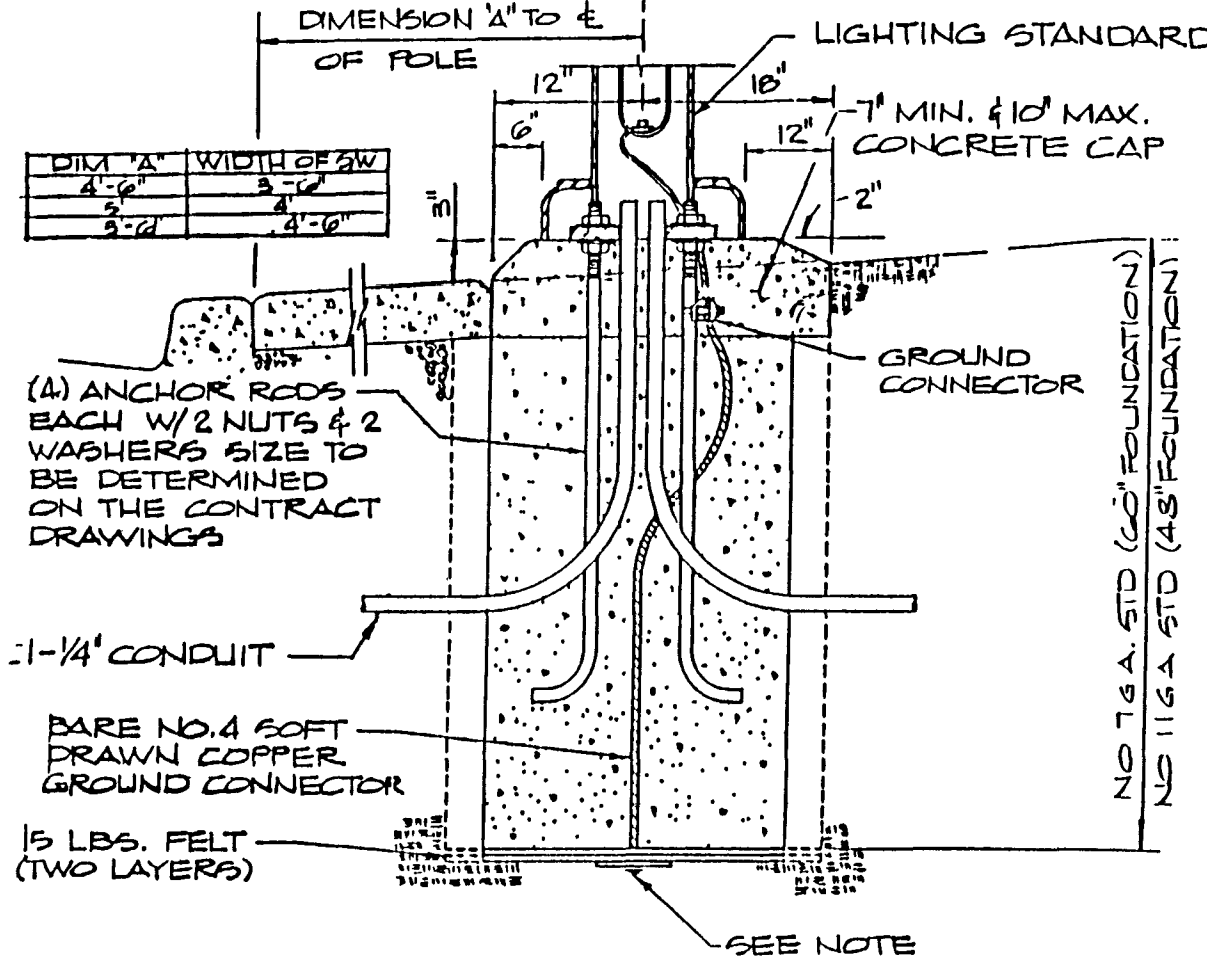
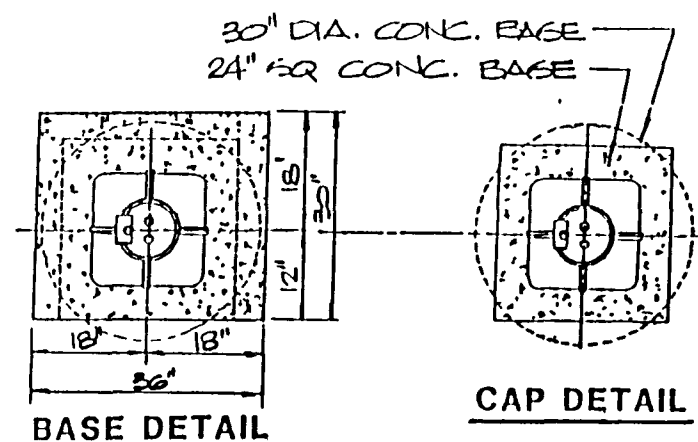
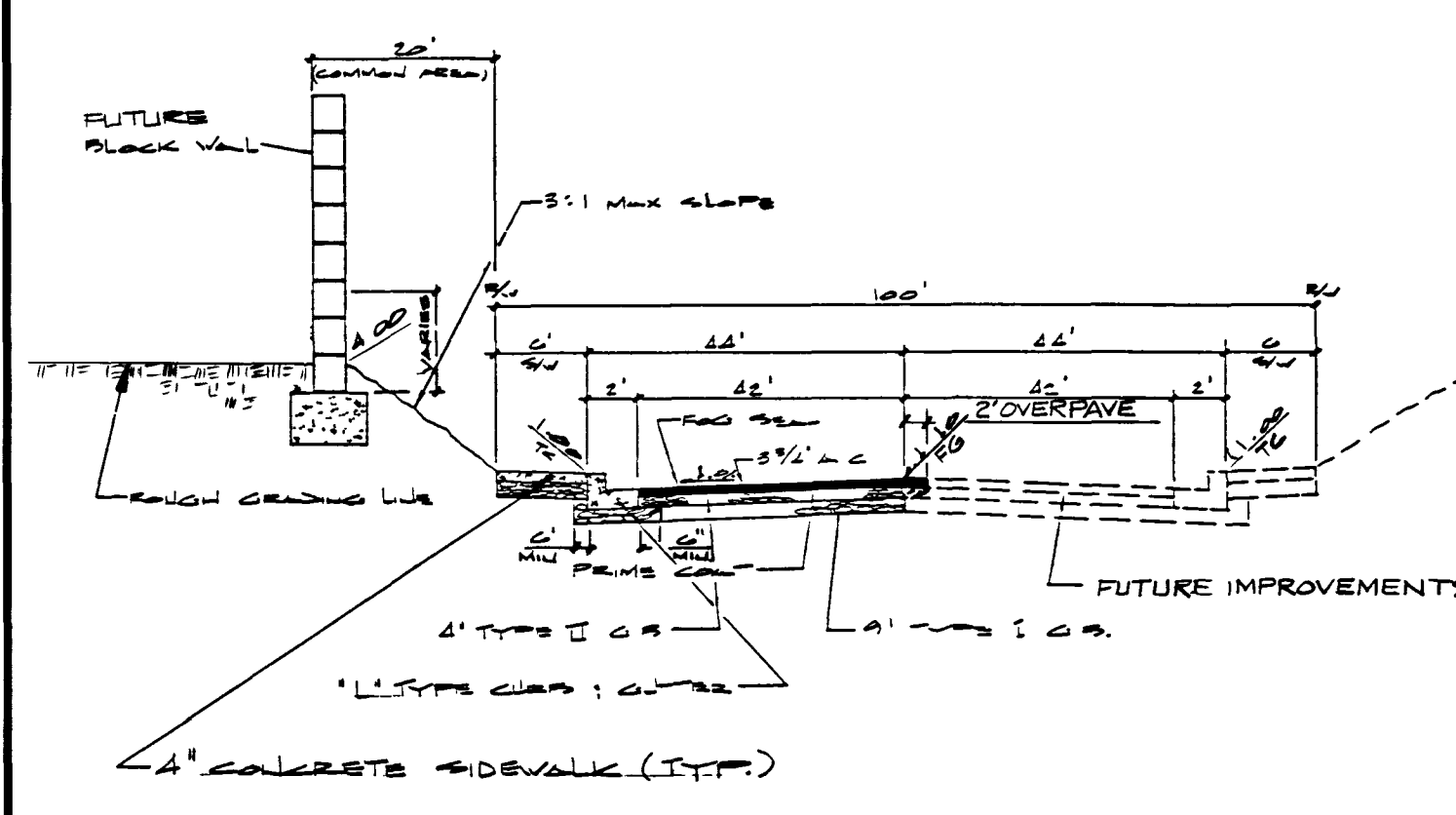


NOTE:
 1. MADE ELECTRODE SHALL BE IN ACCORDANCE WITH ARTICLE 250-83 OF THE NATIONAL ELECTRICAL CODE
 2. TOP OF SLOPE IS DOWN AND AWAY FROM THE STANDARD FOR DRAINAGE



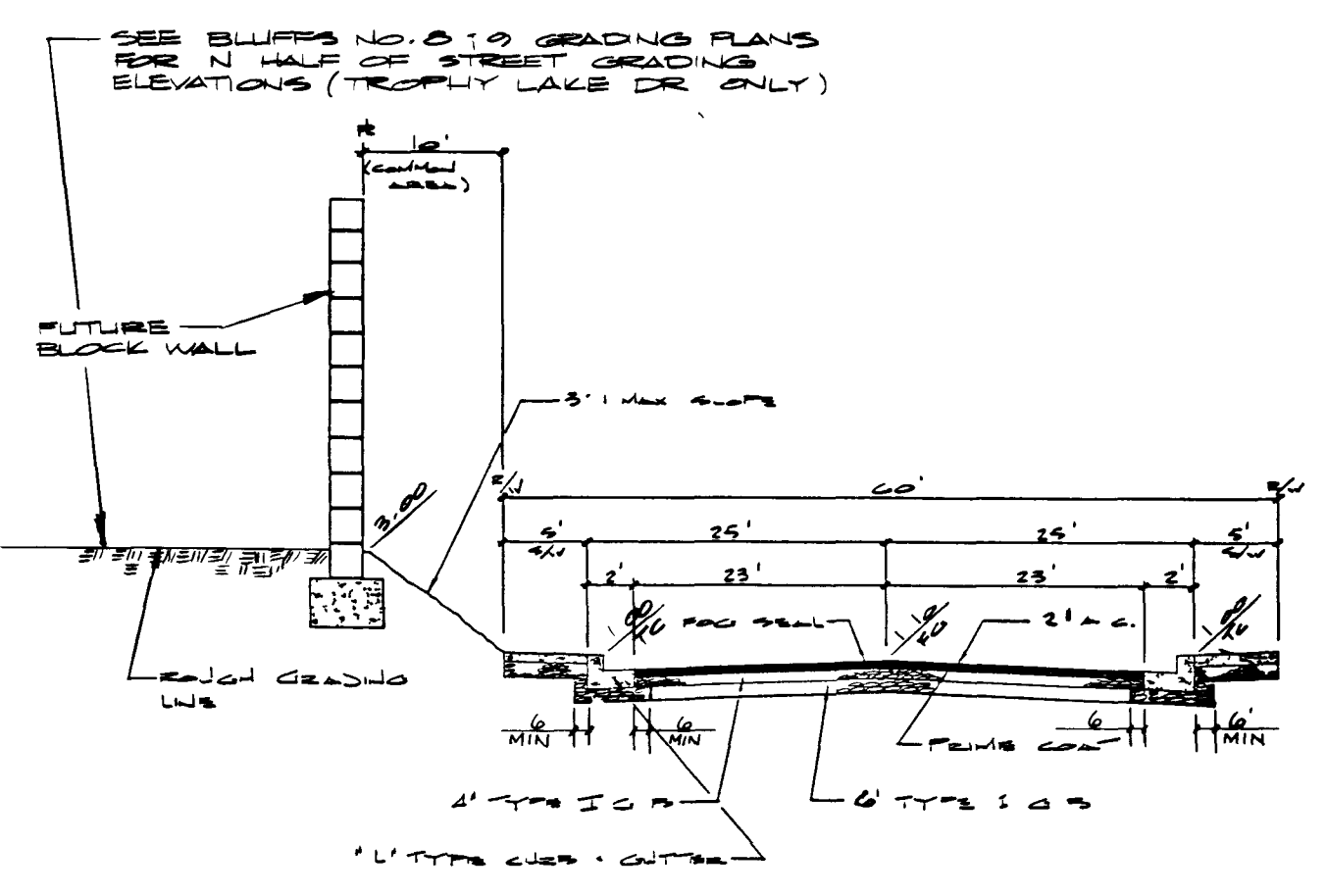
TYPICAL STREET LIGHT DETAIL



1. APPROVAL FOR USE OF NATIVE MATERIAL TO BE PROCESSED IN ACCORDANCE WITH CLV "STATEMENT OF POLICY FOR USE OF NATIVE MATERIAL IN LIEU OF IMPORTED TYPE I BASE FOR DEDICATED CITY STREETS" DATED JULY 25, 1984
2. 6" MINIMUM TYPE I OR TYPE II GRAVEL BASE UNDER CURB AND GUTTER

TYPICAL 100' HALF STREET SECTION

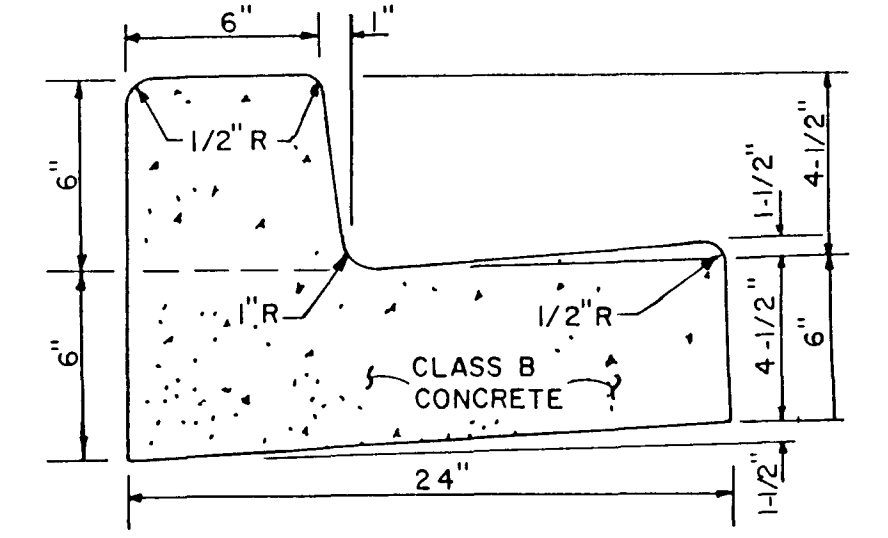
DESERT INN ROAD - LOOKING EAST
 FROM GRAND CANYON DR. TO FORT APACHE RD.



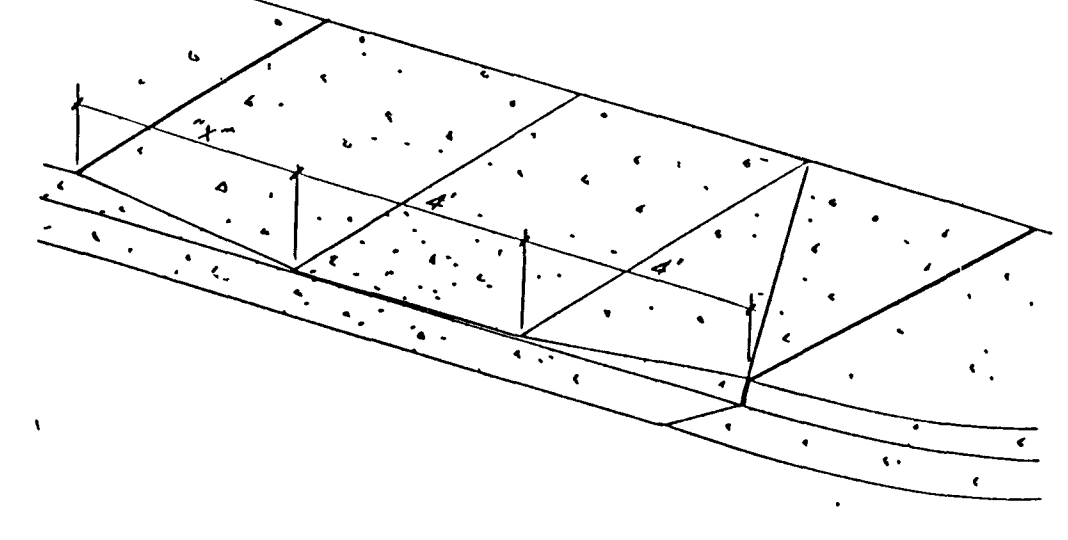
1. APPROVAL FOR USE OF NATIVE MATERIAL TO BE PROCESSED IN ACCORDANCE WITH CLV "STATEMENT OF POLICY FOR USE OF NATIVE MATERIAL IN LIEU OF IMPORTED TYPE I BASE FOR DEDICATED CITY STREETS" DATED JULY 25, 1984
2. 6" MINIMUM TYPE I OR TYPE II GRAVEL BASE UNDER CURB AND GUTTER

TYPICAL 60' STREET SECTION

PRIZE LAKE DRIVE & TROPHY LAKE DRIVE
 AND LOOP ROADS

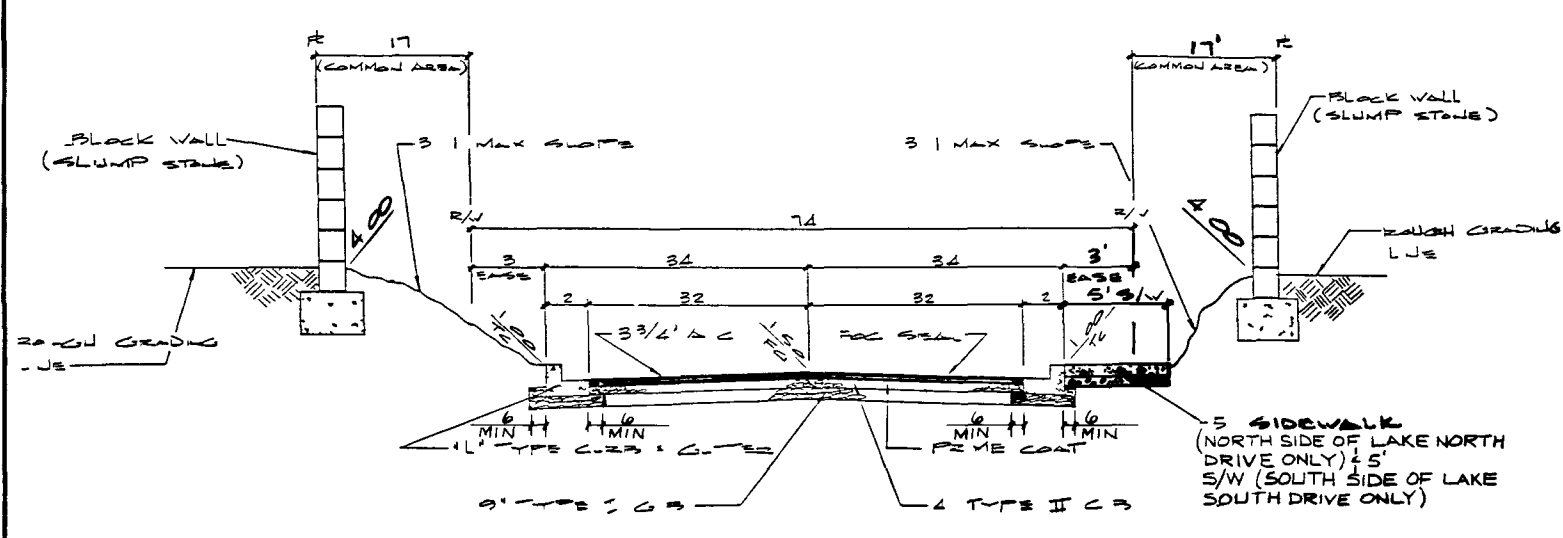


"L" TYPE CURB & GUTTER DETAIL



SLOPE	"X"
1/4" TO 1/2"	4
1/2" TO 3/4"	5
3/4" TO 1"	6
1" TO 1 1/4"	8
1 1/4" TO 1 1/2"	10

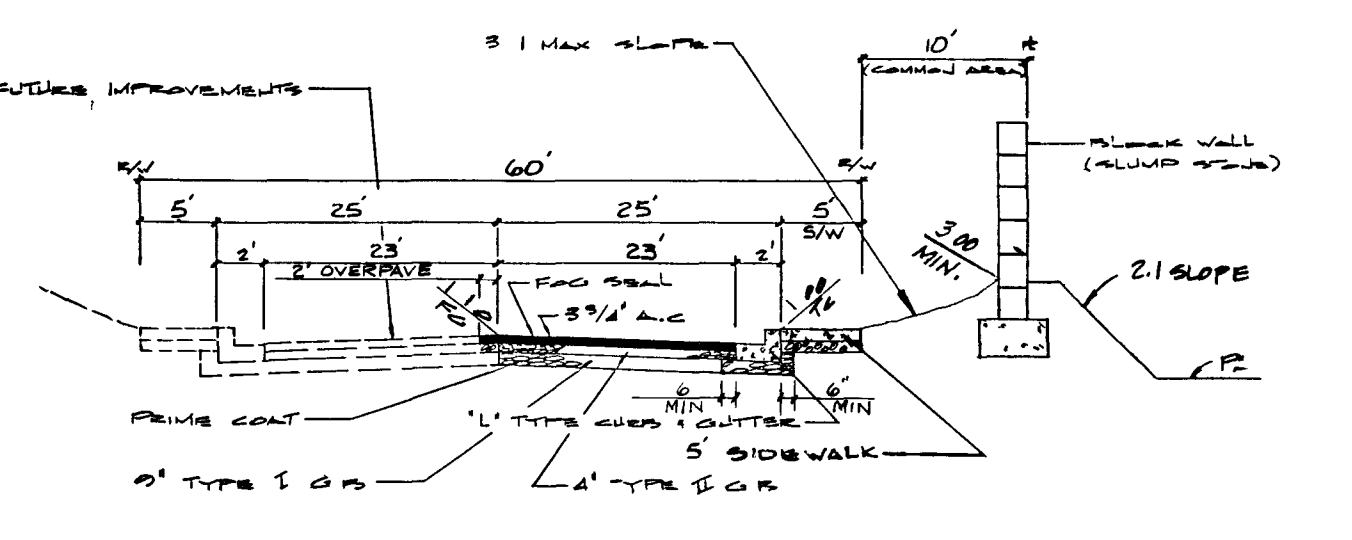
TYPICAL WHEELCHAIR RAMP SLOPE DETAIL



1. APPROVAL FOR USE OF NATIVE MATERIAL TO BE PROCESSED IN ACCORDANCE WITH CLV "STATEMENT OF POLICY FOR USE OF NATIVE MATERIAL IN LIEU OF IMPORTED TYPE I BASE FOR DEDICATED CITY STREETS" DATED JULY 25, 1984
2. 6" MINIMUM TYPE I OR TYPE II GRAVEL BASE UNDER CURB AND GUTTER

TYPICAL 74' STREET SECTION

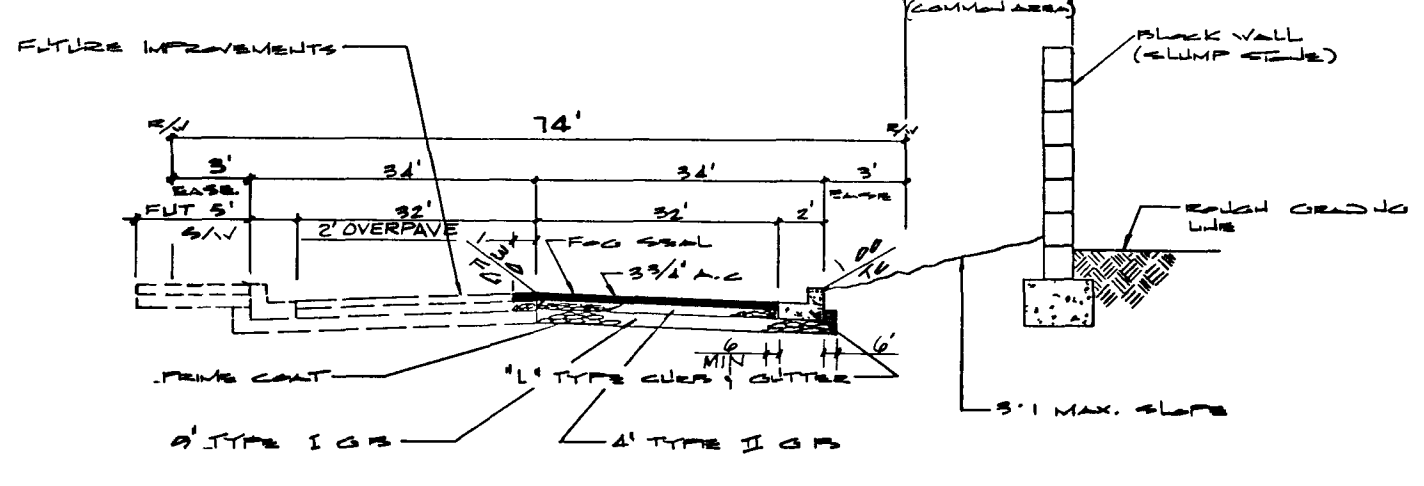
LAKE NORTH DRIVE & LAKE SOUTH DRIVE



TYPICAL 60' HALF STREET SECTION

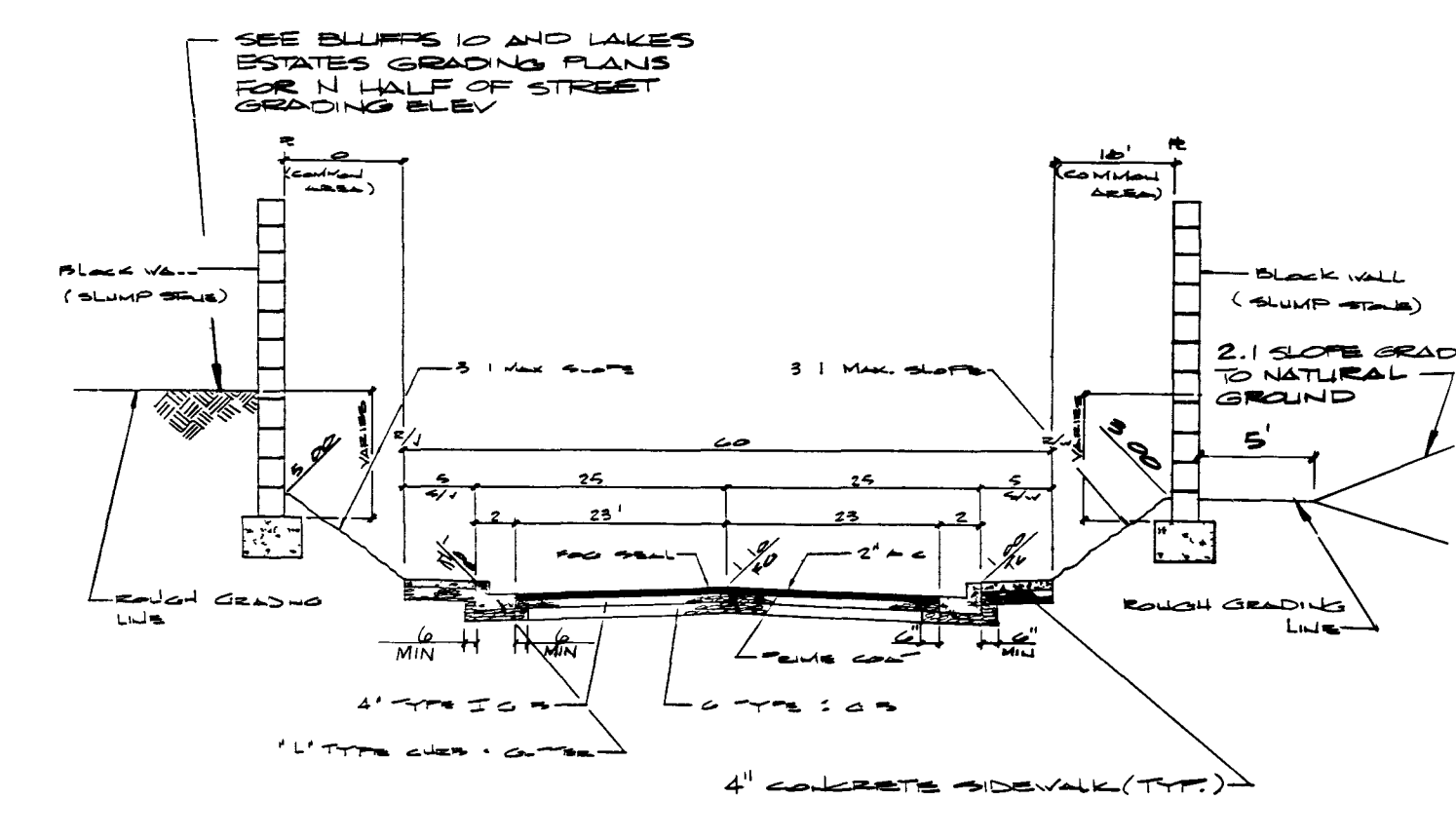
GRAND CANYON DRIVE
 (FROM LAKE NORTH DRIVE TO LAKE SOUTH DRIVE)
 LOOKING NORTH

1. APPROVAL FOR USE OF NATIVE MATERIAL TO BE PROCESSED IN ACCORDANCE WITH CLV "STATEMENT OF POLICY FOR USE OF NATIVE MATERIAL IN LIEU OF IMPORTED TYPE I BASE FOR DEDICATED CITY STREETS" DATED JULY 25, 1984
2. 6" MINIMUM TYPE I OR TYPE II GRAVEL BASE UNDER CURB AND GUTTER



TYPICAL 74' HALF STREET SECTION

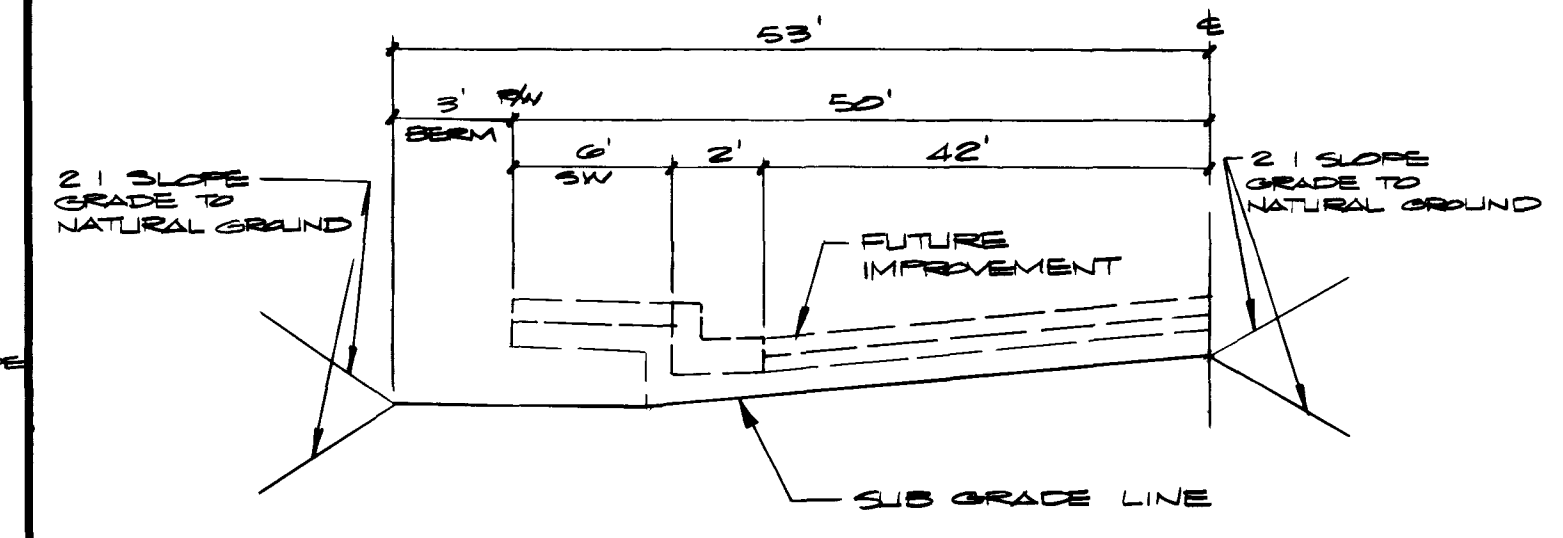
GRAND CANYON DRIVE - LOOKING NORTH
 (FROM SAHARA AVE. TO LAKE NORTH DRIVE) &
 (FROM LAKE SOUTH DRIVE TO DESERT INN ROAD)



1. APPROVAL FOR USE OF NATIVE MATERIAL TO BE PROCESSED IN ACCORDANCE WITH CLV "STATEMENT OF POLICY FOR USE OF NATIVE MATERIAL IN LIEU OF IMPORTED TYPE I BASE FOR DEDICATED CITY STREETS" DATED JULY 25, 1984
2. 6" MINIMUM TYPE I OR TYPE II GRAVEL BASE UNDER CURB AND GUTTER

TYPICAL 60' STREET SECTION

MARINER COVE DRIVE
 LOOKING EAST



GRADING DETAIL
 DESERT INN RD. - LOOKING EAST
 (FROM FORT APACHE RD. TO CRYSTAL WATER WAY)

see sheet 1
 CLV CHIEF LAND DEVELOPMENT DATE

REVISION	BY	DATE
1	TS	4/24/87
2	TS	12-7-87

ES/ENGINEERS & SURVEYORS INC.
 1010 N. DATE AVENUE, SUITE 101, TULSA, OKLAHOMA 74104
 SUBMITTED BY
 Paul E. Johnson
 4/24/87

DETAIL SHEET

PROJECT
E.I./2, SEC. 7 THE LAKES AT WEST SAHARA
 PHASE 2

WONO 5018
 BY TS
 DATE 4-87
 SCALE NONE

SHEET
2
 OF 22 SHEETS

