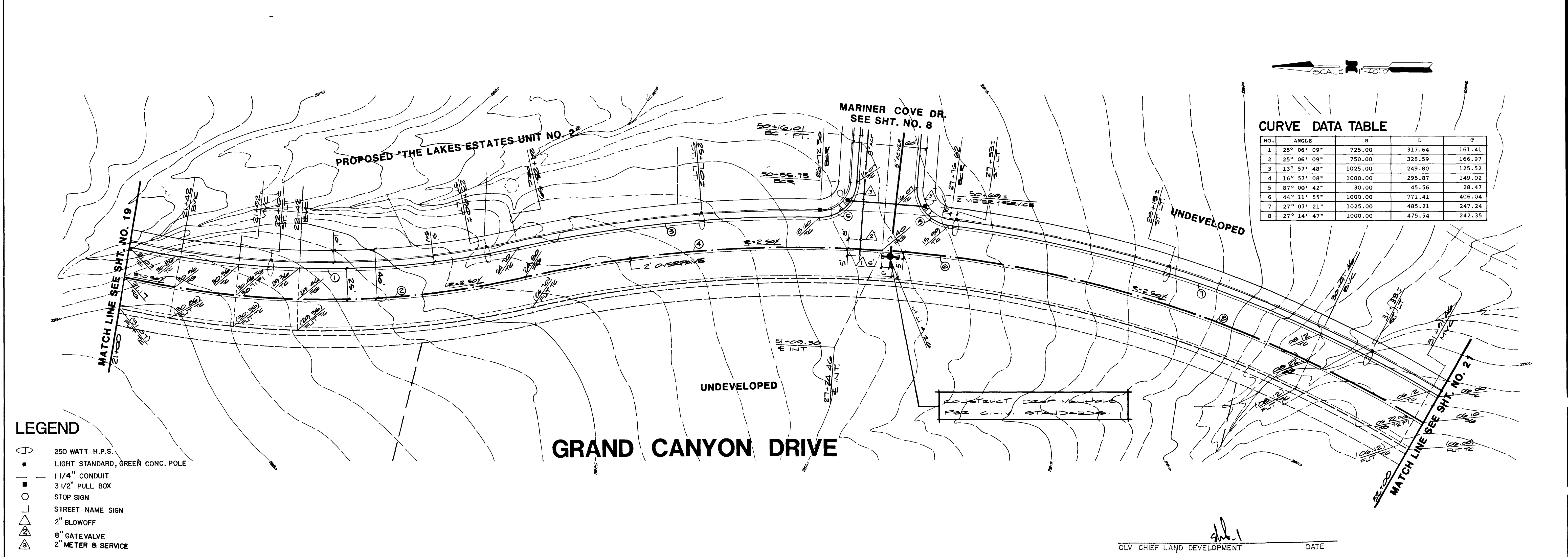


REV	DATE	BY	REVISION
1	6-22-07	EN	ISSUED FOR PERMIT
2	6-27-07	EN	REVISIONS TO PERMIT
3	6-12-07	EN	REVISIONS TO PERMIT
4	7-24-07	EN	REVISIONS TO PERMIT

SUBMITTED BY: *Paul E. Chilton* 4/20/07
ESI ENGINEERS & SURVEYORS INC.
 701 N. UNIVERSITY BLVD. SUITE 1000 DENVER, CO 80202



SCALE 1" = 40'-0"

NO.	ANGLE	R	L	T
1	25° 06' 09"	725.00	317.64	161.41
2	25° 06' 09"	750.00	328.59	166.97
3	13° 57' 48"	1025.00	249.80	125.52
4	16° 57' 08"	1000.00	295.87	149.02
5	87° 00' 42"	30.00	45.56	28.47
6	44° 11' 55"	1000.00	771.41	406.04
7	27° 07' 21"	1025.00	485.21	247.24
8	27° 14' 47"	1000.00	475.54	242.35

- LEGEND**
- 250 WATT H.P.S.
 - LIGHT STANDARD, GREEN CONC. POLE
 - 1 1/4" CONDUIT
 - 3 1/2" PULL BOX
 - STOP SIGN
 - STREET NAME SIGN
 - △ 2" BLOWOFF
 - △ 8" GATEVALVE
 - △ 2" METER & SERVICE

TITLE
STREET PLAN & PROFILE
(GRAND CANYON DRIVE STA. 21+00 TO 32+00)

PROJECT
E.1/2, SEC. 7 THE LAKES AT WEST SAHARA
PHASE 2

NO NO 5018

BY P.C. & L.Y.

DATE 4/07

SCALE 1" = 40'-0"

SHEET
20
OF 22 SHEETS

CLV CHIEF LAND DEVELOPMENT DATE

4774 16.7.71 107X-1933-2, E 1/2 Sec 7

