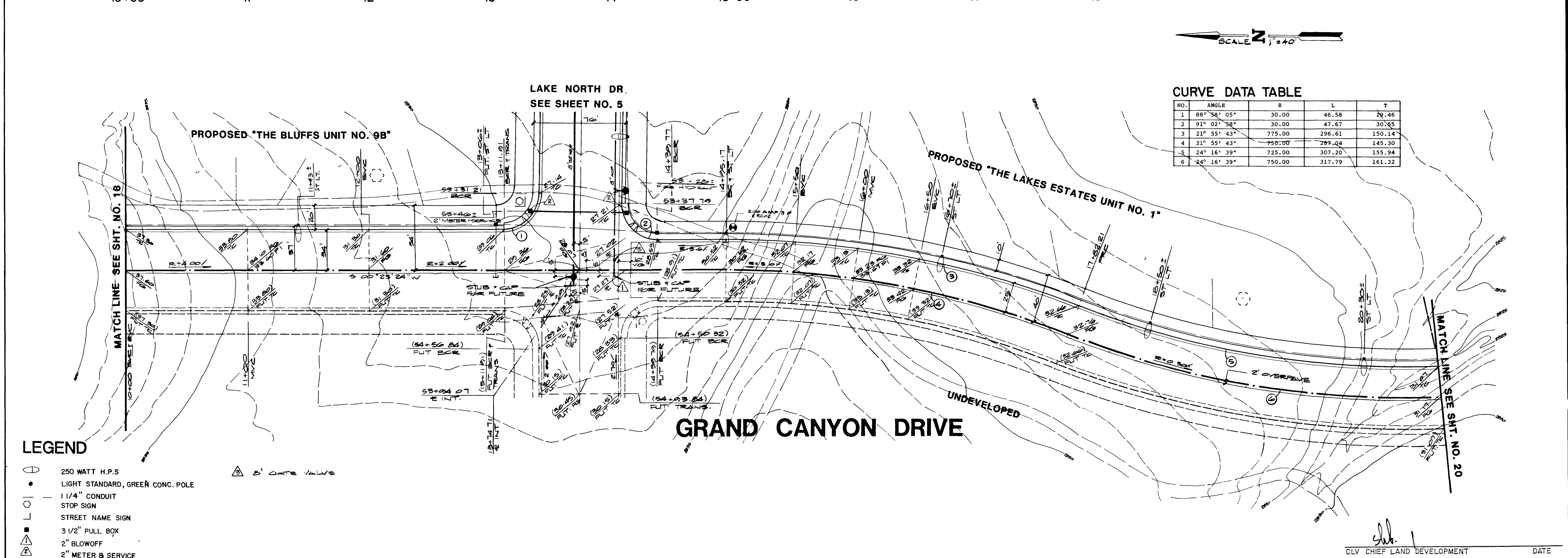


REV	DATE	BY	REVISION
1	5-22-07	ES	REVISED STREET LIGHT LOC.
2	6-10-07	ES	ADDED CURVE DATA
3	6-12-07	ES	ADDED CURVE DATA
4	7-24-07	ES	REVISED STREET LIGHT LOC.

**ESI ENGINEERS & SURVEYORS INC.**  
 100 N. CHANDLER BLVD. SUITE 1000 PHOENIX, AZ 85024  
 SUBMITTED BY: *Paul E. Valentin* 4/20/07



**CURVE DATA TABLE**

NO.	ANGLE	R	L	T
1	88° 56' 05"	30.00	46.58	28.46
2	91° 02' 38"	30.00	47.67	30.85
3	21° 55' 43"	775.00	296.61	150.14
4	21° 55' 43"	750.00	289.04	145.30
5	24° 16' 39"	725.00	307.20	155.94
6	24° 16' 39"	750.00	317.79	161.32

- LEGEND**
- 250 WATT H.P.S
  - LIGHT STANDARD, GREEN CONC. POLE
  - 1 1/4" CONDUIT
  - STOP SIGN
  - ⌋ STREET NAME SIGN
  - 3 1/2" PULL BOX
  - ▲ 2" BLOWOFF
  - ▲ 2" METER & SERVICE
  - ▲ 2" GATE VALVE

TITLE: **STREET PLAN & PROFILE**  
 (GRAND CANYON DRIVE STA. 10+00 TO 21+00)  
 PROJECT: **E.1/2, SEC. 7 THE LAKES AT WEST SAHARA**  
 PHASE 2  
 WO NO: 5018  
 BY: P.C.L.Y.  
 DATE: 4/07  
 SCALE: 1" = 40'-0"  
 SHEET: **19**  
 OF 22 SHEETS

