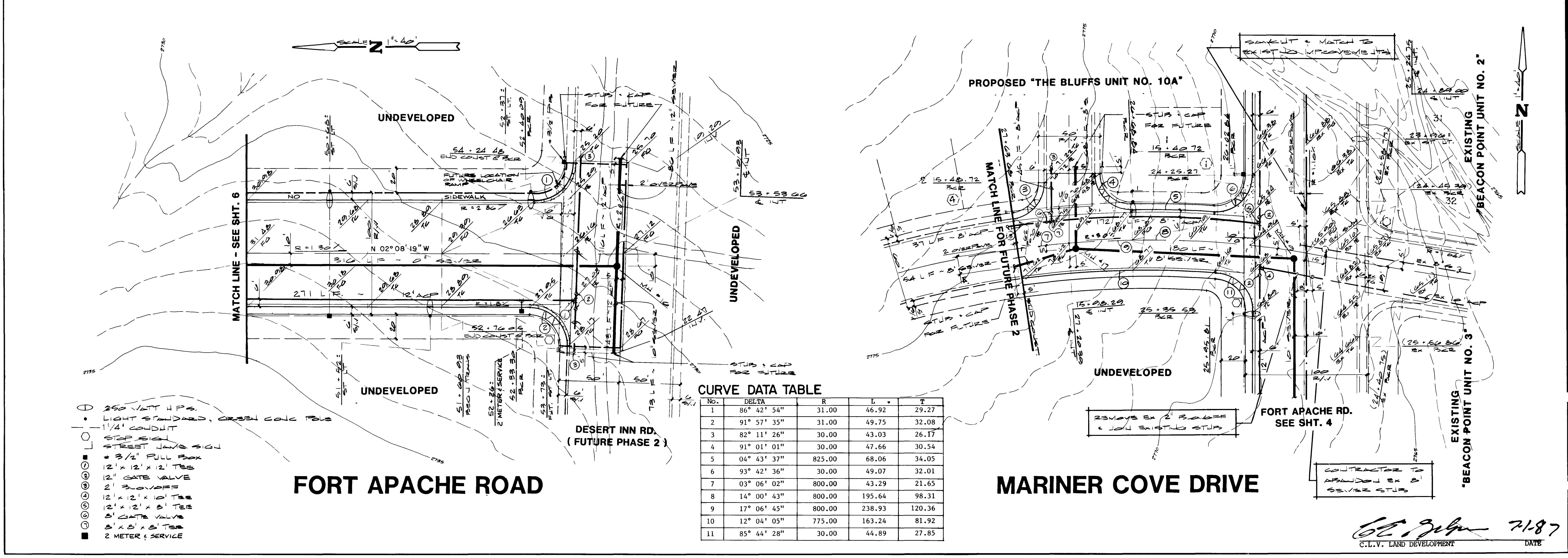


REV	DATE	BY	REVISION
1	4-18-87	ES	CONTRACTOR'S REVIEW
2	4-18-87	ES	CONTRACTOR'S REVIEW
3	4-18-87	ES	CONTRACTOR'S REVIEW

ESI ENGINEERS & SURVEYORS INC.
 7018 N. MARINER DRIVE, SUITE 117, WEST SAHARA, NV 89135
 SUBMITTED: *[Signature]* 7.18.87
 STATE OF NEVADA
 PAUL E. VALENTE
 CIVIL ENGINEER
 NO. 5535



CURVE DATA TABLE

No.	DELTA	R	L	T
1	86° 42' 54"	31.00	46.92	29.27
2	91° 57' 35"	31.00	49.75	32.08
3	82° 11' 26"	30.00	43.03	26.17
4	91° 01' 01"	30.00	47.66	30.54
5	04° 43' 37"	825.00	68.06	34.05
6	93° 42' 36"	30.00	49.07	32.01
7	03° 06' 02"	800.00	43.29	21.65
8	14° 00' 43"	800.00	195.64	98.31
9	17° 06' 45"	800.00	238.93	120.36
10	12° 04' 05"	775.00	163.24	81.92
11	85° 44' 28"	30.00	44.89	27.85

TITLE: STREET & SEWER PLAN & PROFILE
 (FORT APACHE ROAD - STA. 50+00 TO 53+10.93)
 (MARINER COVE DRIVE - STA. 25+24.75 TO 27+63.68)
 PROJECT: E.1/2, SEC. 7 THE LAKES AT WEST SAHARA PHASE 1
 WO NO: 5018
 BY: ES/PC
 DATE: 7/87
 SCALE: 1" = 40'
 SHEET: 7
 OF 11 SHEETS

4309

[Signature] 7.18.87
 C.T.V. LAND DEVELOPMENT DATE

107Y-193-1(E 1/2 Sec. 7)

