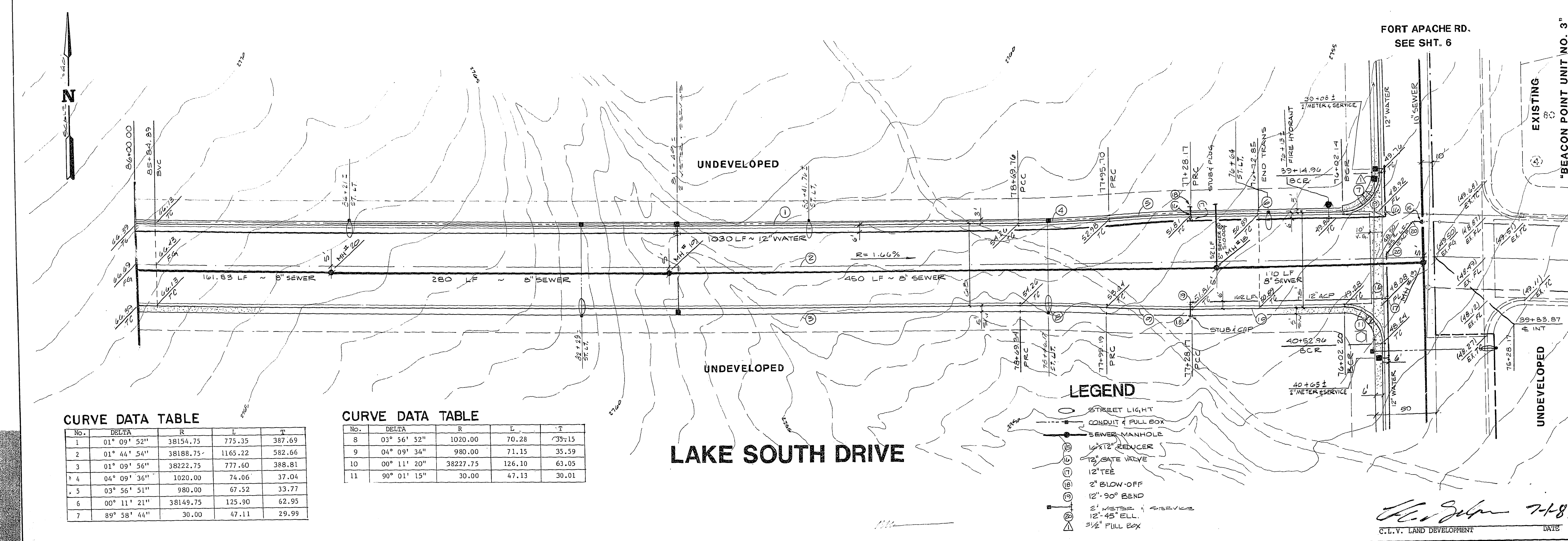


REV	DATE	BY	REVISION
1	2-28-87	WES	2" X 12" S&S
2	4-17-87	TES	CORRECT LAYOUT TO REFLECT 2" X 12" S&S
3	4-29-87	LTY	RELOCATE WATER LINE TO SOUTH SIDE OF DRIVE
4	4-29-87	LTY	RELOCATE STREET LIGHT

ESI ENGINEERS & SURVEYORS INC.
 7010 W. BEACON POINT DRIVE, SUITE 100, WEST SAHARA, AZ 85041
 PAUL E. VALENTINE
 STATE OF ARIZONA
 LICENSE NO. 17762-2028-0115
 SUBMITTED *Paul C. [Signature]* 4/13/87



CURVE DATA TABLE

No.	DELTA	R	L	T
1	01° 09' 52"	38154.75	775.35	387.69
2	01° 44' 54"	38188.75	1165.22	582.66
3	01° 09' 56"	38222.75	777.60	388.81
4	04° 09' 36"	1020.00	74.06	37.04
5	03° 56' 51"	980.00	67.52	33.77
6	00° 11' 21"	38149.75	125.90	62.95
7	89° 58' 44"	30.00	47.11	29.99

CURVE DATA TABLE

No.	DELTA	R	L	T
8	01° 56' 52"	1020.00	70.28	35.15
9	04° 09' 34"	980.00	71.15	35.59
10	00° 11' 20"	38227.75	126.10	63.05
11	90° 01' 15"	30.00	47.13	30.01

LAKE SOUTH DRIVE

LEGEND

- STREET LIGHT
- CONDUIT & FULL BOX
- SEWER MANHOLE
- 12" RENCER
- 12" GATE VALVE
- 12" TEE
- 2" BLOW-OFF
- 12" 90° BEND
- 2" METER & SERVICE
- 12" 45° ELL.
- 2 1/2" PULL BOX

STREET & SEWER PLAN & PROFILE
 (LAKE SOUTH DRIVE - STA. 75+28.17 TO 86+00)
E. 1/2, SEC. 7 THE LAKES AT WEST SAHARA
 PHASE 1

NO. NO. 5018
 BY P P P
 DATE 1/87
 SCALE 1" = 40'
 SHEET 10 OF 11 SHEETS

Paul C. [Signature] 7-187
 C.L.V. LAND DEVELOPMENT DATE
 14743 1074-1933-1 (E 1/2 sec 7)