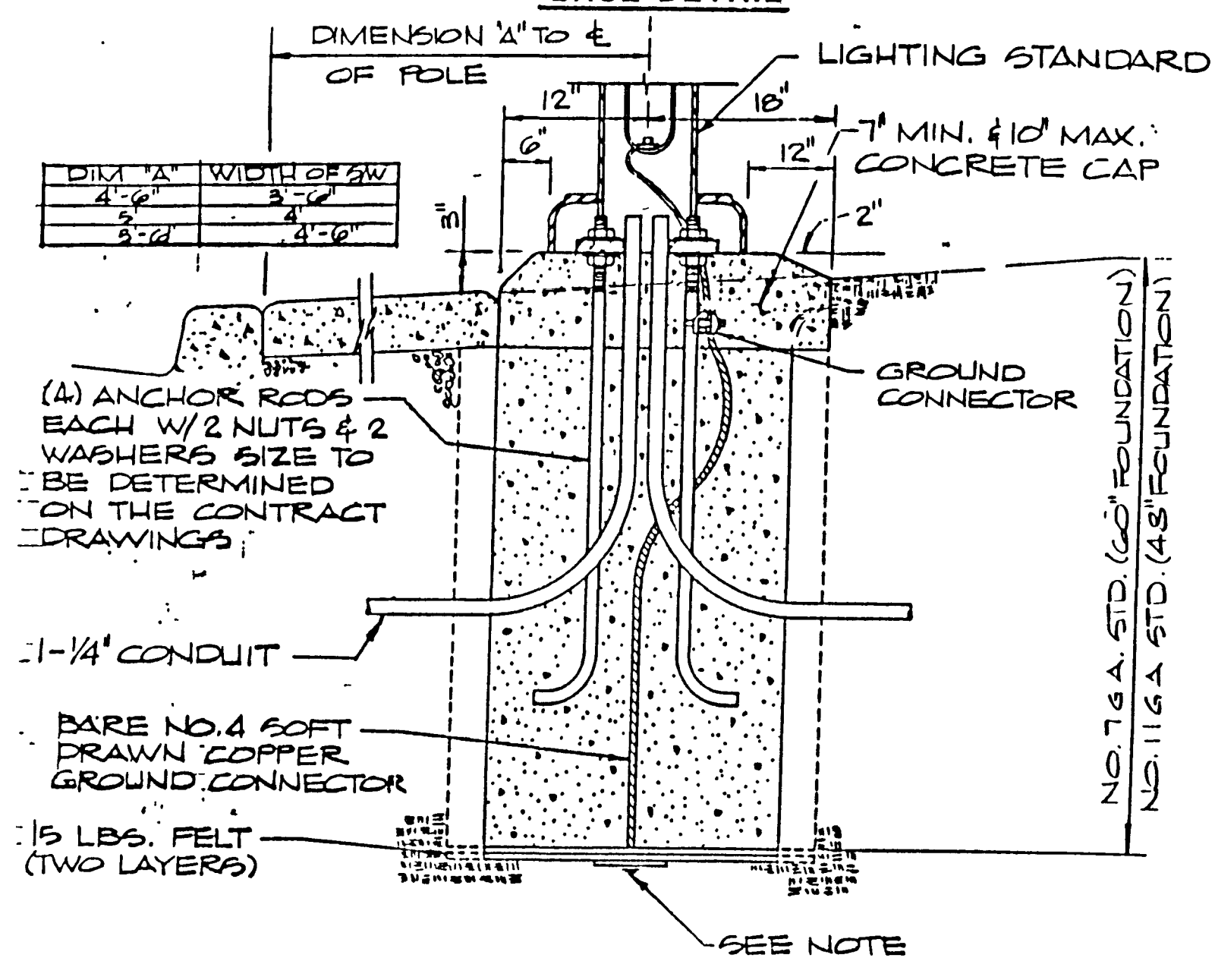
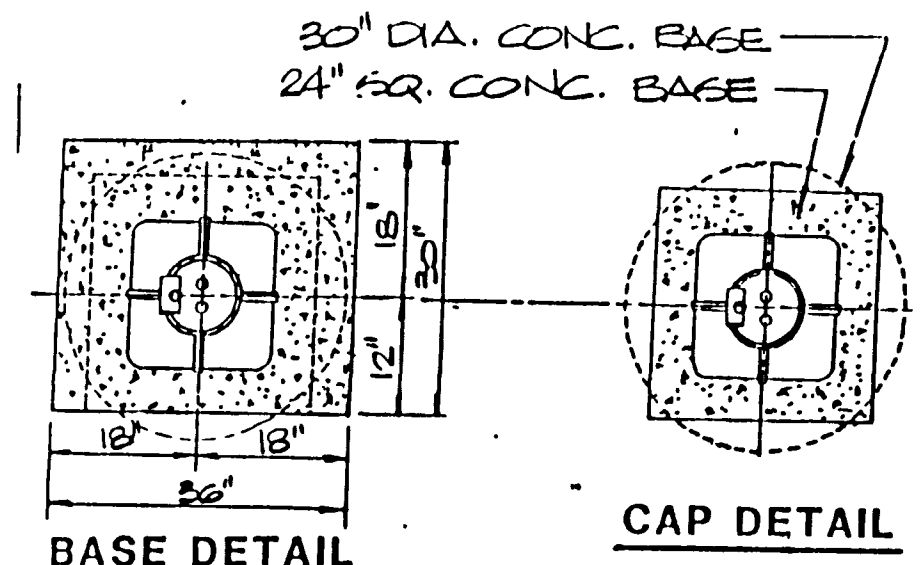
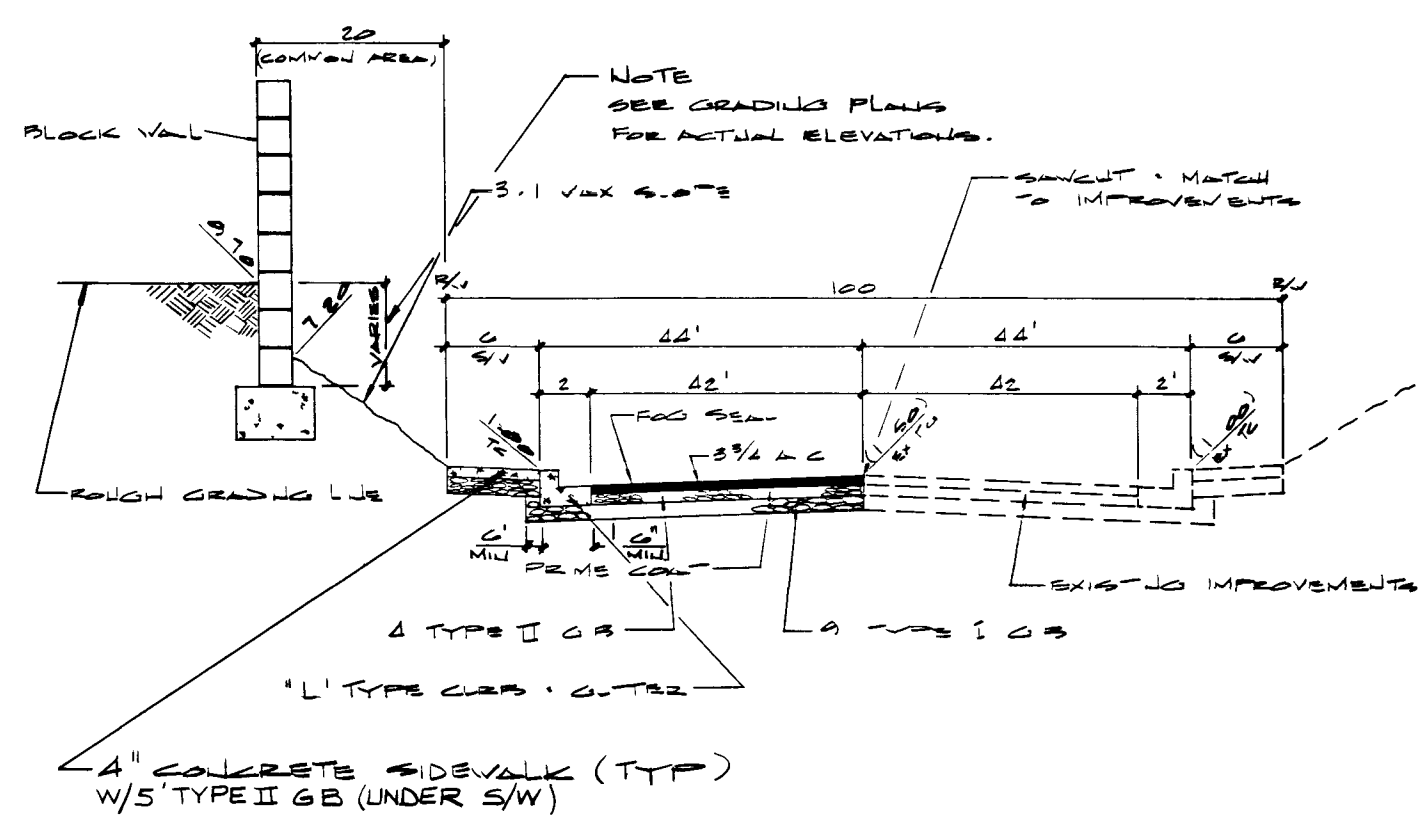


NOTE:
 1. MADE ELECTRODE SHALL BE IN ACCORDANCE W/ARTICLE 250-23 OF THE NATIONAL ELECTRICAL CODE
 2. TOP OF SLOPE IS DOWN AND AWAY FROM THE STANDARD FOR DRAINAGE...



TYPICAL STREET LIGHT DETAIL

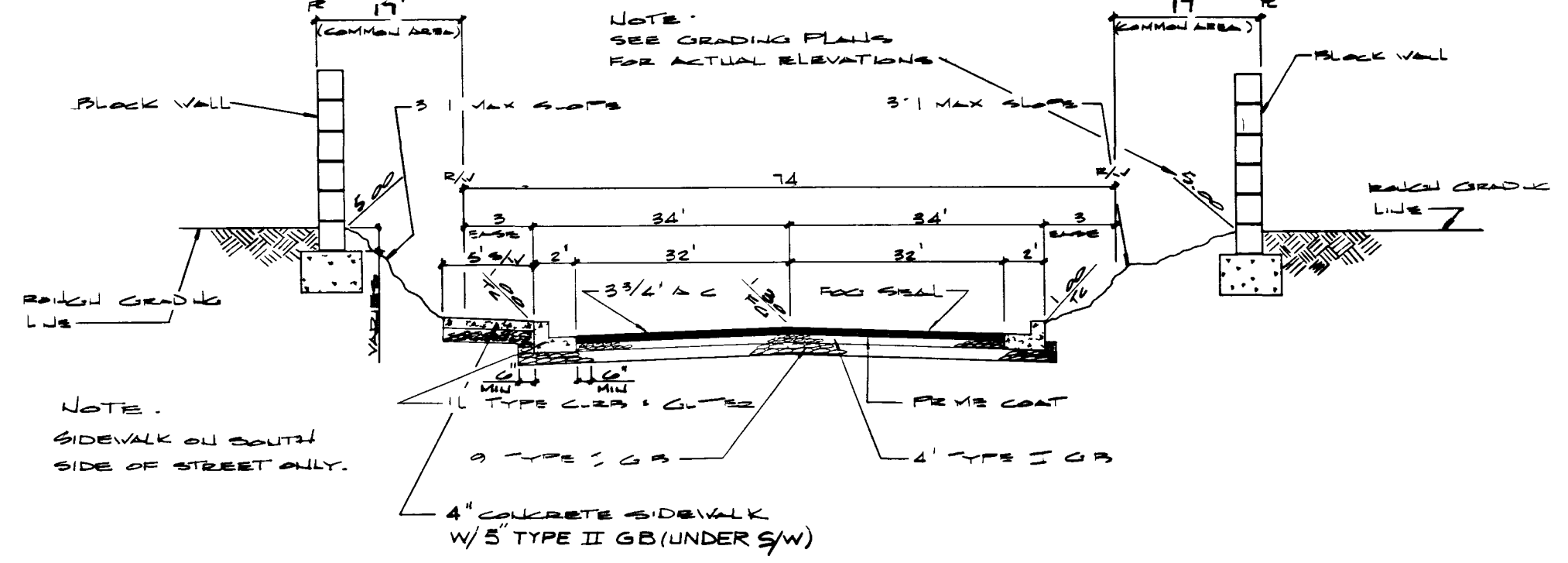
1. APPROVAL FOR USE OF NATIVE MATERIAL TO BE PROCESSED IN ACCORDANCE WITH CLV "STATEMENT OF POLICY FOR USE OF NATIVE MATERIAL IN LIEU OF IMPORTED TYPE I BASE FOR DEDICATED CITY STREETS" DATED JULY 25, 1984
2. 6" MINIMUM TYPE I OR TYPE II GRAVEL BASE UNDER CURB AND GUTTER
3. A.C. PAVEMENT TO BE 1/2" (MIN.) ABOVE LIP OF GUTTER AFTER COMPACTION.



TYPICAL 100' STREET SECTION (HALF STREET SECTION)

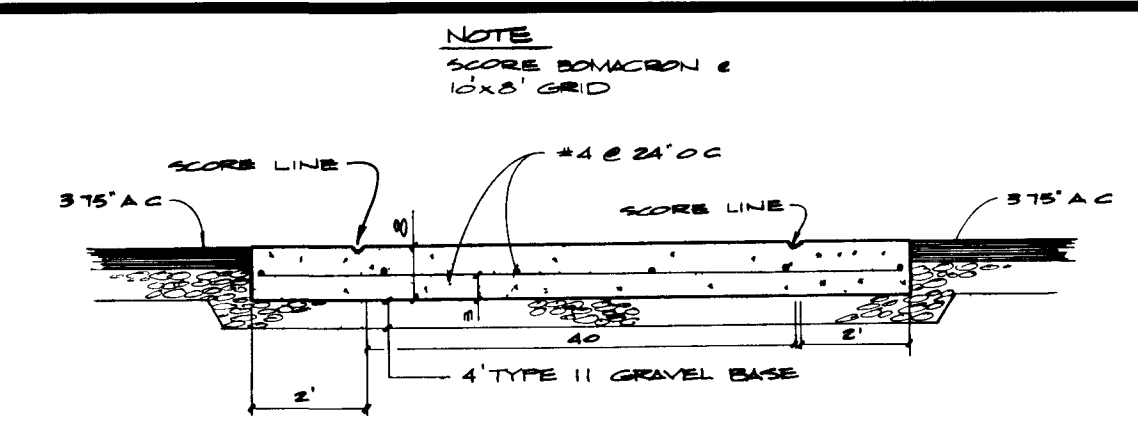
FORT APACHE ROAD

1. APPROVAL FOR USE OF NATIVE MATERIAL TO BE PROCESSED IN ACCORDANCE WITH CLV "STATEMENT OF POLICY FOR USE OF NATIVE MATERIAL IN LIEU OF IMPORTED TYPE I BASE FOR DEDICATED CITY STREETS" DATED JULY 25, 1984
2. 6" MINIMUM TYPE I OR TYPE II GRAVEL BASE UNDER CURB AND GUTTER
3. A.C. PAVEMENT TO BE 1/2" (MIN.) ABOVE LIP OF GUTTER AFTER COMPACTION.

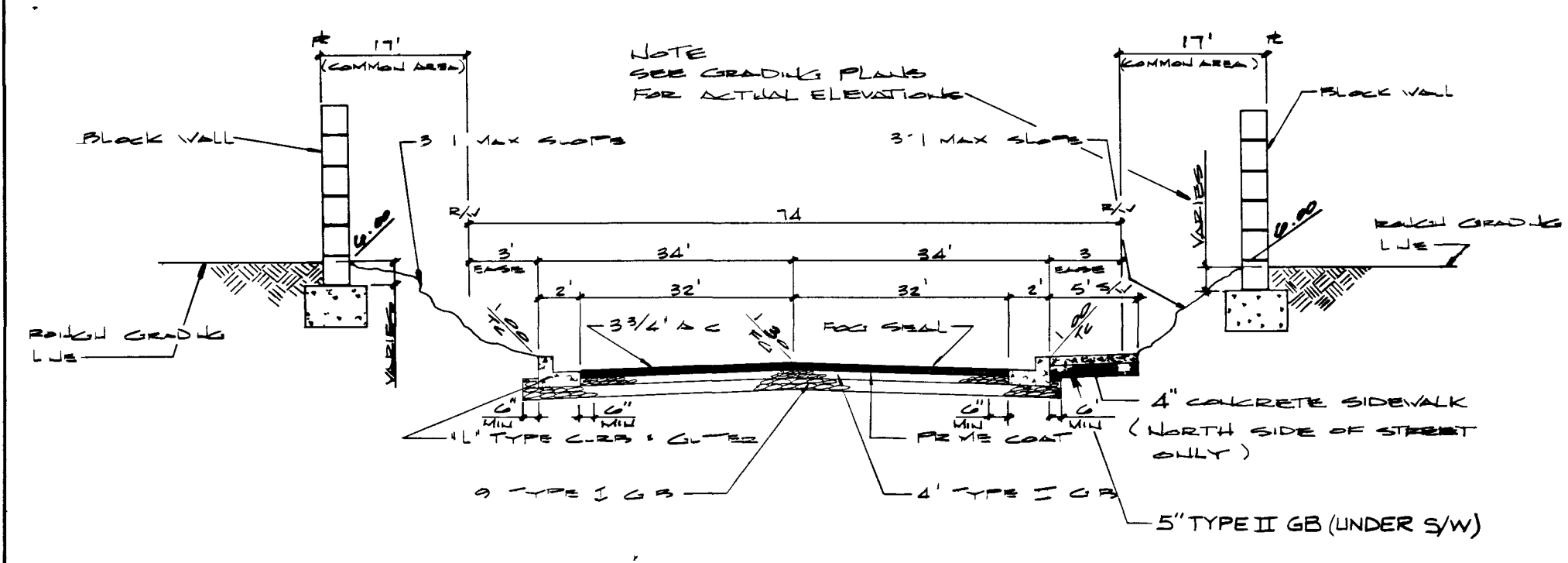


TYPICAL 74' STREET SECTION

LAKE SOUTH DRIVE



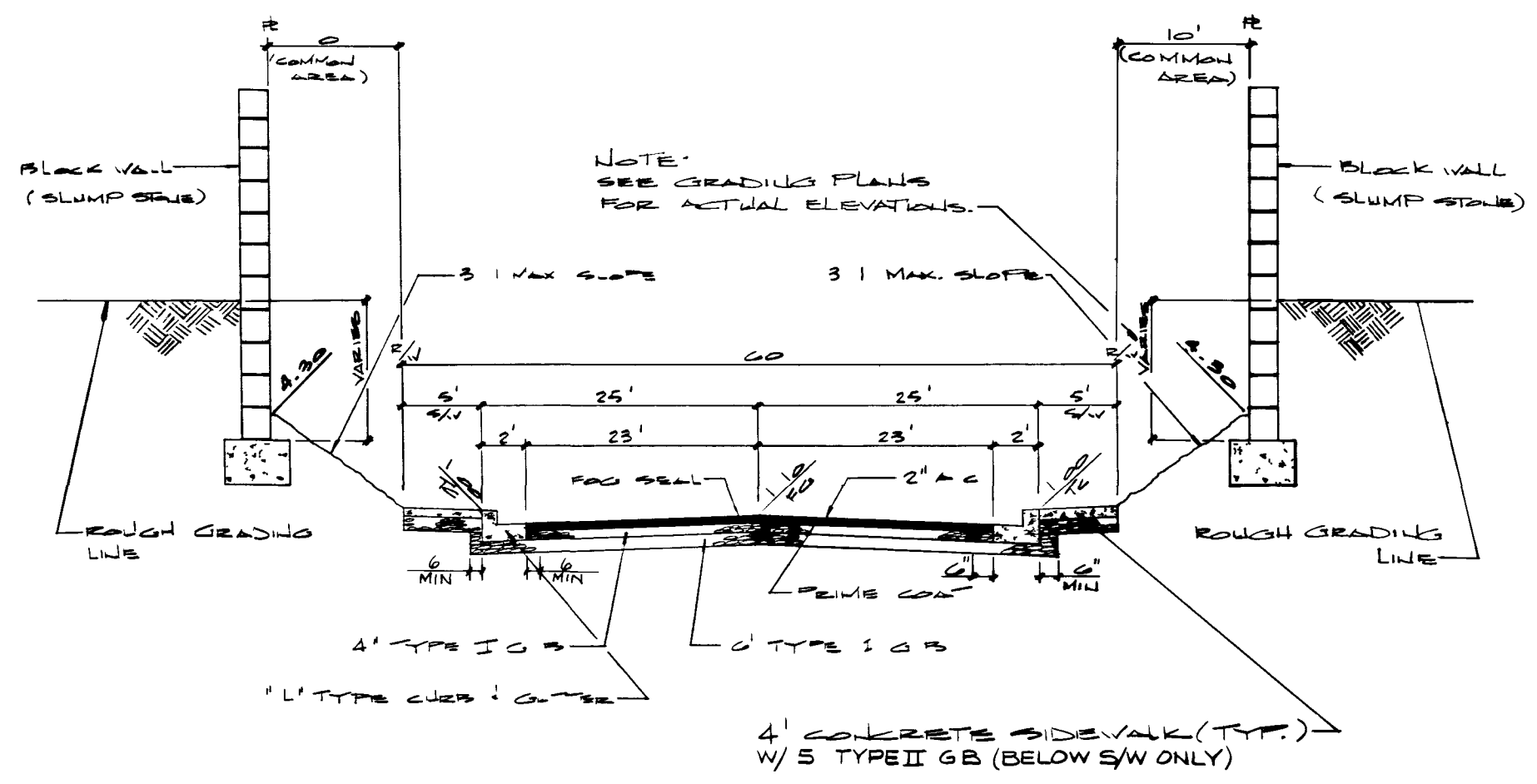
1. APPROVAL FOR USE OF NATIVE MATERIAL TO BE PROCESSED IN ACCORDANCE WITH CLV "STATEMENT OF POLICY FOR USE OF NATIVE MATERIAL IN LIEU OF IMPORTED TYPE I BASE FOR DEDICATED CITY STREETS" DATED JULY 25, 1984
2. 6" MINIMUM TYPE I OR TYPE II GRAVEL BASE UNDER CURB AND GUTTER
3. A.C. PAVEMENT TO BE 1/2" (MIN.) ABOVE LIP OF GUTTER AFTER COMPACTION.



TYPICAL 74' STREET SECTION

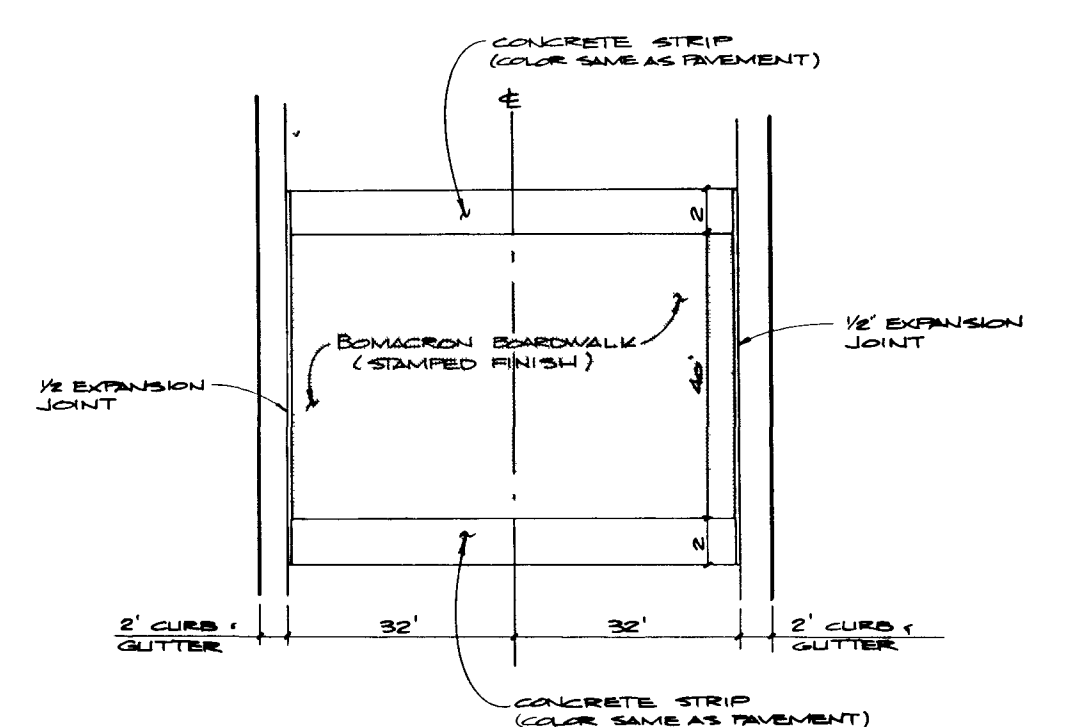
LAKE NORTH DRIVE

1. APPROVAL FOR USE OF NATIVE MATERIAL TO BE PROCESSED IN ACCORDANCE WITH CLV "STATEMENT OF POLICY FOR USE OF NATIVE MATERIAL IN LIEU OF IMPORTED TYPE I BASE FOR DEDICATED CITY STREETS" DATED JULY 25, 1984
2. 6" MINIMUM TYPE I OR TYPE II GRAVEL BASE UNDER CURB AND GUTTER
3. A.C. PAVEMENT TO BE 1/2" (MIN.) ABOVE LIP OF GUTTER AFTER COMPACTION.

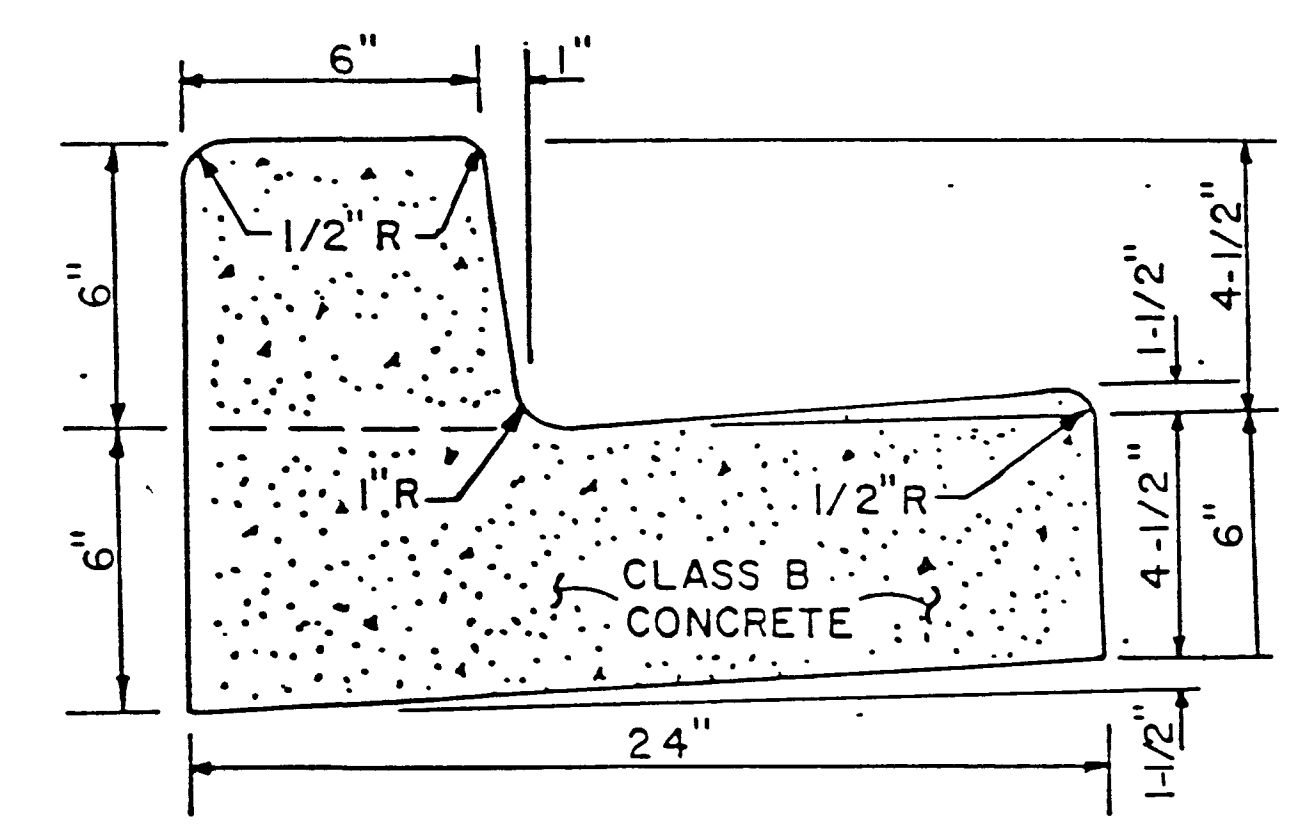


TYPICAL 60' STREET SECTION

MARINER COVE DRIVE



STAMPED CONCRETE DETAIL



"L" TYPE CURB & GUTTER SECTION

REV	DATE	BY	REVISION
1	2-28-87	ES/	CONCRETE SIDEWALK W/ 5" TYPE II GB (UNDER S/W)
2	3-10-87	ES/	ADD 1/2" AC GRID
3	3-10-87	ES/	ADD 1/2" AC GRID
4	3-24-87	ES/	ADD 1/2" AC GRID
5	5-11-87	ES/	CHANGED GRAVEL CONC. DETAIL

ESI ENGINEERS & SURVEYORS INC.
 1000 WEST 10TH AVENUE, SUITE 100
 DENVER, COLORADO 80202
 PHONE: 773-313-8450
 FAX: 773-313-8451

PAUL E. SANDERS
 LICENSED PROFESSIONAL ENGINEER
 NO. 5315

2/13/87

SUBMIT

DETAIL SHEET

PROJECT: **E. 1/2, SEC. 7 THE LAKES AT WEST SAHARA PHASE 1**

WO NO	5018
BY	M. D.
DATE	1/87
SCALE	1/2" = 1'

SHEET **2** OF 11 SHEETS

4313

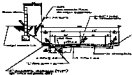
DATE: 7-1-87
 C.L.V. LAND DEVELOPMENT

1074-1933-1 (E/2 Sec. 7)

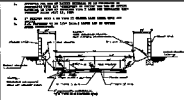


TYPICAL STREET LIGHT DETAIL

1. FINISH TO FACE OF CONCRETE SHALL BE SMOOTH AND FINISHED TO MATCH ADJACENT FINISH.
2. ALL FINISHES TO BE 1/2\"/>



TYPICAL 100' STREET SECTION
SHALL STREET SECTION
POST SPACING 8000

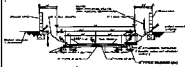


TYPICAL 74' STREET SECTION
LARGE GUTTER WIDTH



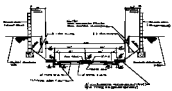
STAMPED CONCRETE DETAIL

1. FINISH TO FACE OF CONCRETE SHALL BE SMOOTH AND FINISHED TO MATCH ADJACENT FINISH.
2. ALL FINISHES TO BE 1/2\"/>

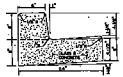


TYPICAL 74' STREET SECTION
LARGE GUTTER WIDTH

1. FINISH TO FACE OF CONCRETE SHALL BE SMOOTH AND FINISHED TO MATCH ADJACENT FINISH.
2. ALL FINISHES TO BE 1/2\"/>



TYPICAL 80' STREET SECTION
SHALL STREET SECTION
SHALL GUTTER WIDTH



T TYPE GURB & GUTTER SECTION

PROJECT NO.	DATE
DESCRIPTION	SCALE
DESIGNED BY	CHECKED BY
DRAWN BY	DATE
	

DETAIL SHEET

E. J. V., SEC. 7 THE LAKES AT WEST SAMARRA

DATE	BY
DATE	BY
DATE	BY