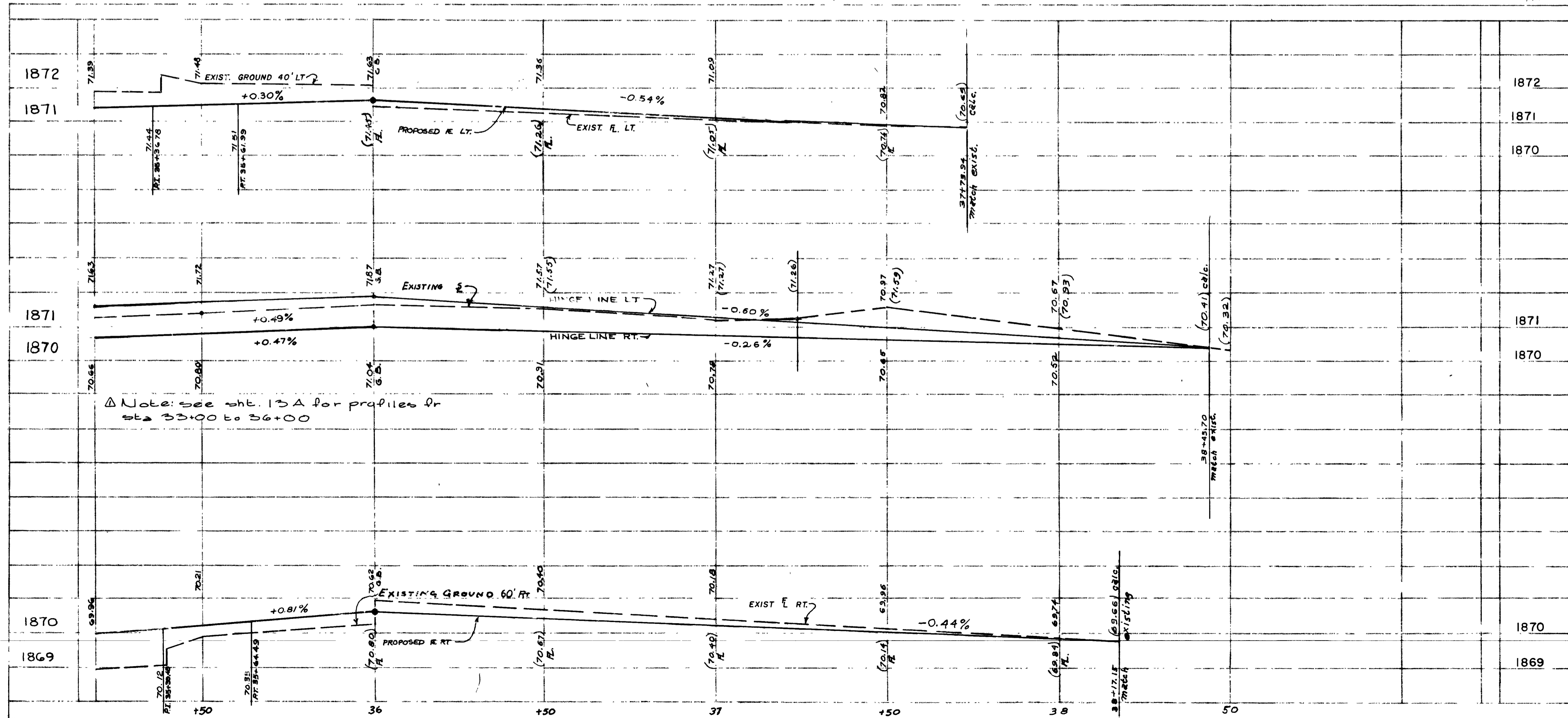


35+16.49 EASTERN = 1+00.00 BALLARD

39+24.28 EASTERN = 102+43.49 CHARLESTON

CONTRACT DRAWING
Aug. 17, 1973

EXISTING UTILITIES ARE LOCATED ON THE PLANS FOR THE CONVENIENCE OF THE CONTRACTOR ONLY. THE CONTRACTOR SHALL BEAR FULL RESPONSIBILITY FOR PROTECTION OF UTILITIES AND THE CITY BEARS NO RESPONSIBILITY FOR UTILITIES NOT SHOWN ON THE PLANS OR NOT IN THE LOCATION SHOWN ON THE PLANS.



APPROXIMATE QUANTITIES

ITEM NO.	DESCRIPTION	CLV.	R. S. H.	TOTAL	UNIT
200-100	Concrete Removal		311	311	LS.
201-100	Excavation		286	286	GAL.
334-200	55-1-h Emulsified Asphalt		141	141	C.Y.
502-200	Type II Gravel Base		2710	2710	S.Y.
535-500	1/2" Open Grade Plant-Mix		1614	1614	TON
534-119	9 1/2" Asphalt Concrete Pavement		339	339	L.F.
340-014	"L" Type Curb And Gutter (24")		3396	3396	S.F.
340-114	Concrete Sidewalk		1510	1510	S.F.
340-146	6" Concrete Island		37	37	L.F.
121-215	15" R.C.P. Class III		1	1	EA.
121-244	24" R.C.P. Class III		14	14	TON
500-200	Drop Inlet (6" Opening)		373	373	GAL.
334-004	2" A.C. Pavement		416	416	S.F.
304-800	Bituminous Prime Coat		18	18	GAL.
340-326	Alley Gutter		2	2	EA.
333-103	Bituminous Fog Seal		1	1	EA.
512-500	Adjust Manhole		1	1	EA.
560-200	Relocate Fire Hydrant		1	1	EA.

CURVE DATA

CURVE NO.	DELTA	RADIUS	LENGTH	TAN. LOC.
17	90° 00' 00"	25.00'	39.27'	25.00' B-C
18	90° 00' 00"	20.00'	31.42'	20.00' R/W
19	90° 29' 15"	25.00'	39.48'	25.21' B-C
20	90° 29' 15"	20.00'	31.59'	20.17' R/W
23	14° 04' 11"	150.00'	36.83'	16.51' B-C
24	90° 29' 15"	20.00'	31.59'	20.17' B-C
25	90° 00' 00"	20.00'	31.42'	20.00' B-C
1	180° 00' 00"	2.00'	6.28'	0 B-C

APPROVED: *[Signature]* 8-10-73
TRAFFIC ENGINEER DATE

REVISIONS:

REVISION NO.	DESCRIPTION	BY	DATE	APPROVED
Δ	Profile revision	CPM	8/10/73	<i>[Signature]</i>

CITY OF LAS VEGAS NEVADA
DEPARTMENT OF PUBLIC WORKS
SERVICES DIVISION

EASTERN AVENUE
SAHARA AVE. TO CHARLESTON BLVD.

W.O. NO. 7672	F.BK. NO. 68-4X	DATE	DRAWING NO.
SC. (H) 1" = 20'	SC. (V) 1" = 2'	11-13-72	107-V835A
DES. Billingsley, G. J. M.		FILE NO.	
DR. McDowell, J.		APPROVED BY DIRECTOR OF PUBLIC WORKS	
<i>[Signature]</i>		SHEET 14 OF 30	

