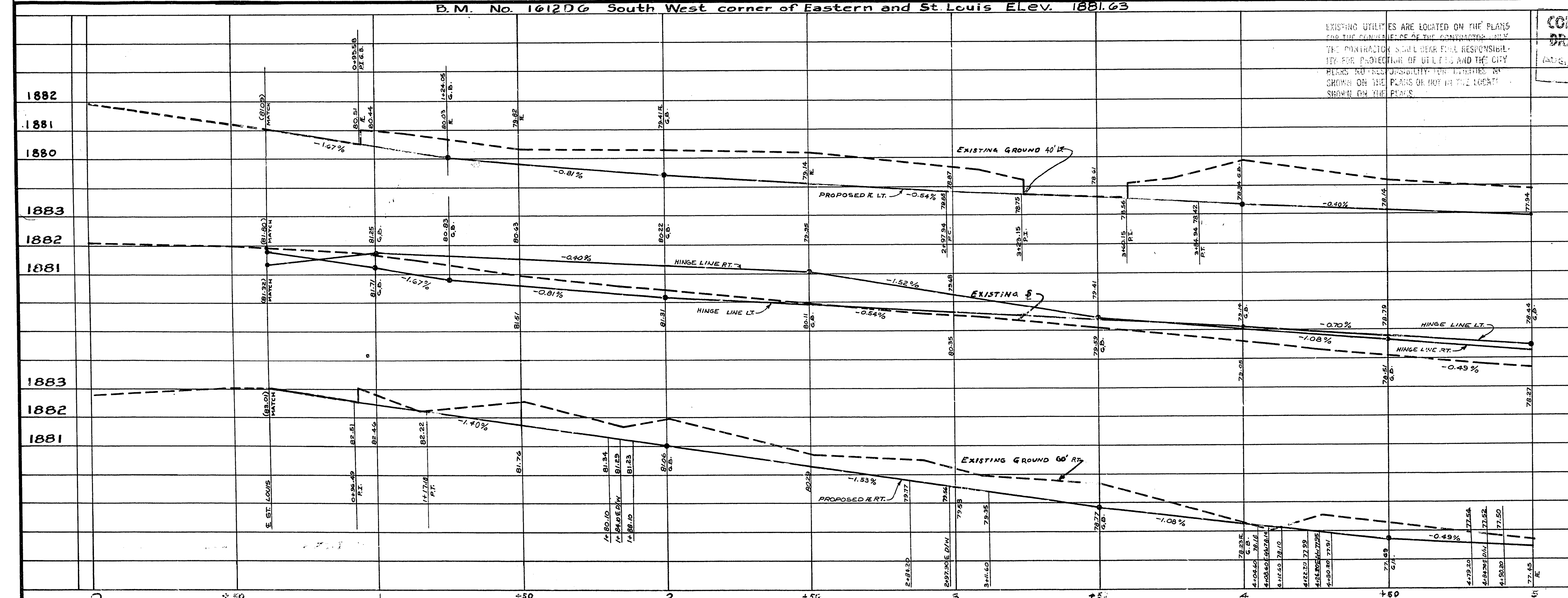


ITEM NO.	DESCRIPTION	C.L.V.	R.S.H.	TOTAL	UNIT
334.800	Bituminous Prime Coat		1431	1431	GAL.
200.101	Remove 18" Curb And Gutter		109	109	L.F.
340.015	Construct 18" Curb And Gutter		129	129	L.F.
200.110	Concrete Removal		10	10	L.S.
200.300	Remove Tree (4" x 10" in.)		1	1	E.A.
200.400	Remove Tree (Over 10")		493	493	C.Y.
201.100	Excavation		757	757	GAL.
334.200	55-lb. Emulsified Asphalt		205	205	C.Y.
302.200	Type II Gravel Base		4266	4266	S.Y.
334.500	1/2" Open Graded Plant-Mix		2642	2642	TONS
334.119	9 1/2" Asphalt Concrete Pavement (Multi Lift)		12	12	TONS
334.503	1 1/2" Asphalt Concrete Island Surfacing		695	695	L.F.
340.011	1 1/2" Type Curb And Gutter (24")		142	142	L.F.
340.017	Concrete Tack On Curb (7" Base)		4222	4222	S.F.
340.146	6 Inch Island Concrete		1991	1991	S.F.
340.316	Residential Driveway		734	734	S.F.
340.319	Valley Gutter		675	675	S.F.
340.226	Commercial Driveway		128	128	S.F.
121.212C	Install 12" R.C.P. Class III		84	84	L.F.
121.230C	Install 30" R.C.P. Class III		3	3	L.F.
500.200	Drop Inlet		2	2	E.A.
512.500	Adjust Manhole		4	4	E.A.
520.200	Relocate Fire Hydrant		1	1	E.A.
163.006	3/4" Water Service And Plug		1	1	E.A.
334.510	10mm Asphalt Coloring		97	97	S.Y.



Curve No.	Delta	radius	length	tangent	offset
1	180° 00' 00"	2.00'	6.28'	0	b.c.
2	92° 17' 09"	28.50'	45.90'	29.66'	b.c.
3	91° 08' 24"	22.50'	35.79'	22.95'	R/W
4	81° 31' 53"	30.00'	42.69'	22.86'	b.c.
5	80° 23' 08"	24.00'	33.67'	20.28'	b/s
6	81° 42' 52"	22.50'	32.09'	19.46'	R/W
7	90° 29' 00"	25.00'	39.48'	25.21'	b.c.
8	90° 29' 00"	20.00'	31.58'	20.17'	b/s
9	90° 29' 00"	20.00'	31.58'	20.17'	R/W
10	89° 31' 00"	25.00'	39.06'	24.79'	b.c.
11	89° 31' 00"	20.00'	31.25'	19.83'	b/s
12	89° 31' 00"	20.00'	31.25'	19.83'	R/W
13	10° 53' 15"	250.00'	47.51'	23.62'	b.c.
14	09° 43' 28"	510.00'	86.56'	43.38'	b/c

revision No.	description	by	date	approval
1	Transition East of Intersection	C.R.M.	9-4-73	[Signature]
2	Pork Chop Island Construction	C.R.M.	11-7-73	[Signature]

CITY OF LAS VEGAS NEVADA
DEPARTMENT OF PUBLIC WORKS
SERVICES DIVISION

EASTERN AVENUE
SAHARA AVE. TO CHARLESTON BLVD.

W.O. NO. 7672	E.B.K. NO. C8-4X	DATE	DRAWING NO.
SC. (H) 1" = 20'	SC. (V) 1" = 2'	10-18-72	107-V835A
DES. G. Billingsley	DR. Calcomp @ B.D.P./E.S.M.		FILE NO.
APPROVED BY DIRECTOR OF PUBLIC WORKS			

SHEET 7 OF 30

17-4-33