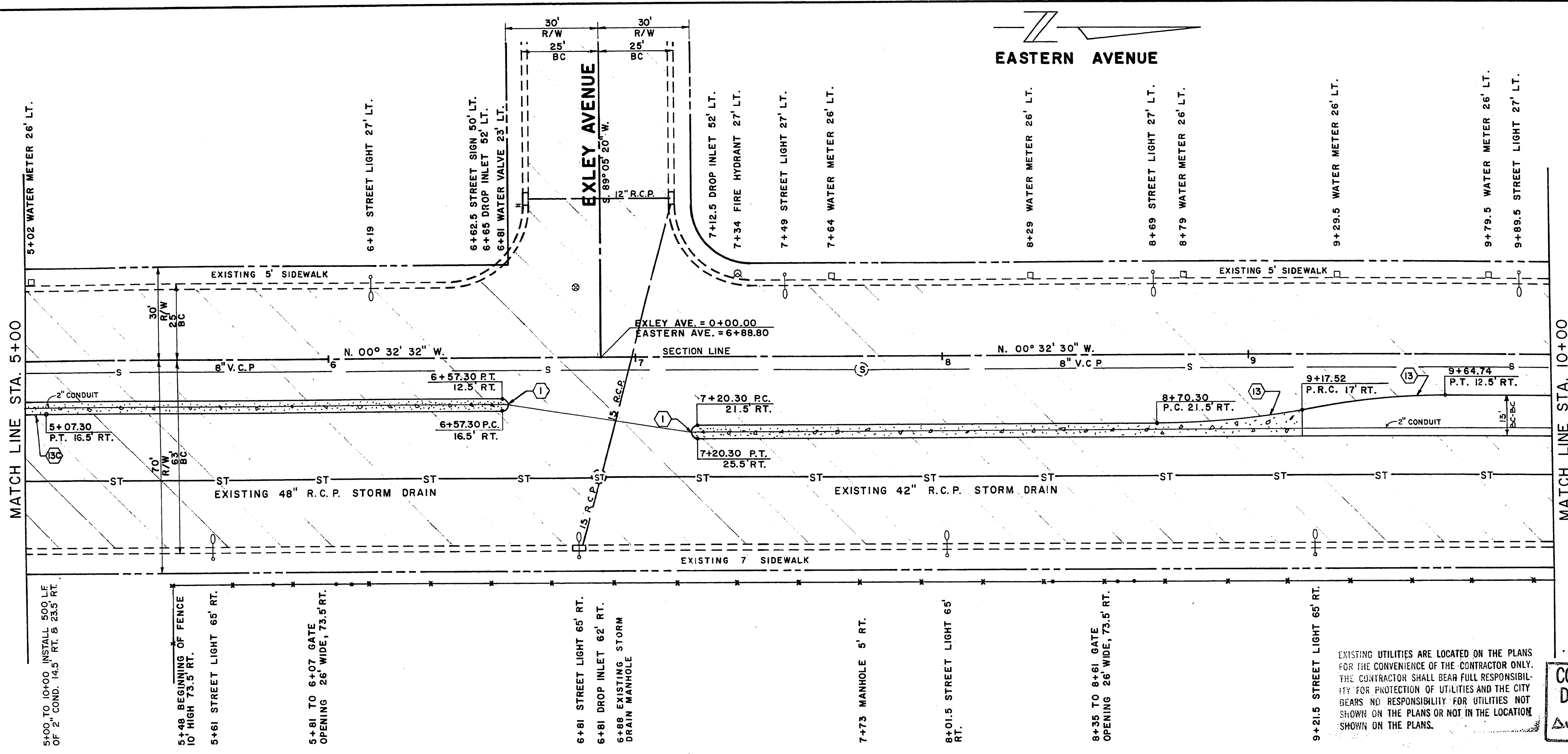


**EASTERN AVENUE**



**CONTRACT DRAWING**  
AUG 12, 1978

QUANTITIES THIS SHEET		C.L.V.	R.S.H.	TOTAL	UNIT
302.200	TYPE II GRAVEL BASE	14	14	14	C.Y.
334.503	1 1/2" ASPHALT CONCRETE ISLAND SURFACING	10	10	10	TONS
340.027	CONCRETE TACK-ON-CURB (7" BASE)	165	165	165	L.F.
340.146	6" ISLAND CONCRETE	1930	1930	1930	S.F.
33.910	ISLAND ASPHALT COLORING	1.4	1.4	1.4	S.Y.

CURVE DATA				
NO.	DELTA	RADIUS	LENGTH	TANGENT
(1)	180° 00' 00"	2.00'	6.28'	∞
(3)	10° 53' 15"	250.00'	47.51'	23.82'
(3C)	1° 40' 24"	250.00'	7.30'	3.65'

REV. NO.	DESCRIPTION	BY	DATE	APPROVAL

**CITY OF LAS VEGAS NEVADA**  
DEPARTMENT OF PUBLIC WORKS  
SERVICES DIVISION

**EASTERN AVENUE**  
SAHARA AVE. TO CHARLESTON BLVD.

W.O. NO. 7672	F.B.K. NO. 68-4X	DATE	DRAWING NO.
SC. (H) 1" = 20'	SC. (V) 1" = 2'	10-14-72	107-V835A
DES. P. KEELY	C.P.M.		FILE NO.
DR. R. W. WEIGANG			
APPROVED BY DIRECTOR OF PUBLIC WORKS			

SHEET 5 OF 30

17-4-31