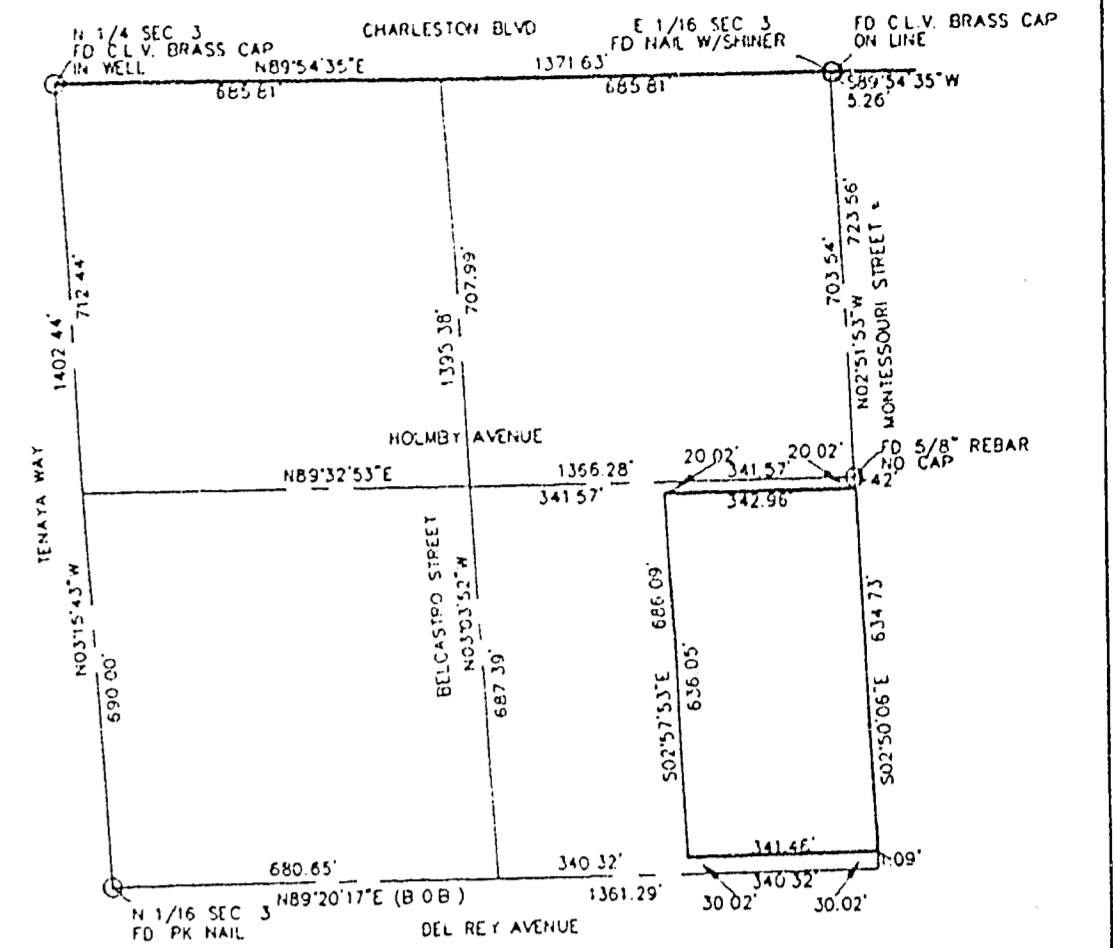
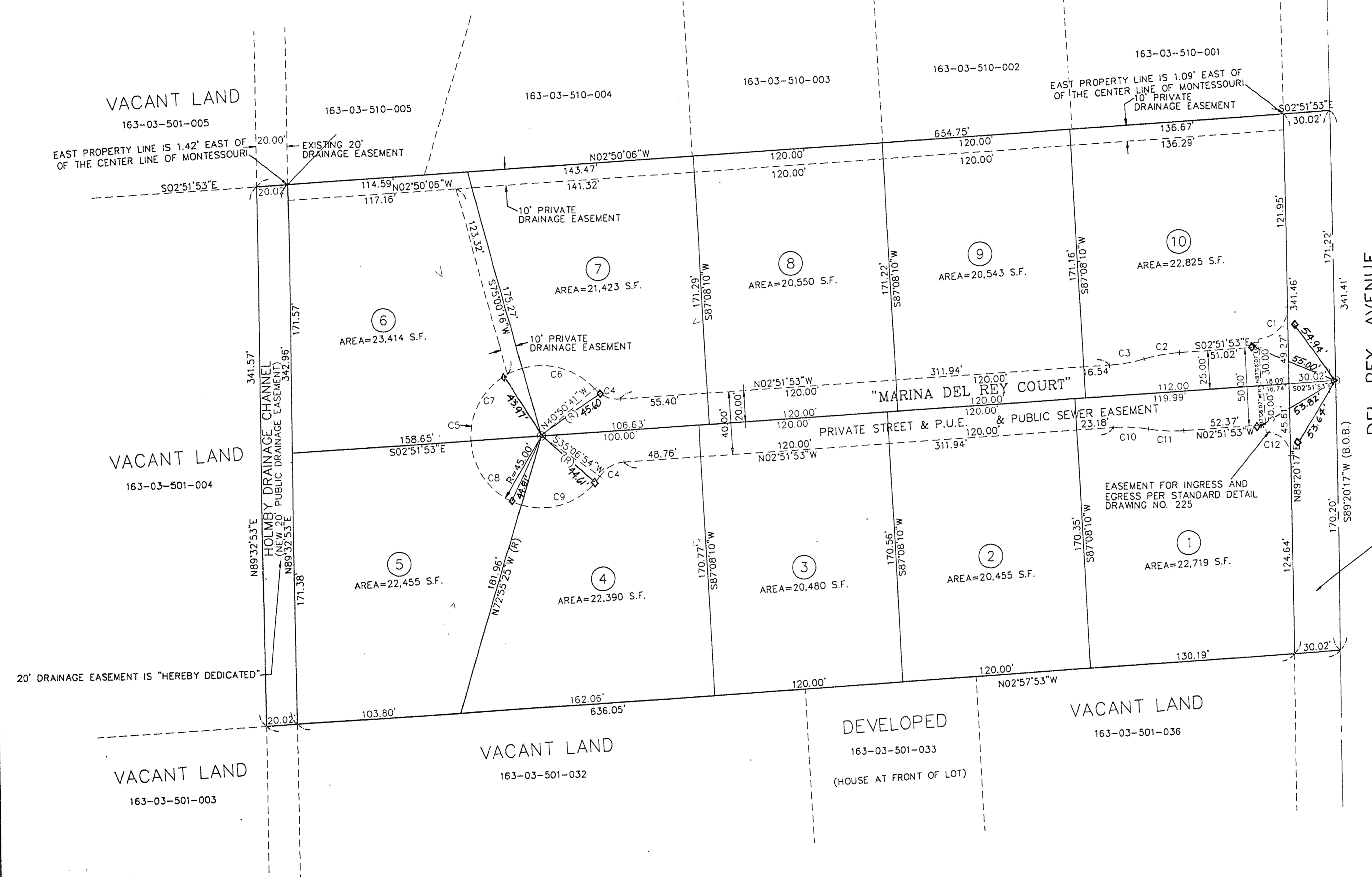


950728

02132

MONUMENT TIE MAP
 FINAL MAP
DEL REY ESTATES
 A PORTION OF THE NW 1/4 OF THE NE 1/4 OF
 SECTION 3, TOWNSHIP 21 SOUTH, RANGE 60 EAST, M.D.B. & M.
 CITY OF LAS VEGAS, CLARK COUNTY, NEVADA

CASA DEL REY SUBDIVISION BOOK 48 PAGE 70



SURVEY ANALYSIS
 NTS
 NW 1/4, NE 1/4, SEC. 3,
 T. 21 S., R. 60 E., M.D.B. & M.

CURVE TABLE

CURVE	RADIUS	LENGTH	TANGENT	DELTA
C1	20.00	30.65	19.25	87°47'50"
C2	100.00	22.41	11.25	12°50'19"
C3	100.00	22.41	11.25	12°50'19"
C4	20.00	18.16	9.76	52°01'12"
C4	20.00	18.16	9.76	52°01'12"
C5	45.00	22.08	11.53	28°40'25"
C6	45.00	50.38	35.13	28°40'25"
C7	45.00	61.16	36.36	77°52'09"
C8	45.00	55.02	31.54	70°03'32"
C9	45.00	56.52	32.67	71°57'40"
C10	100.00	22.41	11.25	12°50'19"
C11	100.00	22.41	11.25	12°50'19"
C12	15.00	24.14	15.59	92°12'07"

30 FOOT RIGHT OF WAY IS "HEREBY DEDICATED"

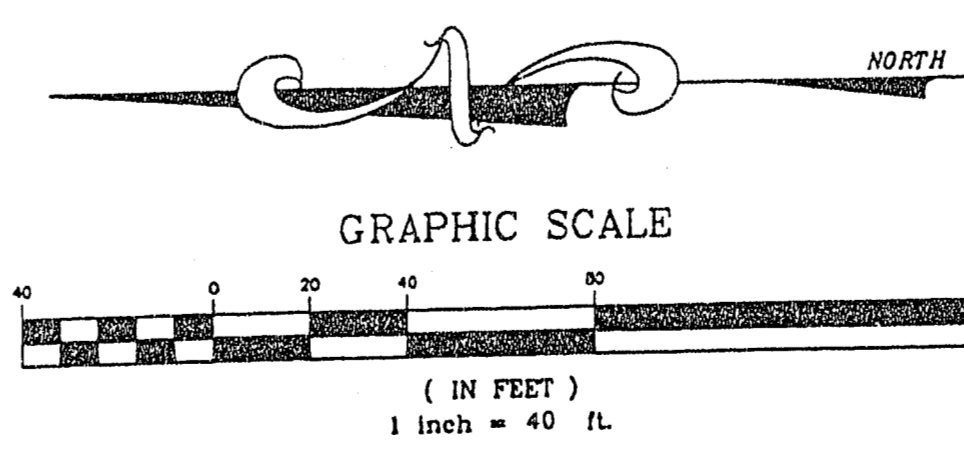
LEGEND

- MONUMENT FOUND AS NOTED
- ⊙ SET TYPE III MONUMENT PER CLARK COUNTY IMPROVEMENT STANDARDS P.L.S. 7309
- SET NAIL & TAG - P.L.S. 7309
- C4 CURVE NUMBER
- ⑤ LOT NUMBER (TOTAL LOTS = 10)
- (R) RADIAL BEARING
- ◇ SET BRASS CAP REFERENCE MONUMENTS IN CURB

NOTE: PURSUANT TO NRS 278.371 ALL REAR LOT CORNERS SHALL BE SET WITH A NAIL AND SHINER ON BLOCK WALL AND ALL FRONT OR SIDE LOT CORNERS ADJOINING PUBLIC RIGHT-OF-WAY SHALL BE MARKED BY THE PROLONGATION OF PROPERTY LINES.

I, **TERRY D. CARTER**, A DULY REGISTERED LAND SURVEYOR IN THE STATE OF NEVADA, DO HEREBY CERTIFY THAT THE MONUMENTS HAVE BEEN SET AND THE TIE DISTANCES ESTABLISHED AS SHOWN HEREON. THIS SURVEY WAS COMPLETED ON 6-3-96.

Terry D. Carter
 6-3-96



ANY SUBSEQUENT CHANGES TO THIS MAP SHOULD BE EXAMINED AND MAY BE DETERMINED BY REFERENCE TO THE COUNTY RECORDER'S CUMULATIVE MAP INDEX, NRS 278.5695

