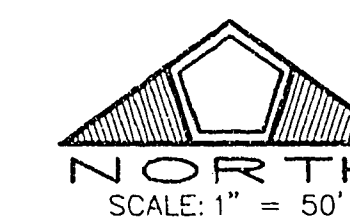


MONUMENT TIE MAP DIAMOND HILLS

A PORTION OF THE EAST HALF (E 1/2) OF THE SOUTHWEST QUARTER (SW 1/4) OF THE NORTHWEST QUARTER (NW 1/4) OF THE SOUTHWEST QUARTER (SW 1/4) OF SECTION 4, TOWNSHIP 21 SOUTH, RANGE 60 EAST, M.D.M., CITY OF LAS VEGAS, CLARK COUNTY, NEVADA.



NOTES:

- ALL REAR PROPERTY CORNERS ARE REBAR AND ALUMINUM CAP P.L.S. 4541 UNLESS WALL IS BUILT THEN NAIL AND BRASS TAG P.L.S. 4541 SET IN WALL DENOTES SIDE PROPERTY LINE. SET SAWCUT IN THE TOP OF CURB ON THE SIDE PROPERTY LINES EXTENDED.
- COMMUNITY SEWERS ARE TO BE PROVIDED BY THE CITY OF LAS VEGAS
- ALL STREETS ARE PUBLIC STREETS HEREBY DEDICATED.

LEGEND

- FOUND MONUMENT AS SHOWN AND DESCRIBED
- SET TYPE III MONUMENT P.L.S. 4541 AND TYPE IV MONUMENTS IN TOP OF CURB (UNLESS OTHERWISE NOTED)
- 20 TOTAL LOTS IN SUBDIVISION = 20
TOTAL ACREAGE = 4.48 ACRES
- ① CURVE NUMBER
- SUBDIVISION BOUNDARY LINE
- STREET CENTERLINE

SURVEYOR'S CERTIFICATE

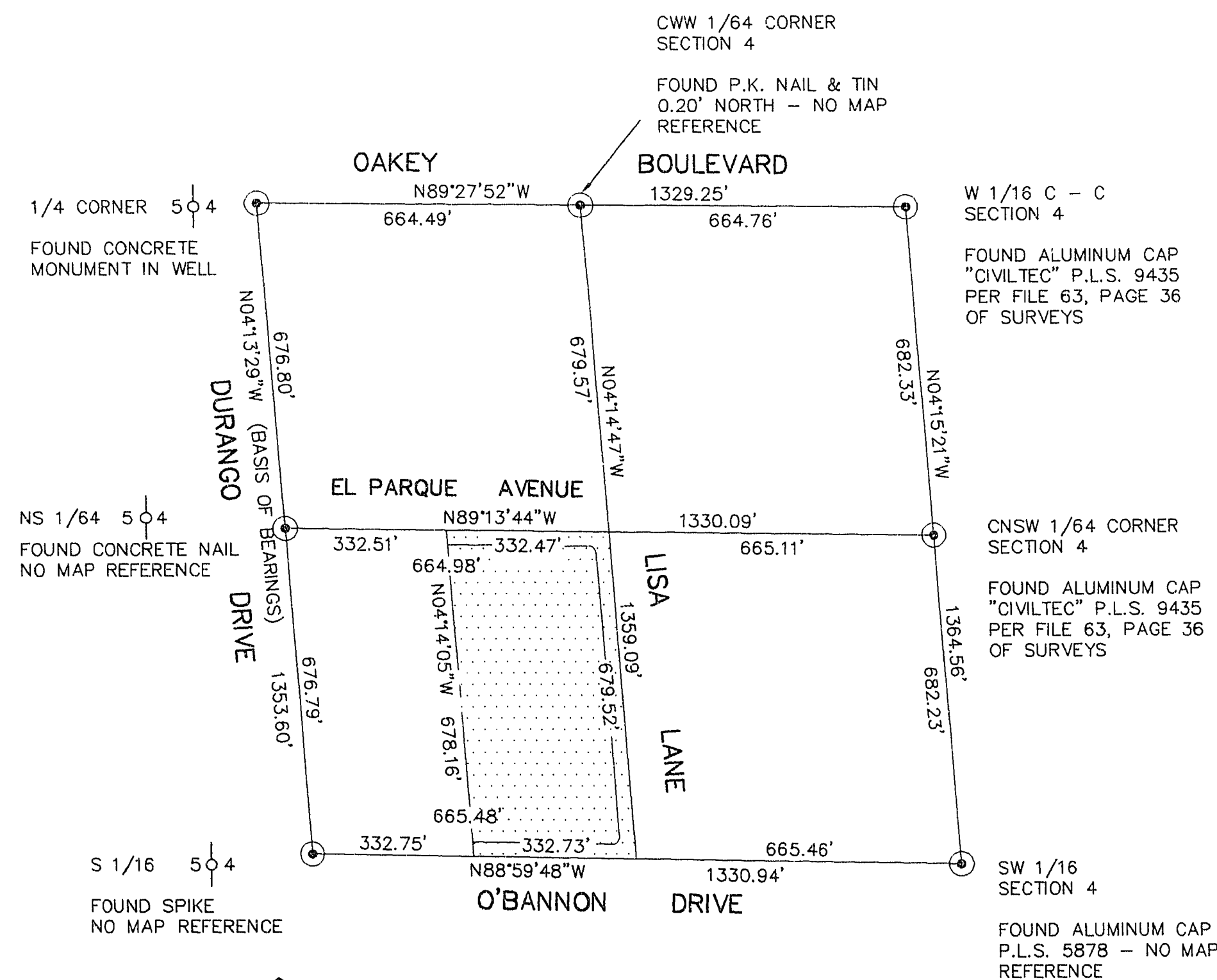
I, FREDERICK W. ORBAN, A PROFESSIONAL LAND SURVEYOR REGISTERED IN THE STATE OF NEVADA, DO HEREBY CERTIFY THAT THE MONUMENTS HAVE BEEN SET AND THE TIE DISTANCES ESTABLISHED AS SHOWN HEREON. THIS SURVEY WAS COMPLETED ON APRIL 6, 1995.

Frederick W. Orban
Professional Land Surveyor
No. 541

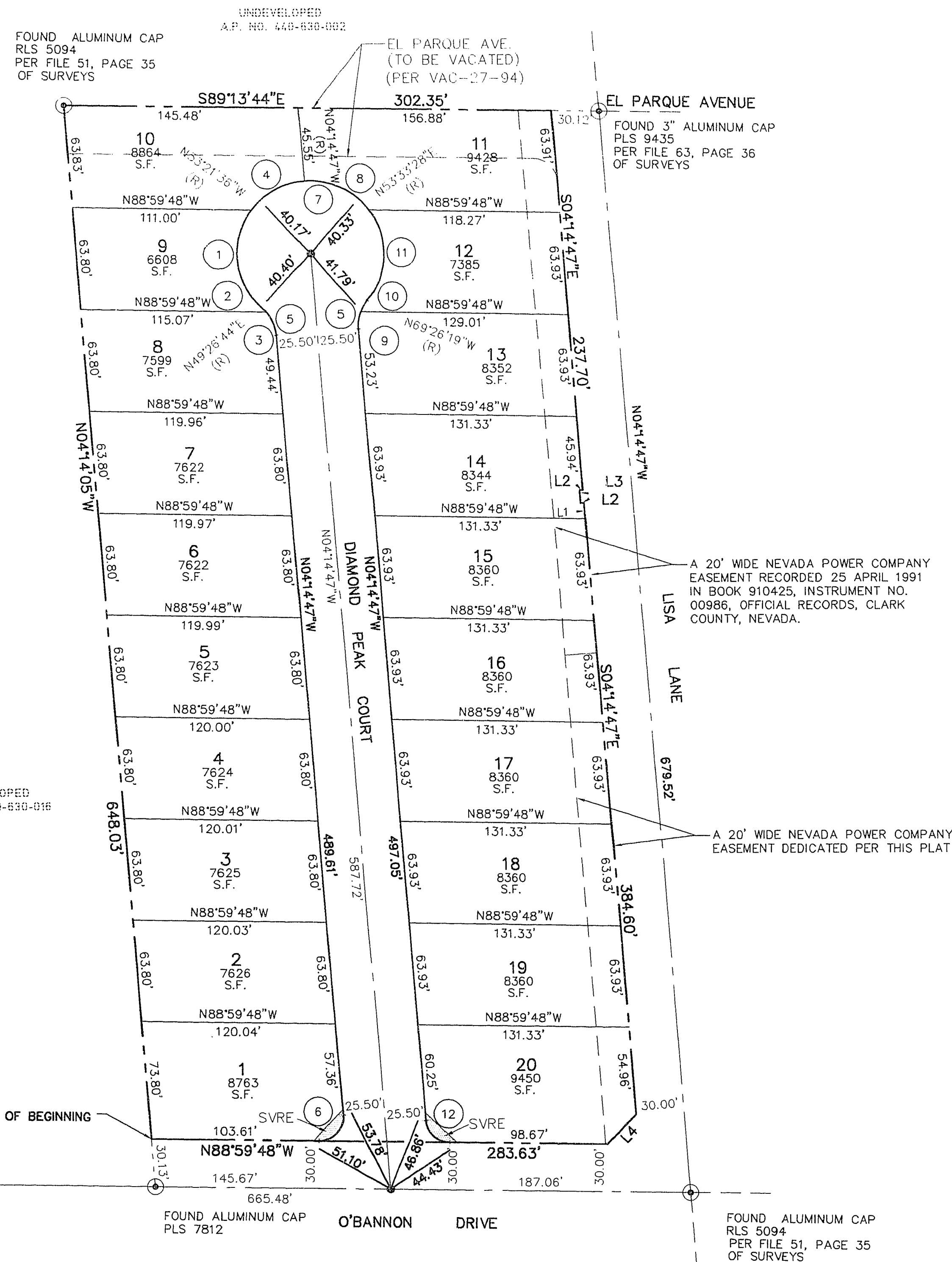
4/2/95
FREDERICK W. ORBAN
PROFESSIONAL LAND SURVEYOR
NEVADA CERTIFICATE NO. 4541

LINE	BEARING	DISTANCE
L1	N04°14'47"W	9.99'
L2	N85°45'13"E	2.00'
L3	S04°14'47"E	8.00'
L4	S43°22'42"W	25.57'

CURVE	DELTA	RADIUS	LENGTH	TANGENT
1	85°08'08"	45.50'	67.61'	41.79'
2	07°56'28"	25.00'	3.46'	1.74'
3	36°18'29"	25.00'	15.84'	8.20'
4	49°06'49"	45.50'	39.00'	20.79'
5	44°14'57"	25.00'	19.31'	10.16'
6	95°14'59"	15.00'	24.94'	16.44'
7	268°29'54"	45.50'	213.22'	---
8	57°48'15"	45.50'	45.90'	25.12'
9	24°48'28"	25.00'	10.82'	5.50'
10	19°26'29"	25.00'	8.48'	4.28'
11	76°26'42"	45.50'	60.71'	35.83'
12	84°45'01"	15.00'	22.19'	13.68'



SURVEY ANALYSIS
NO SCALE



12-6-94