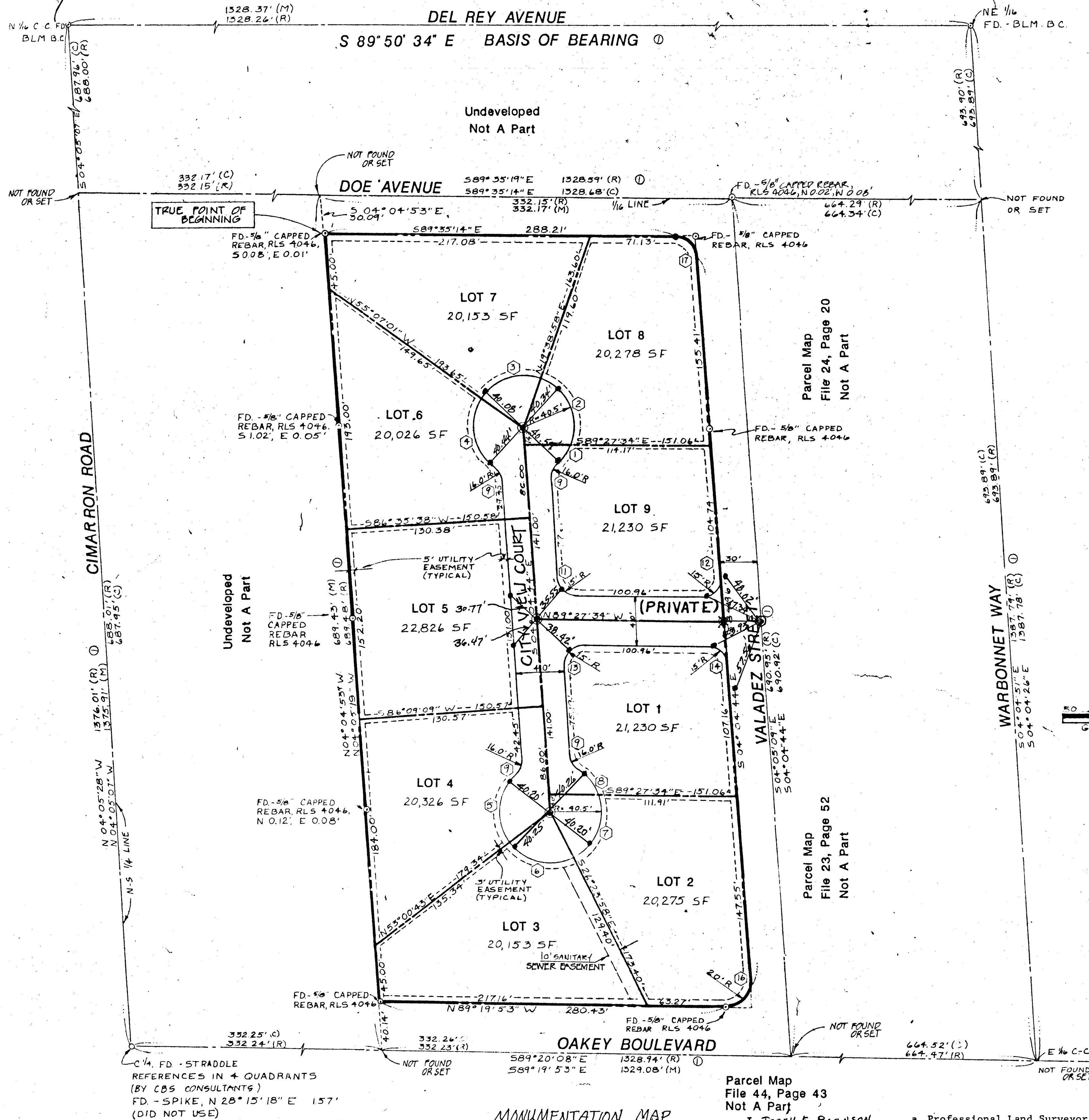


BOOK 891016

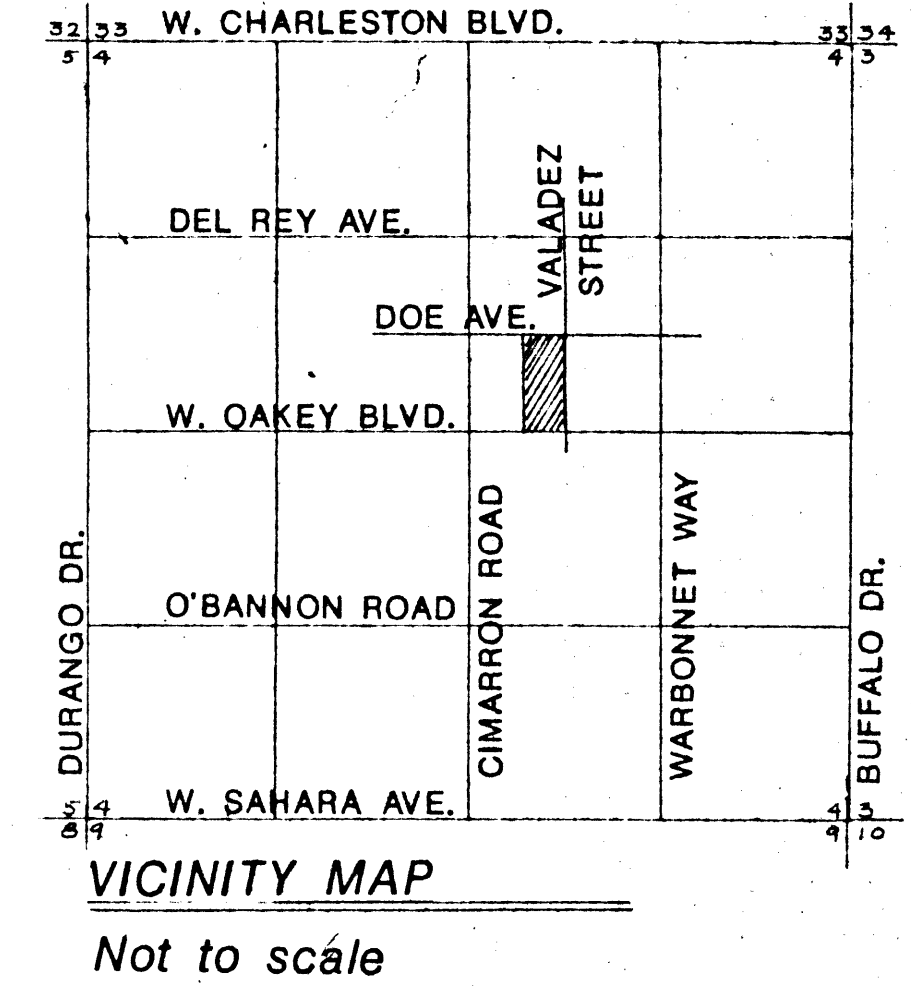
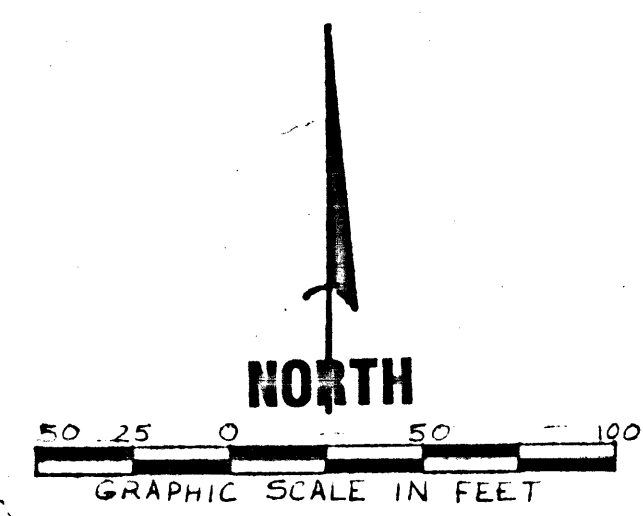
00763



BASIS OF BEARINGS
The E-W 1/16 line of the NE 1/4 of Section 4, Township 21 South, Range 60 East, Mount Diablo Meridian, bearing S 89° 50' 34" E from BLM monument in place and as noted on document used as reference below.

REFERENCE
① Parcel Map recorded BK 880618-00766, File 049 Page 0093, Clark County, NV

	Δ	R	T	L
①	25°38'37"	40.5'	9.22	18.13'
②	91°02'45"	40.5'	41.25	64.36
③	74°45'59"	40.5'	30.95	52.85
④	89°23'15"	40.5'	40.07	63.18
⑤	83°19'37"	40.5'	36.04	58.90
⑥	79°24'21"	40.5'	33.63	56.13'
⑦	83°12'52"	40.5'	35.97	58.82
⑧	34°53'26"	40.5'	12.73	24.66
⑨	42°15'08"	16.00'	6.18	11.80'
⑩	NOT USED			
⑪	85°22'46"	15.00'	13.84	22.36
⑫	94°37'10"	15.00'	16.26	24.77'
⑬	94°37'14"	15.00'	16.26	22.36
⑭	85°22'50"	15.00'	13.84	22.35
⑮	NOT USED			
⑯	94°44'51"	20.00'	21.73	33.07'
⑰	85°30'30"	15.00'	13.87	22.39'



- LEGEND**
- (M) MEASURED DISTANCE
 - (R) RECORDED DISTANCE, FROM PARCEL MAP AT FILE 49, PAGE 98, 6/18/86
 - (⊕) CURVE DESIGNATION
 - (○) MONUMENT FOUND, AS NOTED
 - (C) COMPUTED DISTANCE
 - FND. Type III Mon. RLS 8431
 - Set Brass cap ties in Top Curb PLS 4046

- NOTES:**
- (1.) DIRECT VEHICULAR ACCESS TO OAKLEY BLVD FROM THE ABUTTING LOTS IS PROHIBITED.
 - (2.) BUILDING SET BACKS AS NOTED: 50' FRONT, 40' SIDE
 - (3.) TOTAL # OF LOTS - 9

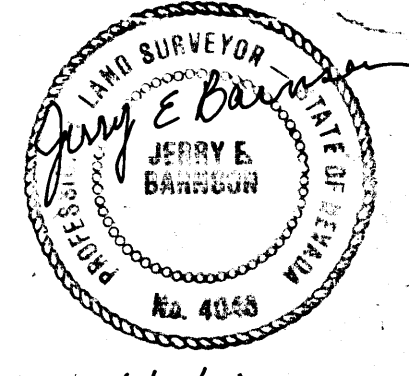
**MONUMENTATION MAP
FINAL MAP of:**

D.P. ESTATES

A RE-SUBDIVISION OF PARCEL MAP-25-86,
FILE NO. 49, PAGE NO. 98, SECTION 4,
TOWNSHIP 21 SOUTH, RANGE 60 EAST,
MOUNT DIABLO BASE AND MERIDIAN,
CLARK COUNTY, NEVADA.

Parcel Map File 44, Page 43 Not A Part
I, JERRY E. BARNSON, a Professional Land Surveyor in the State of Nevada, do hereby certify that the monuments have been set and the tie distances established as shown hereon. This survey was completed on 10/28/91.

Jerry E. Barnson
Nevada Cert. # 4046



DRAWN BY: JOB NO. 7073.1
B. ROGERS SHEET 7

Scale 1" = 50'

MONUMENTATION MAP
FINAL MAP

Church Engineering, Inc.
2011 West 10th Ave
Las Vegas, NV 89102
702.579.5222

D.P. ESTATES