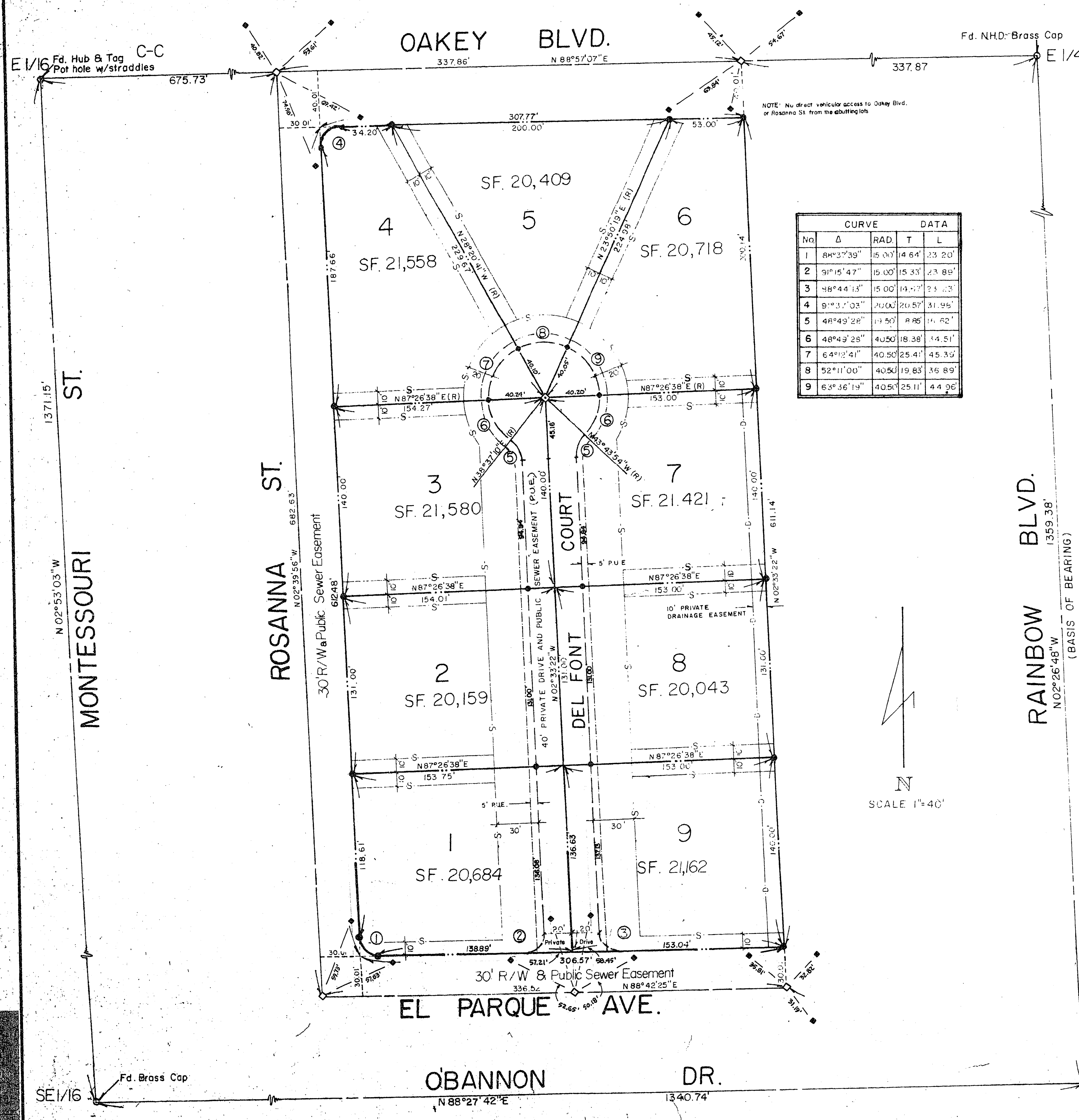


BOOK 900213

DEL SOL ESTATES

A PORTION OF THE NE 1/4, SE 1/4, SECTION 3, T21S, R60E, MDM
CITY OF LAS VEGAS
CLARK COUNTY, NEVADA

00143

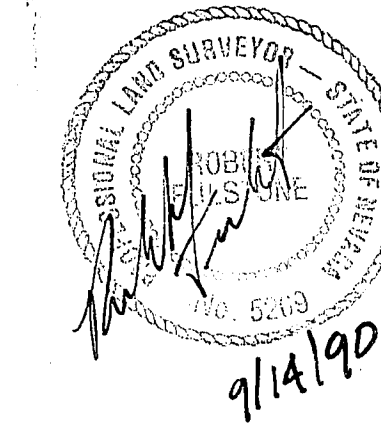


CURVE		DATA	
No	Δ	RAD	T L
1	84°37'39"	15.00'	14.64' 33.20'
2	91°15'47"	15.00'	15.33' 23.89'
3	48°44'13"	15.00'	14.77' 23.23'
4	91°37'03"	20.00'	20.57' 31.95'
5	48°49'28"	14.50'	14.85' 14.62'
6	48°49'28"	40.50'	18.38' 14.51'
7	64°12'41"	40.50'	25.41' 45.35'
8	52°11'00"	40.50'	19.83' 36.89'
9	63°36'19"	40.50'	25.11' 44.96'

SURVEYOR'S CERTIFICATE

I, ROBERT FULSTONE, A PROFESSIONAL LAND SURVEYOR, DO HEREBY CERTIFY THAT THE MONUMENTS HAVE BEEN SET AND THE TIES ESTABLISHED AS SHOWN HEREON.

Robert Fulstone
ROBERT FULSTONE
PLS 5269



MONUMENT LEGEND

- ◊ = SET REBAR AND ALUM. CAP PLS 5269
- ◊ = SET BRASS CAP PLS 5269 IN ACP
- ◆ = SET BRASS CAP MARKED WITH "RM" AND DISTANCE INDICATED.

LEGEND

- As Shown
 - Set Chisel "X" on back curb
 - — — — — PROPERTY LINE
 - - - - - 10' PRIVATE DRAINAGE EASEMENT
 - - - - - 5' PUBLIC UTILITY EASEMENT (P.U.E.)
 - - - - - PRIVATE DRIVE & P.U.E.
 - - - - - Front & Side Yard Building Setbacks
- Note: Total of 9 Lots

MONUMENTATION MAP

DEL SOL ESTATES, BNG. PTN. NE 1/4 SE 1/4 SECTION 3, T21S, R60E, M.D.B. & M., CLARK COUNTY, NEVADA	DWN. BY: GB
FOR: MIKE DELFANTE, ETAL	CHK'D. BY:
FULSTONE ENTERPRISES BY: 940 SOUTH MARTIN LUTHER KING BLVD. LAS VEGAS, NEVADA 89106 PHONE: (702) 382-8141 FAX: (702) 382-3103	SCALE: 1" = 40'
	DATE: 9/10/90
	JOB NO. FBI-1025
	DWG. NO. 33-23

9-6-134 SHEET 2 OF 2
052-1063 300K 045 PAGE 0012