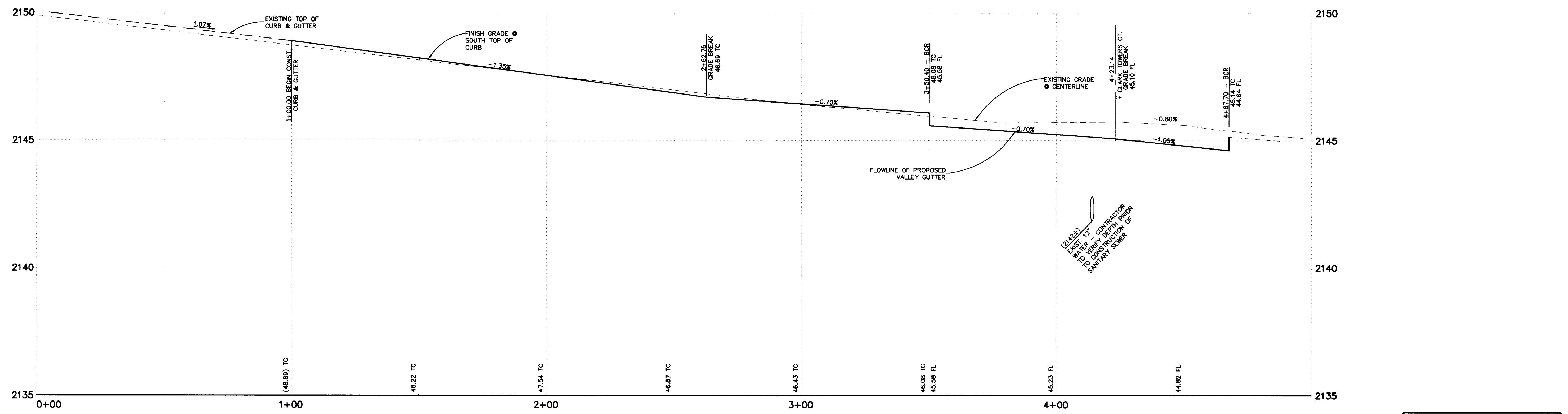
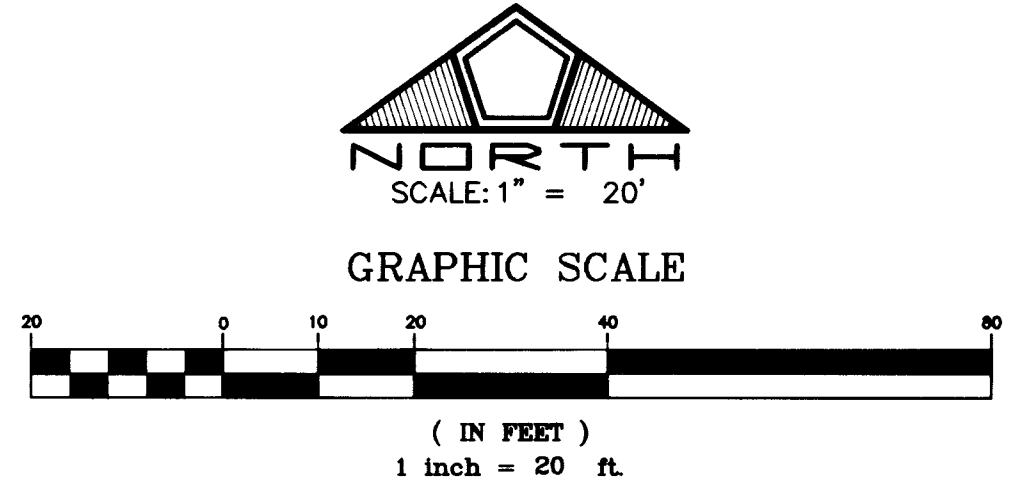
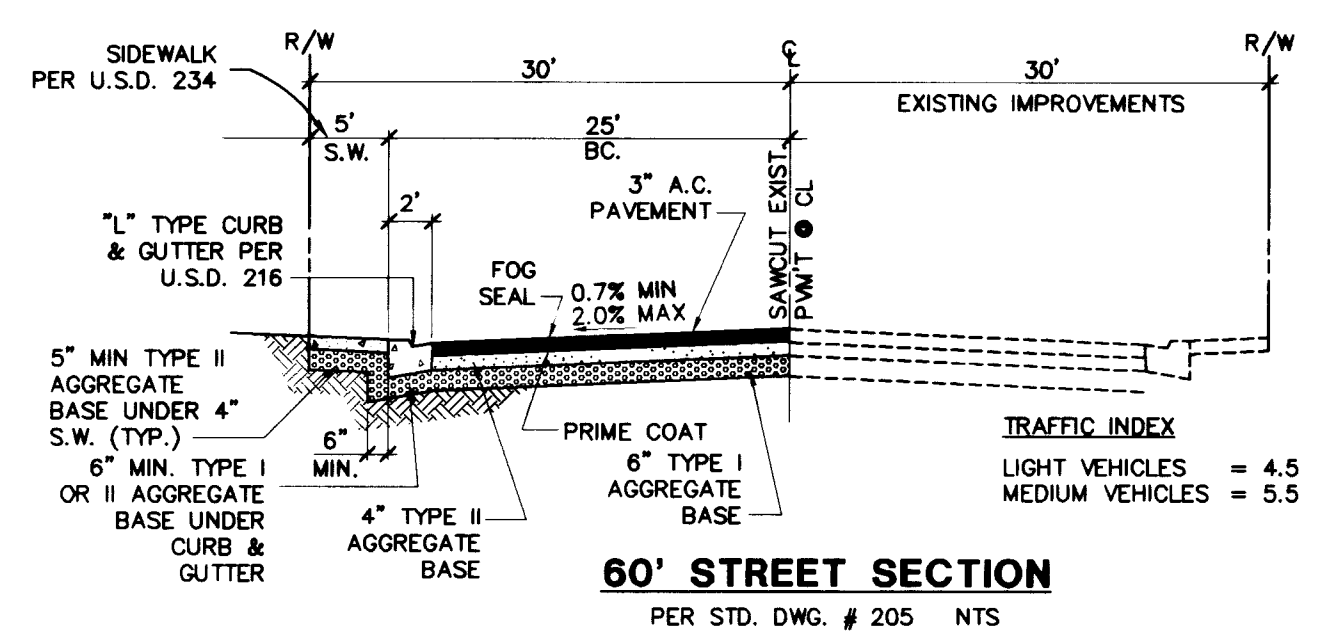


**EL CONLON AVENUE  
PUBLIC STREET**

**CLARK TOWERS COURT  
(PRIVATE STREET)  
SEE SHEET 9**



**EL CONLON AVENUE  
(PUBLIC STREET)  
PROFILE**  
SCALE: HORIZ. 1" = 20'  
VERT. 1" = 2'

**BASIS OF BEARING**  
S 01°49'36" E, BEING THE BEARING OF THE WEST LINE OF THE NORTHWEST QUARTER (NW 1/4) OF SECTION 8, TOWNSHIP 21 SOUTH, RANGE 61 EAST, M.D.M., CITY OF LAS VEGAS, CLARK COUNTY, NEVADA, AS DESCRIBED IN A DEED ON FILE AT THE CLARK COUNTY RECORDER'S OFFICE IN BOOK 745, INST. 704377, RECORDED MAY 31, 1977.

**BENCHMARK**  
CITY OF LAS VEGAS BENCHMARK NO. 7C1155WS  
RIVET & PLATE IN TOP OF CURB, NE RETURN VALLEY VIEW BLVD AND SAHARA AVE.  
ELEVATION=657.6375 METERS (NAV88) - DATUM USED  
ELEVATION=2157.599 FEET (NAV88) - DATUM USED

**ARCHITECT:**  
**arketset**  
2162 Winifred Street  
Simi Valley, Ca. 93063  
(805) 522 3161  
FAX (805) 522 3162

**Call before you Dig**  
1-800-227-2600  
UNDERGROUND SERVICE (USA)

**Call before you OVERHEAD**  
1-702-593-6111  
NEVADA POWER EQUIPMENT AND SERVICE DEPARTMENT

EXISTING UTILITY LOCATIONS SHOWN HEREIN ARE APPROXIMATE ONLY. IT SHALL BE THE CONTRACTOR'S RESPONSIBILITY TO DETERMINE THE EXACT VERTICAL AND HORIZONTAL LOCATION OF ALL EXISTING UNDERGROUND UTILITIES PRIOR TO COMMENCING CONSTRUCTION. NO REPRESENTATION IS MADE THAT ALL EXISTING UTILITIES ARE SHOWN HEREON. THE ENGINEER ASSUMES NO RESPONSIBILITY FOR UTILITIES NOT SHOWN OR UTILITIES NOT SHOWN IN THEIR PROPER LOCATION. CALL BEFORE YOU DIG: 1-800-227-2600.

NO.	DESCRIPTION	DATE	APP'D

**EL CONLON ASSOC., LLC**  
4340 SOUTH VALLEY VIEW BLVD.  
LAS VEGAS, NEVADA, 89103  
(702) 871-8280

**PENTACORE**  
CIVIL ENGINEERING AND SURVEYING PLANNING  
CONSTRUCTION MANAGEMENT • ADV. CONSULTING  
6765 WEST CHARLESTON BOULEVARD  
LAS VEGAS, NEVADA 89105 (702) 556-0115

**EL CONLON AVENUE  
PLAN & PROFILE**

**EL CONLON APARTMENTS**

DATE:	AUGUST 98	D.P.W.	NONE
DRAWN BY:		CHECKED BY:	
DESIGNED BY:		ADA CHECKED:	
JOB NO.:	0050.0226	SCALE:	NONE

**PROFESSIONAL ENGINEER**  
DENNIS P. VERZLER  
CIVIL  
11970  
8-21-98

SHEET **8** OF 11  
C.L.V. DWG.#

d:\0050\0226\001\01-PP.dwg Fcn, Aug 21, 13:37:51, 1998 Lummie M

