

LAS VEGAS VALLEY WATER DISTRICT STANDARD NOTES

- No work shall begin until the water plans have been released for construction by the LVVWD. Following water plan approval, 48 hour notice shall be given to the LVVWD Communication Support Center (258-7171) prior to the start of construction. Notice must be given by 2:00 p.m. the business day prior to a LVVWD inspection.
- All work shall conform to the LVVWD's Standard Plans, Drawings, and Specifications and the Uniform Design and Construction Standards for Water Distribution Systems (UDACS), latest edition.
- All work, except as modified by these plans or by Note 2, shall be done in accordance with the most current draft or edition of the Uniform Standard Specifications for Public Works Construction Official Improvement, Clark County Area.
- A single pipe material shall be used throughout the project unless otherwise approved by the LVVWD.
- All service laterals two (2) inches in diameter and smaller shall be copper tubing with LVVWD approved service saddles.
- All water meter boxes shall be located outside of driveway areas.
- All valves shall be located outside of driveways, valley and curb gutters.
- The following requirements must be met in the event a water line and sanitary or storm sewer line cross:
 - A minimum eighteen (18) inch vertical separation (outside to outside) must be maintained when the water line is installed over the sanitary or storm sewer line. If the vertical separation cannot be maintained or the water line must be placed under the sanitary or storm sewer line, the sanitary or storm sewer line must be constructed with one of the following or, as shown on these plans:
 - Potable Water supply quality material.
 - Encasement, with four (4) inch concrete (minimum) sleeve with potable water supply quality pipe.
 - Each provision must extend along the sanitary or storm sewer, on either side of the main, a minimum 10 foot distance perpendicular to the water main exterior.
- Warning tape shall be required over all mains, all six (6) inch diameter and larger service laterals, and any service lateral not installed perpendicular to the main in accordance with Standard Plate No. 27.
- All water facilities shall be filled, disinfected, pressure tested, flushed, and an acceptable water sample obtained, prior to connection to the LVVWD's distribution system.
- The contractor must obtain all meters two (2) inches and smaller from LVVWD Central Stores. Telephone 258-3152 forty-eight (48) hours prior to pickup.
- Construction may interrupt service, with LVVWD approval and proper notification, between the hours of 10 PM and 6 AM, Sunday through Thursday. Circumstances may require temporary service feeds to be installed, without LVVWD reimbursement. Any temporary service feed must have prior LVVWD approval.
- All water facility construction materials used must be as listed on the LVVWD's Pre-Approved Materials and Manufacturers Listing for New Facilities, latest revision, or specifically approved on these plans.

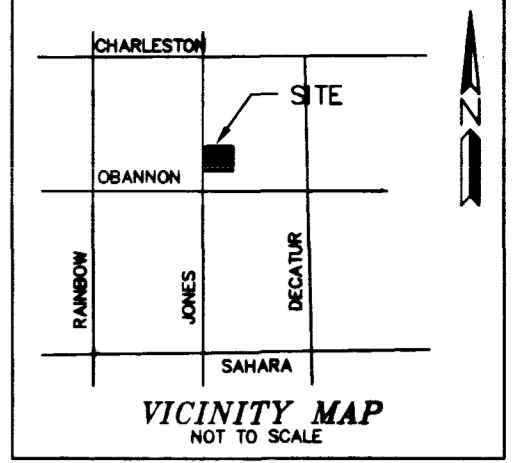
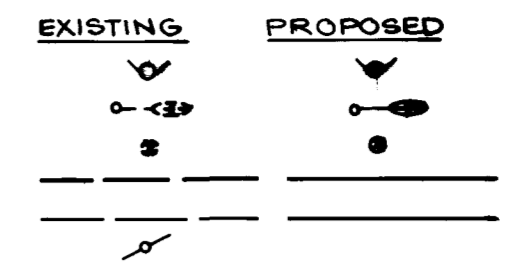
* I.B.E.W. PLUS CREDIT UNION PROJECT BY KIMBERLEY-HORN AND ASSOCIATES, INC. LAS VEGAS, NV 89110

REDUCED PRESSURE PRINCIPLE ASSEMBLY 1-1/2"
Approved Reduced Pressure Assembly(s) shall be installed per the District's Standard Plate No. 14. No water shall be taken from a service requiring backflow prevention until the reduced pressure principle assembly has been successfully tested by the LVVWD.

INSTALLATION OF DOUBLE CHECK DETECTOR ASSEMBLY 1-8"
The double check detector assemblies shall be installed in accordance with the UDACS plat 208.
Any block wall or other fence material shall be designed and constructed around the outside of easement(s), so as to allow the District direct access from the adjacent right-of-way.

LEGEND AND ABBREVIATIONS

- FIRE HYDRANT
- STREET LIGHT
- WATER VALVE
- WATER OR SEWER LINE
- STREET LIGHT CONDUIT
- POWER POLE
- INVERT
- SEWER MANHOLE
- TOP OF MANHOLE
- STREET LIGHT
- TELEPHONE
- GAS
- WATER
- SEWER
- STUB OUT



SAFETY ALERT
Call Before You Overhead
1-702-593-6111

Avoid cutting underground utility lines. It's costly.
Call before you Dig
1-800-227-2600

WATER QUANTITIES

DESCRIPTION	QUANTITY
8" PVC CLISO WATER LINE	50 LF
8" TAPPING TEE W/ 1/2" M.J. TAPPING VALVE	1 EA
UDACS PLATE NO. 22	1 EA
1/2" SERVICE INSTALLATION W/METER	1 EA
UDACS PLATE NO. 1 D	1 EA
1/2" SERVICE SADDLE	1 EA

PRIVATE

8" PVC WATER LINE	315 LF
8" PVC WATER LINE	50 LF
2" PVC WATER LINE	269 LF
3" X 6" REDUCER	3 EA
6" X 8" TEE	1 EA
2" ELBOW	1 EA
6" ELBOW	1 EA
8" GATE VALVE	1 EA
FIRE HYDRANT INSTALLATION	1 EA
UDACS PLATE NO. 7	1 EA
8" 90° ELBOW	1 EA
2" X 1/2" REDUCER	1 EA
8" DCDA, UDACS PLATE NO. 20B	1 EA
10" X 20" EASEMENT TO L.V.V.W.D.	1 EA
1/2" R.P.P.A., UDACS PLATE NO. 11A	1 EA
8" 45° ELBOW	1 EA

SEWER QUANTITIES

PRIVATE	QUANTITY
4" PVC SEWER LINE	82 LF
4" CLEANOUT	1 EA

SEWAGE FLOW

24 FIXTURE UNITS X 0.45 ERU'S / FIXTURE X 250 GPD / ERU = 2700 GPD

SEWER CONTRIBUTION

AVERAGE DAILY FLOW	1250 GPD
DAILY PEAK FLOW	3,125 GPD

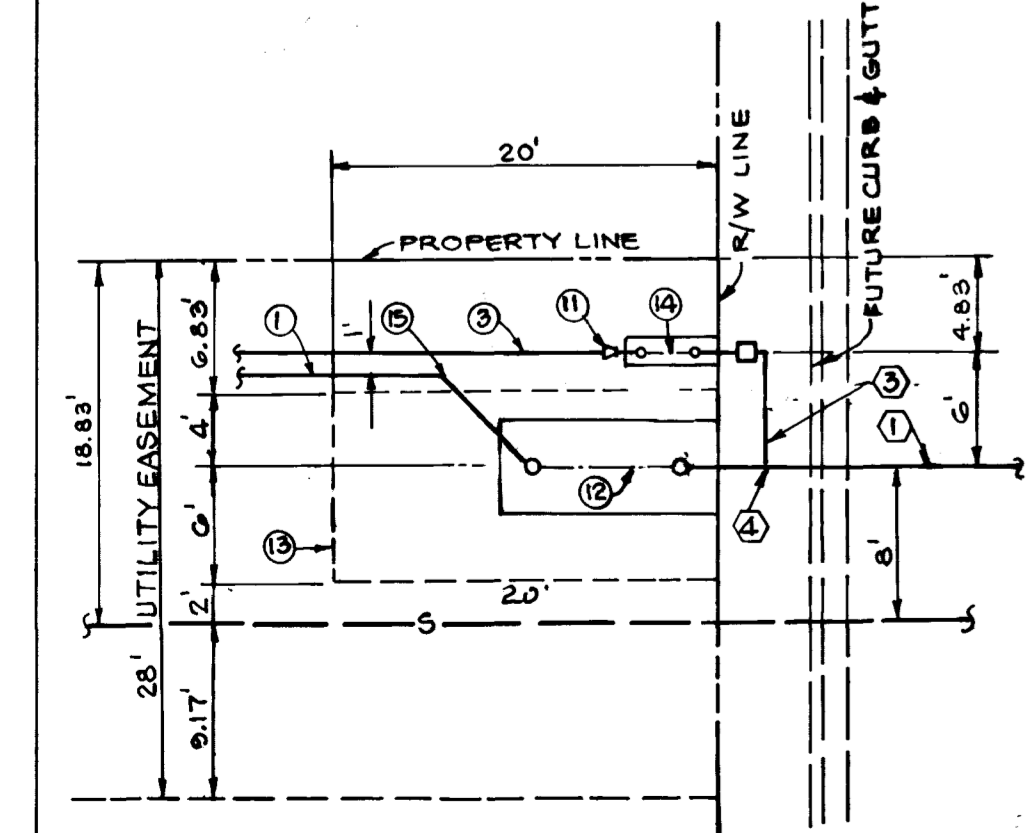
FIRE FLOW CALCULATION

FIRE FLOW REQUIREMENT IS	1500 GALLONS PER MINUTE AT 20 PSI RESIDUAL
BASED ON:	
SQUARE FOOTAGE	12,500
BUILDING HEIGHT	2 STORY
TYPE OF CONSTRUCTION	V-N
OCCUPANCY	OFFICE COMPLEX
SPRINKLER SYSTEM	YES

APPROVAL
Amey Chang 6/24/98
CITY FIRE MARSHAL DATE:

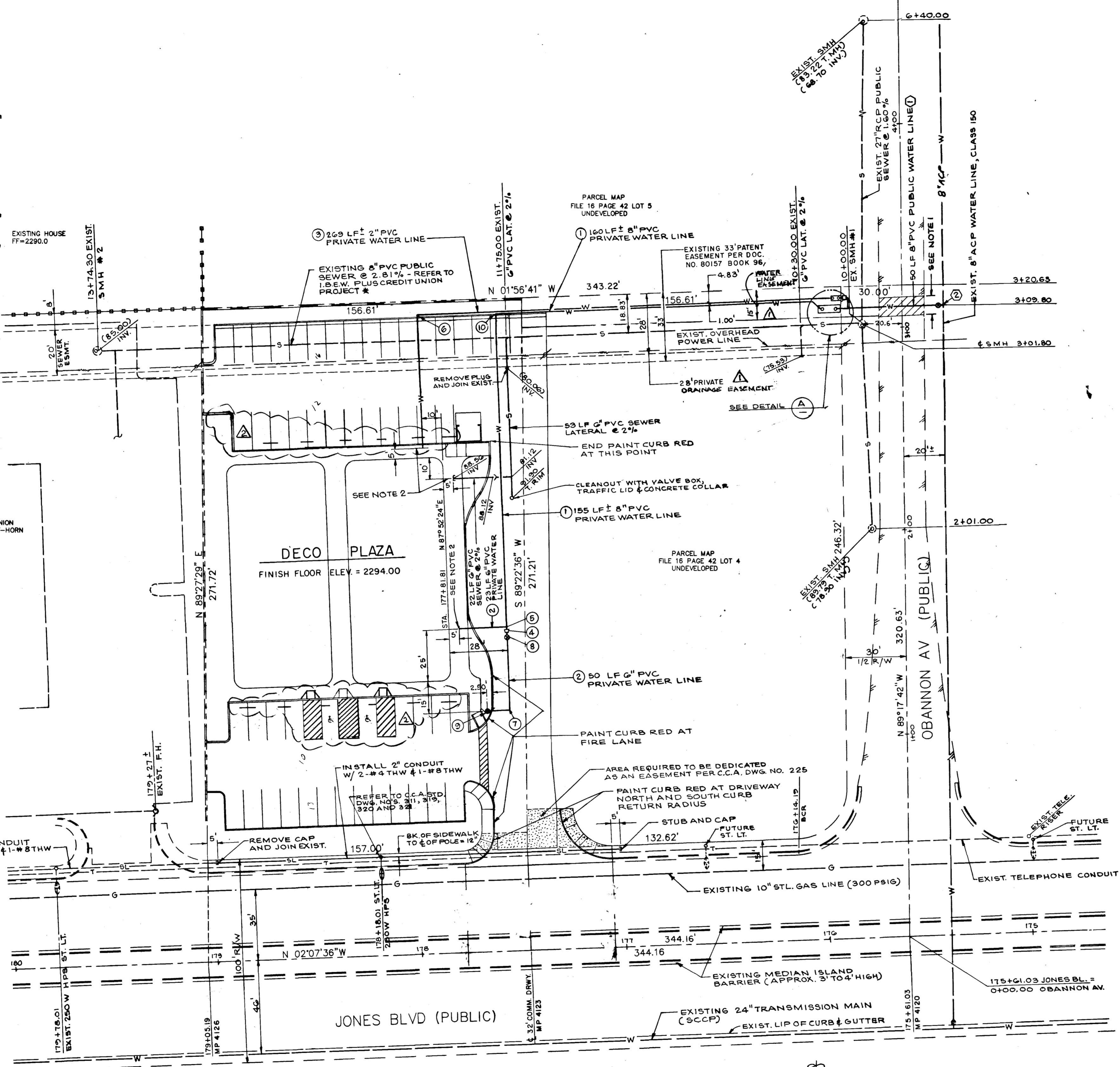
- NOTES**
- FOR WATER LINE TRENCHING AND REPAVING REQUIREMENTS, REFER TO C.C.A. UNIFORM STD. DWG. NO. 503 AND UDACS PLATE NO. 28. REMOVED EXISTING PAVING AND RECONSTRUCT CROSS HATCH AREA AS FOLLOWS: 10 FT. MIN. WIDTH MACHINE LAID PAVEMENT REPLACEMENT, FOG SEAL OVER 3" A.C. OVER PRIME COAT OVER 4" TYPE II AGGREGATE BASE OVER 6" TYPE I AGGREGATE BASE COMPACTION REQUIREMENTS APPLICABLE.
 - 8" PVC SEWER STUB AND CAPPED. SEE PLUMBING OR MECHANICAL DRAWINGS FOR SEWER AND WATER LINES CONTINUATION.

PROJECT NAME: **DECO PLAZA**
P.C. - 2 of 5
This project water plan complies with the Las Vegas Valley Water District's technical requirements. However, this water plan is **NOT APPROVED FOR CONSTRUCTION** at this time and this signature does not provide or imply a water commitment.
David S. ... 6-18-98
LVVWD DATE

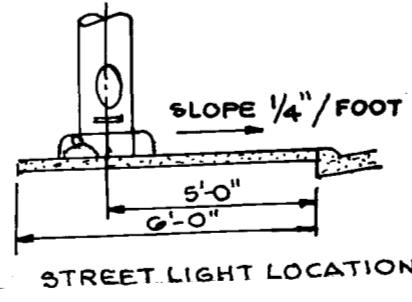


DETAIL A
N.T.S.

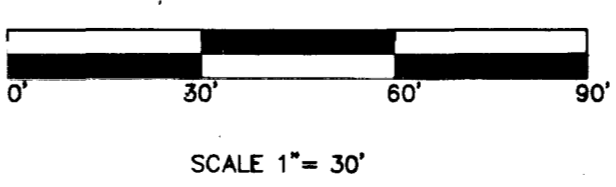
10801 10886 11389 11678



NOTE
JONES BLVD IS A NEVADA DEPARTMENT OF TRANSPORTATION MAINTAINED ROAD FROM CURB TO BACK OF CURB. THE CITY OF LAS VEGAS DOES NOT REVIEW THESE PLANS FOR CONFORMANCE WITH NDOT STANDARDS. A SEPARATE REVIEW, APPROVAL AND ENCROACHMENT PERMIT MUST BE OBTAINED FROM NDOT PRIOR TO CONSTRUCTION.
PERMIT MUST BE PULL FROM C.I.V. FOR STREET LIGHT WORK

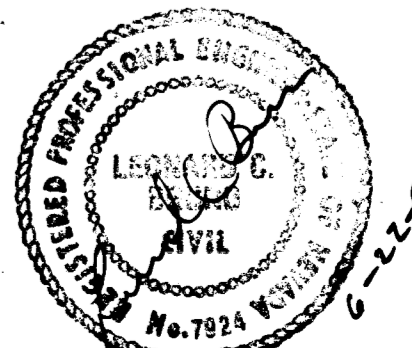


STREET LIGHT NOTE:
ALL HAND HOLE COVERS MUST BE INSTALLED, POLE CAPS POURED AND PULL BOX LIDS BOLTED DOWN PRIOR TO ENERGIZING CIRCUIT, ALL WIRE MUST HAVE THW INSTALLATION



SCALE 1" = 30'

APPROVAL
[Signature] 11/25/98
LAS VEGAS VALLEY WATER DISTRICT DATE



Drawn by: LB
Checked by: LB
Date: 6/24/98
Scale: 1" = 30'

UTILITY PLAN
MICHAEL THURSTON
DECO PLAZA

LB Engineering
LEONARD BRUNO
940 S. MARTIN L. KING
LAS VEGAS, NV 89106
(702) 382-7559

REV	BY	DATE	DESCRIPTION
1	LB	11/10/98	INSTALL HANDICAP RAMP
2	LB	12/04/98	PRIVATE DRAINAGE EASEMENT

DRAWING NO. 107V-2876
SHEET C3 OF 3 OF 3
107-12876
03-19

