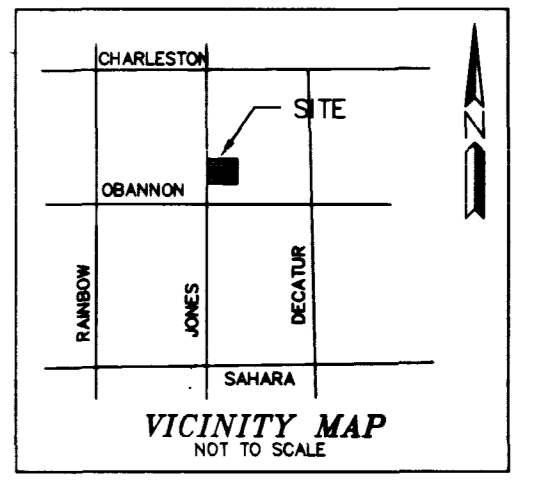




LEGAL DESCRIPTION

BEING LOT 3 OF PARCEL MAPS F16, P42, PORTION OF THE SW 1/4, OF THE NW 1/4, OF THE SW 1/4 OF THE SW 1/4, OF SEC 1, T21S, R60E, MDM, CLARK COUNTY NEVADA. APN 163-01-304-003



BENCHMARK

BASIS OF BEARING CCBM #7C1015W6 BEING A RIVET AND SQUARE ALUMINUM PLATE IN TOP OF CURB; NE CORNER OF JONES BLVD AND OBANNON DR. NEAR THE PC OF JONES BLVD. ELEVATION 698.377 (2291.26) NAVD 88

BASIS OF BEARING

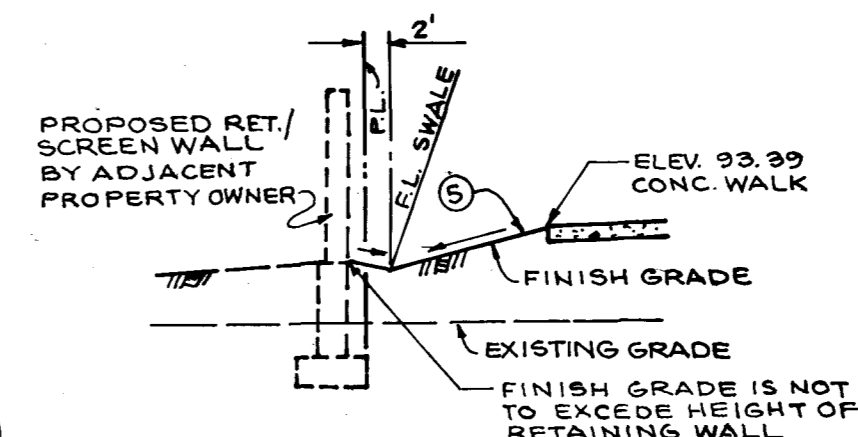
N 02°07'36" W BEING THE WEST LINE OF THE SOUTHWEST QUARTER OF SECTION 1, T21S, R60E, MDM, CLARK COUNTY, NEVADA. PER RECORD OF SURVEY F54, P39, CLARK COUNTY RECORDERS OFFICE, CLARK COUNTY, NEVADA. ALSO KNOWN AS CENTERLINE JONES BLVD.

LEGEND AND ABBREVIATIONS

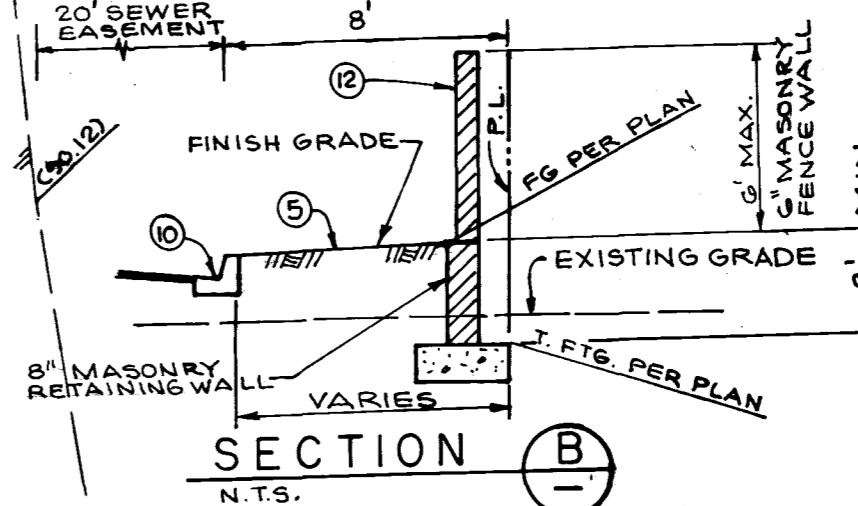
- EG EDGE OF GRAVEL ROAD
- EP EDGE OF PAVEMENT
- EXIST EXISTING
- FG FINISH GRADE
- FF FINISH FLOOR
- FL FLOW LINE
- DIRECTION OF FLOW
- EXIST CONTOURS
- PROPOSED CONTOURS
- EXISTING GRADE
- GRADE BREAK
- SET BACK LINE
- PROPOSED GRADE
- TOP OF CURB
- TOP OF SIDEWALK
- RADIUS

DEVIATIONS FROM STANDARDS

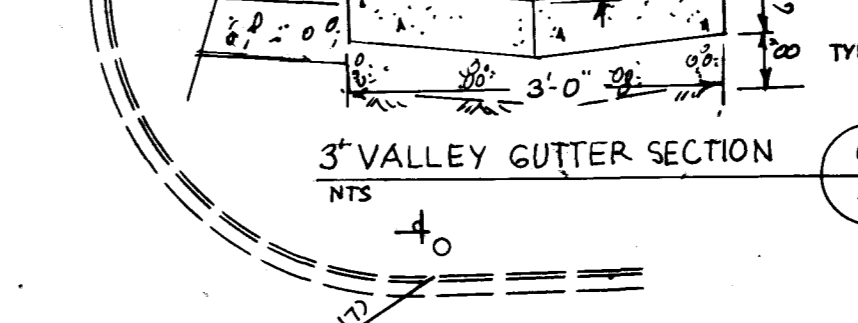
NONE



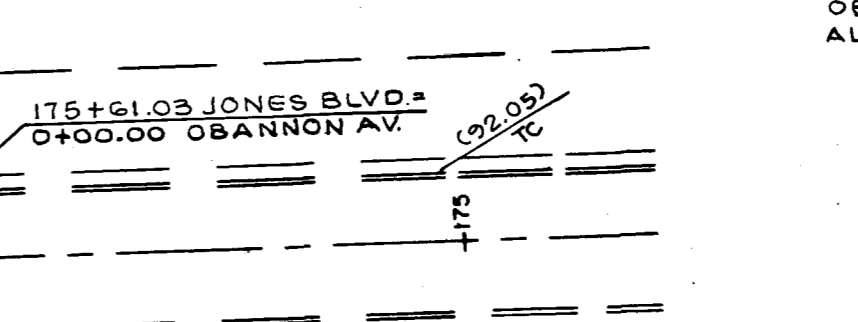
SECTION A N.T.S.



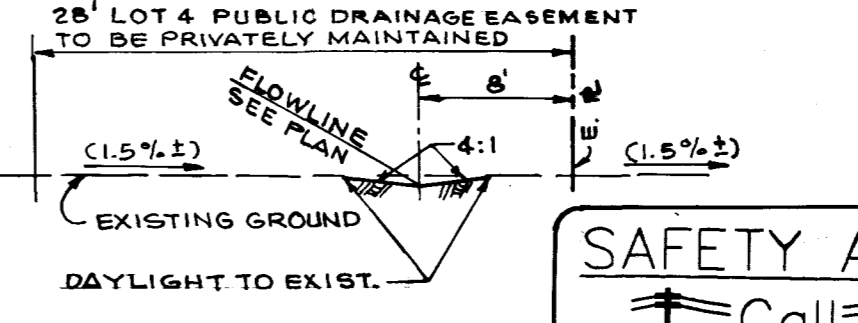
SECTION B N.T.S.



SECTION C N.T.S.



SECTION D N.T.S.



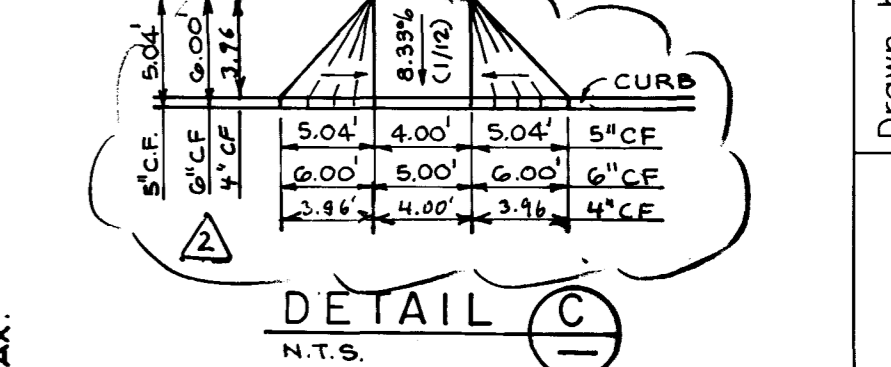
SECTION E N.T.S.

NDOT NOTE

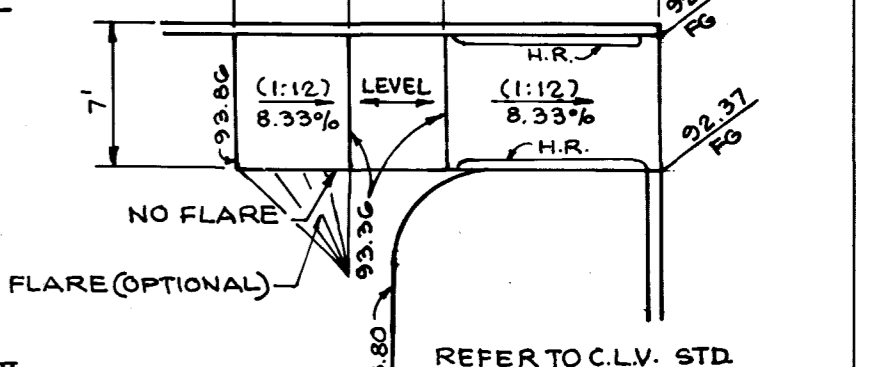
JONES BLVD. IS A NEVADA DEPARTMENT OF TRANSPORTATION MAINTAINED ROAD FROM BACK OF CURB. THE CITY OF LAS VEGAS DOES NOT REVIEW THESE PLANS FOR CONFORMANCE WITH NDOT STANDARDS. A SEPARATE REVIEW APPROVAL AND ENCROACHMENT PERMIT MUST BE OBTAINED FROM NDOT PRIOR TO CONSTRUCTION.

CONSTRUCTION NOTES

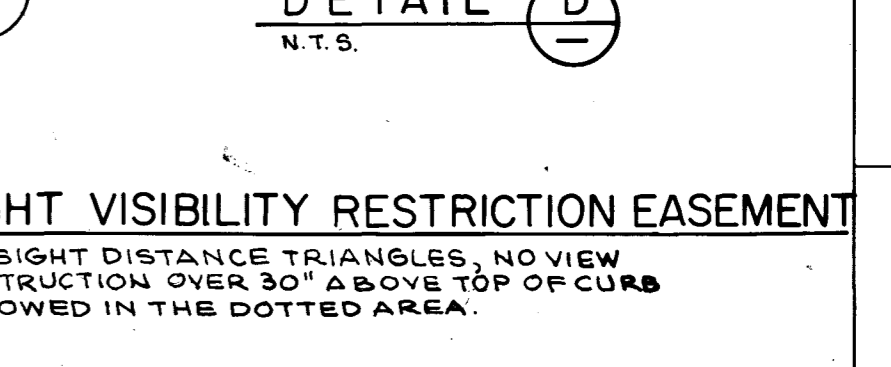
- 1' SIDEWALK, C.C.A. STD. DWG. NO. 234
- 2' CROSS GUTTER, C.C.A. STD. DWG. NO. 228
- 3' CURB RAMP, N.D.O.T. STD. DWG. NO. R5.1.1.2 (613) TYPE D. SEE BACK OF CURB DATA FOR A & B
- 4" "A" TYPE CURB, C.C.A. STD. DWG. NO. 219
- LANDSCAPE AREA MINIMUM ELEVATION SHOWN
- PARKING STRIPING PER ARCH. DWG. DETAILS
- HANDICAP STRIPING PER ARCH. DWG. DETAILS
- TRASH ENCLOSURE PER ARCH. DWG. DETAILS
- 3" CURB FACE, SEE ARCH. DWG. FOR DETAILS
- "L" TYPE CURB, C.C.A. STD. DWG. NO. 216
- 2" MIN. A.C. PAVEMENT, AGGREGATE BASE AND BACKFILL PER SOIL REPORT.
- STANDARD RETAINING WALL AND 6" HIGH MASONRY FENCE WALL PER C.L.V. STD. DWG. CLV-102, RET. WALL H = 4'-0" MAX.
- SIDEWALK RAMP, C.C.A. STD. DWG. NO. 235, CASE 1, A & B - 8'
- INSTALL CLV SURVEY MONUMENT PER C.C.A. STD. DWG. NO. 239
- BUS PASSENGER LOADING AND SHELTER PAD, PER UNIFORM STD. DWG. NO. 234.2 (8'W X 25'L)



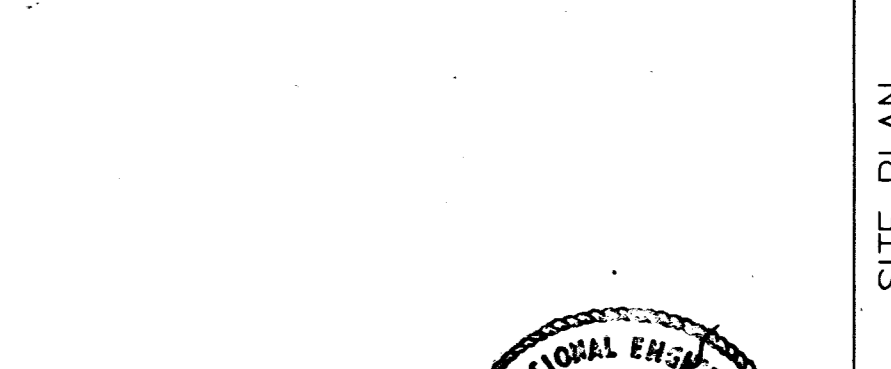
DETAIL A N.T.S.



DETAIL B N.T.S.



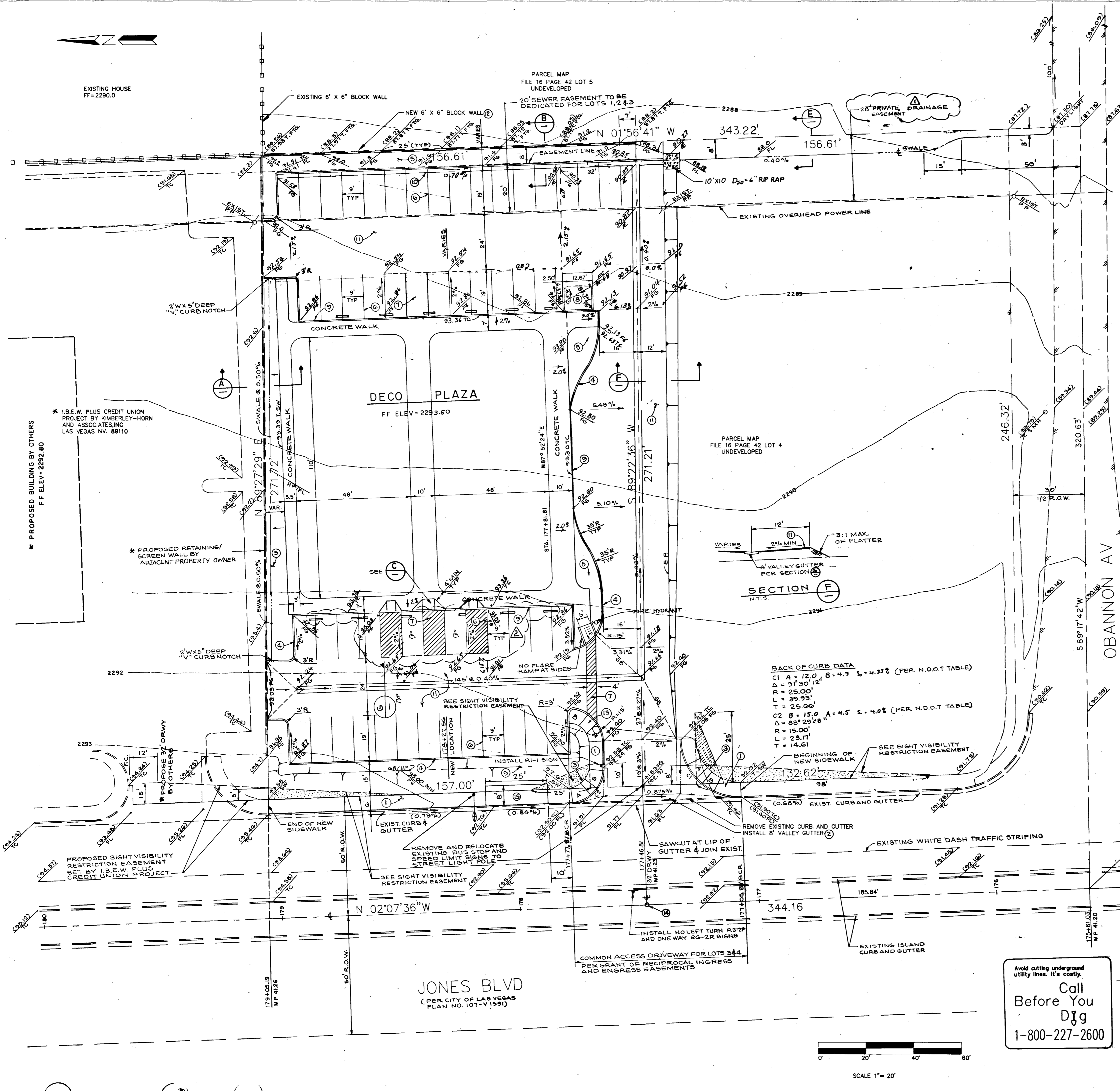
DETAIL C N.T.S.



DETAIL D N.T.S.

SIGHT VISIBILITY RESTRICTION EASEMENT

ON SIGHT DISTANCE TRIANGLES, NO VIEW OBSTRUCTION OVER 30" ABOVE TOP OF CURB ALLOWED IN THE DOTTED AREA.



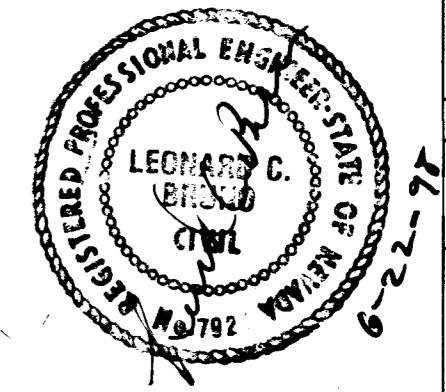
BACK OF CURB DATA

C1 A = 12.0 B = 4.7 S = 4.33% (PER N.D.O.T TABLE)
 Δ = 91°30'12"
 R = 25.00'
 L = 39.93'
 T = 25.06'

C2 B = 15.0 A = 4.5 S = 4.0% (PER N.D.O.T TABLE)
 Δ = 85°29'48"
 R = 15.00'
 L = 23.17'
 T = 14.61'

Call Before You Dig
 1-800-227-2600

SAFETY ALERT
 Call Before You Overhead
 1-702-593-6111



LB Engineering
 LEONARD BRUNTON
 940 S. MARTIN L. KING
 LAS VEGAS NV. 89106
 (702) 382-7559

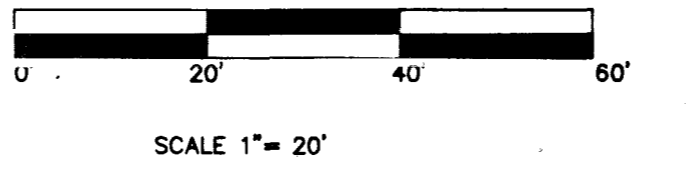
REV	DATE	DESCRIPTION
1	11/10/16	RELOCATE RAINWATER DRAINAGE
2	10/12/18	28" PRIVATE DRAINAGE EASEMENT
3		

Drawn by: AB
 Check by: LB
 Date: 11/10/16
 Scale: 1" = 20'

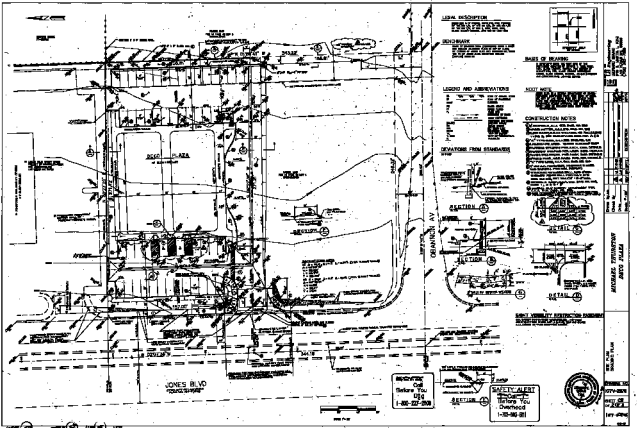
MICHAEL THURSTON
DECO PLAZA

SITE PLAN
 GRADING PLAN

DRAWING NO. 107V-2876
 SHEET C2 OF 2 OF 3
 107-V-2876



SCALE 1" = 20'



LEGAL DESCRIPTION

TRACT 10, 11, 12, 13, 14, 15, 16, 17, 18, 19, 20, 21, 22, 23, 24, 25, 26, 27, 28, 29, 30, 31, 32, 33, 34, 35, 36, 37, 38, 39, 40, 41, 42, 43, 44, 45, 46, 47, 48, 49, 50, 51, 52, 53, 54, 55, 56, 57, 58, 59, 60, 61, 62, 63, 64, 65, 66, 67, 68, 69, 70, 71, 72, 73, 74, 75, 76, 77, 78, 79, 80, 81, 82, 83, 84, 85, 86, 87, 88, 89, 90, 91, 92, 93, 94, 95, 96, 97, 98, 99, 100, 101, 102, 103, 104, 105, 106, 107, 108, 109, 110, 111, 112, 113, 114, 115, 116, 117, 118, 119, 120, 121, 122, 123, 124, 125, 126, 127, 128, 129, 130, 131, 132, 133, 134, 135, 136, 137, 138, 139, 140, 141, 142, 143, 144, 145, 146, 147, 148, 149, 150, 151, 152, 153, 154, 155, 156, 157, 158, 159, 160, 161, 162, 163, 164, 165, 166, 167, 168, 169, 170, 171, 172, 173, 174, 175, 176, 177, 178, 179, 180, 181, 182, 183, 184, 185, 186, 187, 188, 189, 190, 191, 192, 193, 194, 195, 196, 197, 198, 199, 200, 201, 202, 203, 204, 205, 206, 207, 208, 209, 210, 211, 212, 213, 214, 215, 216, 217, 218, 219, 220, 221, 222, 223, 224, 225, 226, 227, 228, 229, 230, 231, 232, 233, 234, 235, 236, 237, 238, 239, 240, 241, 242, 243, 244, 245, 246, 247, 248, 249, 250, 251, 252, 253, 254, 255, 256, 257, 258, 259, 260, 261, 262, 263, 264, 265, 266, 267, 268, 269, 270, 271, 272, 273, 274, 275, 276, 277, 278, 279, 280, 281, 282, 283, 284, 285, 286, 287, 288, 289, 290, 291, 292, 293, 294, 295, 296, 297, 298, 299, 300, 301, 302, 303, 304, 305, 306, 307, 308, 309, 310, 311, 312, 313, 314, 315, 316, 317, 318, 319, 320, 321, 322, 323, 324, 325, 326, 327, 328, 329, 330, 331, 332, 333, 334, 335, 336, 337, 338, 339, 340, 341, 342, 343, 344, 345, 346, 347, 348, 349, 350, 351, 352, 353, 354, 355, 356, 357, 358, 359, 360, 361, 362, 363, 364, 365, 366, 367, 368, 369, 370, 371, 372, 373, 374, 375, 376, 377, 378, 379, 380, 381, 382, 383, 384, 385, 386, 387, 388, 389, 390, 391, 392, 393, 394, 395, 396, 397, 398, 399, 400, 401, 402, 403, 404, 405, 406, 407, 408, 409, 410, 411, 412, 413, 414, 415, 416, 417, 418, 419, 420, 421, 422, 423, 424, 425, 426, 427, 428, 429, 430, 431, 432, 433, 434, 435, 436, 437, 438, 439, 440, 441, 442, 443, 444, 445, 446, 447, 448, 449, 450, 451, 452, 453, 454, 455, 456, 457, 458, 459, 460, 461, 462, 463, 464, 465, 466, 467, 468, 469, 470, 471, 472, 473, 474, 475, 476, 477, 478, 479, 480, 481, 482, 483, 484, 485, 486, 487, 488, 489, 490, 491, 492, 493, 494, 495, 496, 497, 498, 499, 500, 501, 502, 503, 504, 505, 506, 507, 508, 509, 510, 511, 512, 513, 514, 515, 516, 517, 518, 519, 520, 521, 522, 523, 524, 525, 526, 527, 528, 529, 530, 531, 532, 533, 534, 535, 536, 537, 538, 539, 540, 541, 542, 543, 544, 545, 546, 547, 548, 549, 550, 551, 552, 553, 554, 555, 556, 557, 558, 559, 560, 561, 562, 563, 564, 565, 566, 567, 568, 569, 570, 571, 572, 573, 574, 575, 576, 577, 578, 579, 580, 581, 582, 583, 584, 585, 586, 587, 588, 589, 590, 591, 592, 593, 594, 595, 596, 597, 598, 599, 600, 601, 602, 603, 604, 605, 606, 607, 608, 609, 610, 611, 612, 613, 614, 615, 616, 617, 618, 619, 620, 621, 622, 623, 624, 625, 626, 627, 628, 629, 630, 631, 632, 633, 634, 635, 636, 637, 638, 639, 640, 641, 642, 643, 644, 645, 646, 647, 648, 649, 650, 651, 652, 653, 654, 655, 656, 657, 658, 659, 660, 661, 662, 663, 664, 665, 666, 667, 668, 669, 670, 671, 672, 673, 674, 675, 676, 677, 678, 679, 680, 681, 682, 683, 684, 685, 686, 687, 688, 689, 690, 691, 692, 693, 694, 695, 696, 697, 698, 699, 700, 701, 702, 703, 704, 705, 706, 707, 708, 709, 710, 711, 712, 713, 714, 715, 716, 717, 718, 719, 720, 721, 722, 723, 724, 725, 726, 727, 728, 729, 730, 731, 732, 733, 734, 735, 736, 737, 738, 739, 740, 741, 742, 743, 744, 745, 746, 747, 748, 749, 750, 751, 752, 753, 754, 755, 756, 757, 758, 759, 760, 761, 762, 763, 764, 765, 766, 767, 768, 769, 770, 771, 772, 773, 774, 775, 776, 777, 778, 779, 780, 781, 782, 783, 784, 785, 786, 787, 788, 789, 790, 791, 792, 793, 794, 795, 796, 797, 798, 799, 800, 801, 802, 803, 804, 805, 806, 807, 808, 809, 810, 811, 812, 813, 814, 815, 816, 817, 818, 819, 820, 821, 822, 823, 824, 825, 826, 827, 828, 829, 830, 831, 832, 833, 834, 835, 836, 837, 838, 839, 840, 841, 842, 843, 844, 845, 846, 847, 848, 849, 850, 851, 852, 853, 854, 855, 856, 857, 858, 859, 860, 861, 862, 863, 864, 865, 866, 867, 868, 869, 870, 871, 872, 873, 874, 875, 876, 877, 878, 879, 880, 881, 882, 883, 884, 885, 886, 887, 888, 889, 890, 891, 892, 893, 894, 895, 896, 897, 898, 899, 900, 901, 902, 903, 904, 905, 906, 907, 908, 909, 910, 911, 912, 913, 914, 915, 916, 917, 918, 919, 920, 921, 922, 923, 924, 925, 926, 927, 928, 929, 930, 931, 932, 933, 934, 935, 936, 937, 938, 939, 940, 941, 942, 943, 944, 945, 946, 947, 948, 949, 950, 951, 952, 953, 954, 955, 956, 957, 958, 959, 960, 961, 962, 963, 964, 965, 966, 967, 968, 969, 970, 971, 972, 973, 974, 975, 976, 977, 978, 979, 980, 981, 982, 983, 984, 985, 986, 987, 988, 989, 990, 991, 992, 993, 994, 995, 996, 997, 998, 999, 1000



REMARKS

THIS PLAN IS TO BE USED FOR THE CONSTRUCTION OF THE MORGAN LIBRARY EXTENSION. IT IS THE RESPONSIBILITY OF THE CONTRACTOR TO VERIFY THE ACCURACY OF THE INFORMATION SHOWN HEREON.

SCALE OF DRAWING

1" = 10'-0"

LEGEND AND ABBREVIATIONS

1" = 10'-0"
 1/4" = 3'-0"
 1/8" = 1'-6"
 1/16" = 9"
 1/32" = 4-1/2"
 1/64" = 2-1/4"
 1/128" = 1-1/8"
 1/256" = 3/8"
 1/512" = 3/16"
 1/1024" = 3/32"
 1/2048" = 3/64"
 1/4096" = 3/128"
 1/8192" = 3/256"
 1/16384" = 3/512"
 1/32768" = 3/1024"
 1/65536" = 3/2048"
 1/131072" = 3/4096"
 1/262144" = 3/8192"
 1/524288" = 3/16384"
 1/1048576" = 3/32768"
 1/2097152" = 3/65536"
 1/4194304" = 3/131072"
 1/8388608" = 3/262144"
 1/16777216" = 3/524288"
 1/33554432" = 3/1048576"
 1/67108864" = 3/2097152"
 1/134217728" = 3/4194304"
 1/268435456" = 3/8388608"
 1/536870912" = 3/16777216"
 1/1073741824" = 3/33554432"
 1/2147483648" = 3/67108864"
 1/4294967296" = 3/134217728"
 1/8589934592" = 3/268435456"
 1/17179869184" = 3/536870912"
 1/34359738368" = 3/1073741824"
 1/68719476736" = 3/2147483648"
 1/137438953472" = 3/4294967296"
 1/274877906944" = 3/8589934592"
 1/549755813888" = 3/17179869184"
 1/1099511627776" = 3/34359738368"
 1/2199023255552" = 3/68719476736"
 1/4398046511104" = 3/137438953472"
 1/8796093022208" = 3/274877906944"
 1/17592186044416" = 3/549755813888"
 1/35184372088832" = 3/1099511627776"
 1/70368744177664" = 3/2199023255552"
 1/140737488355328" = 3/4398046511104"
 1/281474976710656" = 3/8796093022208"
 1/562949953421312" = 3/17592186044416"
 1/1125899906842624" = 3/35184372088832"
 1/2251799813685248" = 3/70368744177664"
 1/4503599627370496" = 3/140737488355328"
 1/9007199254740992" = 3/281474976710656"
 1/18014398509481984" = 3/562949953421312"
 1/36028797018963968" = 3/1125899906842624"
 1/72057594037927936" = 3/2251799813685248"
 1/144115188075855872" = 3/4503599627370496"
 1/288230376151711744" = 3/9007199254740992"
 1/576460752303423488" = 3/18014398509481984"
 1/1152921504606846976" = 3/36028797018963968"
 1/2305843009213693952" = 3/72057594037927936"
 1/4611686018427387904" = 3/144115188075855872"
 1/9223372036854775808" = 3/288230376151711744"
 1/18446744073709551616" = 3/576460752303423488"
 1/36893488147419103232" = 3/1152921504606846976"
 1/73786976294838206464" = 3/2305843009213693952"
 1/147573952589676412928" = 3/4611686018427387904"
 1/295147905179352825856" = 3/9223372036854775808"
 1/590295810358705651712" = 3/18446744073709551616"
 1/1180591620717411303424" = 3/36893488147419103232"
 1/2361183241434822606848" = 3/73786976294838206464"
 1/4722366482869645213696" = 3/147573952589676412928"
 1/9444732965739290427392" = 3/295147905179352825856"
 1/18889465931478580854784" = 3/590295810358705651712"
 1/37778931862957161709568" = 3/1180591620717411303424"
 1/75557863725914323419136" = 3/2361183241434822606848"
 1/151115727451828646838272" = 3/4722366482869645213696"
 1/302231454903657293676544" = 3/9444732965739290427392"
 1/604462909807314587353088" = 3/18889465931478580854784"
 1/1208925819614629174706176" = 3/37778931862957161709568"
 1/2417851639229258349412352" = 3/75557863725914323419136"
 1/4835703278458516698824704" = 3/151115727451828646838272"
 1/9671406556917033397649408" = 3/302231454903657293676544"
 1/19342813113834066795298816" = 3/604462909807314587353088"
 1/38685626227668133590597632" = 3/1208925819614629174706176"
 1/77371252455336267181195264" = 3/2417851639229258349412352"
 1/154742504910672534362390528" = 3/4835703278458516698824704"
 1/309485009821345068724781056" = 3/9671406556917033397649408"
 1/618970019642690137449562112" = 3/19342813113834066795298816"
 1/1237940039285380274899124224" = 3/38685626227668133590597632"
 1/2475880078570760549798248448" = 3/77371252455336267181195264"
 1/4951760157141521099596496896" = 3/154742504910672534362390528"
 1/9903520314283042199192993792" = 3/309485009821345068724781056"
 1/19807040628566084398385987584" = 3/618970019642690137449562112"
 1/39614081257132168796771975168" = 3/1237940039285380274899124224"
 1/79228162514264337593543950336" = 3/2475880078570760549798248448"
 1/158456325028528675187087900672" = 3/4951760157141521099596496896"
 1/316912650057057350374175801344" = 3/9903520314283042199192993792"
 1/633825300114114700748351602688" = 3/19807040628566084398385987584"
 1/1267650600228229401496703205376" = 3/39614081257132168796771975168"
 1/2535301200456458802993406410752" = 3/79228162514264337593543950336"
 1/5070602400912917605986812821504" = 3/158456325028528675187087900672"
 1/10141204801825835211973625643008" = 3/316912650057057350374175801344"
 1/20282409603651670423947251286016" = 3/633825300114114700748351602688"
 1/40564819207303340847894502572032" = 3/1267650600228229401496703205376"
 1/81129638414606681695789005144064" = 3/2535301200456458802993406410752"
 1/162259276833213363391578010288128" = 3/5070602400912917605986812821504"
 1/324518553666426726783156020576256" = 3/10141204801825835211973625643008"
 1/649037107332853453566312041152512" = 3/20282409603651670423947251286016"
 1/1298074214665706907132624082305024" = 3/40564819207303340847894502572032"
 1/2596148429331413814265248164610048" = 3/81129638414606681695789005144064"
 1/5192296858662827628530496329220096" = 3/162259276833213363391578010288128"
 1/10384593717325655257060992658440192" = 3/324518553666426726783156020576256"
 1/20769187434651310514121985316880384" = 3/649037107332853453566312041152512"
 1/41538374869302621028243970633760768" = 3/1298074214665706907132624082305024"
 1/83076749738605242056487941267521536" = 3/2596148429331413814265248164610048"
 1/166153499477210484112975882535042672" = 3/5192296858662827628530496329220096"
 1/332306998954420968225951765070085344" = 3/10384593717325655257060992658440192"
 1/664613997908841936451903530140170688" = 3/20769187434651310514121985316880384"
 1/1329227995817683872903807060280341376" = 3/41538374869302621028243970633760768"
 1/2658455991635367745807614120560682752" = 3/83076749738605242056487941267521536"
 1/5316911983270735491615228241121365504" = 3/166153499477210484112975882535042672"
 1/10633823966541470983230456482242731008" = 3/332306998954420968225951765070085344"
 1/21267647933082941966460912964485462016" = 3/664613997908841936451903530140170688"
 1/42535295866165883932921825928970924032" = 3/1329227995817683872903807060280341376"
 1/85070591732331767865843651857941848064" = 3/2658455991635367745807614120560682752"
 1/170141183464663535731687303715883696128" = 3/5316911983270735491615228241121365504"
 1/340282366929327071463374607431767392256" = 3/10633823966541470983230456482242731008"
 1/680564733858654142926749214863534784512" = 3/21267647933082941966460912964485462016"
 1/1361129467717308285853498429727069569024" = 3/42535295866165883932921825928970924032"
 1/2722258935354616571706996859454139138048" = 3/85070591732331767865843651857941848064"
 1/5444517870709233143413993718908278276096" = 3/170141183464663535731687303715883696128"
 1/10889035741418466286827987437816556552192" = 3/340282366929327071463374607431