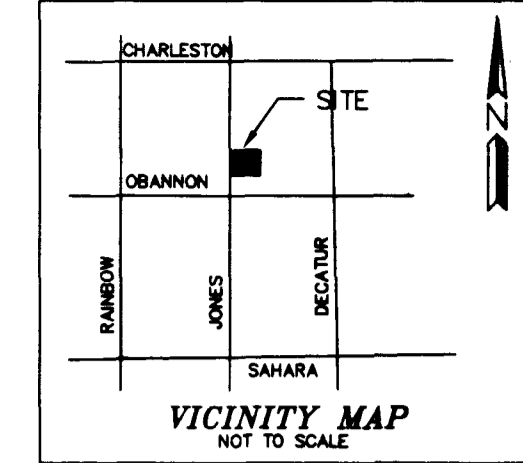
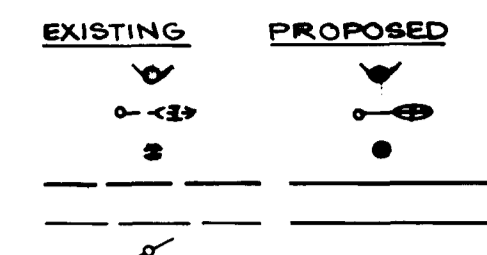


**LEGEND AND ABBREVIATIONS**

- FIRE HYDRANT
- STREET LIGHT
- WATER VALVE
- WATER OR SEWER LINE
- STREET LIGHT CONDUIT
- POWER POLE
- INVERT
- SEWER MANHOLE
- TOP OF MANHOLE
- STREET LIGHT
- TELEPHONE
- GAS
- WATER
- SEWER
- STUB OUT



**SAFETY ALERT**

Call Before You Overhead

1-702-593-6111

Avoid cutting underground utility lines. It's costly.

**Call before you Dig**

1-800-227-2600

- LAS VEGAS VALLEY WATER DISTRICT STANDARD NOTES**
- No work shall begin until the water plans have been released for construction by the LVVWD. Following water plan approval, 48 hour notice shall be given to the LVVWD Communication Support Center (258-7171) prior to the start of construction. Notice must be given by 2:00 p.m. the business day prior to a LVVWD inspection.
  - All work shall conform to the LVVWD's Standard Plates, Drawings, and Specifications and the Uniform Design and Construction Standards for Water Distribution Systems (UDACS), latest edition.
  - All work, except as modified by these plans or by Note 2, shall be done in accordance with the most current draft or edition of the Uniform Standard Specifications for Public Works Construction Office Improvement, Clark County Area.
  - A single pipe material shall be used throughout the project unless otherwise approved by the LVVWD.
  - All service laterals two (2) inches in diameter and smaller shall be copper tubing with LVVWD approved service saddles.
  - All water meter boxes shall be located outside of driveway areas.
  - All valves shall be located outside of driveways, valley and curb gutters.
  - The following requirements must be met in the event a water line and sanitary or storm sewer line cross:
    - A minimum eighteen (18) inch vertical separation (outside to outside) must be maintained when the water line is installed over the sanitary or storm sewer line. If the vertical separation cannot be maintained or the water line must be placed under the sanitary or storm sewer line, the sanitary or storm sewer line must be constructed with one of the following or as shown on these plans:
      - Potable Water supply quality material.
      - Encasement with four (4) inch concrete (minimum)
      - Sleeving with potable water supply quality pipe.
    - Each provision must extend along the sanitary or storm sewer, on either side of the main, a minimum 10 foot distance perpendicular to the water main exterior.
  - Warning tape shall be required over all mains, all six (6) inch diameter and larger service laterals, and any service lateral not installed perpendicular to the main in accordance with Standard Plate No. 27.
  - All water facilities shall be filled, disinfected, pressure tested, flushed, filled and an acceptable water sample obtained, prior to connection to the LVVWD's distribution system.
  - The contractor must obtain all meters two (2) inches and smaller from LVVWD Central Stores. Telephone 258-3152 forty-eight (48) hours prior to pickup.
  - Construction may interrupt service, with LVVWD approval and proper notification, between the hours of 10 PM and 6 AM, Sunday through Thursday. Circumstances may require temporary service feeds be installed, without LVVWD reimbursement. Any temporary service feed must have prior LVVWD approval.
  - All water facility construction materials used must be as listed on the LVVWD's Pre-Approved Materials and Manufacturers Listing for New Facilities, latest revision, or specifically approved on these plans.

**WATER QUANTITIES**

PUBLIC	
1) 8" PVC CLISO WATER LINE	60 LF
2) 8" x 8" TAPPING TEE W/ 8" MA TAPPING VALVE	1 EA.
UDACS PLATE NO. 22	
3) 1/2" SERVICE INSTALLATION W/METER	1 EA.
UDACS PLATE NO. 1D	
4) 1/2" SERVICE SADDLE	1 EA.

**PRIVATE**

1) 8" PVC WATER LINE	315 LF
2) 8" PVC WATER LINE	50 LF
3) 2" PVC WATER LINE	269 LF
4) 8" x 8" REDUCER	3 EA.
5) 6" x 8" TEE	1 EA.
6) 2" ELBOW	1 EA.
7) 6" ELBOW	1 EA.
8) GATE VALVE	1 EA.
9) FIRE HYDRANT INSTALLATION	1 EA.
UDACS PLATE NO. 7	
10) 8" 90° ELBOW	1 EA.
11) 2" x 1 1/2" REDUCER	1 EA.
12) 8" O.D.A., UDACS PLATE NO. 20B.	1 EA.
13) 10" x 20" BASEMENT TO L.V.V.W.D.	1 EA.
14) 1/2" R.F.P.P.A., UDACS PLATE NO. 11A	1 EA.
15) 8" 45° ELBOW	1 EA.

**SEWER QUANTITIES**

PRIVATE	
1) 8" PVC SEWER LINE	82 LF
2) 4" CLEANOUT	1 EA.

**SEWAGE FLOW**

24 FIXTURE UNITS X 0.45 ERU'S / FIXTURE X  
250 GPD / ERU = 2700 GPD

**SEWER CONTRIBUTION**

AVERAGE DAILY FLOW	1250 GPD
DAILY PEAK FLOW	3,125 GPD

**FIRE FLOW CALCULATION**

FIRE FLOW REQUIREMENT IS	1500 GALLONS PER MINUTE AT 20 PSI RESIDUAL
BASED ON:	
SQUARE FOOTAGE	12,500
BUILDING HEIGHT	2 STORY
TYPE OF CONSTRUCTION	V-N
OCCUPANCY	OFFICE COMPLEX
SPRINKLER SYSTEM	YES

**APPROVAL**

*Amey Chang* 6/24/98  
CITY FIRE MARSHAL DATE:

**NOTES**

- FOR WATER LINE TRENCHING AND REPAVING REQUIREMENTS, REFER TO C.C.A. UNIFORM STD. DWG. NO. 503 AND UDACS PLATE NO. 6B. REMOVE EXISTING PAVING AND RECONSTRUCT CROSS HATCH AREA AS FOLLOWS: 10 FT. MIN. WIDTH MACHINE LAID PAVEMENT REPLACEMENT, FOG SEAL OVER 3" A.C. OVER PRIME COAT OVER 4" TYPE II AGGREGATE BASE OVER 6" TYPE I AGGREGATE BASE. COMPACTION REQUIREMENTS APPLICABLE.
- 6" PVC SEWER STUBS AND CAPPED. SEE PLUMBING OR MECHANICAL DRAWINGS FOR SEWER AND WATER LINES CONTINUATION.

**PROJECT NAME: DECO PLAZA**

This project water plan complies with the Las Vegas Valley Water District's technical requirements. However, this water plan is **NOT APPROVED FOR CONSTRUCTION** at this time and this signature does not provide or imply a water commitment.

*David S. Fisher* 6-18-98  
LVVWD DATE

APPROVAL  
LAS VEGAS VALLEY WATER DISTRICT DATE

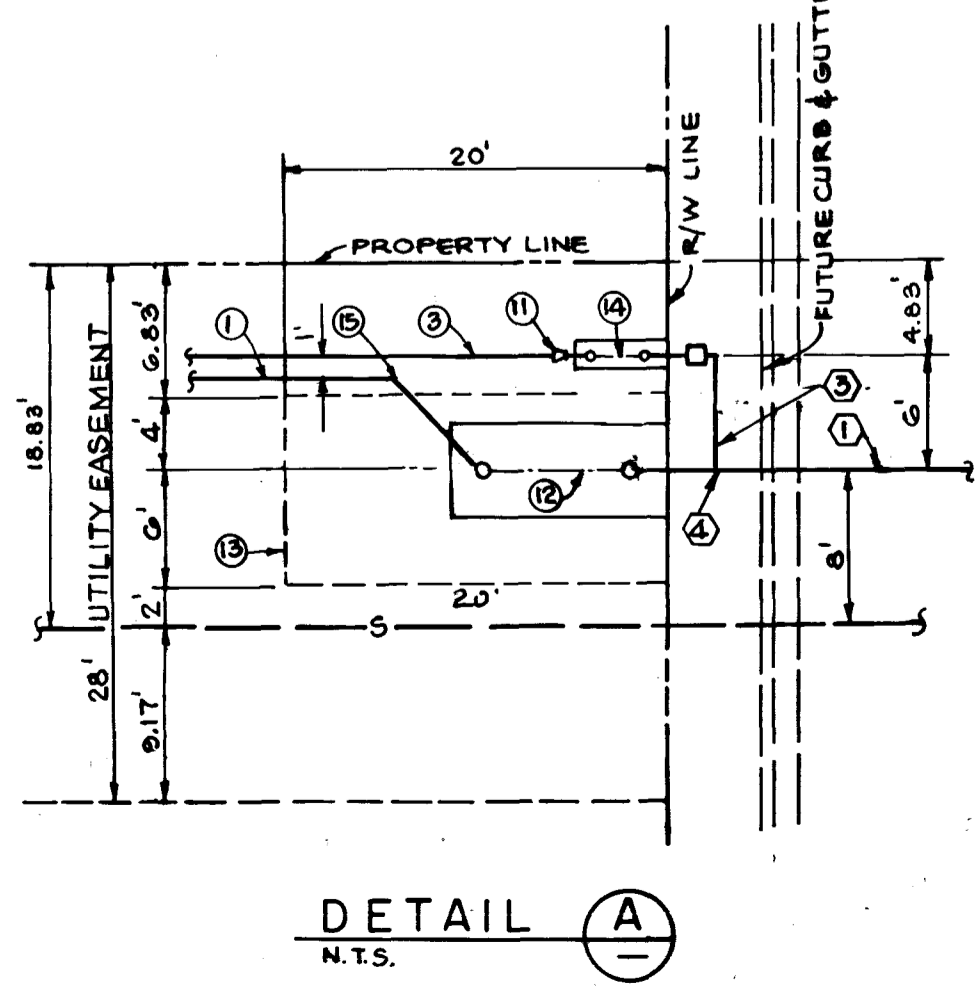
**REDUCED PRESSURE PRINCIPLE ASSEMBLY**

Approved Reduced Pressure Assembly(s) shall be installed per the District's Standard Plate No. 114. No water shall be taken from a service requiring backflow prevention until the reduced pressure principle assembly has been successfully tested by the LVVWD.

Any block wall or other fence material shall be designed and constructed around the outside of the assembly(s), so as to allow the District direct access from the adjacent right-of-way.

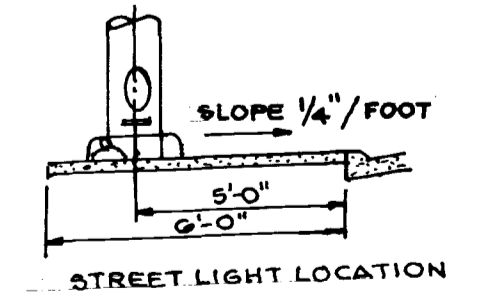
**INSTALLATION OF DOUBLE CHECK DETECTOR ASSEMBLY**

The double check detector assemblies shall be installed in accordance with the UDACS plate 20B. Any block wall or other fence material shall be designed and constructed around the outside of the assembly(s), so as to allow the District direct access from the adjacent right-of-way.

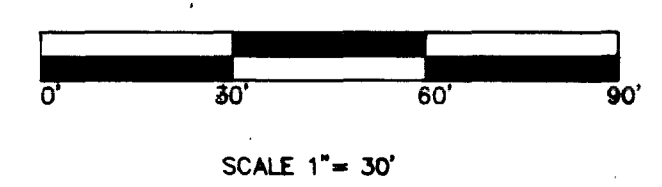


**NOTE**

JONES BLVD. IS A NEVADA DEPARTMENT OF TRANSPORTATION MAINTAINED ROAD FROM BACK OF CURB TO BACK OF CURB. THE CITY OF LAS VEGAS DOES NOT REVIEW THESE PLANS FOR CONFORMANCE WITH NDOT STANDARDS. A SEPARATE REVIEW, APPROVAL AND ENCROACHMENT PERMIT MUST BE OBTAINED FROM NDOT PRIOR TO CONSTRUCTION.  
PERMIT MUST BE PULL FROM C.L.V. FOR STREET LIGHT WORK



**STREET LIGHT NOTE:**  
ALL HAND HOLE COVERS MUST BE INSTALLED, POLE CAPS POURED AND PULL BOX LIDS BOLTED DOWN PRIOR TO ENERGIZING CIRCUIT. ALL WIRE MUST HAVE THW INSTALLATION



LIB Engineering  
LEONARD BRUNO  
940 S. MARTIN L. KING  
LAS VEGAS NV, 89106  
(702) 382-7559

Drawn by	Check by	Date	Scale	REV.	BY	DATE	DESCRIPTION
ASB			1"=20'				

**MICHAEL THURSTON**  
**DECO PLAZA**

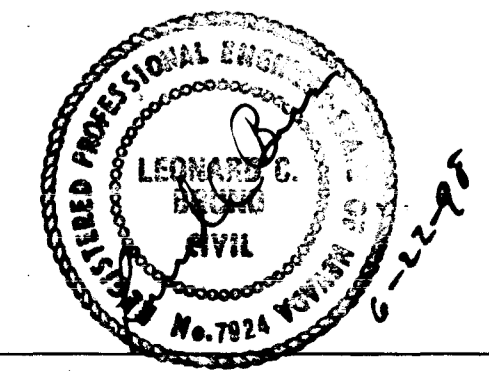
UTILITY PLAN

DRAWING NO.  
107V-2876

SHEET C3  
OF 3 OF 3

107-V2876

03-19



**NOTES**

1. ALL WORK SHALL BE IN ACCORDANCE WITH THE LATEST EDITIONS OF THE NATIONAL ELECTRICAL CODE (NEC) AND THE NATIONAL FIRE ALARM AND SIGNAL CODE (NFPA 72).
2. THE CONTRACTOR SHALL BE RESPONSIBLE FOR OBTAINING ALL NECESSARY PERMITS FROM THE LOCAL AUTHORITIES.
3. ALL MATERIALS AND WORKMANSHIP SHALL BE SUBJECT TO INSPECTION AND APPROVAL BY THE LOCAL AUTHORITIES.
4. THE CONTRACTOR SHALL MAINTAIN ACCESS TO ALL ADJACENT PROPERTIES AND UTILITIES AT ALL TIMES.
5. ALL ELECTRICAL WORK SHALL BE PROTECTED AGAINST DAMAGE FROM CONSTRUCTION ACTIVITIES.
6. THE CONTRACTOR SHALL PROVIDE ADEQUATE PROTECTION FOR ALL EXISTING UTILITIES.
7. ALL ELECTRICAL PANELS SHALL BE INSTALLED IN ACCORDANCE WITH THE NEC REQUIREMENTS.
8. THE CONTRACTOR SHALL PROVIDE ADEQUATE VENTILATION FOR ALL ELECTRICAL EQUIPMENT.
9. ALL ELECTRICAL WORK SHALL BE COMPLETED WITHIN THE SPECIFIED TIME FRAME.
10. THE CONTRACTOR SHALL PROVIDE ADEQUATE PROTECTION FOR ALL ELECTRICAL EQUIPMENT.

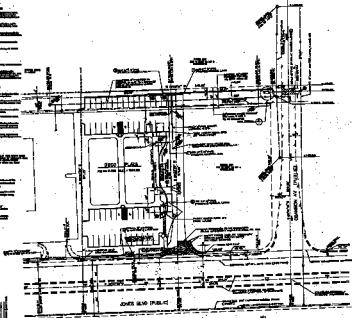
**LEGEND AND ABBREVIATIONS**

- 12 AWG THHN
- 14 AWG THHN
- 16 AWG THHN
- 18 AWG THHN
- 20 AWG THHN
- 22 AWG THHN
- 24 AWG THHN
- 26 AWG THHN
- 28 AWG THHN
- 30 AWG THHN
- 32 AWG THHN
- 34 AWG THHN
- 36 AWG THHN
- 38 AWG THHN
- 40 AWG THHN
- 42 AWG THHN
- 44 AWG THHN
- 46 AWG THHN
- 48 AWG THHN
- 50 AWG THHN
- 52 AWG THHN
- 54 AWG THHN
- 56 AWG THHN
- 58 AWG THHN
- 60 AWG THHN
- 62 AWG THHN
- 64 AWG THHN
- 66 AWG THHN
- 68 AWG THHN
- 70 AWG THHN
- 72 AWG THHN
- 74 AWG THHN
- 76 AWG THHN
- 78 AWG THHN
- 80 AWG THHN
- 82 AWG THHN
- 84 AWG THHN
- 86 AWG THHN
- 88 AWG THHN
- 90 AWG THHN
- 92 AWG THHN
- 94 AWG THHN
- 96 AWG THHN
- 98 AWG THHN
- 100 AWG THHN



**SAFETY ALERT**  
 Before You Overhead  
 1-800-85-8585

**SAFETY ALERT**  
 Before You Overhead  
 1-800-85-8585



**WIRE SCHEDULE**

NO.	TYPE	SIZE	QUANTITY	REMARKS
1	12 AWG THHN	12	100	TO PANEL
2	14 AWG THHN	14	200	TO PANEL
3	16 AWG THHN	16	300	TO PANEL
4	18 AWG THHN	18	400	TO PANEL
5	20 AWG THHN	20	500	TO PANEL
6	22 AWG THHN	22	600	TO PANEL
7	24 AWG THHN	24	700	TO PANEL
8	26 AWG THHN	26	800	TO PANEL
9	28 AWG THHN	28	900	TO PANEL
10	30 AWG THHN	30	1000	TO PANEL
11	32 AWG THHN	32	1100	TO PANEL
12	34 AWG THHN	34	1200	TO PANEL
13	36 AWG THHN	36	1300	TO PANEL
14	38 AWG THHN	38	1400	TO PANEL
15	40 AWG THHN	40	1500	TO PANEL
16	42 AWG THHN	42	1600	TO PANEL
17	44 AWG THHN	44	1700	TO PANEL
18	46 AWG THHN	46	1800	TO PANEL
19	48 AWG THHN	48	1900	TO PANEL
20	50 AWG THHN	50	2000	TO PANEL
21	52 AWG THHN	52	2100	TO PANEL
22	54 AWG THHN	54	2200	TO PANEL
23	56 AWG THHN	56	2300	TO PANEL
24	58 AWG THHN	58	2400	TO PANEL
25	60 AWG THHN	60	2500	TO PANEL
26	62 AWG THHN	62	2600	TO PANEL
27	64 AWG THHN	64	2700	TO PANEL
28	66 AWG THHN	66	2800	TO PANEL
29	68 AWG THHN	68	2900	TO PANEL
30	70 AWG THHN	70	3000	TO PANEL
31	72 AWG THHN	72	3100	TO PANEL
32	74 AWG THHN	74	3200	TO PANEL
33	76 AWG THHN	76	3300	TO PANEL
34	78 AWG THHN	78	3400	TO PANEL
35	80 AWG THHN	80	3500	TO PANEL
36	82 AWG THHN	82	3600	TO PANEL
37	84 AWG THHN	84	3700	TO PANEL
38	86 AWG THHN	86	3800	TO PANEL
39	88 AWG THHN	88	3900	TO PANEL
40	90 AWG THHN	90	4000	TO PANEL
41	92 AWG THHN	92	4100	TO PANEL
42	94 AWG THHN	94	4200	TO PANEL
43	96 AWG THHN	96	4300	TO PANEL
44	98 AWG THHN	98	4400	TO PANEL
45	100 AWG THHN	100	4500	TO PANEL

**WIRE SCHEDULE**

NO.	TYPE	SIZE	QUANTITY	REMARKS
1	12 AWG THHN	12	100	TO PANEL
2	14 AWG THHN	14	200	TO PANEL
3	16 AWG THHN	16	300	TO PANEL
4	18 AWG THHN	18	400	TO PANEL
5	20 AWG THHN	20	500	TO PANEL
6	22 AWG THHN	22	600	TO PANEL
7	24 AWG THHN	24	700	TO PANEL
8	26 AWG THHN	26	800	TO PANEL
9	28 AWG THHN	28	900	TO PANEL
10	30 AWG THHN	30	1000	TO PANEL
11	32 AWG THHN	32	1100	TO PANEL
12	34 AWG THHN	34	1200	TO PANEL
13	36 AWG THHN	36	1300	TO PANEL
14	38 AWG THHN	38	1400	TO PANEL
15	40 AWG THHN	40	1500	TO PANEL
16	42 AWG THHN	42	1600	TO PANEL
17	44 AWG THHN	44	1700	TO PANEL
18	46 AWG THHN	46	1800	TO PANEL
19	48 AWG THHN	48	1900	TO PANEL
20	50 AWG THHN	50	2000	TO PANEL
21	52 AWG THHN	52	2100	TO PANEL
22	54 AWG THHN	54	2200	TO PANEL
23	56 AWG THHN	56	2300	TO PANEL
24	58 AWG THHN	58	2400	TO PANEL
25	60 AWG THHN	60	2500	TO PANEL
26	62 AWG THHN	62	2600	TO PANEL
27	64 AWG THHN	64	2700	TO PANEL
28	66 AWG THHN	66	2800	TO PANEL
29	68 AWG THHN	68	2900	TO PANEL
30	70 AWG THHN	70	3000	TO PANEL
31	72 AWG THHN	72	3100	TO PANEL
32	74 AWG THHN	74	3200	TO PANEL
33	76 AWG THHN	76	3300	TO PANEL
34	78 AWG THHN	78	3400	TO PANEL
35	80 AWG THHN	80	3500	TO PANEL
36	82 AWG THHN	82	3600	TO PANEL
37	84 AWG THHN	84	3700	TO PANEL
38	86 AWG THHN	86	3800	TO PANEL
39	88 AWG THHN	88	3900	TO PANEL
40	90 AWG THHN	90	4000	TO PANEL
41	92 AWG THHN	92	4100	TO PANEL
42	94 AWG THHN	94	4200	TO PANEL
43	96 AWG THHN	96	4300	TO PANEL
44	98 AWG THHN	98	4400	TO PANEL
45	100 AWG THHN	100	4500	TO PANEL

**WIRE SCHEDULE**

NO.	TYPE	SIZE	QUANTITY	REMARKS
1	12 AWG THHN	12	100	TO PANEL
2	14 AWG THHN	14	200	TO PANEL
3	16 AWG THHN	16	300	TO PANEL
4	18 AWG THHN	18	400	TO PANEL
5	20 AWG THHN	20	500	TO PANEL
6	22 AWG THHN	22	600	TO PANEL
7	24 AWG THHN	24	700	TO PANEL
8	26 AWG THHN	26	800	TO PANEL
9	28 AWG THHN	28	900	TO PANEL
10	30 AWG THHN	30	1000	TO PANEL
11	32 AWG THHN	32	1100	TO PANEL
12	34 AWG THHN	34	1200	TO PANEL
13	36 AWG THHN	36	1300	TO PANEL
14	38 AWG THHN	38	1400	TO PANEL
15	40 AWG THHN	40	1500	TO PANEL
16	42 AWG THHN	42	1600	TO PANEL
17	44 AWG THHN	44	1700	TO PANEL
18	46 AWG THHN	46	1800	TO PANEL
19	48 AWG THHN	48	1900	TO PANEL
20	50 AWG THHN	50	2000	TO PANEL
21	52 AWG THHN	52	2100	TO PANEL
22	54 AWG THHN	54	2200	TO PANEL
23	56 AWG THHN	56	2300	TO PANEL
24	58 AWG THHN	58	2400	TO PANEL
25	60 AWG THHN	60	2500	TO PANEL
26	62 AWG THHN	62	2600	TO PANEL
27	64 AWG THHN	64	2700	TO PANEL
28	66 AWG THHN	66	2800	TO PANEL
29	68 AWG THHN	68	2900	TO PANEL
30	70 AWG THHN	70	3000	TO PANEL
31	72 AWG THHN	72	3100	TO PANEL
32	74 AWG THHN	74	3200	TO PANEL
33	76 AWG THHN	76	3300	TO PANEL
34	78 AWG THHN	78	3400	TO PANEL
35	80 AWG THHN	80	3500	TO PANEL
36	82 AWG THHN	82	3600	TO PANEL
37	84 AWG THHN	84	3700	TO PANEL
38	86 AWG THHN	86	3800	TO PANEL
39	88 AWG THHN	88	3900	TO PANEL
40	90 AWG THHN	90	4000	TO PANEL
41	92 AWG THHN	92	4100	TO PANEL
42	94 AWG THHN	94	4200	TO PANEL
43	96 AWG THHN	96	4300	TO PANEL
44	98 AWG THHN	98	4400	TO PANEL
45	100 AWG THHN	100	4500	TO PANEL

**WIRE SCHEDULE**

NO.	TYPE	SIZE	QUANTITY	REMARKS
1	12 AWG THHN	12	100	TO PANEL
2	14 AWG THHN	14	200	TO PANEL
3	16 AWG THHN	16	300	TO PANEL
4	18 AWG THHN	18	400	TO PANEL
5	20 AWG THHN	20	500	TO PANEL
6	22 AWG THHN	22	600	TO PANEL
7	24 AWG THHN	24	700	TO PANEL
8	26 AWG THHN	26	800	TO PANEL
9	28 AWG THHN	28	900	TO PANEL
10	30 AWG THHN	30	1000	TO PANEL
11	32 AWG THHN	32	1100	TO PANEL
12	34 AWG THHN	34	1200	TO PANEL
13	36 AWG THHN	36	1300	TO PANEL
14	38 AWG THHN	38	1400	TO PANEL
15	40 AWG THHN	40	1500	TO PANEL
16	42 AWG THHN	42	1600	TO PANEL
17	44 AWG THHN	44	1700	TO PANEL
18	46 AWG THHN	46	1800	TO PANEL
19	48 AWG THHN	48	1900	TO PANEL
20	50 AWG THHN	50	2000	TO PANEL
21	52 AWG THHN	52	2100	TO PANEL
22	54 AWG THHN	54	2200	TO PANEL
23	56 AWG THHN	56	2300	TO PANEL
24	58 AWG THHN	58	2400	TO PANEL
25	60 AWG THHN	60	2500	TO PANEL
26	62 AWG THHN	62	2600	TO PANEL
27	64 AWG THHN	64	2700	TO PANEL
28	66 AWG THHN	66	2800	TO PANEL
29	68 AWG THHN	68	2900	TO PANEL
30	70 AWG THHN	70	3000	TO PANEL
31	72 AWG THHN	72	3100	TO PANEL
32	74 AWG THHN	74	3200	TO PANEL
33	76 AWG THHN	76	3300	TO PANEL
34	78 AWG THHN	78	3400	TO PANEL
35	80 AWG THHN	80	3500	TO PANEL
36	82 AWG THHN	82	3600	TO PANEL
37	84 AWG THHN	84	3700	TO PANEL
38	86 AWG THHN	86	3800	TO PANEL
39	88 AWG THHN	88	3900	TO PANEL
40	90 AWG THHN	90	4000	TO PANEL
41	92 AWG THHN	92	4100	TO PANEL
42	94 AWG THHN	94	4200	TO PANEL
43	96 AWG THHN	96	4300	TO PANEL
44	98 AWG THHN	98	4400	TO PANEL
45	100 AWG THHN	100	4500	TO PANEL

**WIRE SCHEDULE**

NO.	TYPE	SIZE	QUANTITY	REMARKS
1	12 AWG THHN	12	100	TO PANEL
2	14 AWG THHN	14	200	TO PANEL
3	16 AWG THHN	16	300	TO PANEL
4	18 AWG THHN	18	400	TO PANEL
5	20 AWG THHN	20	500	TO PANEL
6	22 AWG THHN	22	600	TO PANEL
7	24 AWG THHN	24	700	TO PANEL
8	26 AWG THHN	26	800	TO PANEL
9	28 AWG THHN	28	900	TO PANEL
10	30 AWG THHN	30	1000	TO PANEL
11	32 AWG THHN	32	1100	TO PANEL
12	34 AWG THHN	34	1200	TO PANEL
13	36 AWG THHN	36	1300	TO PANEL
14	38 AWG THHN	38	1400	TO PANEL
15	40 AWG THHN	40	1500	TO PANEL
16	42 AWG THHN	42	1600	TO PANEL
17	44 AWG THHN	44	1700</	