

LAS VEGAS VALLEY WATER DISTRICT STANDARD NOTES

- No work shall begin until the water plans have been released for construction by the LVVWD. Following water plan approval, 48 hour notice shall be given to the LVVWD Communication Support Center (258-7171) prior to the start of construction. Notice must be given by 2:00 p.m. the business day prior to a LVVWD inspection.
- All work shall conform to the LVVWD's Standard Plates, Drawings, and Specifications and the Uniform Design and Construction Standards for Water Distribution Systems (UDACS), latest edition.
- All work, except as modified by these plans or by Note 2, shall be done in accordance with the most current draft or edition of the Uniform Standard Specifications for Public Works Construction Official Improvement, Clark County Area.
- A single pipe material shall be used throughout the project unless otherwise approved by the LVVWD.
- All service laterals two (2) inches in diameter and smaller shall be copper tubing with LVVWD approved service saddles.
- All water meter boxes shall be located outside of driveway areas.
- All valves shall be located outside of driveways, valley and curb gutters.
- The following requirements must be met in the event a water line and sanitary or storm sewer line cross:
 - A minimum eighteen (18) inch vertical separation (outside to outside) must be maintained when the water line is installed over the sanitary or storm sewer line. If the vertical separation cannot be maintained or the water line must be placed under the sanitary or storm sewer line, the sanitary or storm sewer line must be constructed with one of the following or, as shown on these plans:
 - Potable Water supply quality material.
 - Encasement, with four (4) inch concrete (minimum) Steeving with potable water supply quality pipe.
 Each provision must extend along the sanitary or storm sewer, on either side of the main, a minimum 10 foot distance perpendicular to the water main exterior.
- Warning tape shall be required over all mains, all six (6) inch diameter and larger service laterals, and any service lateral not installed perpendicular to the main in accordance with Standard Plate No. 27.
- All water facilities shall be filled, disinfected, pressure tested, flushed, and an acceptable water sample obtained, prior to connection to the LVVWD's distribution system.
- The contractor must obtain all meters two (2) inches and smaller from LVVWD Central Stores. Telephone 258-3152 forty-eight (48) hours prior to pickup.
- Construction may interrupt service, with LVVWD approval and proper notification, between the hours of 10 PM and 6 AM, Sunday through Thursday. Circumstances may require temporary service feeds be installed, without LVVWD reimbursement. Any temporary service feed must have prior LVVWD approval.
- All water facility construction materials used must be as listed on the LVVWD's Pre-Approved Materials and Manufacturers Listing for New Facilities, latest revision, or specifically approved on these plans.

REDUCED PRESSURE PRINCIPLE ASSEMBLY 1-1/2"

Approved Reduced Pressure Assembly(s) shall be installed per the District's Standard Plate No. 114. No water shall be taken from a service requiring backflow prevention until the reduced pressure principle assembly has been successfully tested by the LVVWD.

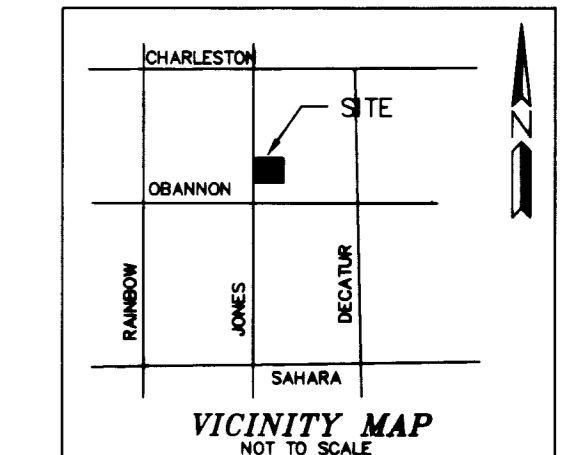
Any block wall or other fence material shall be designed and constructed around the outside of the easement(s), so as to allow the District direct access from the adjacent right-of-way.

INSTALLATION OF DOUBLE CHECK DETECTOR ASSEMBLY 1-5"

The double check detector assemblies shall be installed in accordance with the UDACS plat 208. Any block wall or other fence material shall be designed and constructed around the outside of easement(s), so as to allow the District direct access from the adjacent right-of-way.

LEGEND AND ABBREVIATIONS

- FIRE HYDRANT
- STREET LIGHT
- WATER VALVE
- WATER OR SEWER LINE
- STREET LIGHT CONDUIT
- POWER POLE
- INVERT
- SEWER MANHOLE
- TOP OF MANHOLE
- STREET LIGHT
- TELEPHONE
- GAS
- WATER
- SEWER
- STUB OUT



SAFETY ALERT
Call Before You Overhead
1-702-593-6111

Avoid cutting underground utility lines. It's costly.
Call before you Dig
1-800-227-2600

WATER QUANTITIES

DESCRIPTION	QUANTITY
PUBLIC	
1 8" PVC CLISO WATER LINE	50 LF
2 8" x 8" TAPPING TEE W/ 3/4" M.D. TAPPING VALVE	1 EA.
3 UDACS PLATE NO. 22	1 EA.
4 1/2" SERVICE INSTALLATION W/METER	1 EA.
5 UDACS PLATE NO. 1D	1 EA.
6 1/2" SERVICE SADDLE	1 EA.
PRIVATE	
1 8" PVC WATER LINE	315 LF
2 8" PVC WATER LINE	50 LF
3 2" PVC WATER LINE	269 LF
4 8" x 8" REDUCER	3 EA.
5 8" x 8" TEE	1 EA.
6 2" ELBOW	1 EA.
7 6" ELBOW	1 EA.
8 8" GATE VALVE	1 EA.
9 FIRE HYDRANT INSTALLATION	1 EA.
10 UDACS PLATE NO. 7	1 EA.
11 8" 90° ELBOW	1 EA.
12 8" DCDA, UDACS PLATE NO. 20B	1 EA.
13 20' EASEMENT TO L.V.V.W.D.	1 EA.
14 2" R.F.P.A., UDACS PLATE NO. 11A	1 EA.
15 8'4.5" ELBOW	1 EA.

SEWER QUANTITIES

DESCRIPTION	QUANTITY
PRIVATE	
6" PVC SEWER LINE	82 LF
4" CLEANOUT	1 EA.

SEWAGE FLOW

24 FIXTURE UNITS X 0.45 ERU'S / FIXTURE X 250 GPD / ERU = 2700 GPD

SEWER CONTRIBUTION

AVERAGE DAILY FLOW 1,250 GPD
DAILY PEAK FLOW 3,125 GPD

FIRE FLOW CALCULATION

FIRE FLOW REQUIREMENT IS 1500 GALLONS PER MINUTE AT 20 PSI RESIDUAL
BASED ON:
SQUARE FOOTAGE 12,500
BUILDING HEIGHT 2 STORY
TYPE OF CONSTRUCTION V-N
OCCUPANCY OFFICE COMPLEX
SPRINKLER SYSTEM YES

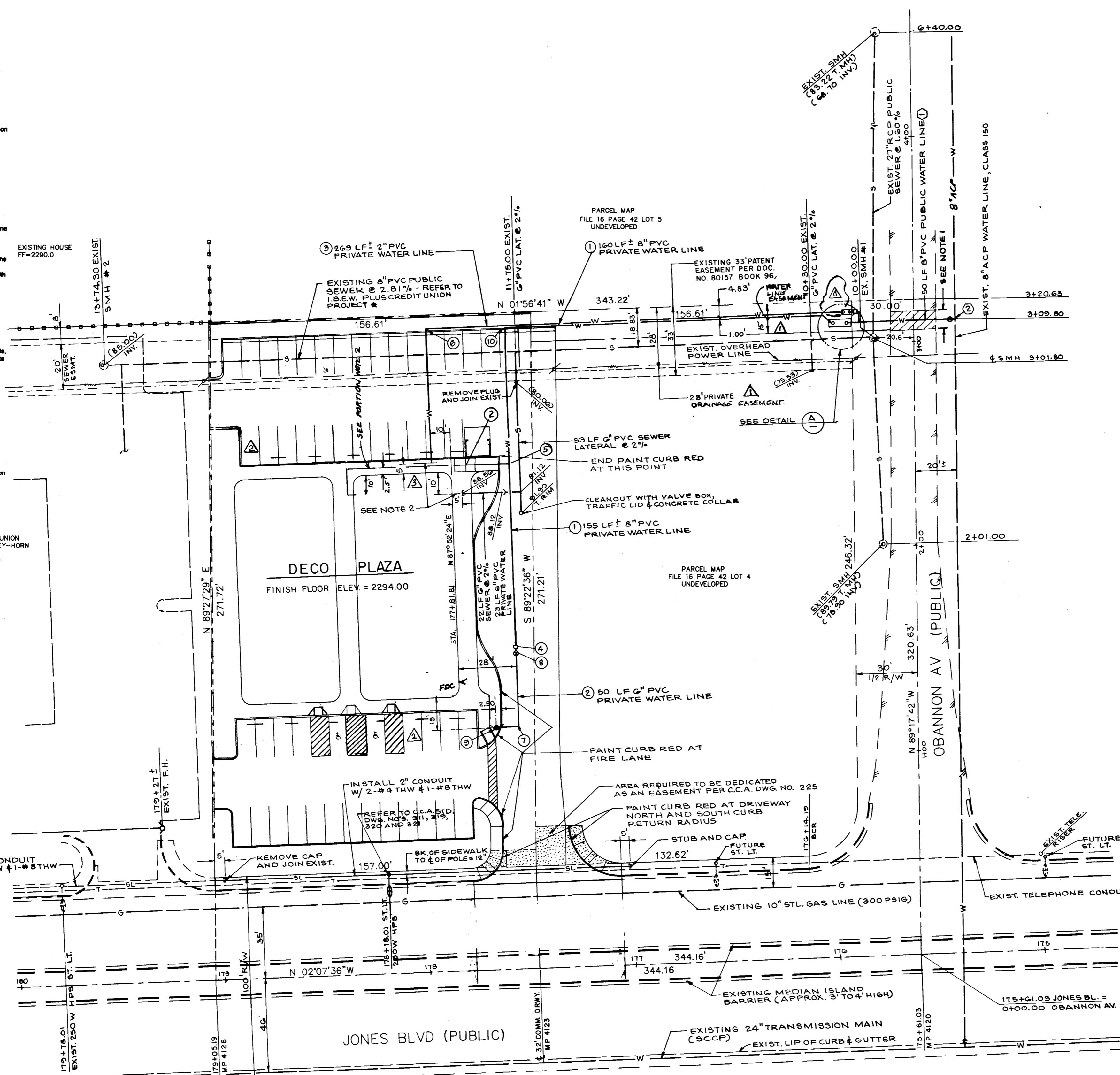
APPROVAL: Amy Chang, CITY FIRE MARSHAL, DATE: 6/24/98

NOTES

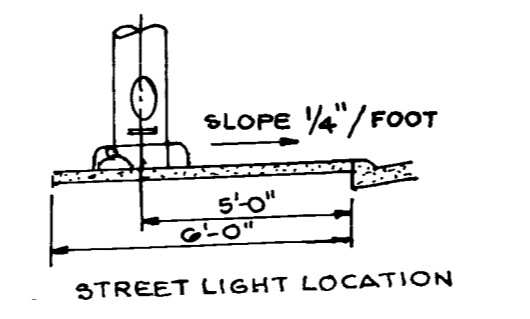
- FOR WATER LINE TRENCHING AND REPAIRING REQUIREMENTS, REFER TO C.C.A. UNIFORM STD. DWS. NO. 503 AND UDACS PLATE NO. 6B. REMOVED EXISTING PAVING AND RECONSTRUCT CROSS HATCH AREA AS FOLLOWS: 10 FT. MIN. WIDTH MACHINE LAID PAVEMENT REPLACEMENT, FOG SEAL OVER 3" A.C. OVER PRIME COAT OVER 4" TYPE II AGGREGATE BASE OVER 6" TYPE I AGGREGATE BASE. COMPACTION REQUIREMENTS APPLICABLE.
- 6" PVC SEWER STUB AND CAPPED. SEE PLUMBING OR MECHANICAL DRAWINGS FOR SEWER AND WATER LINES CONTINUATION.

PROJECT NAME: **DECO PLAZA**
P.C. 2 OF 5
This project water plan complies with the Las Vegas Valley Water District's technical requirements. However, this water plan is **NOT APPROVED FOR CONSTRUCTION** at this time and this signature does not provide or imply a water commitment.

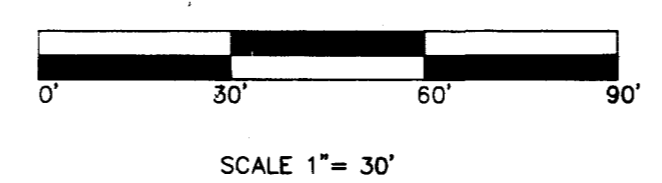
Signature: *Chaitin P... 6-18-98*
LVVWD DATE



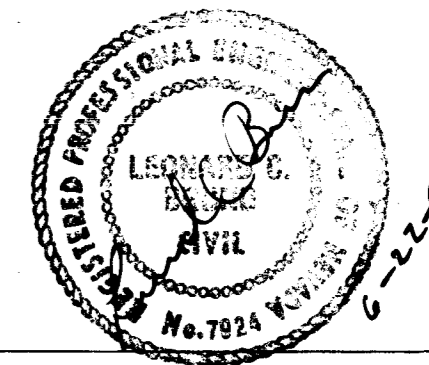
NOTE
JONES BLVD. IS A NEVADA DEPARTMENT OF TRANSPORTATION MAINTAINED ROAD FROM BACK OF CURB TO BACK OF CURB. THE CITY OF LAS VEGAS DOES NOT REVIEW THESE PLANS FOR CONFORMANCE WITH NDOT STANDARDS. A SEPARATE REVIEW, APPROVAL AND ENCROACHMENT PERMIT MUST BE OBTAINED FROM NDOT PRIOR TO CONSTRUCTION.
PERMIT MUST BE PULL FROM C.L.V. FOR STREET LIGHT WORK



STREET LIGHT NOTE:
ALL HAND HOLE COVERS MUST BE INSTALLED, POLE CAPS POURED, AND PULL BOX LIDS BOLTED DOWN PRIOR TO ENERGIZING CIRCUIT. ALL WIRE MUST HAVE THW INSTALLATION



APPROVAL: *[Signature]* 11/25/98
LAS VEGAS VALLEY WATER DISTRICT DATE



UTILITY PLAN
DRAWING NO. 107V-2876
SHEET C3 OF 3 OF 3
107-V2876
03-19

10801 (C) 10884 (C) 11389 (C) 11678 (C) 13432 (R) 16982

NOTES

1. ALL WORK SHALL BE IN ACCORDANCE WITH THE LATEST EDITIONS OF THE NATIONAL ELECTRICAL CODE (NEC) AND THE NATIONAL FIRE ALARM AND SIGNAL CODE (NFPA 72).

2. THE CONTRACTOR SHALL BE RESPONSIBLE FOR OBTAINING ALL NECESSARY PERMITS AND APPROVALS FROM THE LOCAL AUTHORITIES.

3. ALL MATERIALS AND WORKMANSHIP SHALL BE SUBJECT TO INSPECTION AND APPROVAL BY THE LOCAL AUTHORITIES.

4. THE CONTRACTOR SHALL MAINTAIN ACCESS TO ALL ADJACENT PROPERTIES AND UTILITIES AT ALL TIMES.

5. ALL ELECTRICAL WORK SHALL BE PROTECTED AGAINST OVERCURRENTS AND SHORT CIRCUITS.

6. ALL ELECTRICAL PANELS SHALL BE INSTALLED IN ACCORDANCE WITH THE NEC REQUIREMENTS FOR CLEARANCE AND PROTECTION.

7. ALL ELECTRICAL WIRING SHALL BE RUN IN ACCORDANCE WITH THE NEC REQUIREMENTS FOR CONDUIT AND CABLE SUPPORT.

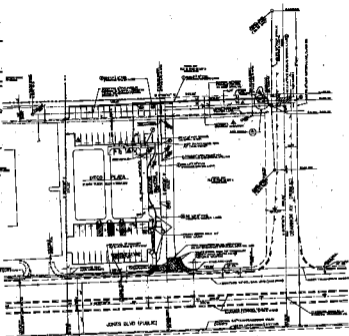
8. ALL ELECTRICAL WORK SHALL BE TESTED AND DOCUMENTED IN ACCORDANCE WITH THE NEC REQUIREMENTS FOR TESTING AND RECORDS.

9. THE CONTRACTOR SHALL BE RESPONSIBLE FOR THE PROTECTION OF ALL EXISTING UTILITIES AND STRUCTURES.

10. ALL ELECTRICAL WORK SHALL BE COMPLETED WITHIN THE SPECIFIED TIME FRAME.

REVISIONS

NO.	DATE	DESCRIPTION
1	10/15/20	ISSUED FOR PERMIT
2	10/20/20	REVISED PER LOCAL AUTHORITY COMMENTS
3	11/05/20	REVISED PER LOCAL AUTHORITY COMMENTS
4	11/15/20	REVISED PER LOCAL AUTHORITY COMMENTS
5	12/01/20	REVISED PER LOCAL AUTHORITY COMMENTS



NOTES

1. ALL ELECTRICAL WORK SHALL BE IN ACCORDANCE WITH THE LATEST EDITIONS OF THE NATIONAL ELECTRICAL CODE (NEC) AND THE NATIONAL FIRE ALARM AND SIGNAL CODE (NFPA 72).

2. THE CONTRACTOR SHALL BE RESPONSIBLE FOR OBTAINING ALL NECESSARY PERMITS AND APPROVALS FROM THE LOCAL AUTHORITIES.

3. ALL MATERIALS AND WORKMANSHIP SHALL BE SUBJECT TO INSPECTION AND APPROVAL BY THE LOCAL AUTHORITIES.

4. THE CONTRACTOR SHALL MAINTAIN ACCESS TO ALL ADJACENT PROPERTIES AND UTILITIES AT ALL TIMES.

5. ALL ELECTRICAL WORK SHALL BE PROTECTED AGAINST OVERCURRENTS AND SHORT CIRCUITS.

6. ALL ELECTRICAL PANELS SHALL BE INSTALLED IN ACCORDANCE WITH THE NEC REQUIREMENTS FOR CLEARANCE AND PROTECTION.

7. ALL ELECTRICAL WIRING SHALL BE RUN IN ACCORDANCE WITH THE NEC REQUIREMENTS FOR CONDUIT AND CABLE SUPPORT.

8. ALL ELECTRICAL WORK SHALL BE TESTED AND DOCUMENTED IN ACCORDANCE WITH THE NEC REQUIREMENTS FOR TESTING AND RECORDS.

9. THE CONTRACTOR SHALL BE RESPONSIBLE FOR THE PROTECTION OF ALL EXISTING UTILITIES AND STRUCTURES.

10. ALL ELECTRICAL WORK SHALL BE COMPLETED WITHIN THE SPECIFIED TIME FRAME.



LEGEND AND ABBREVIATIONS

—	12 AWG
—	14 AWG
—	16 AWG
—	18 AWG
—	20 AWG
—	22 AWG
—	24 AWG
—	26 AWG
—	28 AWG
—	30 AWG
—	32 AWG
—	34 AWG
—	36 AWG
—	38 AWG
—	40 AWG
—	42 AWG
—	44 AWG
—	46 AWG
—	48 AWG
—	50 AWG
—	52 AWG
—	54 AWG
—	56 AWG
—	58 AWG
—	60 AWG
—	62 AWG
—	64 AWG
—	66 AWG
—	68 AWG
—	70 AWG
—	72 AWG
—	74 AWG
—	76 AWG
—	78 AWG
—	80 AWG
—	82 AWG
—	84 AWG
—	86 AWG
—	88 AWG
—	90 AWG
—	92 AWG
—	94 AWG
—	96 AWG
—	98 AWG
—	100 AWG

SAFETY ALERT
 Look Before You Overhead
 1-800-875-2727

DATE
 10/15/20

SCALE
 1/4" = 1'-0"

NEVER QUANTITIES

12 AWG	100
14 AWG	100
16 AWG	100
18 AWG	100
20 AWG	100
22 AWG	100
24 AWG	100
26 AWG	100
28 AWG	100
30 AWG	100
32 AWG	100
34 AWG	100
36 AWG	100
38 AWG	100
40 AWG	100
42 AWG	100
44 AWG	100
46 AWG	100
48 AWG	100
50 AWG	100
52 AWG	100
54 AWG	100
56 AWG	100
58 AWG	100
60 AWG	100
62 AWG	100
64 AWG	100
66 AWG	100
68 AWG	100
70 AWG	100
72 AWG	100
74 AWG	100
76 AWG	100
78 AWG	100
80 AWG	100
82 AWG	100
84 AWG	100
86 AWG	100
88 AWG	100
90 AWG	100
92 AWG	100
94 AWG	100
96 AWG	100
98 AWG	100
100 AWG	100

NEVER QUANTITIES

12 AWG	100
14 AWG	100
16 AWG	100
18 AWG	100
20 AWG	100
22 AWG	100
24 AWG	100
26 AWG	100
28 AWG	100
30 AWG	100
32 AWG	100
34 AWG	100
36 AWG	100
38 AWG	100
40 AWG	100
42 AWG	100
44 AWG	100
46 AWG	100
48 AWG	100
50 AWG	100
52 AWG	100
54 AWG	100
56 AWG	100
58 AWG	100
60 AWG	100
62 AWG	100
64 AWG	100
66 AWG	100
68 AWG	100
70 AWG	100
72 AWG	100
74 AWG	100
76 AWG	100
78 AWG	100
80 AWG	100
82 AWG	100
84 AWG	100
86 AWG	100
88 AWG	100
90 AWG	100
92 AWG	100
94 AWG	100
96 AWG	100
98 AWG	100
100 AWG	100

NEVER QUANTITIES

12 AWG	100
14 AWG	100
16 AWG	100
18 AWG	100
20 AWG	100
22 AWG	100
24 AWG	100
26 AWG	100
28 AWG	100
30 AWG	100
32 AWG	100
34 AWG	100
36 AWG	100
38 AWG	100
40 AWG	100
42 AWG	100
44 AWG	100
46 AWG	100
48 AWG	100
50 AWG	100
52 AWG	100
54 AWG	100
56 AWG	100
58 AWG	100
60 AWG	100
62 AWG	100
64 AWG	100
66 AWG	100
68 AWG	100
70 AWG	100
72 AWG	100
74 AWG	100
76 AWG	100
78 AWG	100
80 AWG	100
82 AWG	100
84 AWG	100
86 AWG	100
88 AWG	100
90 AWG	100
92 AWG	100
94 AWG	100
96 AWG	100
98 AWG	100
100 AWG	100

NEVER QUANTITIES

12 AWG	100
14 AWG	100
16 AWG	100
18 AWG	100
20 AWG	100
22 AWG	100
24 AWG	100
26 AWG	100
28 AWG	100
30 AWG	100
32 AWG	100
34 AWG	100
36 AWG	100
38 AWG	100
40 AWG	100
42 AWG	100
44 AWG	100
46 AWG	100
48 AWG	100
50 AWG	100
52 AWG	100
54 AWG	100
56 AWG	100
58 AWG	100
60 AWG	100
62 AWG	100
64 AWG	100
66 AWG	100
68 AWG	100
70 AWG	100
72 AWG	100
74 AWG	100
76 AWG	100
78 AWG	100
80 AWG	100
82 AWG	100
84 AWG	100
86 AWG	100
88 AWG	100
90 AWG	100
92 AWG	100
94 AWG	100
96 AWG	100
98 AWG	100
100 AWG	100

NEVER QUANTITIES

12 AWG	100
14 AWG	100
16 AWG	100
18 AWG	100
20 AWG	100
22 AWG	100
24 AWG	100
26 AWG	100
28 AWG	100
30 AWG	100
32 AWG	100
34 AWG	100
36 AWG	100
38 AWG	100
40 AWG	100
42 AWG	100
44 AWG	100
46 AWG	100
48 AWG	100
50 AWG	100
52 AWG	100
54 AWG	100
56 AWG	100
58 AWG	100
60 AWG	100
62 AWG	100
64 AWG	100
66 AWG	100
68 AWG	100
70 AWG	100
72 AWG	100
74 AWG	100
76 AWG	100
78 AWG	100
80 AWG	100
82 AWG	100
84 AWG	100
86 AWG	100
88 AWG	100
90 AWG	100
92 AWG	100
94 AWG	100
96 AWG	100
98 AWG	100
100 AWG	100

NEVER QUANTITIES

12 AWG	100
14 AWG	100
16 AWG	100
18 AWG	100
20 AWG	100
22 AWG	100
24 AWG	100
26 AWG	100
28 AWG	100
30 AWG	100
32 AWG	100
34 AWG	100
36 AWG	100
38 AWG	100
40 AWG	100
42 AWG	100
44 AWG	100
46 AWG	100
48 AWG	100
50 AWG	100
52 AWG	100
54 AWG	100
56 AWG	100
58 AWG	100
60 AWG	100
62 AWG	100
64 AWG	100
66 AWG	100
68 AWG	100
70 AWG	100
72 AWG	100
74 AWG	100
76 AWG	100
78 AWG	100
80 AWG	100
82 AWG	100
84 AWG	100
86 AWG	100
88 AWG	100
90 AWG	100
92 AWG	100
94 AWG	100
96 AWG	100
98 AWG	100
100 AWG	100

Signature

DATE
 10/15/20

SCALE
 1/4" = 1'-0"

PROJECT NO. 10/15/20

CLIENT NAME ABC COMPANY

PROJECT ADDRESS 123 MAIN ST, ANYTOWN, CA 90210

DATE 10/15/20

SCALE 1/4" = 1'-0"

PROJECT NO. 10/15/20

CLIENT NAME ABC COMPANY

PROJECT ADDRESS 123 MAIN ST, ANYTOWN, CA 90210

DATE 10/15/20

SCALE 1/4" = 1'-0"