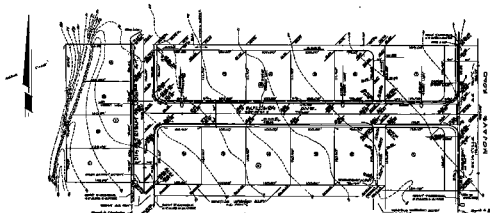




# EAST-PARK INDUSTRIAL SUBDIVISION UNIT NO. 2

A PORTION OF THE 47<sup>th</sup> AND 56<sup>th</sup> TOWNSHIPS, W.D.S. & M.  
CITY OF LOS VEGAS



APPROVED:  
[Signatures]  
DATE: 10-7-46

- ### NOTES & SPECIFICATIONS
1. The lots shown on this plan are to be subdivided into lots of the following dimensions:  
a. 100' x 100'  
b. 100' x 150'  
c. 100' x 200'
2. The lots shown on this plan are to be subdivided into lots of the following dimensions:  
a. 100' x 100'  
b. 100' x 150'  
c. 100' x 200'
3. The lots shown on this plan are to be subdivided into lots of the following dimensions:  
a. 100' x 100'  
b. 100' x 150'  
c. 100' x 200'
4. The lots shown on this plan are to be subdivided into lots of the following dimensions:  
a. 100' x 100'  
b. 100' x 150'  
c. 100' x 200'
5. The lots shown on this plan are to be subdivided into lots of the following dimensions:  
a. 100' x 100'  
b. 100' x 150'  
c. 100' x 200'

### LEGEND

Water Main  
Sewer Main  
Gas Main  
Electric Line  
Telephone Line  
Fire Hydrant  
Manhole  
Valve  
Curb  
Street Light  
Sign

### STREET LIGHTS

STREET LIGHTS SHALL BE PROVIDED AT THE INTERSECTIONS OF ALL STREETS AND AT THE MIDPOINT OF EACH STREET.

### STREETS

STREETS SHALL BE 40 FEET WIDE AND SHALL BE PAVED WITH ASPHALT.

### UTILITIES

UTILITIES SHALL BE PROVIDED AT THE INTERSECTIONS OF ALL STREETS AND AT THE MIDPOINT OF EACH STREET.

1. The lots shown on this plan are to be subdivided into lots of the following dimensions:  
a. 100' x 100'  
b. 100' x 150'  
c. 100' x 200'

2. The lots shown on this plan are to be subdivided into lots of the following dimensions:  
a. 100' x 100'  
b. 100' x 150'  
c. 100' x 200'

3. The lots shown on this plan are to be subdivided into lots of the following dimensions:  
a. 100' x 100'  
b. 100' x 150'  
c. 100' x 200'

4. The lots shown on this plan are to be subdivided into lots of the following dimensions:  
a. 100' x 100'  
b. 100' x 150'  
c. 100' x 200'

5. The lots shown on this plan are to be subdivided into lots of the following dimensions:  
a. 100' x 100'  
b. 100' x 150'  
c. 100' x 200'



[Signature]  
[Seal]

10-7-46

APPROVED: [Signatures]

DATE: 10-7-46

RECORDING FEE: \$10.00

STAMP: [Seal]

RECORDING OFFICE: [Text]