

LEGEND

FINISH GROUND ELEV	
EXIST FINISH GROUND	
FLOW LINE ELEV	
EXIST FLOW LINE	
TOP BACK OF CURB	
EXIST TOP BACK OF CURB	
NATURAL GROUND	
FINISH GROUND CONTOUR 1' INTERVAL	
FINISH GROUND CONTOUR 5' INTERVAL	
EXIST GROUND CONTOUR 1' INTERVAL	
EXIST GROUND CONTOUR 5' INTERVAL	
FINISH FLOOR ELEV	FF 10.2
FINISH PAD ELEV	10.0
RATE OF SLOPE	1%
DIRECTION OF DRAINAGE	
L' TYPE CURB & GUTTER	
6" CURB	
EXIST CURB	
STOPPER DRAIN	
EXIST STOPPER DRAIN	
SAVOUT LINE	

ABBREVIATIONS

FG	FINISH GRADE
TBC	TOP BACK OF CURB
CB	GRADE BREAK
LP/HF	LOW/HIGH POINT
TV	TOP OF WALL
TF	TOP OF FOOTING
BFF	BOTTOM BLDG FOOTING
BWF	BOTTOM FLOOR WALL FOOTING
FG @ BLDG	FG @ BUILDING
FG @ WALL	FG @ WALL
FF	FINISH FLOOR
FL	FLOW LINE
NG	NATURAL GROUND
(TF)	EXIST TOP OF FOOTING
(TV)	EXIST TOP OF WALL
SWR	SEWER
WTR	WATER
STRN	STRIP
CO	CLEANOUT

NOTE:
CornerStone Engineering Incorporated ASSUMES NO RESPONSIBILITY FOR EXISTING UTILITY LOCATIONS, SHOWN OR NOT SHOWN. THE UTILITIES SHOWN ON THIS DRAWING HAVE BEEN PLOTTED FROM RECORD INFORMATION AND ARE FOR THE CONVENIENCE OF THE CONTRACTOR ONLY. IT IS THE CONTRACTOR'S RESPONSIBILITY TO FIELD VERIFY THE LOCATION AND DEPTH OF ALL RELEVANT UTILITIES PRIOR TO COMMENCEMENT OF ANY CONSTRUCTION. IF A CONFLICT OR DISCREPANCY IS DISCOVERED THE CONTRACTOR IS TO NOTIFY THE ENGINEER OR WORK IN WRITING, IMMEDIATELY.

NOTICE!
EXISTING UTILITIES ARE SHOWN ON PLANS FOR THE CONVENIENCE OF THE CONTRACTOR ONLY. THE CONTRACTOR IS RESPONSIBLE FOR THE PROTECTION OF ALL UTILITIES. THE ENGINEER BEARS NO RESPONSIBILITY FOR UTILITIES NOT SHOWN OR SHOWN INCORRECTLY.

Call BEFORE YOU Dig
1-800-227-2800
UNDERGROUND SERVICE (USA)

BENCHMARK
CITY OF LAS VEGAS BENCHMARK 11V0011NEE
RIVET & PLATE IN TOP OF CURB, SOUTHWEST RETURN OF ALEXANDER ROAD & HAVEMOCK STREET
NAVD 88 ELEVATION = 2273.758 FEET
693.0427 METERS

LEGAL DESCRIPTION
A PORTION OF THE NORTH (N 1/2) OF THE NORTHEAST QUARTER (NE 1/4) OF THE NORTHEAST QUARTER (NE 1/4) OF SECTION 11, TOWNSHIP 20 SOUTH, RANGE 60 EAST, P.D.B.M.1
RECORDED IN BOOK 60 OF PLATS, PAGE 127 IN THE OFFICE OF THE COUNTY RECORDER OF CLARK COUNTY, NEVADA.

BASIS OF BEARING
THE BASIS OF BEARING IS THE EAST LINE OF THE NE 1/4 OF SEC. 11 T. 20 S., R. 60 E., P.D.M., CLARK COUNTY, NEVADA AS SHOWN ON RECORD OF SURVEY IN THE COUNTY RECORDER'S OFFICE IN FILE 15, PAGE 63. SAID LINE BEARS: SOUTH 01° 43' 15" WEST.

REVISION	REVISION DATE	APPROVAL DATE	BY	COMMENTS
2	9/29/98	10/9/98	KOT	REVISED COVERED PARKING

SHRINKAGE: PER SOILS REPORT, IT IS ANTICIPATED THAT FILL SHRINKAGE WILL BE 20% USING 20% SHRINKAGE THE ADJUSTED EARTHWORK QUANTITIES ARE: CUT 21,436 CY, FILL 14,906 CY, EXPORT 7,000 CY

SUBSIDENCE: PER SOILS REPORT, IT IS ANTICIPATED THAT THE SITE WILL SUBSIDE APPROX. 0.15" USING 0.15" INCREASES THE REPORT AMOUNT = 3,146 CY

ADJUSTED EARTHWORK QUANTITIES FOR SHRINKAGE & SUBSIDENCE ARE: CUT 21,436 CY, FILL 17,552 CY, EXPORT 3,884 CY

I CERTIFY THAT THIS GRADING PLAN CONFORMS TO THE APPROVED HYDROLOGY STUDY FOR THIS SITE ON FILE AT THE CITY OF LAS VEGAS.

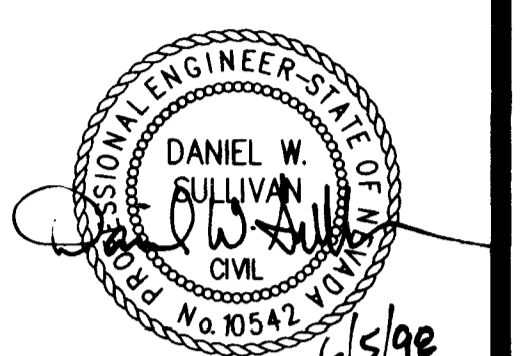
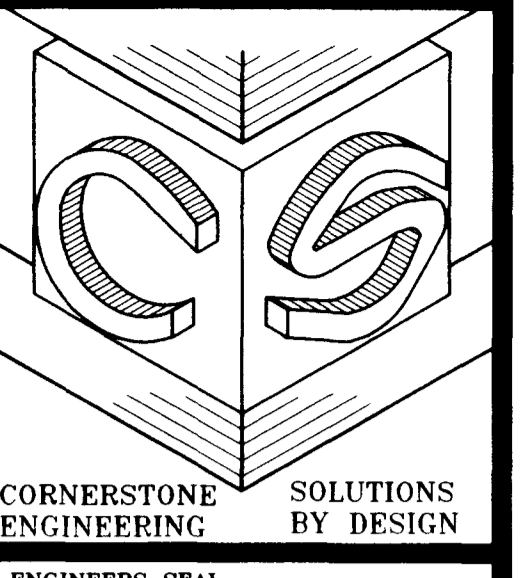
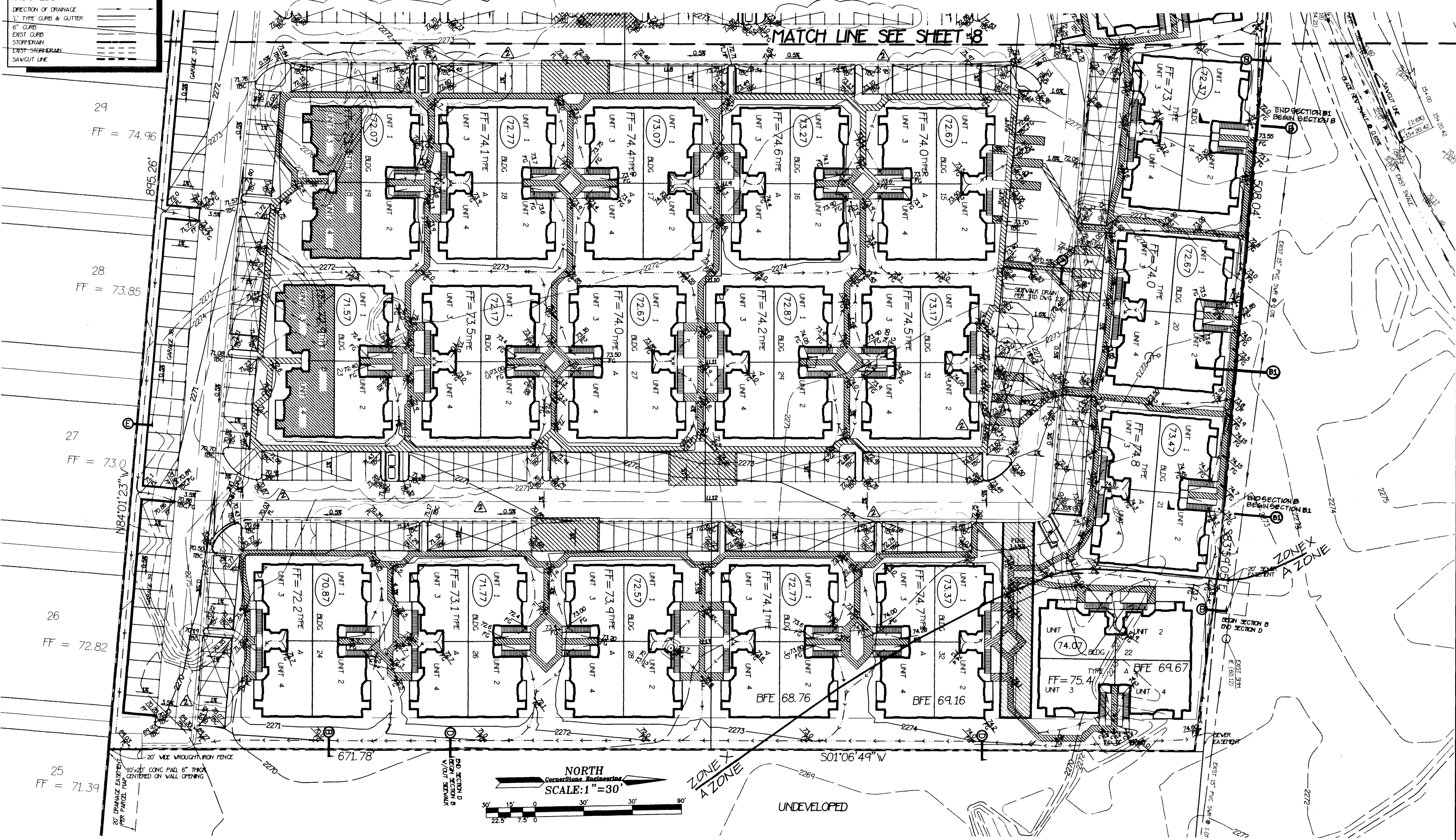
Daniel W. Sullivan 6/5/98
DANIEL W. SULLIVAN DATE

GRADING QUANTITIES
CUT: 21,436 CY FILL: 12,005 CY
EXPORT: 9,431 CY
THIS QUANTITY IS ADJUSTED FOR 3" ASPHALT AND BASE SECTION, AND A 6" SECTION FOR THE BUILDING

FOR GRADING PLAN DETAILS SEE SHEET 10

ELEVATION EQUATION
ELEVATION SHOWN + 2000 FEET
ADJUST TO BENCHMARK DATUM SHOWN ON COVER SHEET

MATCH LINE SEE SHEET 8

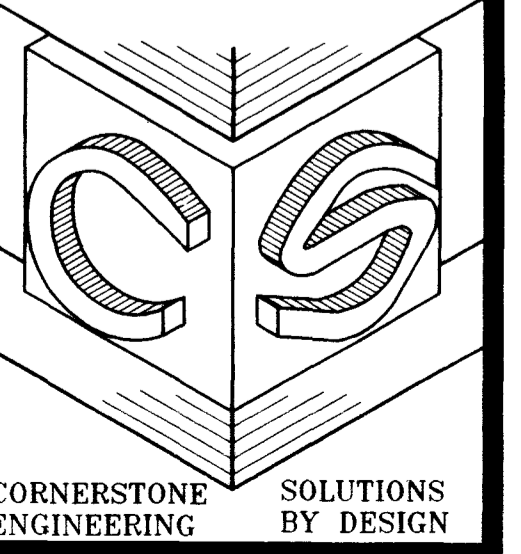


CornerStone Engineering
3690 SOUTH EASTERN AVE. S 102
LAS VEGAS, NV 89109
(702)731-4711 FAX(702)731-4788

GRADING PLAN
EAST HALF VIEW
DESERT PINES CONDOMINIUMS
CITY OF LAS VEGAS

JOB NUMBER 163-00
DATE 6-5-98
APPROVAL DATE
FILENAME 163-GRD.DWG
XREF FILES 163-MST.DWG
XREF FILES 163-TOP.DWG

SHEET 9 OF 12



LWMD #21503

