

DESERT PINES CONDOMINIUMS

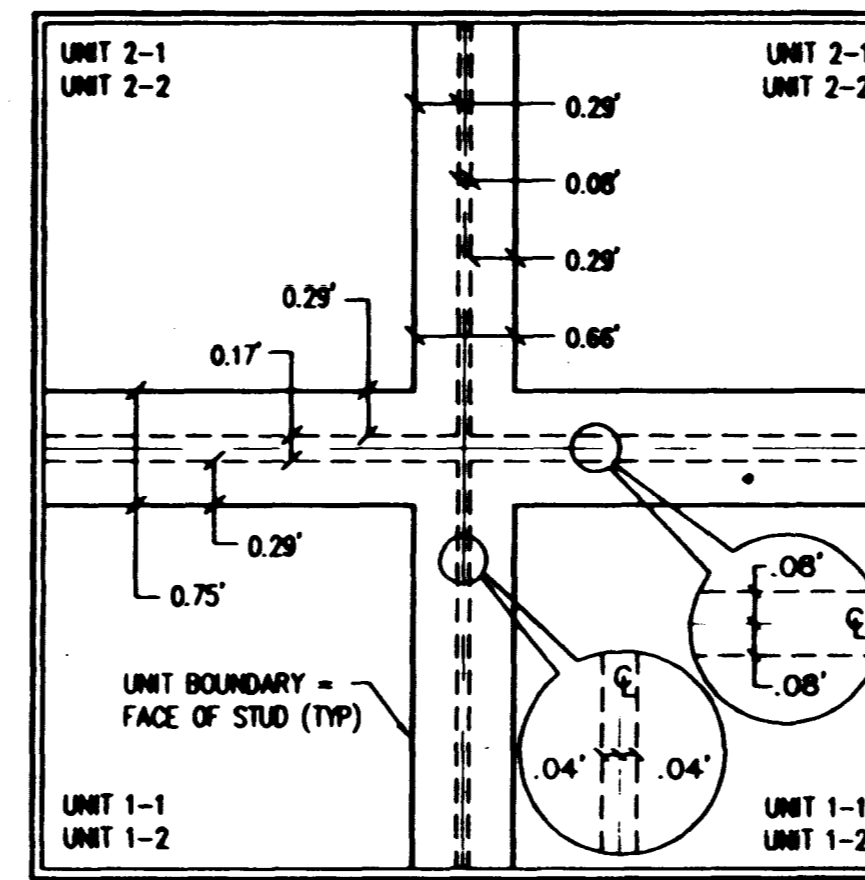
(A CONDOMINIUM DEVELOPMENT AND COMMON INTEREST COMMUNITY)

UNIT II

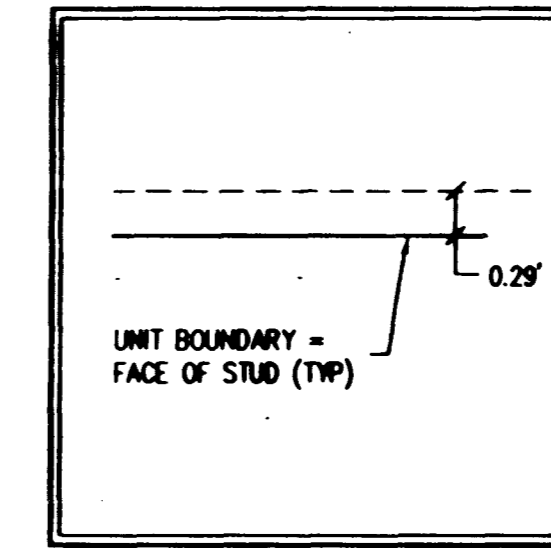
FINAL MAP
 A PORTION OF PARCEL I AS SHOWN BY MAP THEREOF IN FILE 91, PAGE 93 OF PARCEL MAPS, CLARK COUNTY RECORDERS OFFICE, ALSO BEING A PORTION OF THE NORTH HALF (N 1/2) OF THE NORTHEAST QUARTER (NE 1/4) OF THE NORTHEAST QUARTER (NE 1/4) OF SECTION 11, T. 20 S., R. 60 E., M.D.M.
 CITY OF LAS VEGAS CLARK COUNTY NEVADA

NOTES

- 1.) THE COMMON ELEMENT OF THIS CONDOMINIUM PLAN IS THE LAND AND REAL PROPERTY INCLUDED WITHIN THE LIMITS OF THE PROJECT AS DEFINED HEREIN, EXCEPTING THEREFROM THE UNITS SHOWN HEREIN AND DEFINED BY THE N.R.S. CHAPTER 116.11039, AND/OR AS FURTHER DEFINED IN THE DECLARATION AS PROVIDED FOR IN N.R.S. CHAPTER 116.2105.
- 2.) PORTIONS OF THE COMMON ELEMENT ARE HEREBY SET ASIDE AND ALLOCATED FOR THE LIMITED USE OF CERTAIN UNITS AS SHOWN HEREON AND AS SET FORTH IN THE "DECLARATION AND RESTRICTIONS" TO BE HERINAFTER RECORDED AND SUCH AREAS SHALL BE KNOWN AS "LIMITED COMMON ELEMENTS" AND SUCH LIMITED COMMON ELEMENTS SHALL BE EASEMENTS APPURTENANT TO SAID UNITS
- 3.) EACH AREA DEPICTED WITHIN THIS MAP BEARING ONE OF THE FOLLOWING DESIGNATIONS ARE "LIMITED COMMON ELEMENTS":
 PATIO
 BALCONY
 GARAGE
 WATER HEATER CLOSET (W/H)
- 4.) THESE LIMITED COMMON ELEMENTS ARE ASSIGNED TO THE ADJACENT UNIT(S) WHICH HAVE THE SAME NUMERICAL DESIGNATION, SUBJECT TO THE CONDITIONS SET FORTH IN THE DECLARATION OF RESTRICTIONS AS HERINAFTER RECORDED. FOR OWNERSHIP PURPOSES, THE UNIT IS DEFINED BY THE N.R.S. CHAPTER 116.11039.
- 5.) FOR LEGAL DESCRIPTION PURPOSES, THE FOLLOWING IS AN EXAMPLE OF A DWELLING UNIT DESCRIPTION.
 BLDG 1
 UNIT 1001
- 6.) TOTAL NUMBER OF UNITS: 112



DETAIL 'A'
NTS

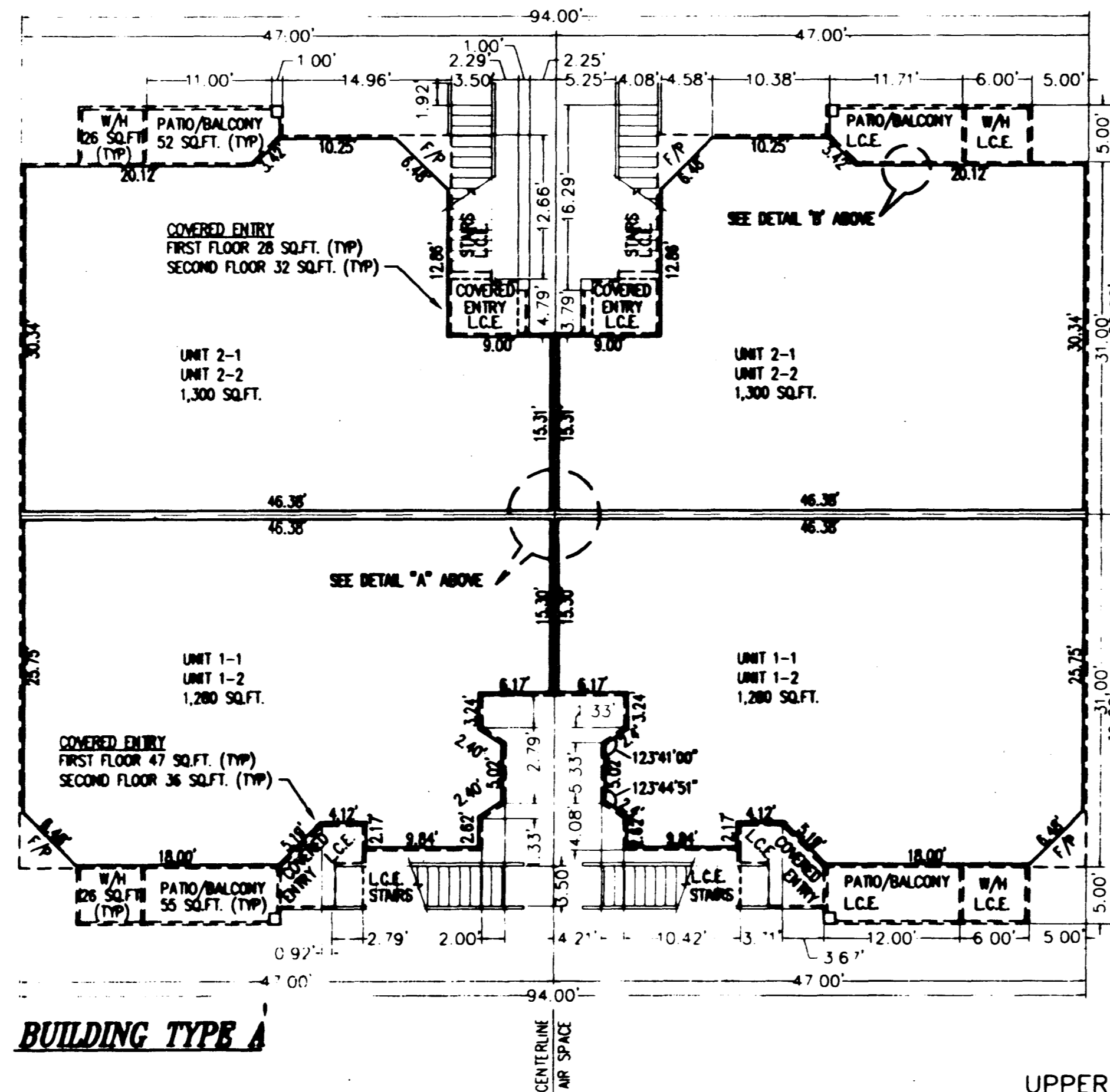
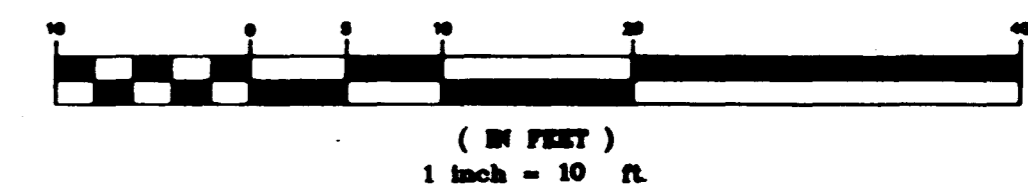


DETAIL 'B'
NTS

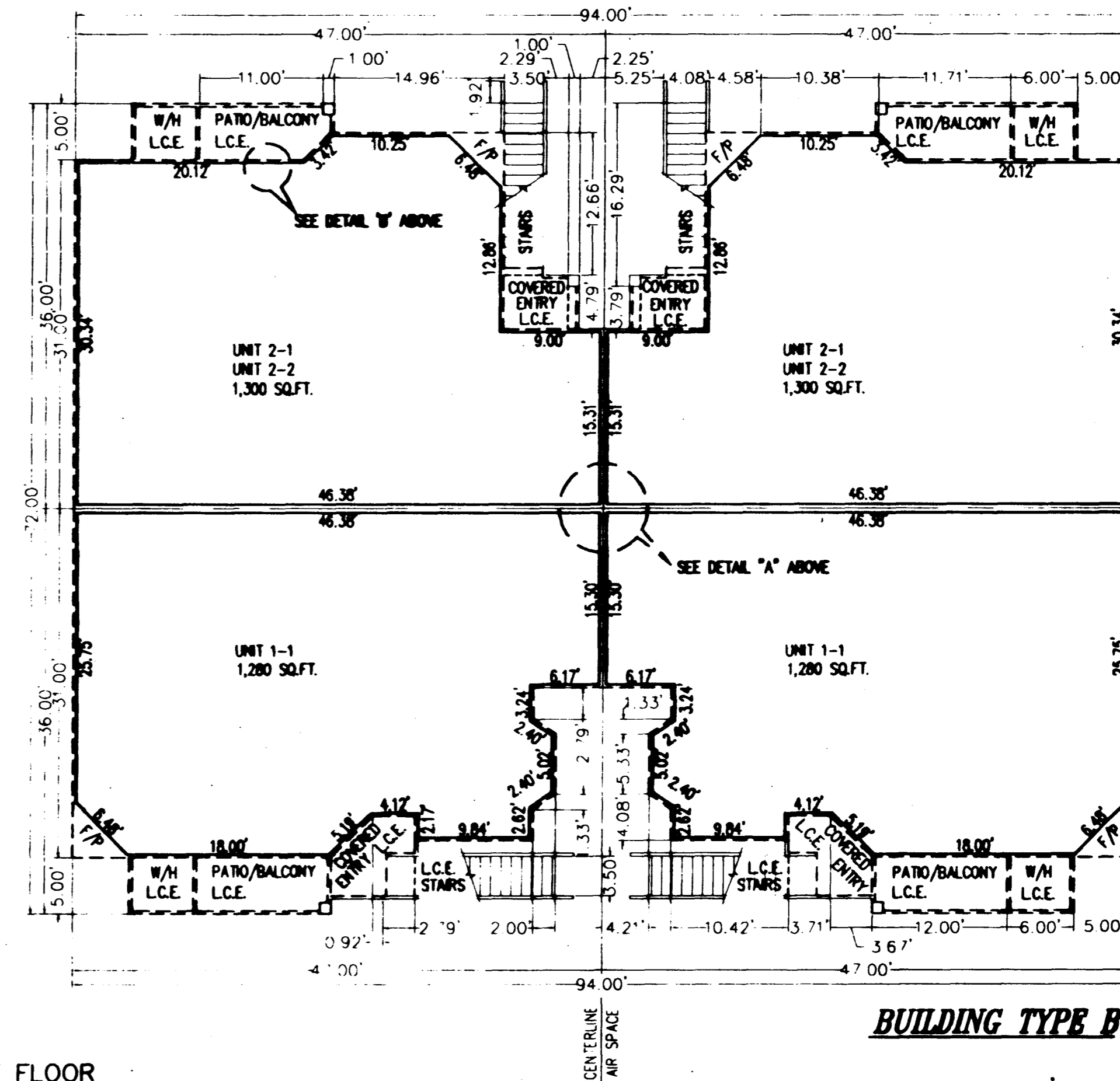
LEGEND

- FACE OF STUD
- EXTERIOR WALL AT FACE OF STUD
- FIRE PLACE
- WATER HEATER CLOSET
- LOWER UNIT COVERED ENTRY
- UNIT TYPE / FIRST FLOOR
- UNIT TYPE / SECOND FLOOR
- LIMITED COMMON ELEMENT

GRAPHIC SCALE



BUILDING TYPE A



BUILDING TYPE B

NOTE
 UPPER AND LOWER UNIT FLOOR PLANS ARE IDENTICAL

JW SLIGAR, INC.
 LAND SURVEYING
 Mapping • Consulting
 820 S. Valley View Boulevard
 Las Vegas, Nevada 89107
 870-7333 Fax 870-7613

K:\VSI\PROJ\95550\01\DWG\UNIT2\PLAN.dwg Thu Sep 17 14:41:48 1998

DESERT PINES CONDOMINIUMS

(A CONDOMINIUM DEVELOPMENT AND COMMON INTEREST COMMUNITY)

UNIT II

A PORTION OF PARCEL 1 AS SHOWN ON THE MAP OF THE CITY OF LAS VEGAS, CLARK COUNTY, NEVADA, AND BEING A PORTION OF THE SEVERAL LOTS OF SAID PARCEL 1, AS SHOWN ON THE MAP OF THE CITY OF LAS VEGAS, CLARK COUNTY, NEVADA.

CITY OF LAS VEGAS CLARK COUNTY NEVADA

- NOTES**
1. ALL DIMENSIONS ARE TO FACE UNLESS OTHERWISE NOTED.
 2. THE AREA OF THE COMMON INTERESTS AND AREAS OF THE UNIT ARE SHOWN ON THE MAP OF THE CITY OF LAS VEGAS, CLARK COUNTY, NEVADA, AND BEING A PORTION OF THE SEVERAL LOTS OF SAID PARCEL 1, AS SHOWN ON THE MAP OF THE CITY OF LAS VEGAS, CLARK COUNTY, NEVADA.
 3. THE AREA OF THE COMMON INTERESTS AND AREAS OF THE UNIT ARE SHOWN ON THE MAP OF THE CITY OF LAS VEGAS, CLARK COUNTY, NEVADA, AND BEING A PORTION OF THE SEVERAL LOTS OF SAID PARCEL 1, AS SHOWN ON THE MAP OF THE CITY OF LAS VEGAS, CLARK COUNTY, NEVADA.
 4. THE AREA OF THE COMMON INTERESTS AND AREAS OF THE UNIT ARE SHOWN ON THE MAP OF THE CITY OF LAS VEGAS, CLARK COUNTY, NEVADA, AND BEING A PORTION OF THE SEVERAL LOTS OF SAID PARCEL 1, AS SHOWN ON THE MAP OF THE CITY OF LAS VEGAS, CLARK COUNTY, NEVADA.
 5. THE AREA OF THE COMMON INTERESTS AND AREAS OF THE UNIT ARE SHOWN ON THE MAP OF THE CITY OF LAS VEGAS, CLARK COUNTY, NEVADA, AND BEING A PORTION OF THE SEVERAL LOTS OF SAID PARCEL 1, AS SHOWN ON THE MAP OF THE CITY OF LAS VEGAS, CLARK COUNTY, NEVADA.
 6. THE AREA OF THE COMMON INTERESTS AND AREAS OF THE UNIT ARE SHOWN ON THE MAP OF THE CITY OF LAS VEGAS, CLARK COUNTY, NEVADA, AND BEING A PORTION OF THE SEVERAL LOTS OF SAID PARCEL 1, AS SHOWN ON THE MAP OF THE CITY OF LAS VEGAS, CLARK COUNTY, NEVADA.

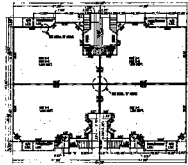
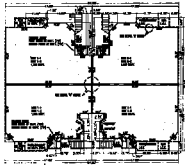


FIGURE 5
UPPER AND LOWER UNIT FLOOR PLANS ARE CORRELATIVE

JW SLIGAR, INC.
LAND SURVEYING
PLANNING & CONSULTING
200 N. Main Street, Suite 200
Las Vegas, NV 89101
Tel: 702.735.1111

DATE: 11/12/01
BY: JWS/ML