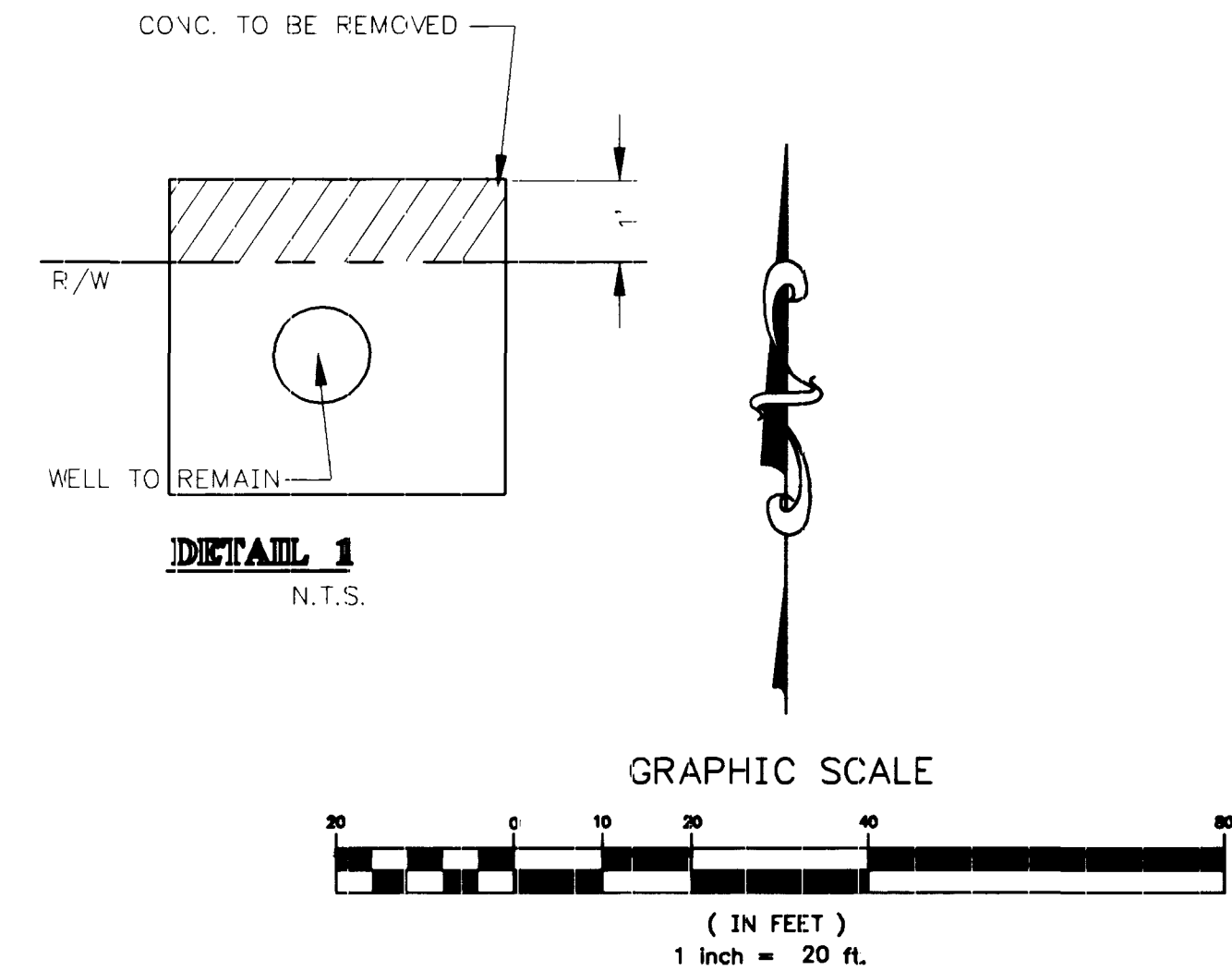
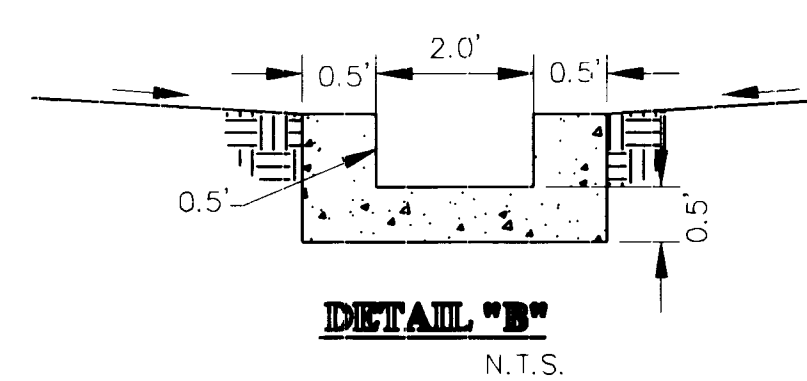
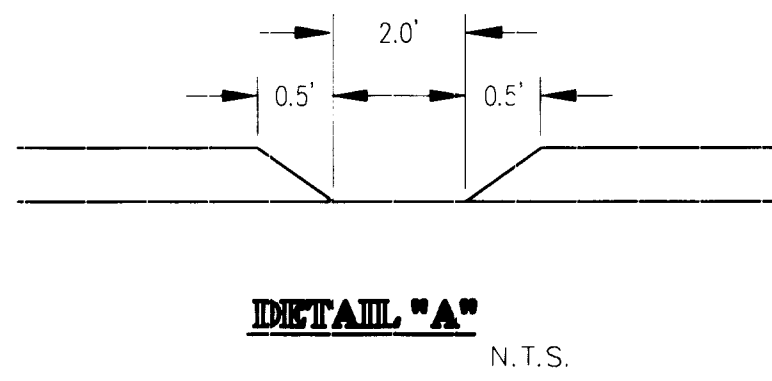


**CONSTRUCTION NOTES:**

- 1 CONSTRUCT 8" VALLEY GUTTER PER C.C.A. STD. DWG. NO.228
- 2 CONSTRUCT SIDEWALK RAMP PER C.C.A. STD. DWG. NO.235 CASE I
- 3 CONSTRUCT SIDEWALK PER C.C.A. STD. DWG. NO. 234
- 4 CONSTRUCT PAVEMENT SECTION PER SOILS REPORT
- 5 CONSTRUCT TRASH ENCLOSURE PER ARCHITECTURAL PLANS
- 6 CONSTRUCT TYPE "A" CURB PER C.C.A. STD. DWG. NO.219
- 7 CONSTRUCT TACK-ON CURB PER C.C.A. STD. DWG. NO.220
- 8 CONSTRUCT 2' WIDE OPENING IN CURB FOR DRAINAGE PER DETAIL "A" ON THIS SHEET AND CONST. CHANNEL PER DETAIL "B"
- 9 CONSTRUCT HANDICAP RAMP (ON SITE)
- 10 OMIT MASONRY BLOCK AT FINISHED GRADE FOR DRAINAGE (24"x16" OPENING MIN)
- 11 CONSTRUCT SIDEWALK UNDER DRAIN PER U.S.D. 236 (PER FLOOD CONTROL MIN. BLOCK WALL OPENING IS 24"x16")
- 12 CONSTRUCT "L" TYPE CURB & GUTTER PER C.C.A. STD. DWG. NO.216.

**LEGEND:**

- INDICATES % OF SLOPE OR FLOW X.X%
- INDICATES GRADE ELEVATION XX.XX
- INDICATES EXISTING GRADE ELEVATION (XX.XX)
- TC = TOP OF CURB
- FG = FINISHED GRADE
- EG = EXISTING GRADE
- FL = FLOW LINE
- FS = FINISHED SURFACE
- C.C.A. STD. = CLARK COUNTY AREA STANDARD



**LEGAL DESCRIPTION**

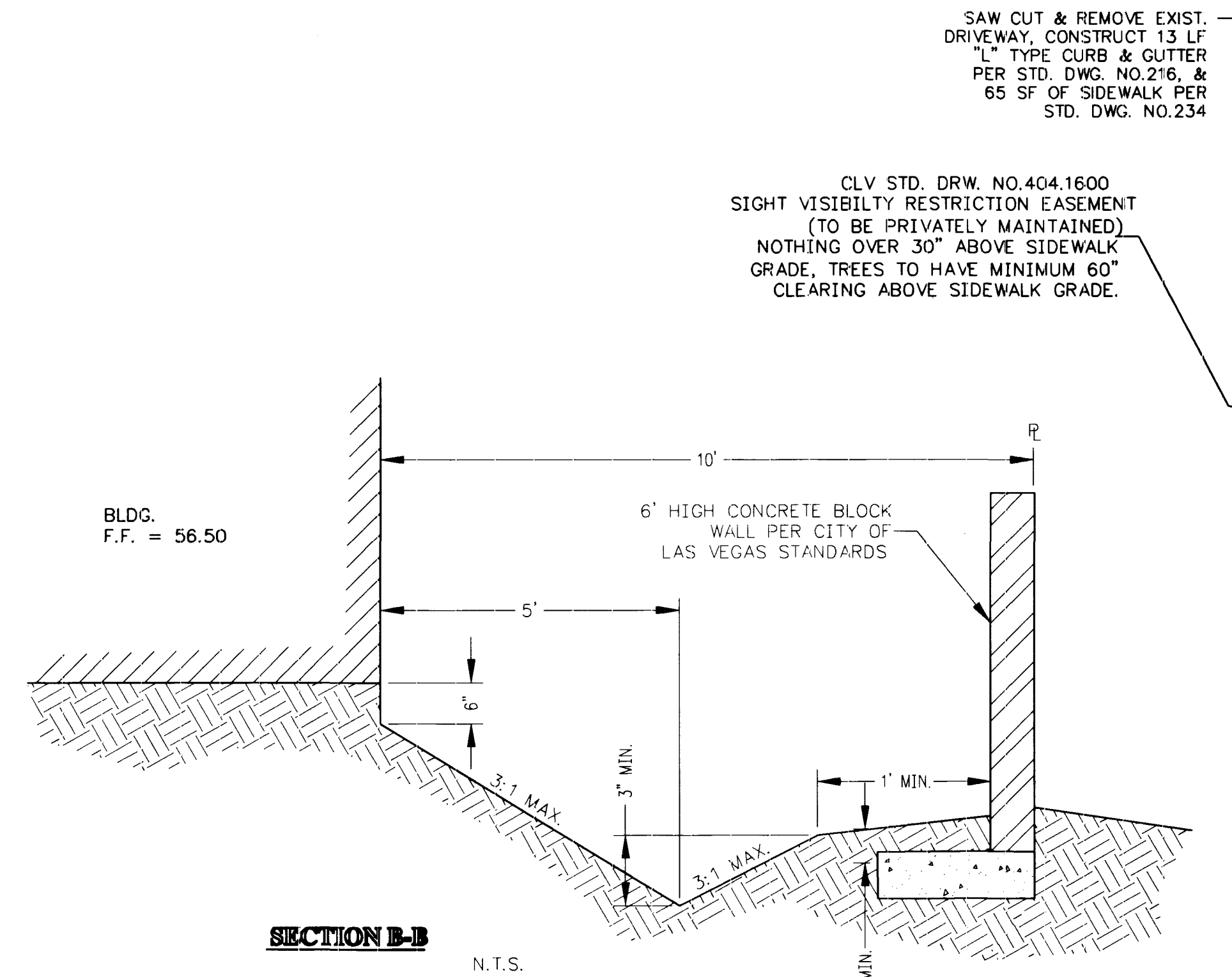
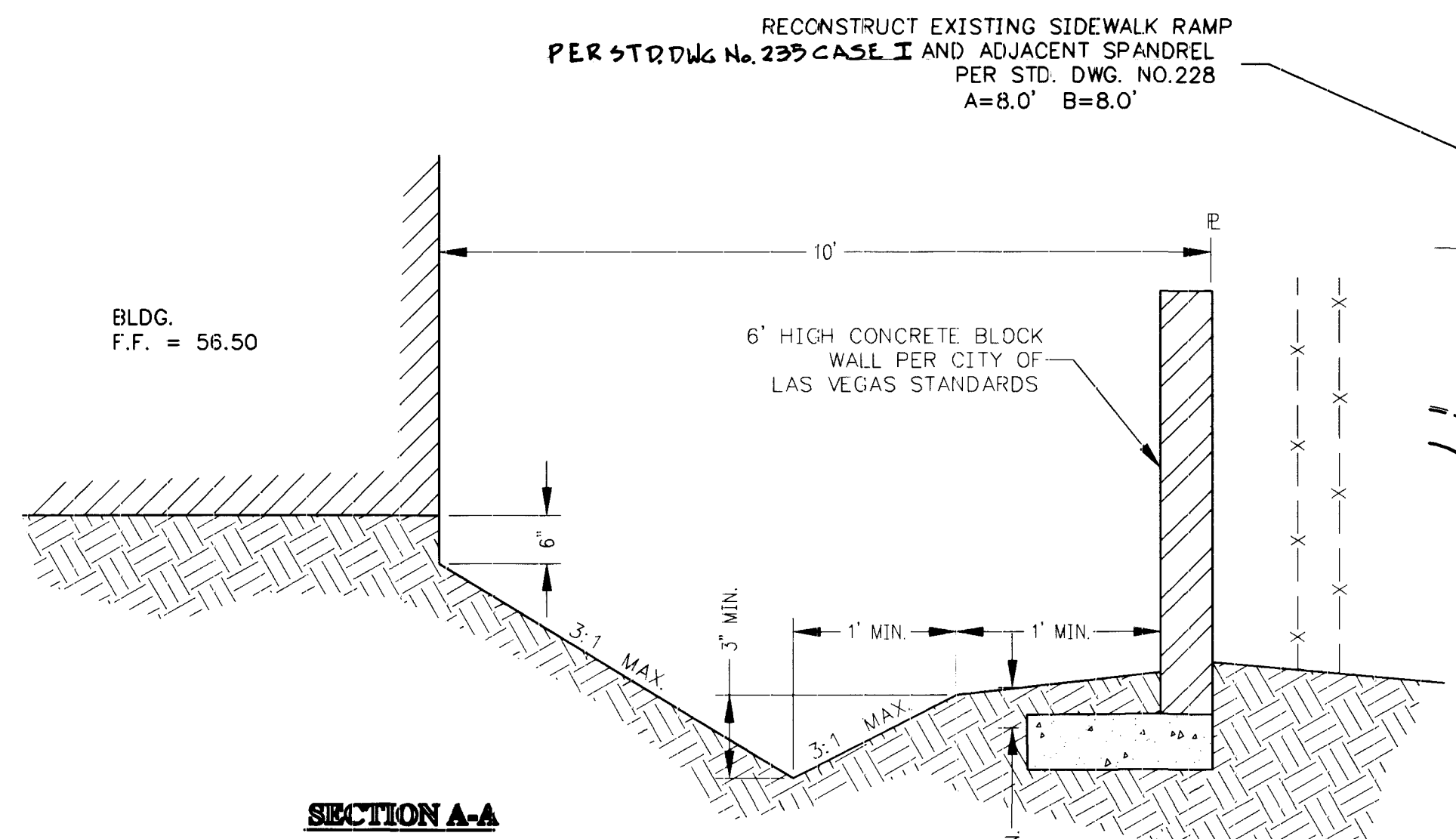
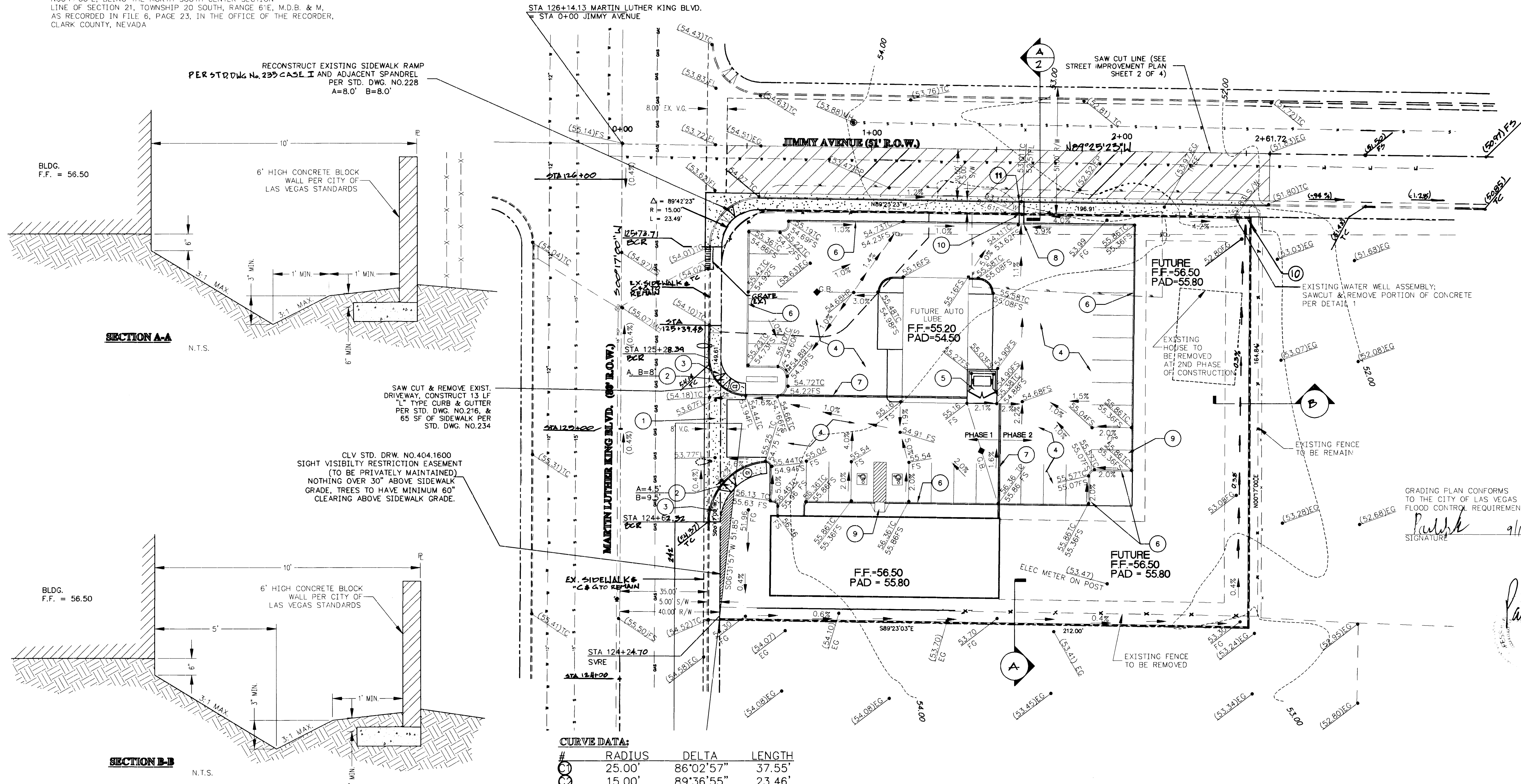
A PORTION OF THE SOUTH HALF (S1/2) OF THE NORTH HALF (N1/2) OF THE SOUTHWEST QUARTER (SW1/4) OF THE NORTH-WEST QUARTER (NW1/4) OF THE SOUTHEAST QUARTER (SE1/4) OF SECTION 21, TOWNSHIP 20 SOUTH, RANGE 61 EAST, M.D.M., IN THE CITY OF LAS VEGAS, COUNTY OF CLARK, STATE OF NEVADA.

**BENCHMARK:**

CITY OF LAS VEGAS BENCH MARK NO.2LV0121C4, A RIVET PLATE IN THE TOP OF CURB AT THE NORTHEAST CORNER OF MARTIN LUTHER KING BLVD. & LAKEHEAD BLVD. ELEVATION = 2052.69 (625.66M) THE (NAVD88)

**BASIS OF BEARING**

N00°17'00"E, BEING THE NORTH SOUTH CENTER SECTION LINE OF SECTION 21, TOWNSHIP 20 SOUTH, RANGE 61E, M.D.B. & M, AS RECORDED IN FILE 6, PAGE 23, IN THE OFFICE OF THE RECORDER, CLARK COUNTY, NEVADA



**CURVE DATA:**

#	RADIUS	DELTA	LENGTH
1	25.00'	86°02'57"	37.55'
2	15.00'	89°36'55"	23.46'

**ACE ENGINEERING**  
 3520 N. BUFFALO DR.  
 SUIT 106, LAS VEGAS, NV 89128  
 PHONE: (702) 596-5118, FAX (702) 596-5101

**GRADING PLAN**  
 D & L PLAZA  
 1840 NORTH MARTIN LUTHER KING BLVD.

GRADING PLAN CONFORMS TO THE CITY OF LAS VEGAS FLOOD CONTROL REQUIREMENTS  
 SIGNATURE: [Signature] DATE: 9/12/17

DATE: 6/21/17  
 JOB #: 96-111  
 DRAWN BY: C.C.

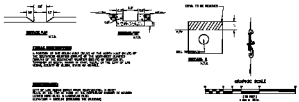
**C3**  
 SHEET  
 3 OF 4

1602

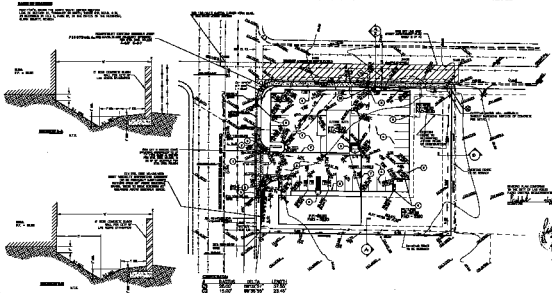
107-V2739

- 1. CHECKED BY: [Signature]
- 2. APPROVED BY: [Signature]
- 3. DATE: [Date]
- 4. PROJECT NO. [Number]
- 5. SHEET NO. [Number]
- 6. TOTAL SHEETS [Number]
- 7. [Text]
- 8. [Text]
- 9. [Text]
- 10. [Text]
- 11. [Text]
- 12. [Text]
- 13. [Text]
- 14. [Text]
- 15. [Text]
- 16. [Text]
- 17. [Text]
- 18. [Text]
- 19. [Text]
- 20. [Text]
- 21. [Text]
- 22. [Text]
- 23. [Text]
- 24. [Text]
- 25. [Text]
- 26. [Text]
- 27. [Text]
- 28. [Text]
- 29. [Text]
- 30. [Text]
- 31. [Text]
- 32. [Text]
- 33. [Text]
- 34. [Text]
- 35. [Text]
- 36. [Text]
- 37. [Text]
- 38. [Text]
- 39. [Text]
- 40. [Text]
- 41. [Text]
- 42. [Text]
- 43. [Text]
- 44. [Text]
- 45. [Text]
- 46. [Text]
- 47. [Text]
- 48. [Text]
- 49. [Text]
- 50. [Text]

SECTION 1 OF 2  
 SECTION 2 OF 2  
 SECTION 3 OF 2  
 SECTION 4 OF 2  
 SECTION 5 OF 2  
 SECTION 6 OF 2  
 SECTION 7 OF 2  
 SECTION 8 OF 2  
 SECTION 9 OF 2  
 SECTION 10 OF 2  
 SECTION 11 OF 2  
 SECTION 12 OF 2  
 SECTION 13 OF 2  
 SECTION 14 OF 2  
 SECTION 15 OF 2  
 SECTION 16 OF 2  
 SECTION 17 OF 2  
 SECTION 18 OF 2  
 SECTION 19 OF 2  
 SECTION 20 OF 2  
 SECTION 21 OF 2  
 SECTION 22 OF 2  
 SECTION 23 OF 2  
 SECTION 24 OF 2  
 SECTION 25 OF 2  
 SECTION 26 OF 2  
 SECTION 27 OF 2  
 SECTION 28 OF 2  
 SECTION 29 OF 2  
 SECTION 30 OF 2  
 SECTION 31 OF 2  
 SECTION 32 OF 2  
 SECTION 33 OF 2  
 SECTION 34 OF 2  
 SECTION 35 OF 2  
 SECTION 36 OF 2  
 SECTION 37 OF 2  
 SECTION 38 OF 2  
 SECTION 39 OF 2  
 SECTION 40 OF 2  
 SECTION 41 OF 2  
 SECTION 42 OF 2  
 SECTION 43 OF 2  
 SECTION 44 OF 2  
 SECTION 45 OF 2  
 SECTION 46 OF 2  
 SECTION 47 OF 2  
 SECTION 48 OF 2  
 SECTION 49 OF 2  
 SECTION 50 OF 2



SECTION 1 OF 2  
 SECTION 2 OF 2  
 SECTION 3 OF 2  
 SECTION 4 OF 2  
 SECTION 5 OF 2  
 SECTION 6 OF 2  
 SECTION 7 OF 2  
 SECTION 8 OF 2  
 SECTION 9 OF 2  
 SECTION 10 OF 2  
 SECTION 11 OF 2  
 SECTION 12 OF 2  
 SECTION 13 OF 2  
 SECTION 14 OF 2  
 SECTION 15 OF 2  
 SECTION 16 OF 2  
 SECTION 17 OF 2  
 SECTION 18 OF 2  
 SECTION 19 OF 2  
 SECTION 20 OF 2  
 SECTION 21 OF 2  
 SECTION 22 OF 2  
 SECTION 23 OF 2  
 SECTION 24 OF 2  
 SECTION 25 OF 2  
 SECTION 26 OF 2  
 SECTION 27 OF 2  
 SECTION 28 OF 2  
 SECTION 29 OF 2  
 SECTION 30 OF 2  
 SECTION 31 OF 2  
 SECTION 32 OF 2  
 SECTION 33 OF 2  
 SECTION 34 OF 2  
 SECTION 35 OF 2  
 SECTION 36 OF 2  
 SECTION 37 OF 2  
 SECTION 38 OF 2  
 SECTION 39 OF 2  
 SECTION 40 OF 2  
 SECTION 41 OF 2  
 SECTION 42 OF 2  
 SECTION 43 OF 2  
 SECTION 44 OF 2  
 SECTION 45 OF 2  
 SECTION 46 OF 2  
 SECTION 47 OF 2  
 SECTION 48 OF 2  
 SECTION 49 OF 2  
 SECTION 50 OF 2



**ACE ENGINEERING**  
 1000 S. HAYWARD BL.  
 SAN LUIS OBISPO, CA 95060  
 PHONE: (805) 435-1100 FAX: (805) 435-1101

**GRADING PLAN**  
 9-11-11 PLAN  
 1000 S. HAYWARD BL.  
 SAN LUIS OBISPO, CA 95060

11  
 10  
 9  
 8  
 7  
 6  
 5  
 4  
 3  
 2  
 1