

MCWILLIAMS STREET

SEE MCWILLIAMS STREET PLANS - SHEET C-4

GRADE 'N' STREET TO SUB-BASE ELEVATION. BASE AND A.C. PAVING N.I.C.

W. R.O.V. LINE

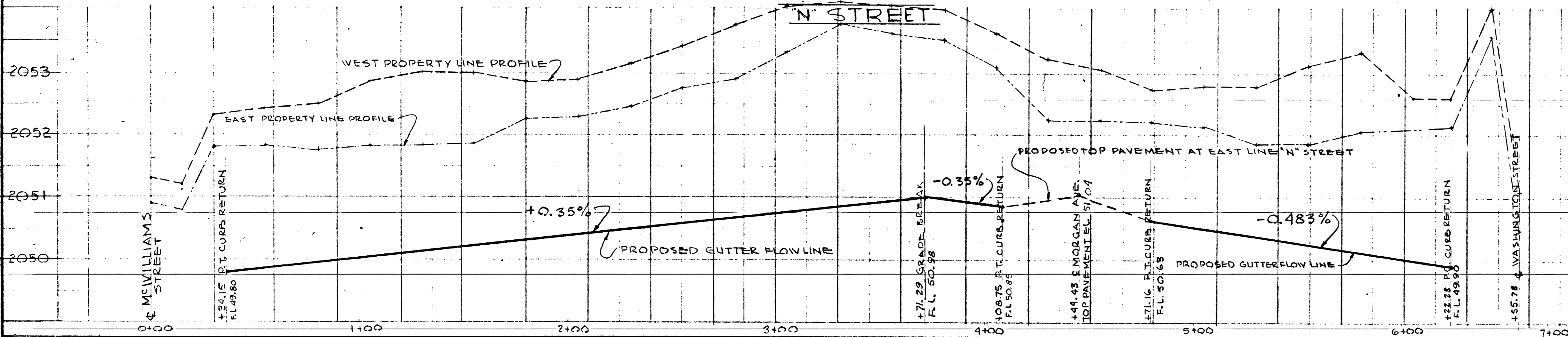
PROJECT BOUNDARY

MORGAN AVE.

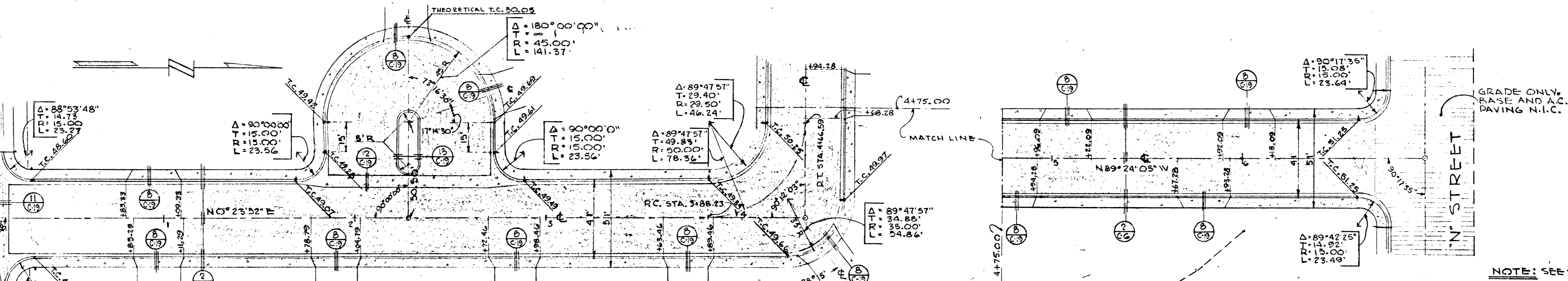
WASHINGTON AVE.

PROJECT BOUNDARY

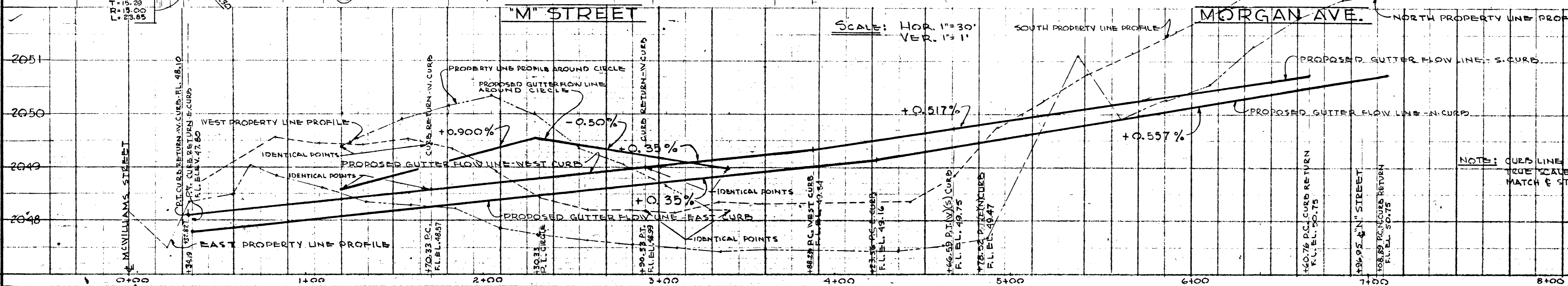
NOTE: SEE SHEETS C-2 & C-3



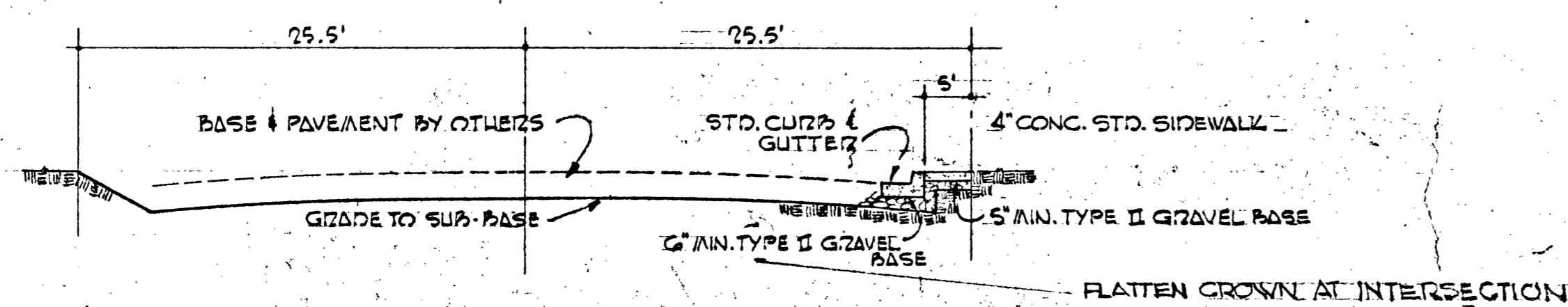
MCWILLIAMS STREET (SEE SHEET C-4 FOR DESIGN)



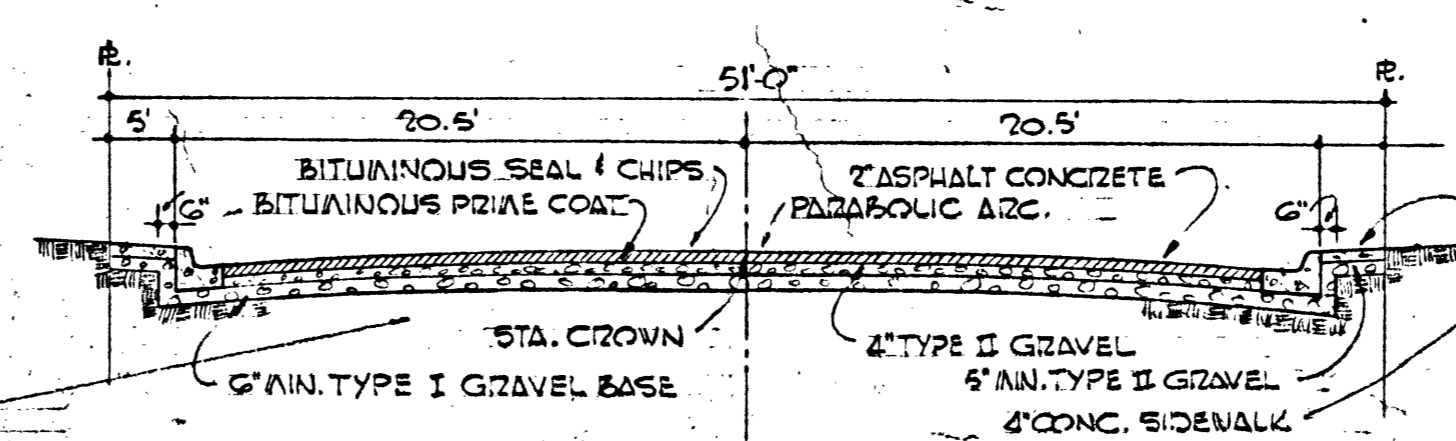
NOTE: SEE SHEETS C-2 & C-3



NOTE: CURB LINE PROFILES ARE SHOWN TRUE SCALE AND DO NOT NECESSARILY MATCH & STATIONING.



1 C-6 STREET SECTION - 'M' STREET



2 C-6 TYPICAL STREET SECTION

APPROVED: [Signature] DIRECTOR-CITY LAS VEGAS DEPT. PUBLIC WORKS

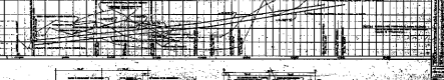
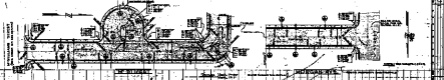
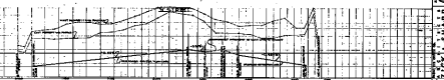
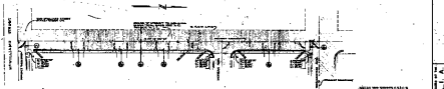
AS BUILT FINAL DRAWINGS

MEMBERS OF THE A. I. A. FROM THE OFFICE OF: ARCHITECTS ZICK & SHARP 1806 S. MAIN ST. LAS VEGAS, NEVADA

PROJECT: 'A' STREET PLAN & PROFILE FOR THE TRAVELING UNIT HOUSING PROJECT FOR THE HOUSING AUTHORITY OF THE CITY OF LAS VEGAS, NEVADA

JOB NUMBER: NEV 2-4 DATE: 6-24-60 DRAWN BY: JVS CHECKED: WZ-H.S. SHEET NUMBER: C-6

NO. DATE REVISIONS



MADE IN THE U.S.A.
 ZICK & SHARP

A5 BULLET