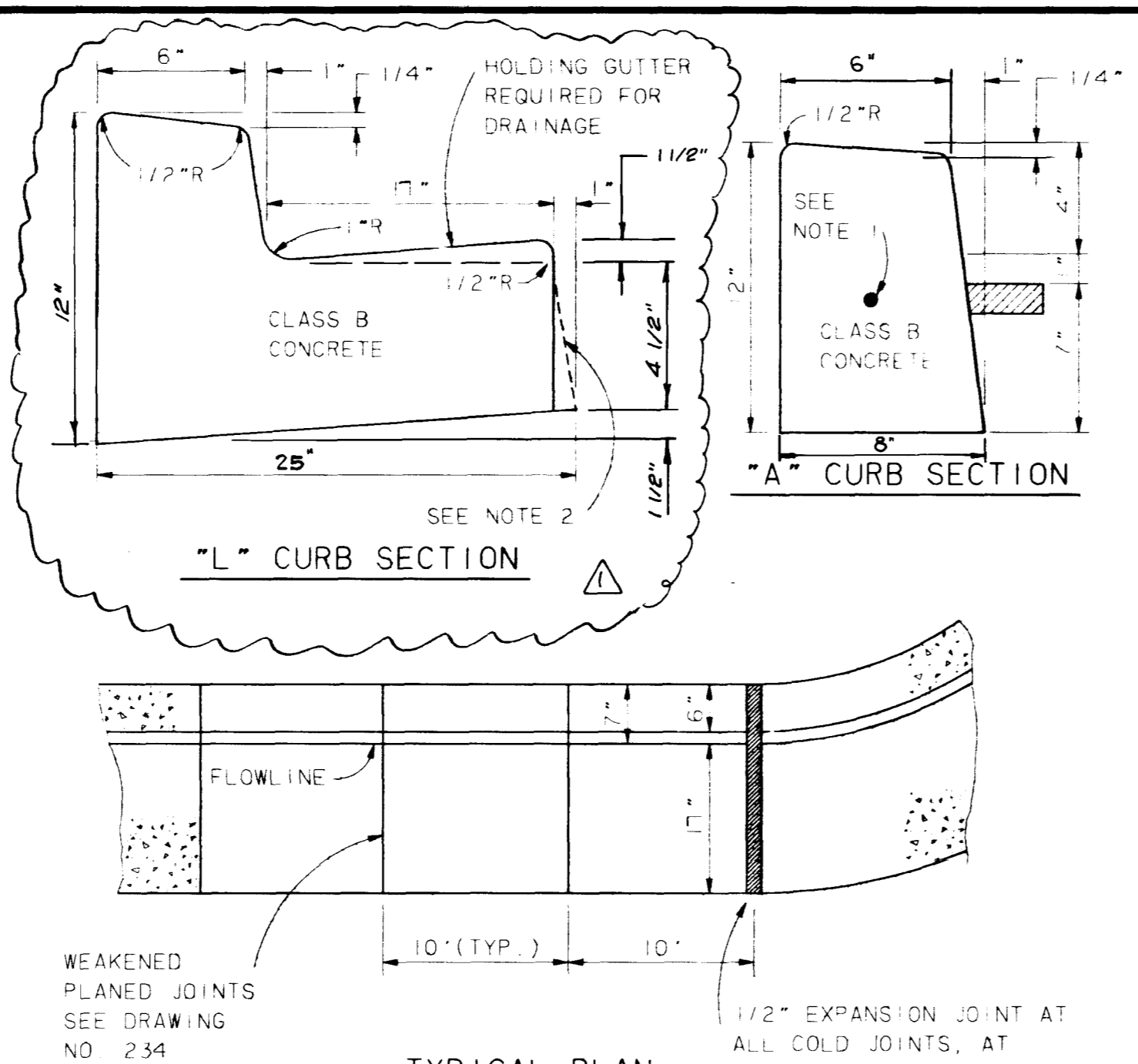


NOTES:
 1. ALL EXPOSED METAL PARTS SHALL BE GALVANIZED AND ALL GALVANIZING DAMAGED BY FABRICATION OR INSTALLATION SHALL RECEIVE TWO COATS OF ALUMINUM PAINT (GALVONOX OR EQUAL)

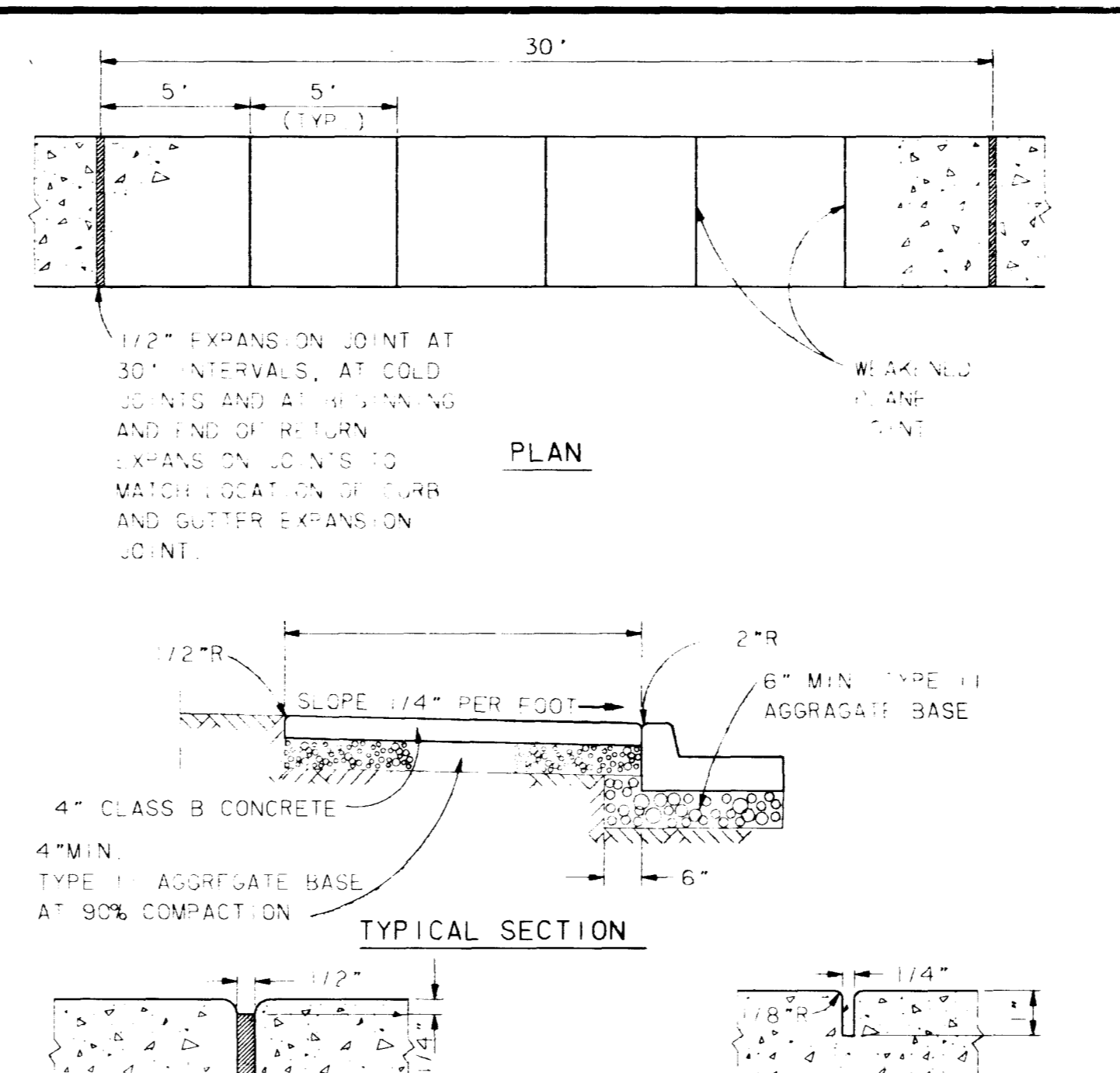
SIDEWALK DRAIN DETAIL
 CLV STD. DWG. NO. 236



NOTES:
 1. CONTINUOUS NO. 4 BAR REQUIRED IN NOSE OF MEDIAN ONLY.
 2. 1" BATTER ON GUTTER FACE OPTIONAL.

TYPICAL PLAN

ONSITE 'L' & 'A' CURB DETAILS
 CLV STD. DWG. NO. 216

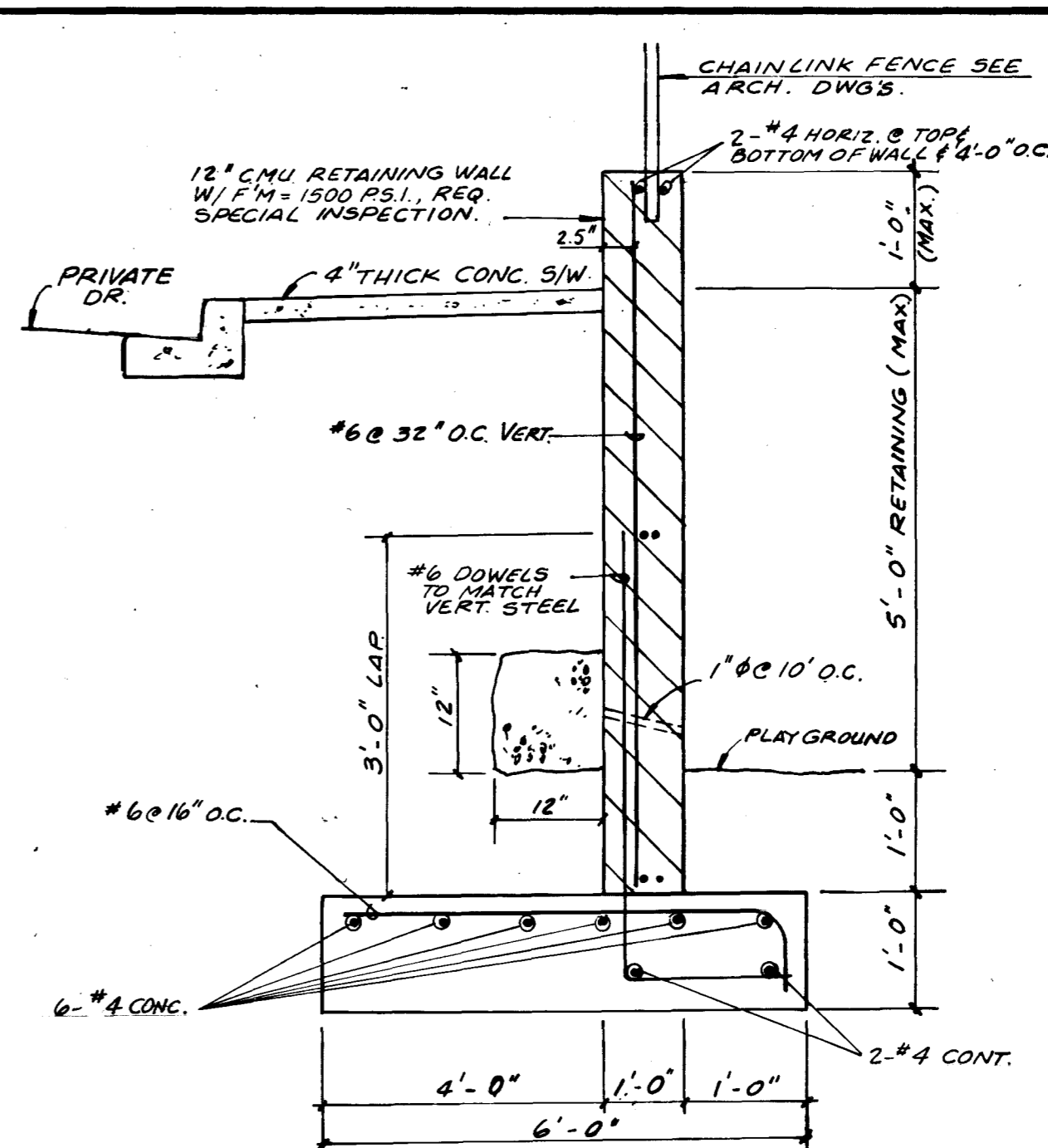


NOTE:
 1. ON ALL CURB RETURNS A 1/2" EXPANSION JOINT SHALL BE CONSTRUCTED BETWEEN THE BACK OF CURB AND THE SIDEWALK FOR THE ENTIRE LENGTH OF THE RETURN.

EXPANSION JOINT

WEAKENED PLANE JOINT

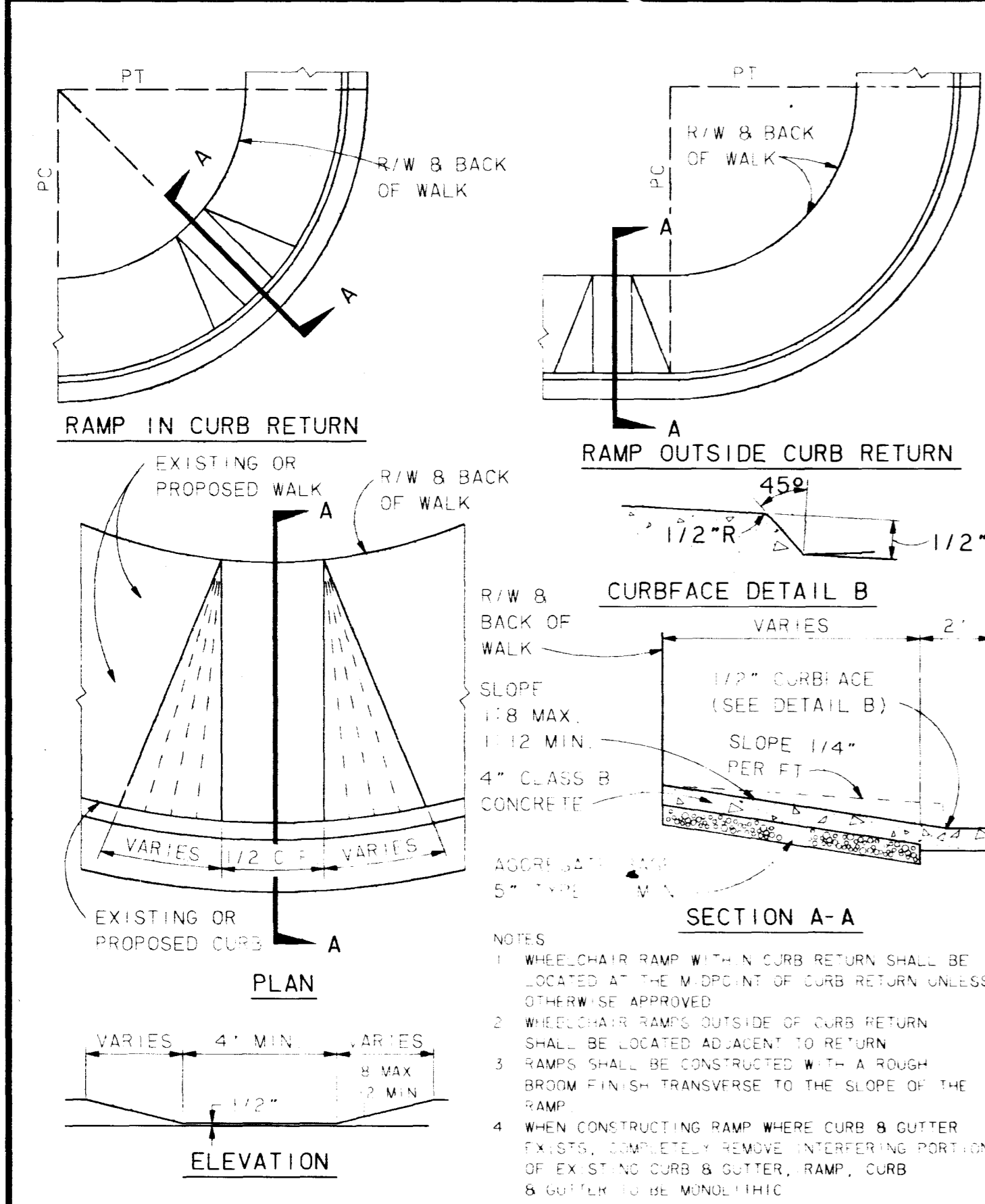
SIDEWALKS
 CLV STD. DWG. NO. 234



NOTE: SOLID GROUT ALL CELLS.

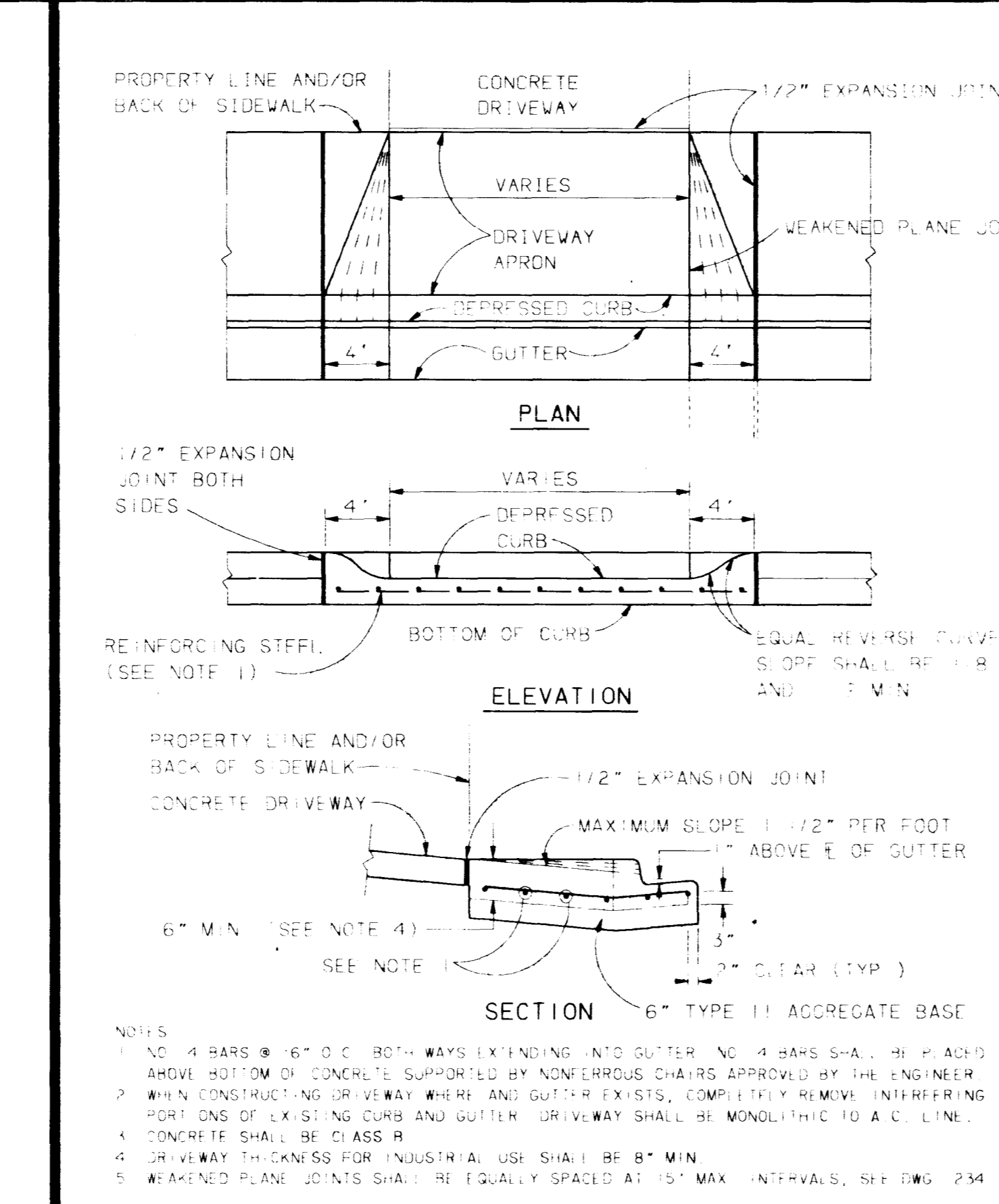
C.M.U. RETAINING WALL
 CLV STD. DWG. NO. 235

REV	DESCRIPTION	DATE
1	GEN. REV. (CLV)	11/19/04 J.F.



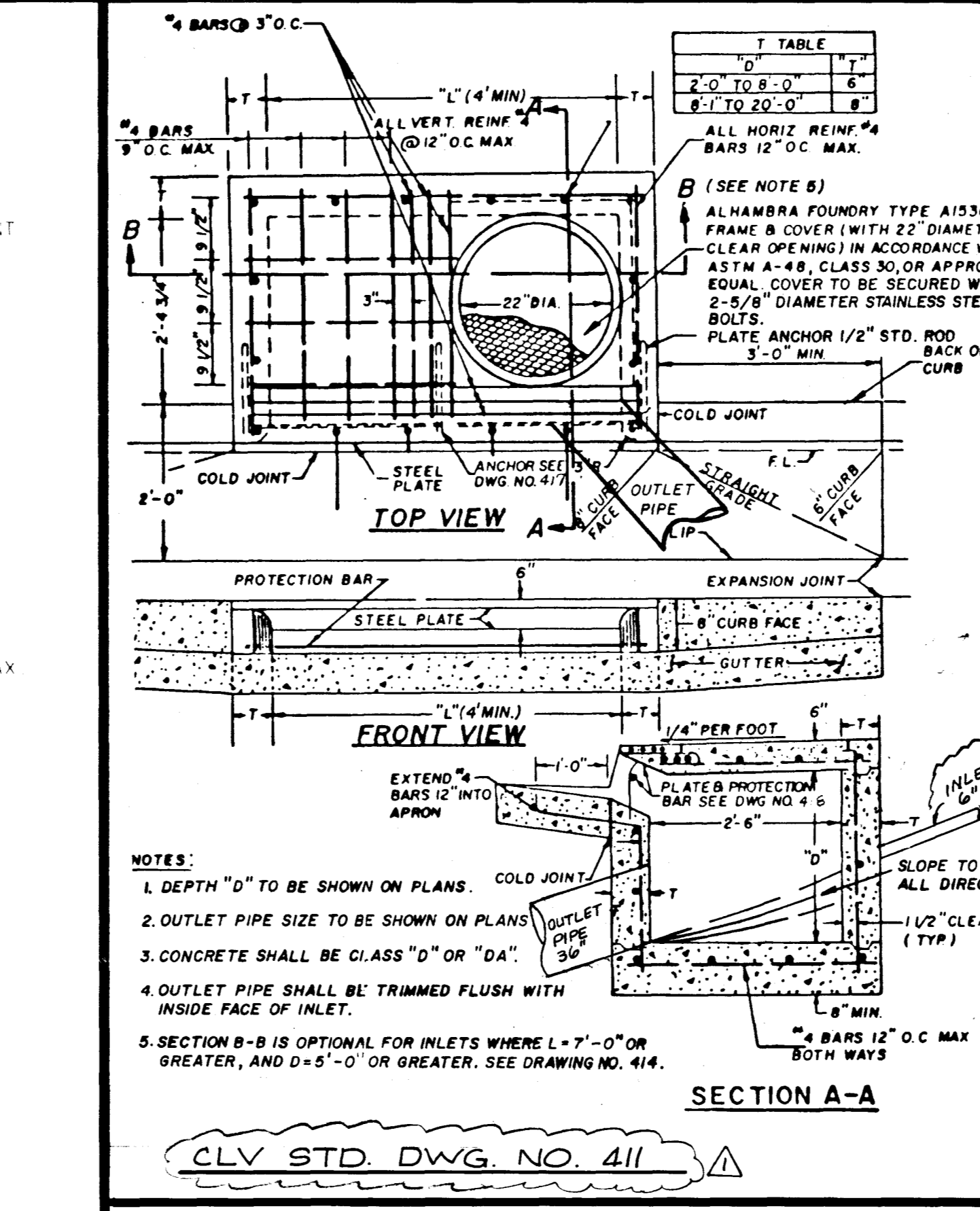
NOTES:
 1. WHEELCHAIR RAMP WITH IN CURB RETURN SHALL BE LOCATED AT THE WIDEST POINT OF CURB RETURN UNLESS OTHERWISE APPROVED.
 2. WHEELCHAIR RAMP OUTSIDE OF CURB RETURN SHALL BE LOCATED ADJACENT TO RETURN.
 3. RAMP SHALL BE CONSTRUCTED WITH A ROUGH BROOM FINISH TRANSVERSE TO THE SLOPE OF THE RAMP.
 4. WHEN CONSTRUCTING RAMP WHERE CURB & GUTTER EXISTS, COMPLETELY REMOVE INTERFERING PORTIONS OF EXISTING CURB & GUTTER, RAMP, CURB & GUTTER TO BE MONOLITHIC.

WHEELCHAIR RAMP
 CLV STD. DWG. NO. 235



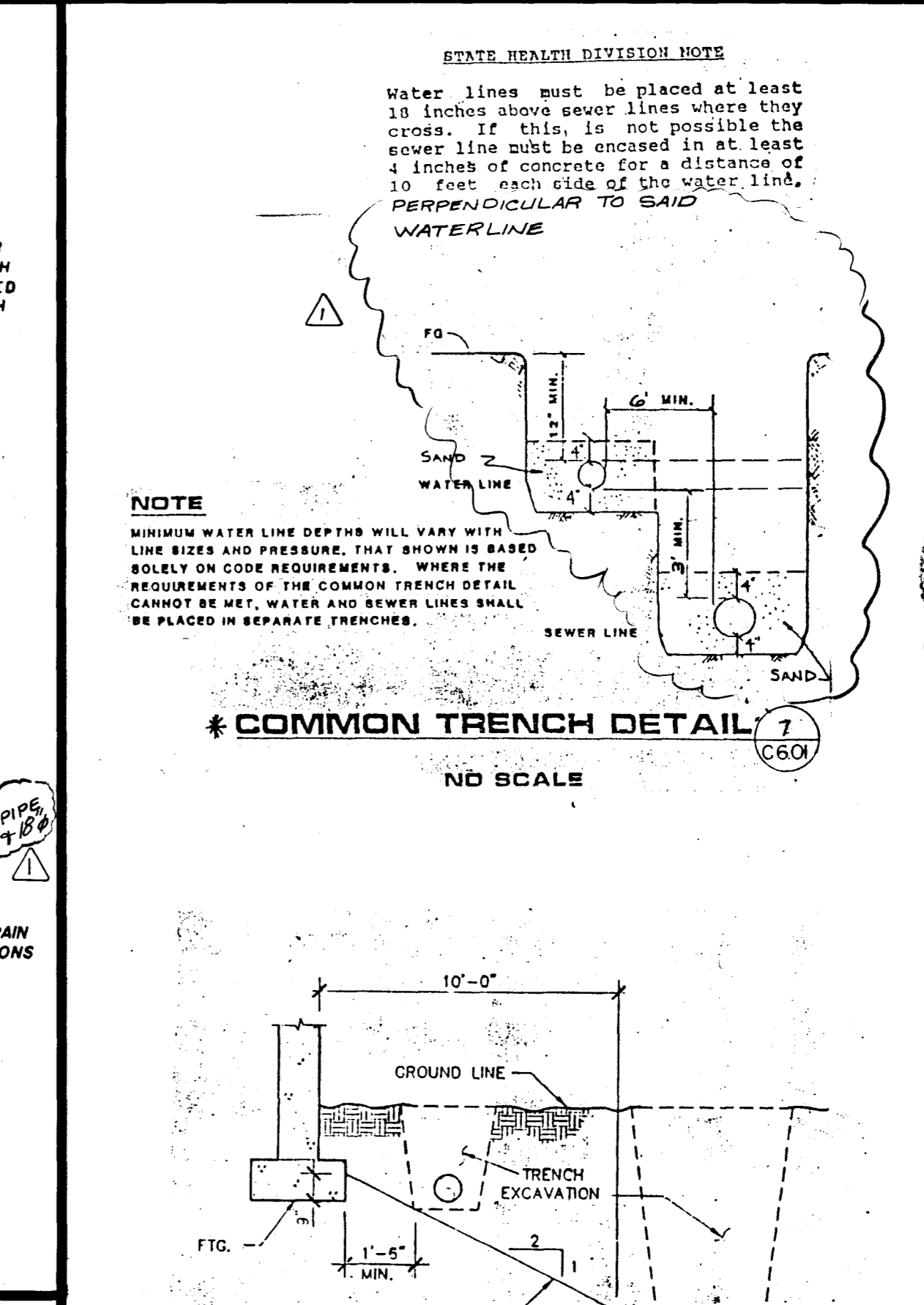
NOTES:
 1. NO. 4 BARS @ 16" O.C. BOTH WAYS EXTENDING INTO GUTTER. NO. 4 BARS SHALL BE PLACED 4" ABOVE BOTTOM OF CONCRETE SUPPORTED BY NONFERROUS CHAIRS APPROVED BY THE ENGINEER.
 2. WHEN CONSTRUCTING DRIVEWAY WHERE GUTTER EXISTS, COMPLETELY REMOVE INTERFERING PORTIONS OF EXISTING CURB AND GUTTER. DRIVEWAY SHALL BE MONOLITHIC TO A CURB LINE.
 3. CONCRETE SHALL BE CLASS B.
 4. DRIVEWAY THICKNESS FOR INDUSTRIAL USE SHALL BE 8" MIN.
 5. WEAKENED PLANE JOINTS SHALL BE EQUALLY SPACED AT 15' MAX. INTERVALS, SEE DWG. 234.

DRIVEWAYS
 CLV STD. DWG. NO. 224



NOTES:
 1. DEPTH "D" TO BE SHOWN ON PLANS.
 2. OUTLET PIPE SIZE TO BE SHOWN ON PLANS.
 3. CONCRETE SHALL BE CLASS "D" OR "DA".
 4. OUTLET PIPE SHALL BE TRIMMED FLUSH WITH INSIDE FACE OF INLET.
 5. SECTION B-B IS OPTIONAL FOR INLETS WHERE L=7'-0" OR GREATER, AND D=5'-0" OR GREATER. SEE DRAWING NO. 414.

COMMON TRENCH DETAIL
 CLV STD. DWG. NO. 411



NOTE:
 MINIMUM WATER LINE DEPTHS WILL VARY WITH LINE SIZES AND PRESSURE, THAT SHOWN IS BASED SOLELY ON CODE REQUIREMENTS. WHEN THE REQUIREMENTS OF THE COMMON TRENCH DETAIL CANNOT BE MET, WATER AND SEWER LINES SHALL BE PLACED IN SEPARATE TRENCHES.

COMMON TRENCH DETAIL
 CLV STD. DWG. NO. 411

THESE DRAWINGS ARE INSTRUMENTS OF SERVICE AND SHALL REMAIN THE PROPERTY OF THE ARCHITECT. ANY REPRODUCTIONS ARE NOT TO BE MADE.

MARTIN & MARTIN
 ARCHITECTS
 1000 S. LAS VEGAS BLVD., SUITE 400
 LAS VEGAS, NEVADA 89101
 PHONE: (702) 385-8005

CLARK COUNTY SCHOOL DISTRICT

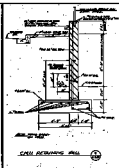
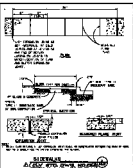
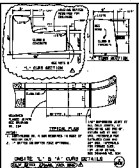
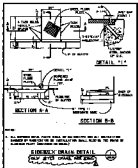
EDYTHE & LLOYD KATZ ELEMENTARY SCHOOL

SECTIONS AND DETAILS

oico
 ARCHITECTS
 ARTURO CAMBERO A.I.A.

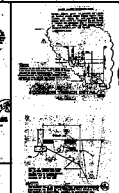
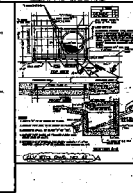
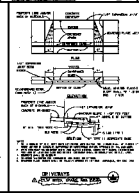
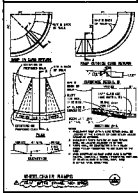
C6.01

ALL DIMENSIONS UNLESS OTHERWISE NOTED
 SHALL BE IN FEET AND INCHES
 1/4" = 1'-0"



NO.	DESCRIPTION
1	...
2	...
3	...
4	...
5	...
6	...
7	...
8	...
9	...
10	...
11	...
12	...
13	...
14	...
15	...
16	...
17	...
18	...
19	...
20	...
21	...
22	...
23	...
24	...
25	...
26	...
27	...
28	...
29	...
30	...
31	...
32	...
33	...
34	...
35	...
36	...
37	...
38	...
39	...
40	...
41	...
42	...
43	...
44	...
45	...
46	...
47	...
48	...
49	...
50	...

1473



C. G. O'CONNELL
 ARCHITECT
 12345 MAIN STREET
 SAN FRANCISCO, CALIF.

GLIEM COUNTY SCHOOL DISTRICT
 EDITH & LLOYD HAZZ ELEMENTARY SCHOOL
 SECTION AND DETAILS

C&O
 ARCHITECTS
 12345 MAIN STREET
 SAN FRANCISCO, CALIF.

C&O
 ARCHITECTS