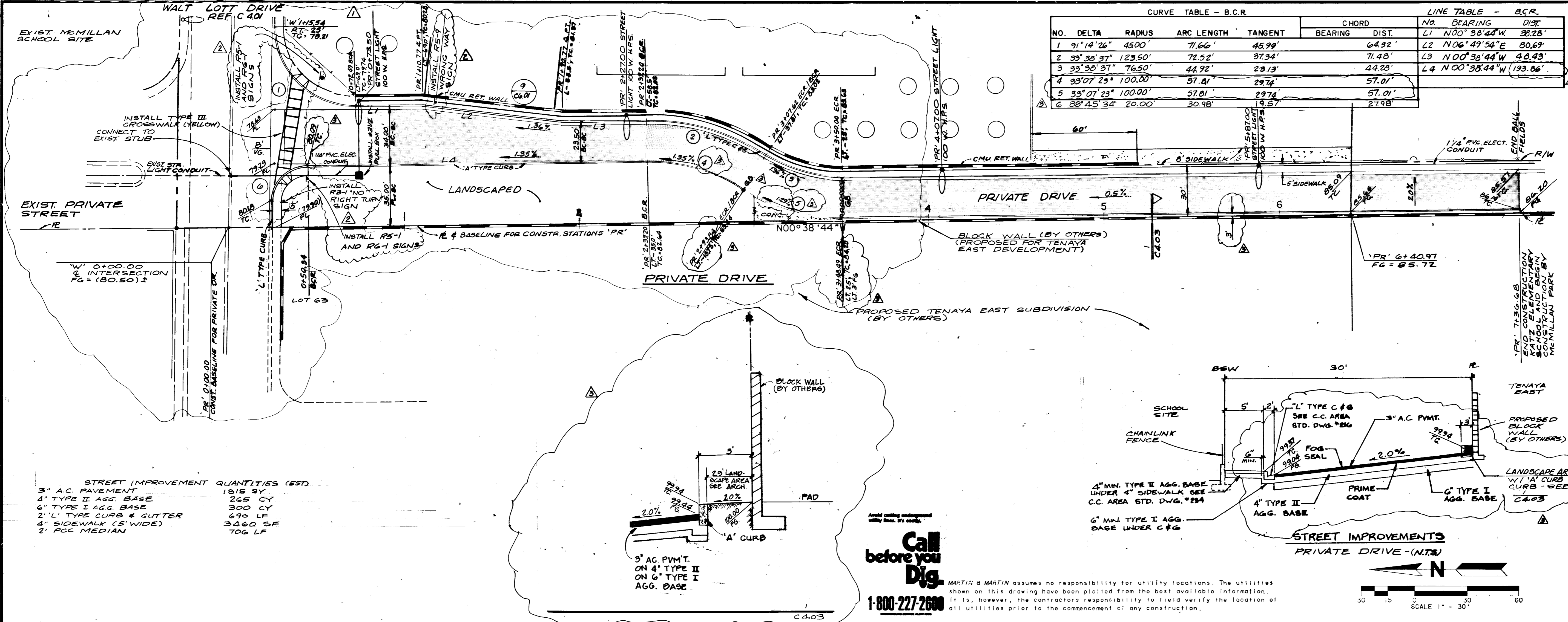


11-61

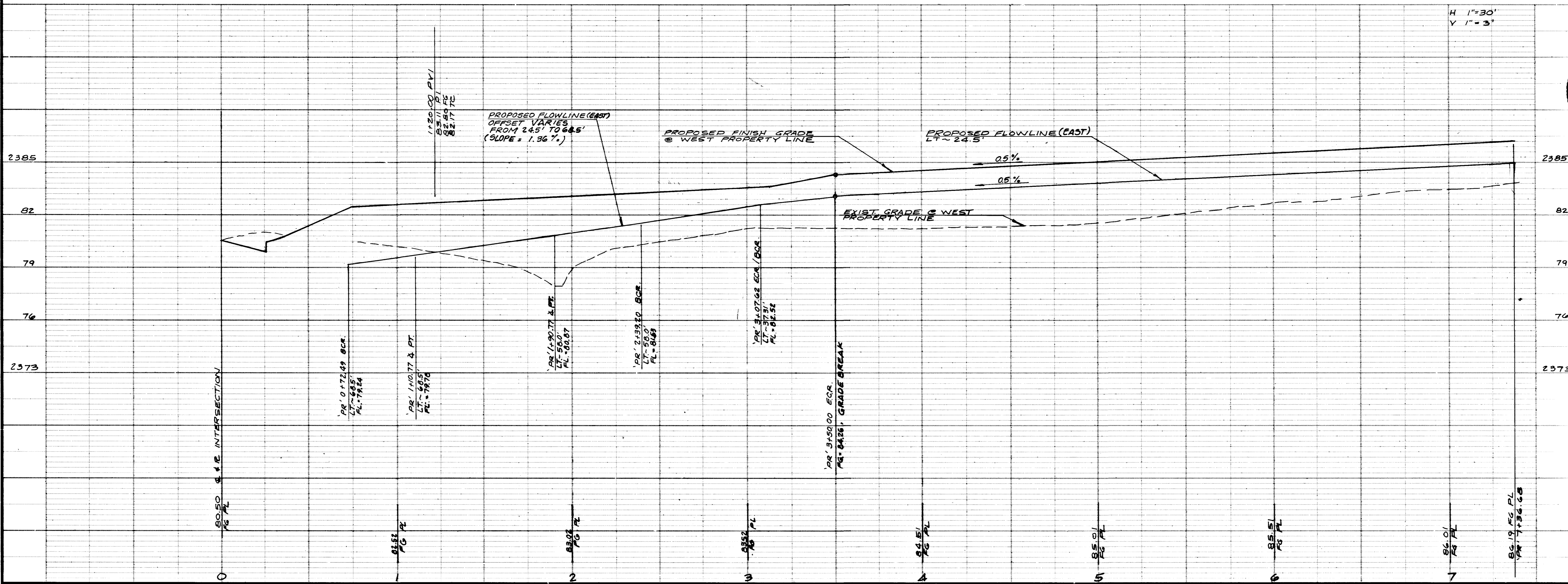


CURVE TABLE - B.C.R.				LINE TABLE - B.C.R.			
NO.	DELTA	RADIUS	ARC LENGTH	TANGENT	CHORD	BEARING	DIST.
1	91°14'26"	4500'	71.66'	45.99'	64.92'	L1 N00°38'44"W	38.28'
2	33°30'37"	123.50'	72.52'	37.34'	71.48'	L2 N06°49'54"E	80.69'
3	33°30'37"	76.50'	44.92'	23.13'	44.28'	L3 N00°38'44"W	48.43'
4	33°07'23"	100.00'	57.81'	29.74'	57.01'	L4 N00°38'44"W	193.86'
5	33°07'23"	100.00'	57.01'	29.74'	57.01'		
6	88°45'34"	20.00'	30.98'	14.57'	27.98'		

STREET IMPROVEMENT QUANTITIES (EST)

3" A.C. PAVEMENT	1815 CY
4" TYPE II AGG. BASE	265 CY
6" TYPE I AGG. BASE	300 CY
2" L' TYPE CURB & CUTTER	690 LF
4" SIDEWALK (5' WIDE)	3460 SF
2" P.C. MEDIAN	706 LF

REV.	DESCRIPTION	DATE	BY
1	REUSED ALIGNMENT PRIVATE DR. 22' 20" N.T.F.		
2	GEN. REV. (CLV)	11-19-90	M.J.F.
3	REVISE P.C.C. BARRIER TO LANDSCAPING; MISC. REVISIONS.	12-31-90	M.L.H.



THESE DRAWINGS AS INSTRUMENTS OF SERVICES ARE AND SHALL REMAIN THE PROPERTY OF THE ARCHITECT
 THESE DRAWINGS ARE NOT TO BE SCALED

PROFESSIONAL SEAL
 MARK L. HEDGE
 CIVIL ENGINEER
 No. 1030
 STATE OF NEVADA
 12-28-90
 MARK L. HEDGE
 CIVIL ENGINEER
 12-28-90
 MARK L. HEDGE
 CIVIL ENGINEER
 12-28-90

MARTIN & MARTIN
 CIVIL ENGINEERS
 1701 W. CHARLESTON BL.
 SUITE 420
 LAS VEGAS, NEVADA 89102
 PHONE (702) 887-8825

MARTIN & MARTIN

oico
 ARCHITECTS
 ARTURO CARREIRO A.I.A.

CLARK COUNTY SCHOOL DISTRICT
 SPECIAL PROJECTS 4280 EUCALYPTUS ANEX 789-5025 LAS VEGAS, NEVADA 89121

EDYTHE & LLOYD KATZ ELEMENTARY SCHOOL
 PROJECT
 DRAWING TITLE PRIVATE DRIVE - STREET IMPROVEMENTS

SHEET NO. 4
 PROJECT NO. 1030
 DATE 12-28-90
 DRAWN BY R. YOUNG
 CHECKED BY J. DAVIS
 APPROVED BY M. HEDGE
 DATE 12-28-90

C4.03

