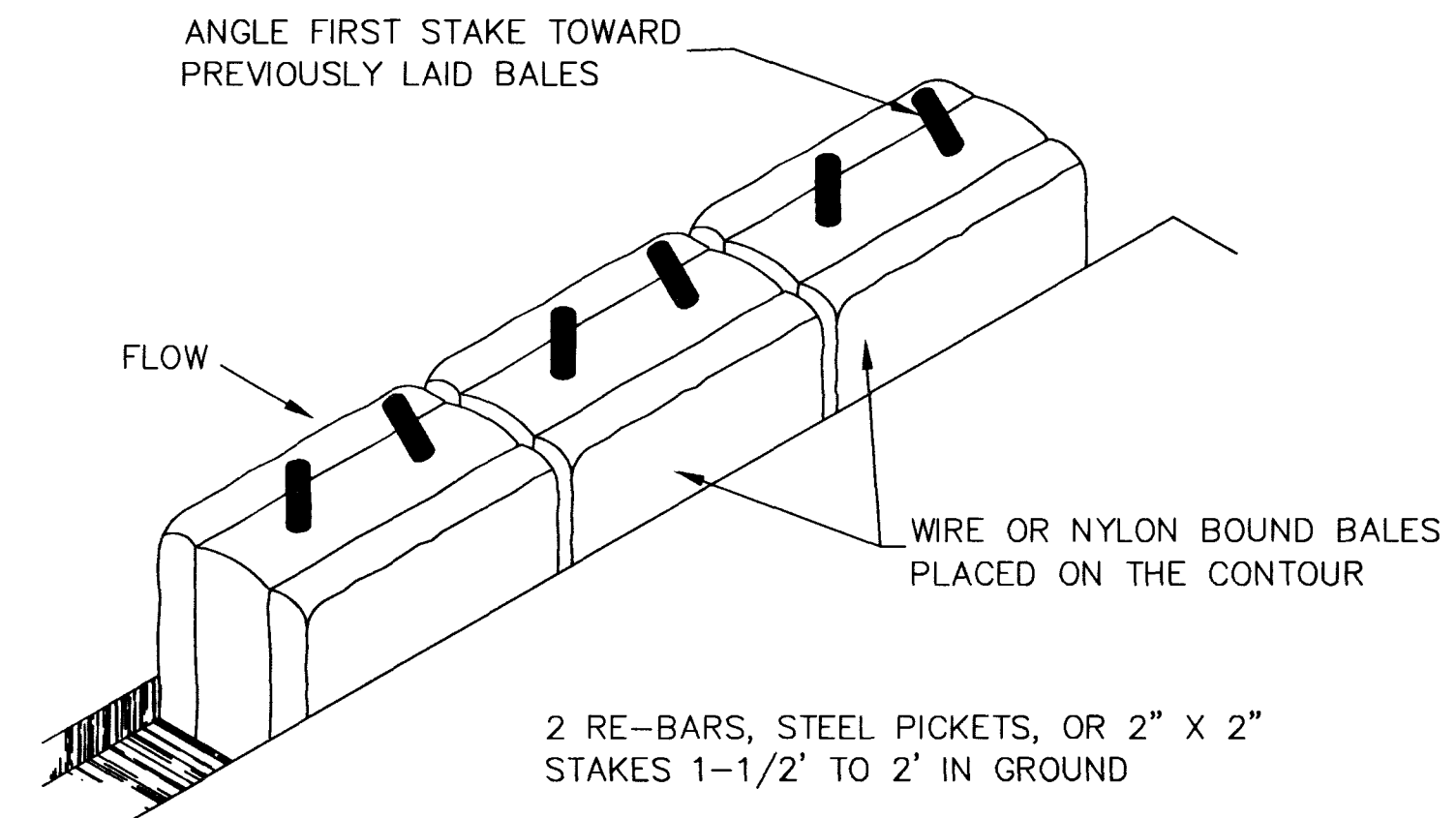
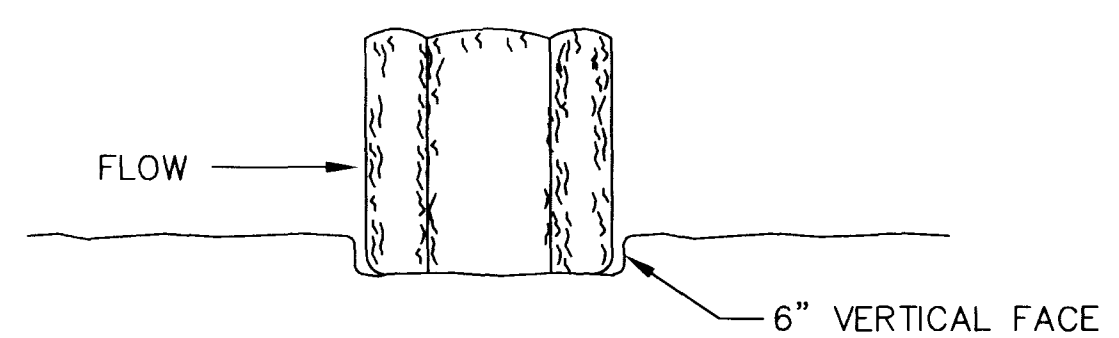


STATE OF NEVADA DEPARTMENT OF CONSERVATION AND NATURAL RESOURCES:

STORMWATER PERMITS ARE REQUIRED BY FEDERAL LAW FOR CONSTRUCTION ACTIVITIES THAT DISTURB FIVE OR MORE ACRES AND DISCHARGE STORMWATER. U.S. STORMWATER GENERAL PERMIT NO GNV0022241 HAS BEEN ISSUED BY THE STATE OF NEVADA TO MEET THIS REQUIREMENT. THE CONTRACTOR SHALL SECURE AND PAY FOR THE STORMWATER PERMIT. CONTRACTOR SHOULD CONTACT THE NEVADA DEPARTMENT OF ENVIRONMENTAL PROTECTION, BUREAU OF WATER POLLUTION CONTROL AT 555 WASHINGTON AVENUE, ROOM 4300, LAS VEGAS, NEVADA 89106, PHONE (702) 486-2873 FOR INFORMATION AND PROPER FILING PROCEDURE.



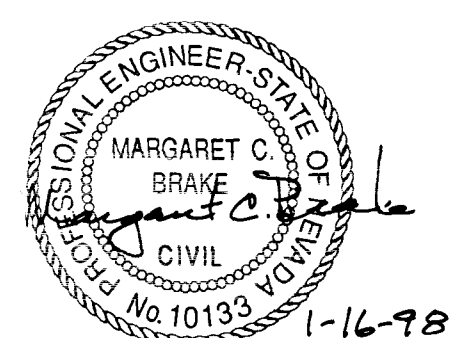
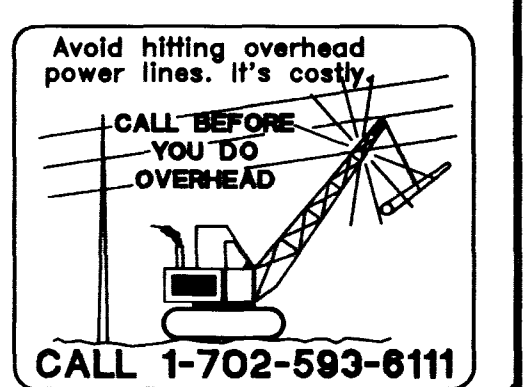
SCALE: 1" = 40'



UTILITY NOTE:

UTILITY LOCATIONS SHOWN HEREON ARE APPROXIMATE ONLY. IT SHALL BE THE CONTRACTOR'S RESPONSIBILITY TO DETERMINE THE EXACT HORIZONTAL AND VERTICAL LOCATION OF ALL EXISTING UTILITIES PRIOR TO COMMENCING CONSTRUCTION. NO REPRESENTATION IS MADE THAT ALL EXISTING UTILITIES ARE SHOWN HEREON. THE ENGINEER ASSUMES NO RESPONSIBILITY FOR UTILITIES NOT SHOWN OR UTILITIES NOT SHOWN IN THEIR PROPER LOCATION.

Call before you Dig
1-800-227-2600
UNDERGROUND SERVICE (USA)



BASIS OF BEARINGS

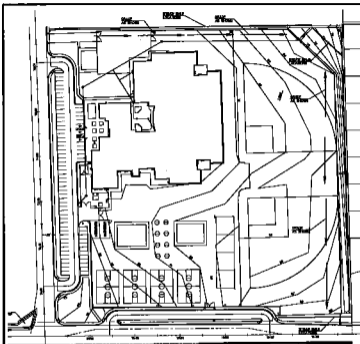
SOUTH 89°34'52" WEST, BEING THE SOUTH LINE OF THE NE 1/4 NW 1/4 OF SECTION 8, TOWNSHIP 20 SOUTH, RANGE 60 EAST, M.D.M., AS SHOWN IN FILE 74 OF SURVEYS, PAGE 79, CLARK COUNTY, NEVADA, RECORDER'S CUMULATIVE MAP INDEX, ALSO BEING THE CENTERLINE OF GILMORE AVENUE.

PROJECT BENCHMARK

CITY OF LAS VEGAS BENCHMARK NO.0LV0017;NES; RIVET & PLATE IN TOP OF CURB AT SOUTHWEST RETURN OF CHEYENNE AVE. & RAMPART BLVD. ELEVATION = 2448.333 (NGVD 29) ADD 2.43' FOR (NAVD 88)

DESIGNED BY: MCB	ENGINEERING CORPORATION
DRAWN BY: MCB	CONSULTING ENGINEERS AND SURVEYORS
CHECKED BY: RDC	3444 SOUTH HIGHLAND, LAS VEGAS, NEVADA 89103
AUG 7, 1997	PHONE: (702) 252-3238 FAX: (702) 252-3247
EDITH GAREHIME	NEVADA
ELEMENTARY SCHOOL CCSD #0835	CLARK COUNTY
STORMWATER POLLUTION PREVENTION PLAN	LAS VEGAS
BY APP'D	
DESCRIPTION	
REV. DATE	
SCALE	
HORIZ. 1" = 40'	
VERT. N/A	
JOB NO. J71363	
REVISED/J71363/2301.DWG	
SHEET 20	
OF 23	

7293



BASELINE OF MARKINGS

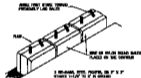
NOTE: ALL DIMENSIONS ARE TO CENTER LINE OF ROAD OR CENTER OF DRIVEWAY UNLESS OTHERWISE NOTED. ALL DIMENSIONS ARE TO FACE OF CURB OR FACE OF DRIVEWAY UNLESS OTHERWISE NOTED. ALL DIMENSIONS ARE TO FACE OF CURB OR FACE OF DRIVEWAY UNLESS OTHERWISE NOTED.

PROJECT BENCHMARK

NOTE: ALL DIMENSIONS ARE TO CENTER LINE OF ROAD OR CENTER OF DRIVEWAY UNLESS OTHERWISE NOTED. ALL DIMENSIONS ARE TO FACE OF CURB OR FACE OF DRIVEWAY UNLESS OTHERWISE NOTED.

NOTES ON GENERAL REQUIREMENTS OF CONSTRUCTION AND UTILITY MARKINGS

CONSTRUCTION SHALL BE ACCORDING TO STANDARD SPECIFICATIONS FOR HIGHWAY CONSTRUCTION, LATEST EDITION, AS APPLICABLE. ALL DIMENSIONS SHALL BE TO FACE UNLESS OTHERWISE NOTED. ALL DIMENSIONS SHALL BE TO FACE UNLESS OTHERWISE NOTED. ALL DIMENSIONS SHALL BE TO FACE UNLESS OTHERWISE NOTED.



UTILITY NOTE:



PROJECT NO. 718-101 SHEET NO. 10 DATE 10/1/74 DRAWN BY [Name] CHECKED BY [Name] APPROVED BY [Name]	SUMMARY PROJECT BENCHMARK UTILITY MARKINGS CONSTRUCTION
---	---