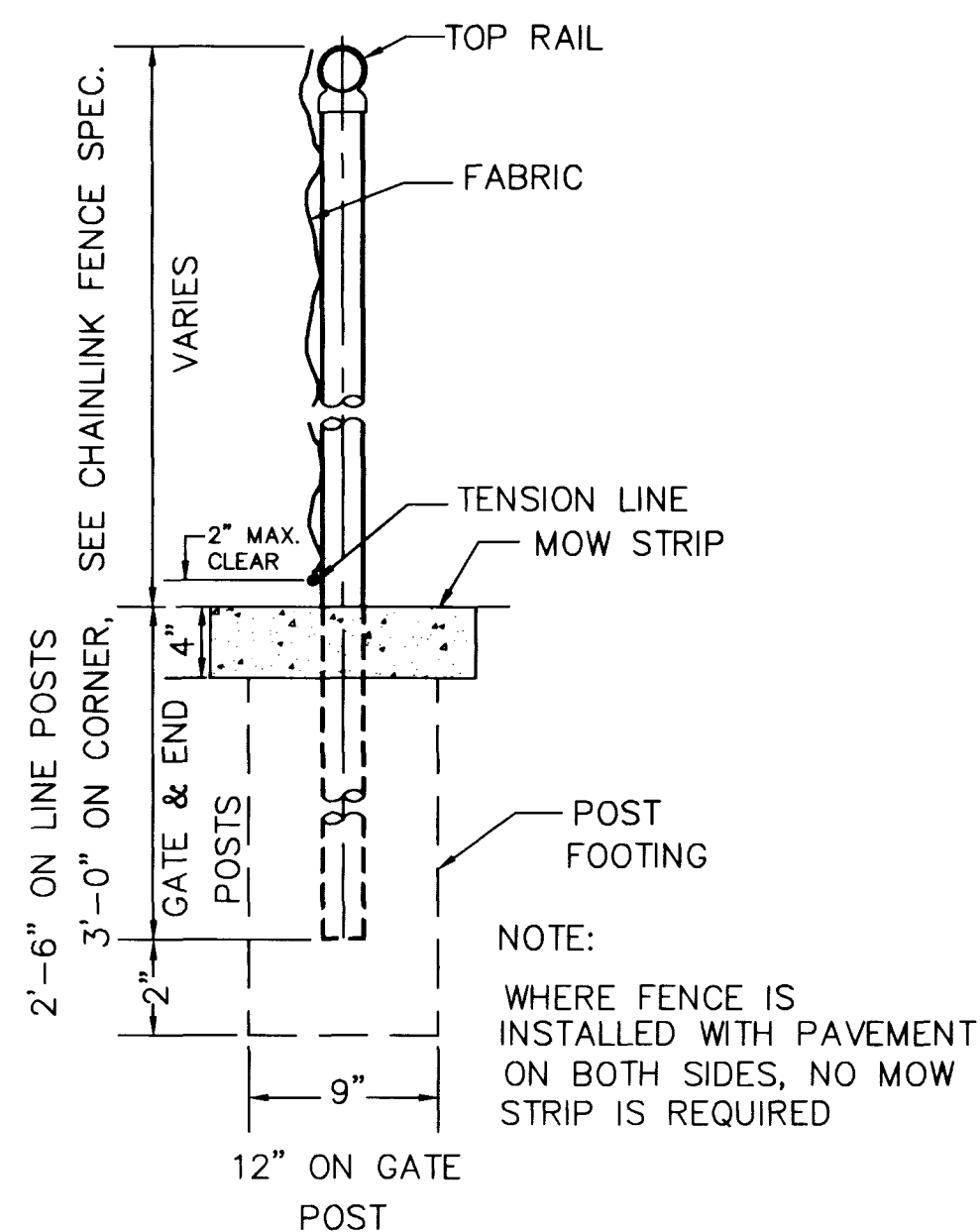


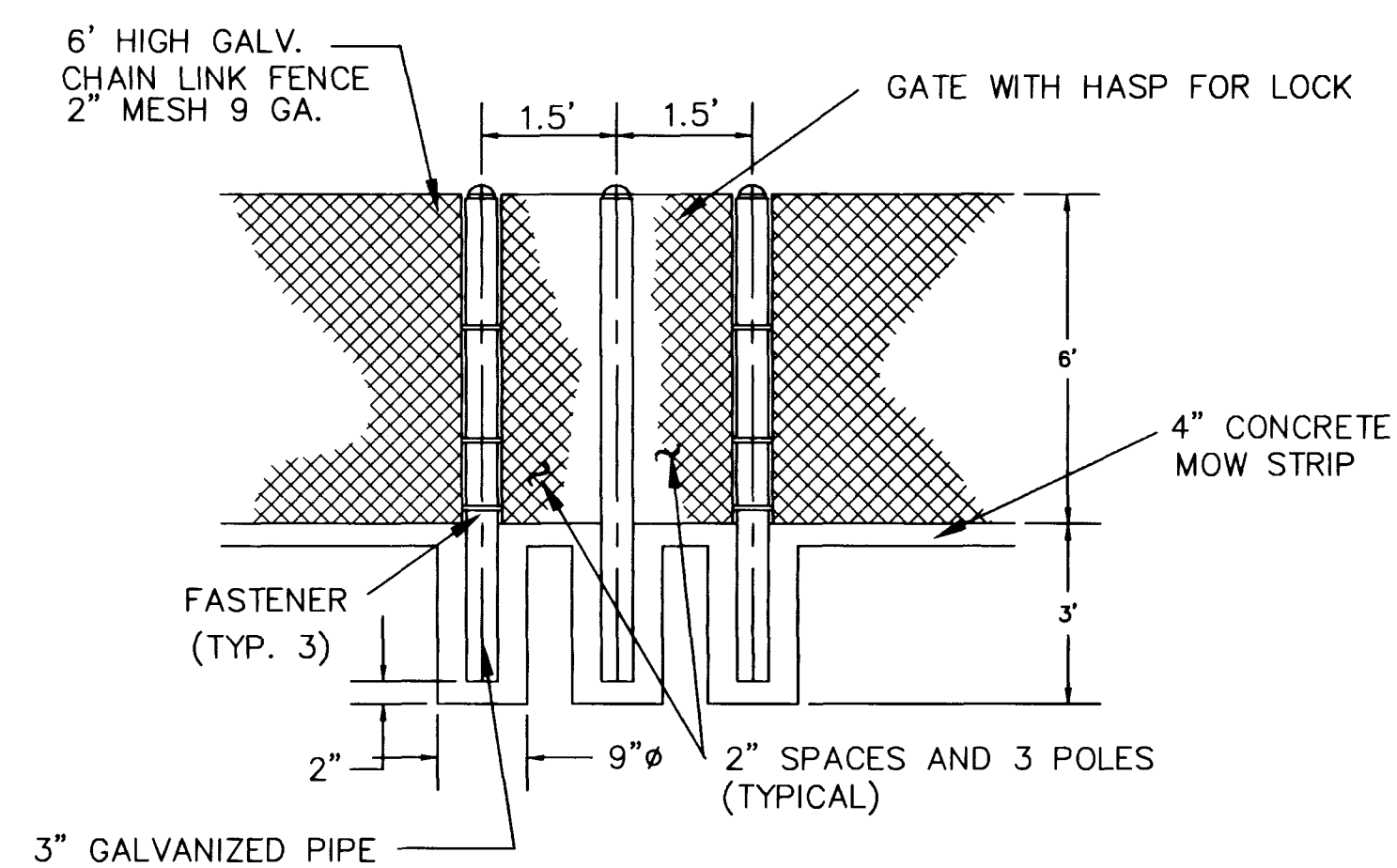
SOFTBALL FIELD

DETAIL P

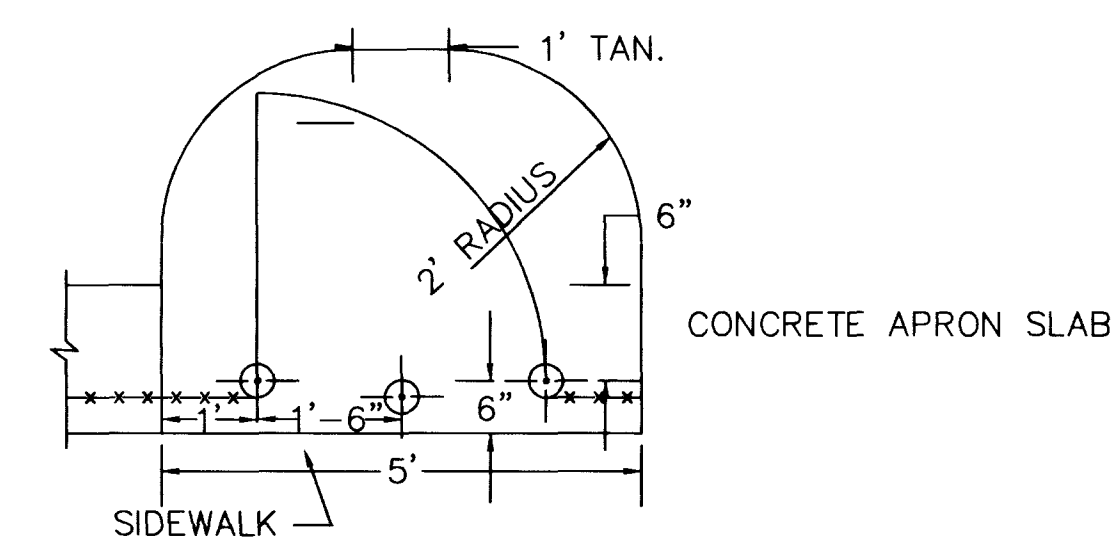


FENCE AND MOW STRIP DETAIL

DETAIL Q



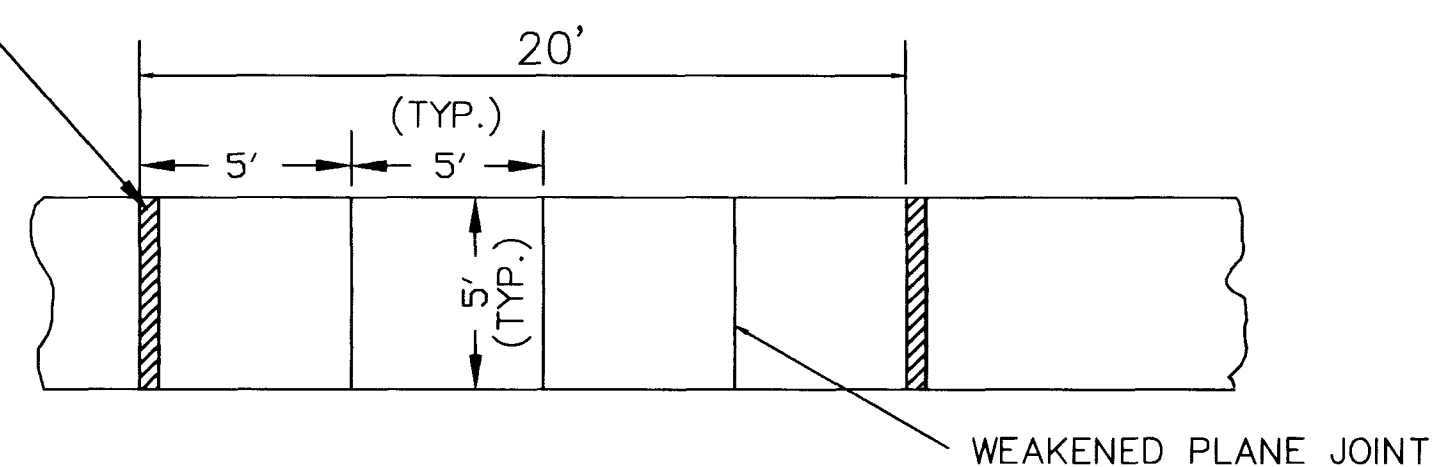
MAZE N.T.S.



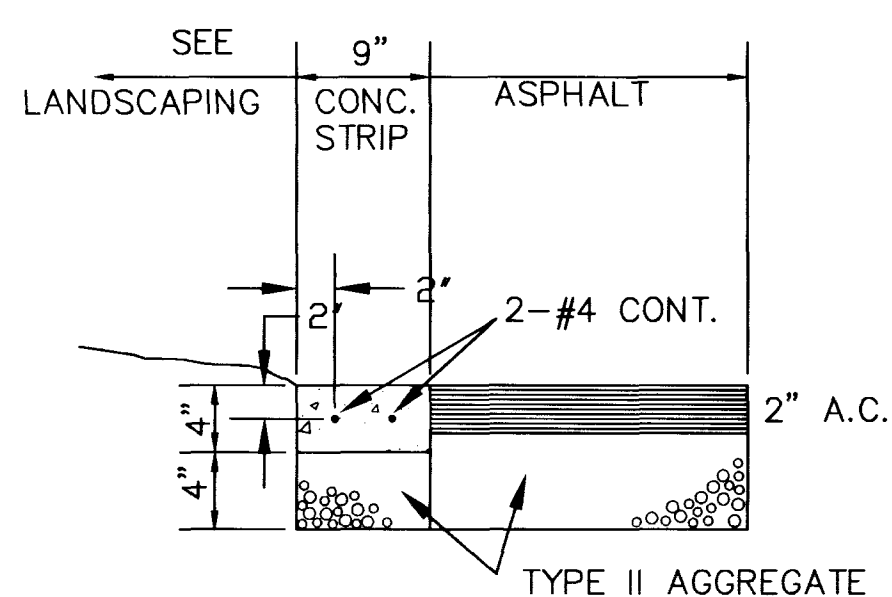
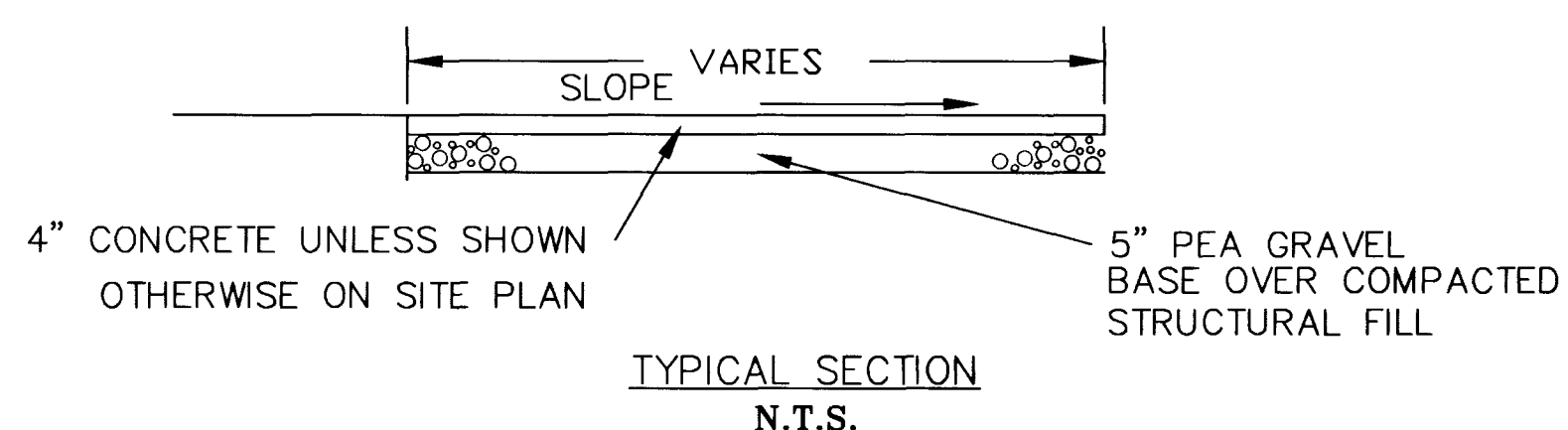
SLAB N.T.S.

DETAIL R

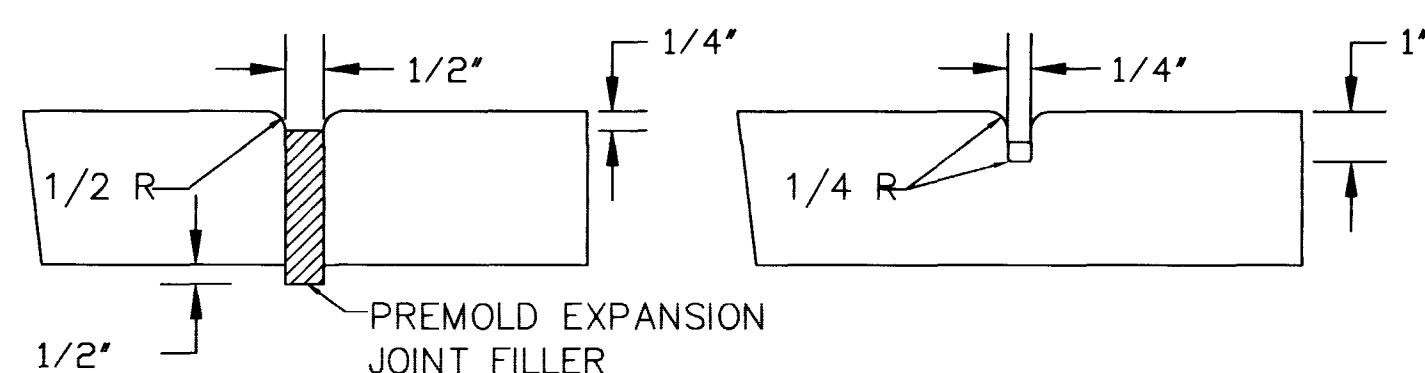
1/2" EXPANSION JOINT AT 20' INTERVALS AT COLD JOINTS AND AT BEGINNING AND END OF RETURNS EXPANSION JOINTS TO MATCH LOCATION OF CURB AND GUTTER EXPANSION JOINT.



PLAN N.T.S.



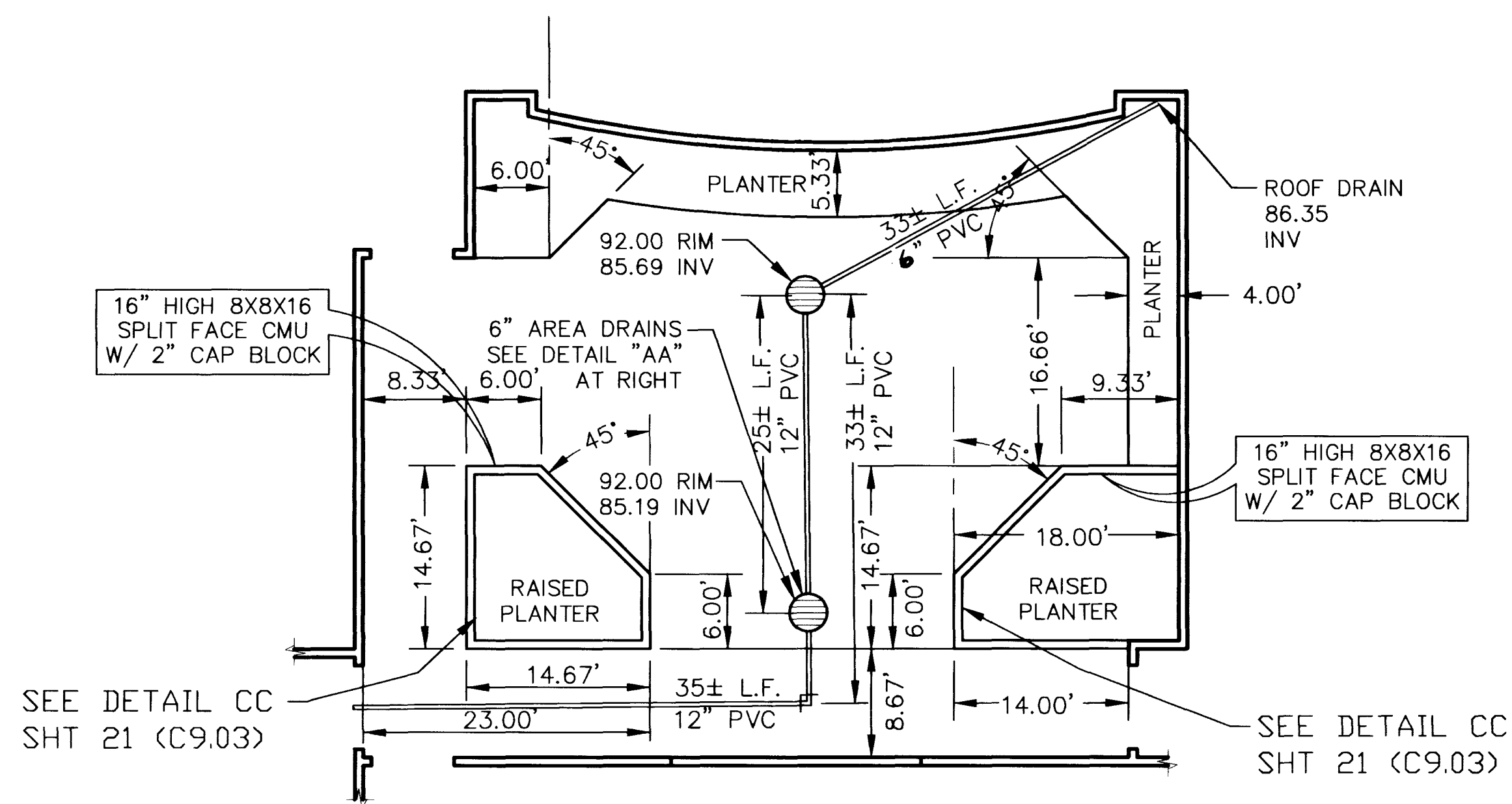
CONCRETE STRIP SECTION N.T.S.



ON-SITE SIDEWALK & CONCRETE AREAS

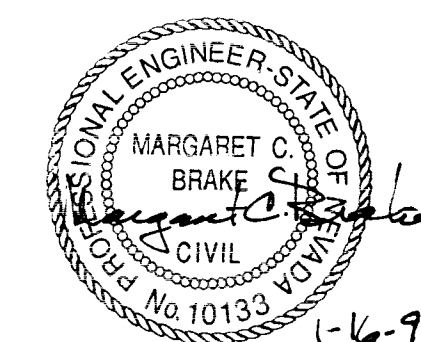
DETAIL S

DETAIL T



EXTERIOR LEARNING AREA (96) N.T.S.

DETAIL U



**SUMMIT** ENGINEERING CORPORATION  
CONSULTING ENGINEERS AND SURVEYORS  
3641 SOUTH HIGHLAND, LAS VEGAS, NEVADA 89108  
PHONE: 702-252-3238

DESIGNED BY: MCB  
DRAWN BY: MCB  
CHECKED BY: JJS  
AUG 7, 1997

EDITH GAREHIME  
ELEMENTARY SCHOOL CCSD #0835  
DETAILS  
CLARK COUNTY  
NEVADA  
LAS VEGAS

REV.	DATE	DESCRIPTION	BY	APP'D

SHEET 17 of 23  
SCALE: HORIZ. N/A, VERT. N/A  
JOB NO. J71363  
K:\DWG\J71363\704.DWG

