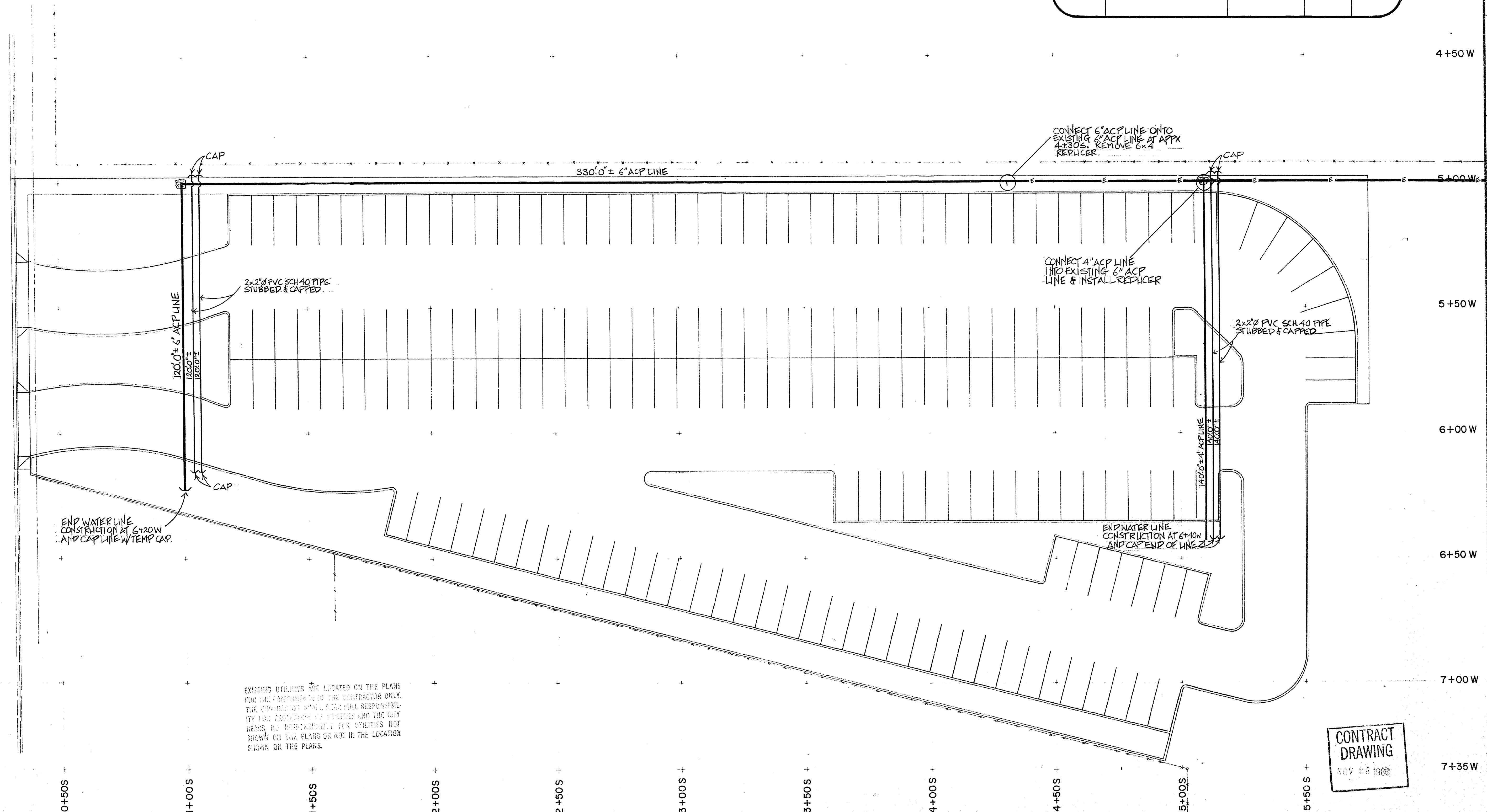


0+000 7+00 8+00 VEGAS DRIVE 5+00



- NOTE THIS SHEET:
- ① THRUST BLOCKS SHALL BE INSTALLED AT ALL PIPE JUNCTIONS FOR 3" DIA. PIPE AND LARGER PER STD. DWG. SEC. 560.2
  - ② DEPTH OF PIPES SHALL BE 24" MIN. BELOW F.G.

QUANTITIES				
SYMBOL	DESCRIPTION	ITEM NUMBER	UNIT	QTY.
---	EXISTING 6" ACP LINE			
---	NEW 6" ACP LINE	629.02.026	LF	450
---	NEW 4" ACP LINE	629.02.024	LF	140
---	2" Ø PVC SCHEDULE 40 PIPE	213.02.02	LF	520

END WATER LINE CONSTRUCTION AT 6+20W AND CAP LINE W/ TEMP CAP.

EXISTING UTILITIES ARE LOCATED ON THE PLANS FOR THE INFORMATION OF THE CONTRACTOR ONLY. THE CONTRACTOR SHALL BE RESPONSIBLE FOR PROTECTION OF UTILITIES AND THE CITY BEARS NO RESPONSIBILITY FOR UTILITIES NOT SHOWN ON THE PLANS OR NOT IN THE LOCATION SHOWN ON THE PLANS.

CONNECT 6" ACP LINE ONTO EXISTING 6" ACP LINE AT APPX 4+30S. REMOVE 6x4 REDUCER.

CONNECT 4" ACP LINE INTO EXISTING 6" ACP LINE & INSTALL REDUCER

END WATER LINE CONSTRUCTION AT 6+40W AND CAP END OF LINE 2"

CONTRACT DRAWING  
NOV 26 1988

Scale (h) 1" = 20'    Scale (v) ---    W. A. no. 0022

Fid. bk. no. 78-2X    Date APRIL 1980    Drawn by PAIDE & CAS

Design by SALES

Department of Public Services    Engineering Design Division

ED FOUNTAIN PARK    PHASE II

Drawing no. 675-22A

BID No 81.3550.3    SHEET 6 of 19

25-13-88