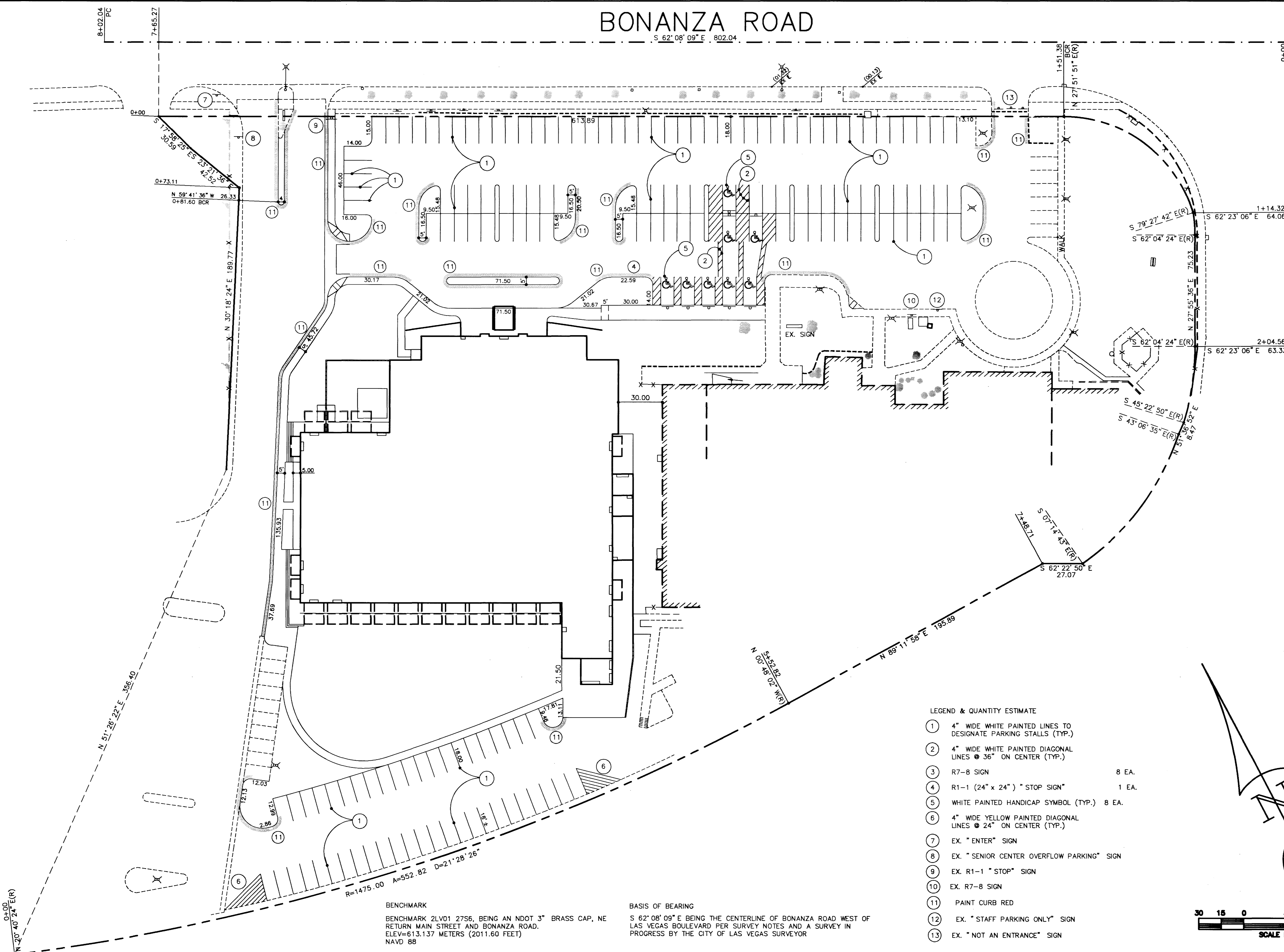


BONANZA ROAD

S 62° 08' 09" E 802.04

L.V. BLVD.

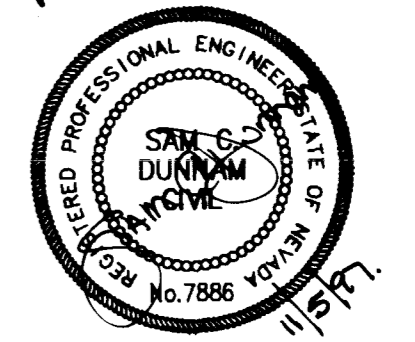
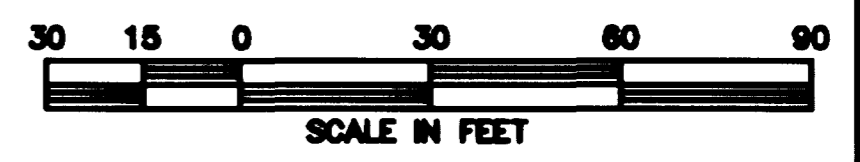


LEGEND & QUANTITY ESTIMATE

- ① 4" WIDE WHITE PAINTED LINES TO DESIGNATE PARKING STALLS (TYP.)
- ② 4" WIDE WHITE PAINTED DIAGONAL LINES @ 36" ON CENTER (TYP.)
- ③ R7-8 SIGN 8 EA.
- ④ R1-1 (24" x 24") " STOP SIGN" 1 EA.
- ⑤ WHITE PAINTED HANDICAP SYMBOL (TYP.) 8 EA.
- ⑥ 4" WIDE YELLOW PAINTED DIAGONAL LINES @ 24" ON CENTER (TYP.)
- ⑦ EX. "ENTER" SIGN
- ⑧ EX. "SENIOR CENTER OVERFLOW PARKING" SIGN
- ⑨ EX. R1-1 "STOP" SIGN
- ⑩ EX. R7-8 SIGN
- ⑪ PAINT CURB RED
- ⑫ EX. "STAFF PARKING ONLY" SIGN
- ⑬ EX. "NOT AN ENTRANCE" SIGN

BENCHMARK
 BENCHMARK 2LV01 2756, BEING AN NDOT 3" BRASS CAP, NE RETURN MAIN STREET AND BONANZA ROAD.
 ELEV=613.137 METERS (2011.60 FEET)
 NAVD 88

BASIS OF BEARING
 S 62° 08' 09" E BEING THE CENTERLINE OF BONANZA ROAD WEST OF LAS VEGAS BOULEVARD PER SURVEY NOTES AND A SURVEY IN PROGRESS BY THE CITY OF LAS VEGAS SURVEYOR



NO.	DATE	REVISION

DUNNAM CIVIL ENGINEERS
 3005 SPRING MOUNTAIN ROAD
 SUITE 82
 LAS VEGAS, NV 89135
 (702) 387-0588
 (702) 387-0465 FAX

DULA POOL

TRAFFIC PLAN

C8

DULA01T
 -27.82694' 1" = 30'

OF NINE

2868

674-22

