

CONSTRUCTION NOTES

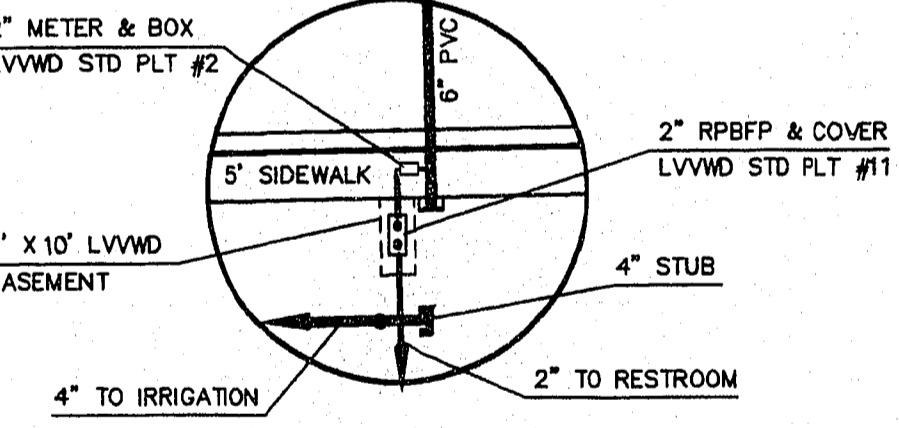
- ⑥ 5' x 10' LVVWD EASEMENT
- ⑦ INSTALL 1-2" WATER METER & RPBFP SEE DETAIL THIS SHEET
- ⑧ CONTRACTOR TO MAINTAIN 3' MIN COVER OVER SEWER LINE
- ⑨ INSTALL 6" PVC SEWER LINE AND CONNECT TO EX. SEWER
- ⑩ 1-6" VALVED, WET TAP TO EXISTING 12" WATER LINE W/ 6"x12" TAPPING SLEEVE
- ⑪ INSTALL 6" PVC SEWER LINE W/ C.O. EVERY 100'
- ⑫ INSTALL 2" PVC WATER LINE W/ 3' MINIMUM COVER

NOTE

SEE PHASING PLAN, SHEET 3 OF 24, FOR ON-SITE PHASING. SIDEWALKS SHOWN ON THIS PLAN ARE FOR PHASE 1 AND PHASE 2 DEVELOPMENT.

NOTE

UNIT PRICE FOR "WATER SERVICE" INCLUDES ALL WORK WITHIN THE PUBLIC R/W INCLUDING TAPPING THE MAIN, METER AND METER BOX, AND R.P. BACKFLOW PREVENTOR.
 UNIT PRICE BID FOR "SEWER SERVICE" INCLUDES TAP AT MAIN AND LATERAL FROM MAIN TO C.O. LOCATED 5 FOOT BEYOND PROPERTY LINE.



NOTE

SEE SHEET G 2 FOR LVVWD STD. NOTES AND VICINITY MAP FOR THIS PROJECT.

[Signature] 7/22/93
 LVVWD DATE

DATE: 1/05/93 DRAWN BY: K/W DESIGNED BY: K/W CHECKED BY: MRW JOB NO.: 01330120 SCALE: 1"=40'	RECOMMENDED BY: J.R.H. HYTON R.E.#
PENTACORE Engineering, Inc. 6763 West Charleston Boulevard Las Vegas, Nevada 89102 (702) 258-0115	
DEPARTMENT OF PARKS AND LEISURE ACTIVITIES AN SAN SISTER CITY PARK UTILITY PLAN	
SHEET 9 C 6 OF 31	
650.36-V1	