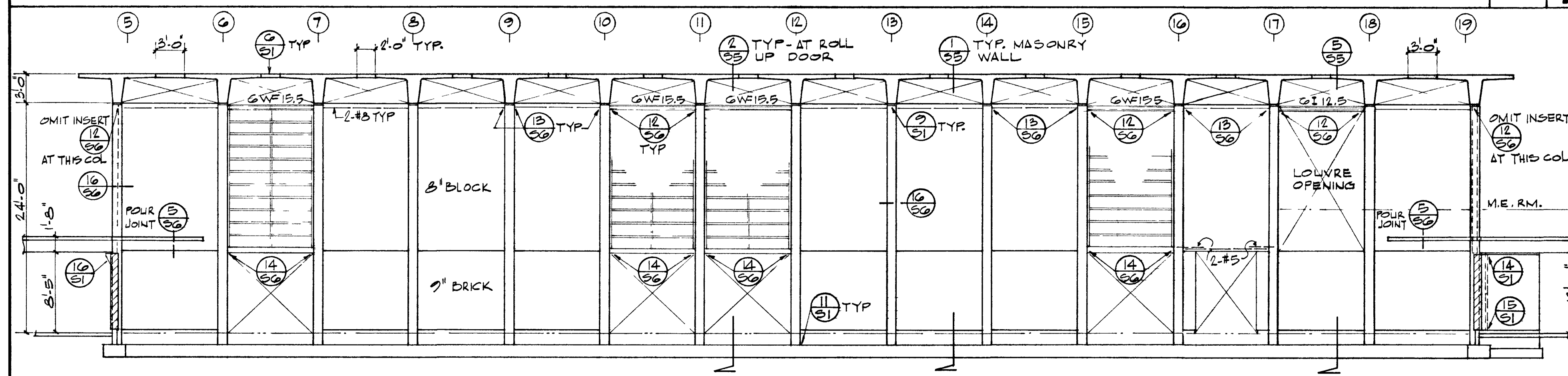
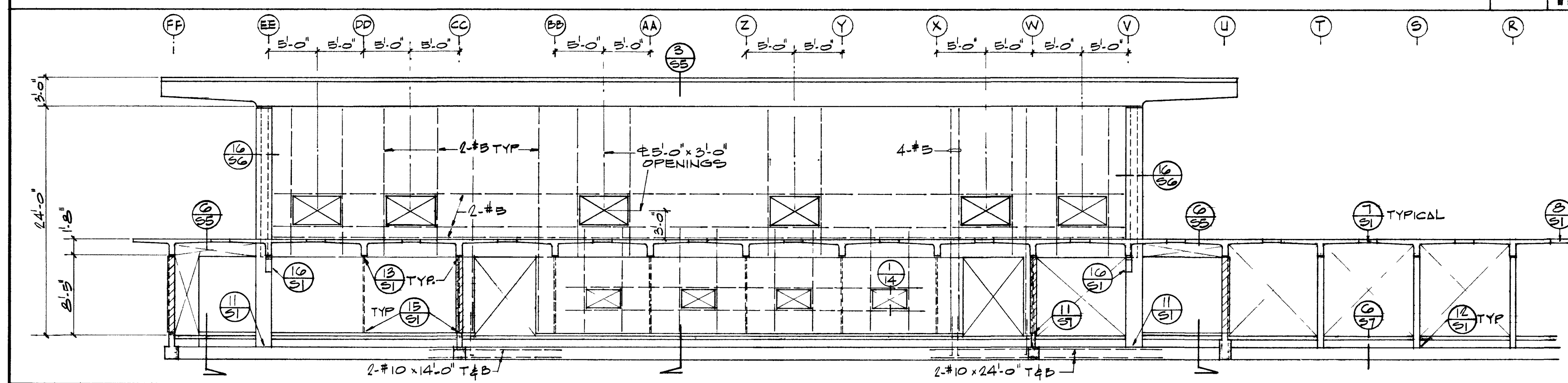


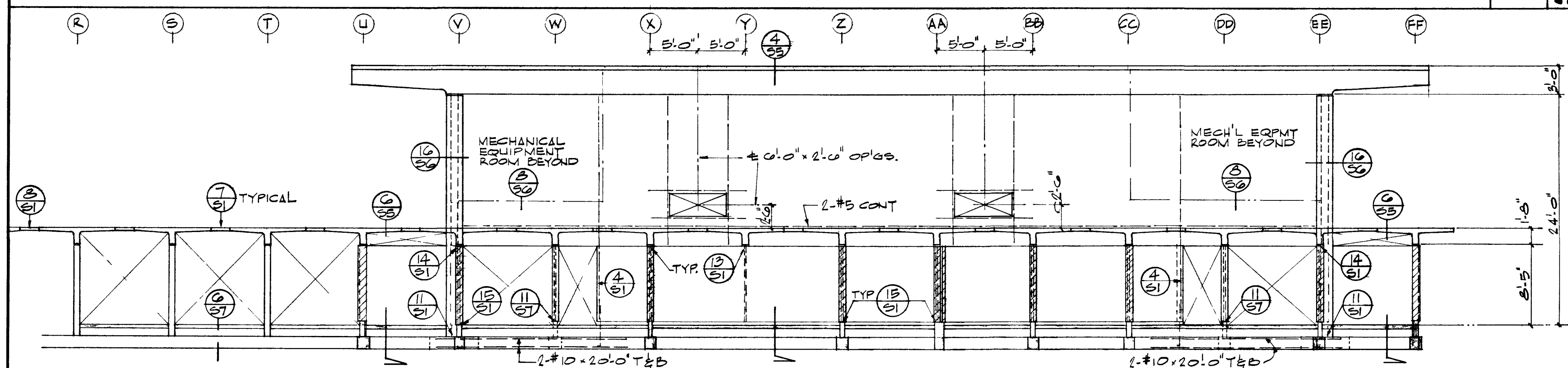
NORTH ELEVATION - GYMNASIUM



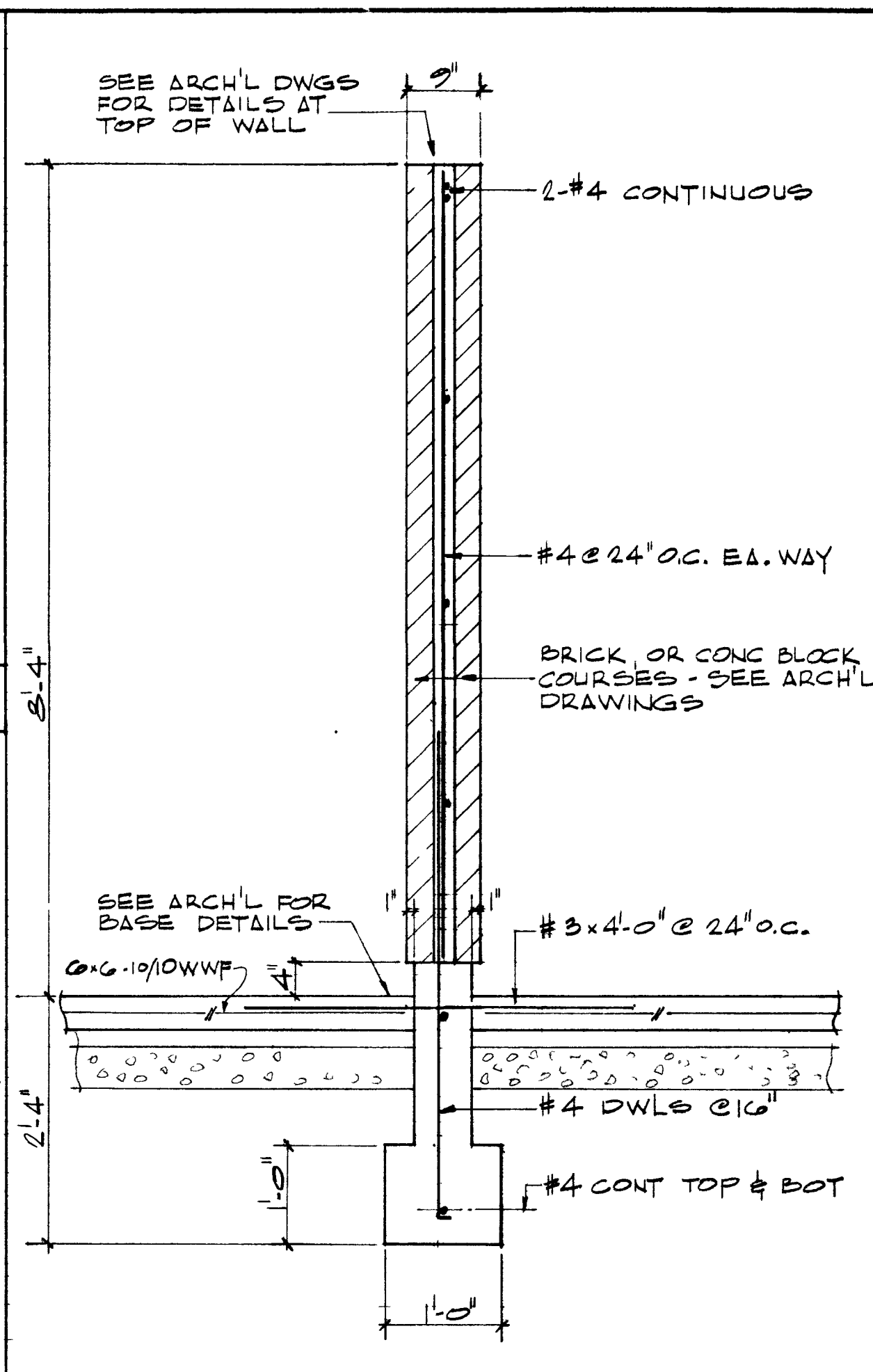
SOUTH ELEVATION - GYMNASIUM



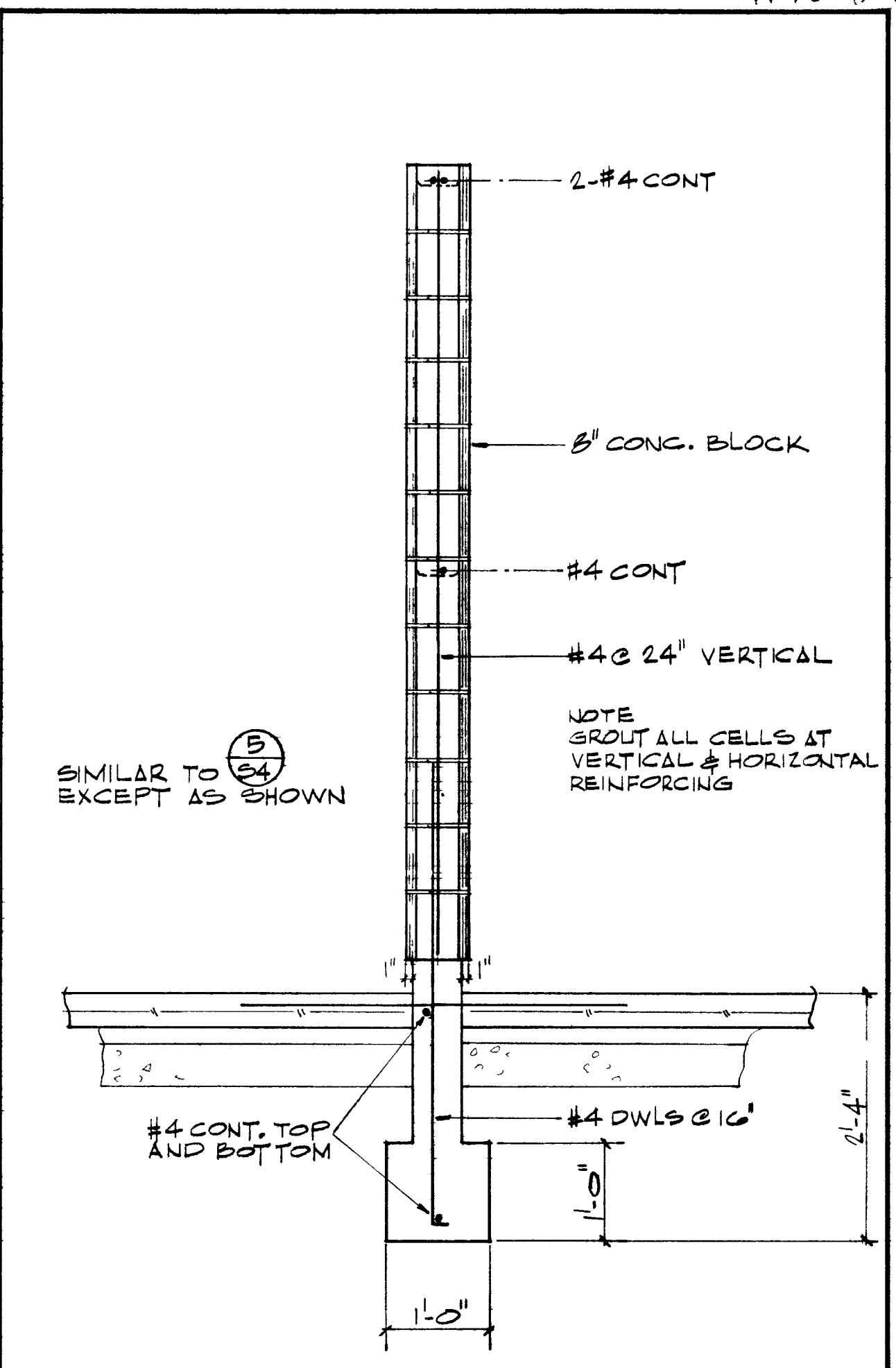
WEST ELEVATION - GYMNASIUM



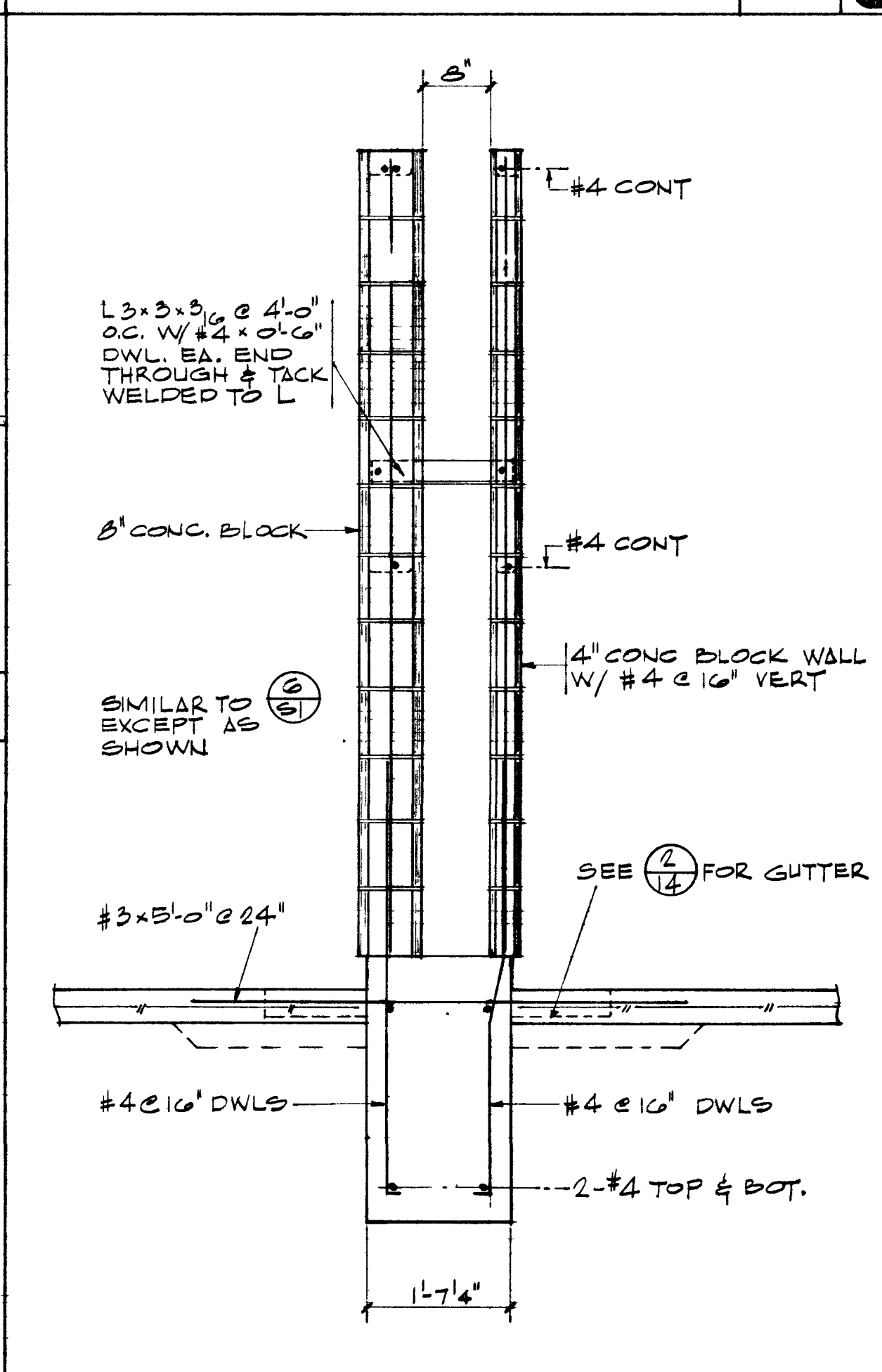
EAST ELEVATION - GYMNASIUM



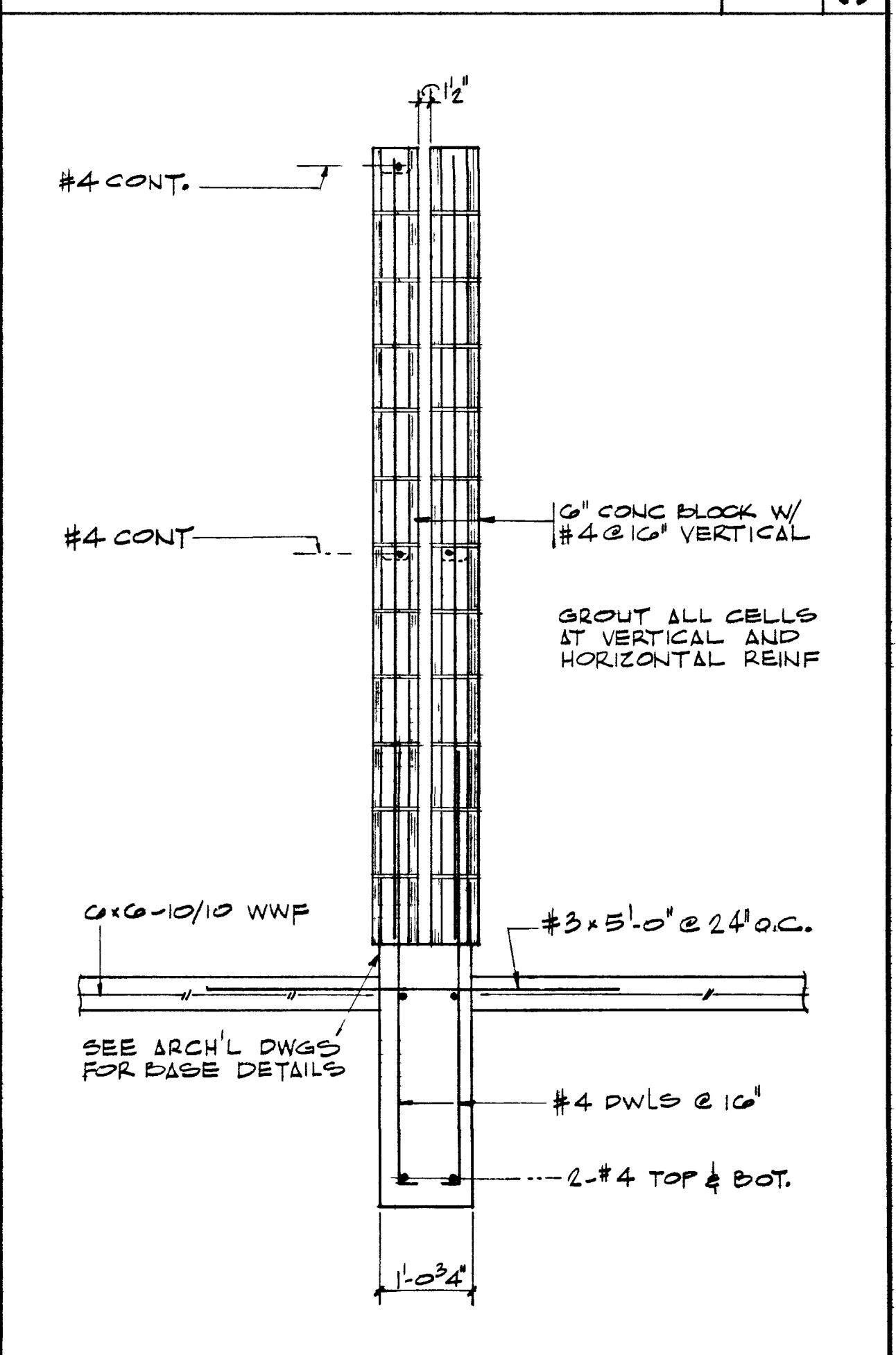
INTERIOR BRICK WALL



INTERIOR BLOCK WALL

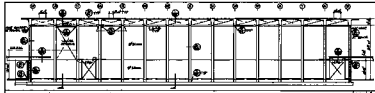


DOUBLE PLUMBING WALL

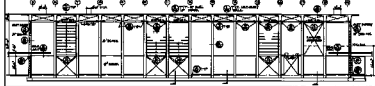


DOUBLE WALL AT GATE

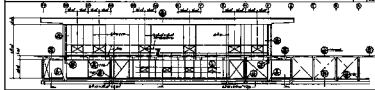
<p>DATE : 10-11-84                  DESIGNED BY : WCT                  DRAWN BY : RdQ                  CHECKED BY : RdQ</p>	<p><b>WILLIAM C. TAYLOR</b>                  STRUCTURAL ENGINEER 702                  PASADENA, CALIF. SY. 3-6023</p>	<p><b>MOFFITT · HENDRICKS · DINGER · PEDERSEN</b>                  ASSOCIATED ARCHITECTS AIA                  LAS VEGAS                  537 EAST SAHARA 735-9169</p>	<p><b>LOS ANGELES</b>                  7330 NORTH FIGUEROA 255-1425</p>	<p><b>WALL ELEVATIONS AND SECTIONS</b>  <b>PHASE B</b></p>	<p><b>DOOLITTLE PARK RECREATION CENTER</b>                  FOR THE CITY OF LAS VEGAS                  LAS VEGAS NEVADA</p>	<p>S-4</p>
---	---	---	---	--	---	------------



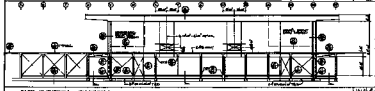
NORTH ELEVATION - STRUCTURE



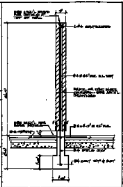
SOUTH ELEVATION - STRUCTURE



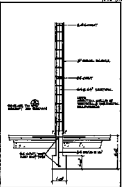
WEST ELEVATION - STRUCTURE



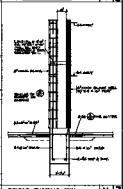
EAST ELEVATION - STRUCTURE



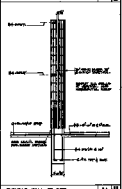
SINGLE BLOCK WALL



DOUBLE BLOCK WALL



DOUBLE MASONRY WALL



DOUBLE WALL AT TOP

DATE: 10-1-48  
DRAWN BY: S.W.C.  
CHECKED BY: S.W.C.  
REVISION: S.W.C.

TRUMAN S. TYSON  
ARCHITECT, 1000 W. WASHINGTON  
LAS VEGAS, NEVADA

MOFFITT - ENDRICKS - DINGER - PEDERSEN  
ASSOCIATED ARCHITECTS AIA  
LAS VEGAS 100 WEST WASHINGTON  
LAS VEGAS 100 WEST WASHINGTON

PHASE B

DOOLITTLE FAIR  
RECREATION CENTER  
LAS VEGAS CITY 25<sup>th</sup> ST. NEVADA  
1947 PLAN B S.W.C. 11-27