

DATE : 12-27-63

DESIGNED BY :

DRAWN BY :

CHECKED BY :

MOFFITT · HENDRICKS · DINGER · PEDERSEN

ASSOCIATED ARCHITECTS AIA

LAS VEGAS LOS ANGELES

537 EAST SAHARA 735-9169 7330 NORTH FIGUEROA 255-1425

POOL DETAILS

DOOLITTLE PARK RECREATION CENTER

FOR THE CITY OF LAS VEGAS

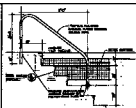
LAS VEGAS NEVADA

SHEET 15

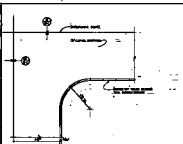
17



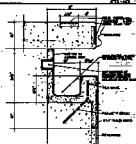
GRADE PLAN & LAYOUT ⑥



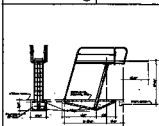
HALLOWAY & STAIRS ⑧



CORNER & SCUM GATED & CORNERS ③



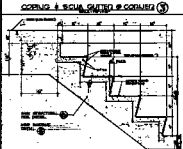
SCUM GATED DETAIL ①



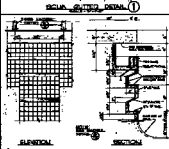
3 AUTO TONGS ⑦



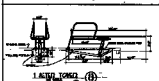
SCUM GATED ⑩



POOL STEPS ④



RECESSED POOL LADDER ②



1 AUTO TONGS ⑪



BOARD CHAIR ⑨

DATE: 10-21-62  
 DRAWN BY:  
 CHECKED BY:

HOFFITT - KROENIG - DINIEN - PEDERSEN  
 ARCHITECTS ASSOCIATES AIA  
 211 TRASK  
 SAN FRANCISCO CALIFORNIA

POOL DETAILS

DOOLITTLE PARK  
 RECREATION CENTER  
 LAS VEGAS NEVADA

NUMBER 15  
 17