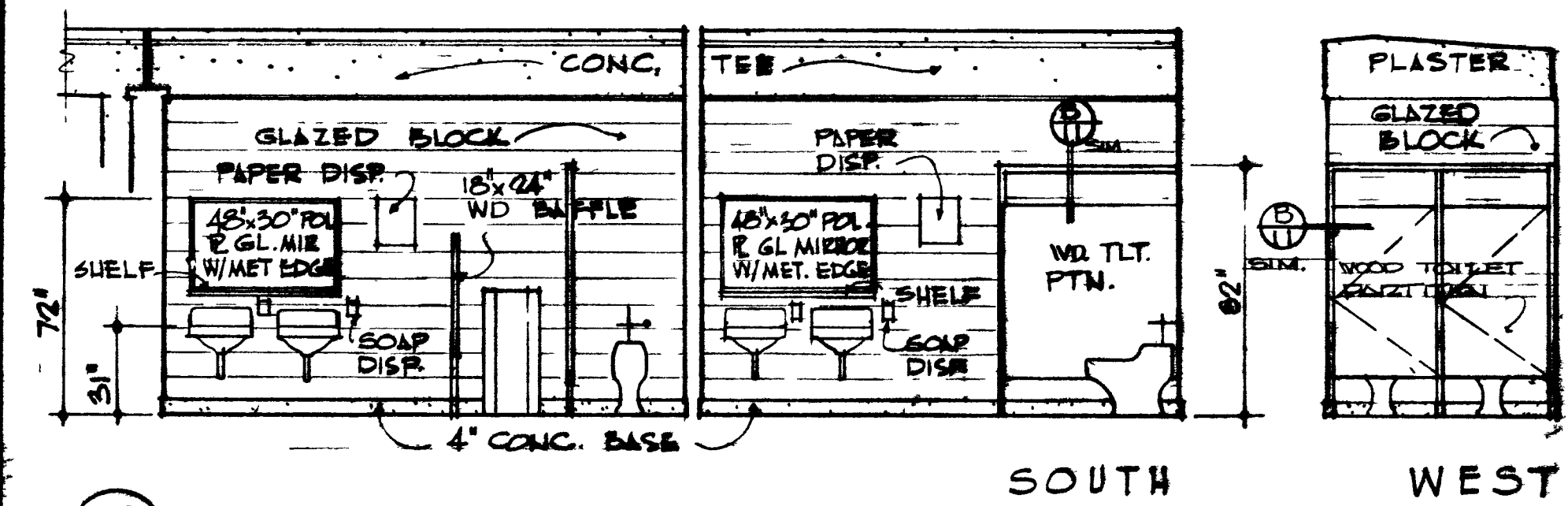
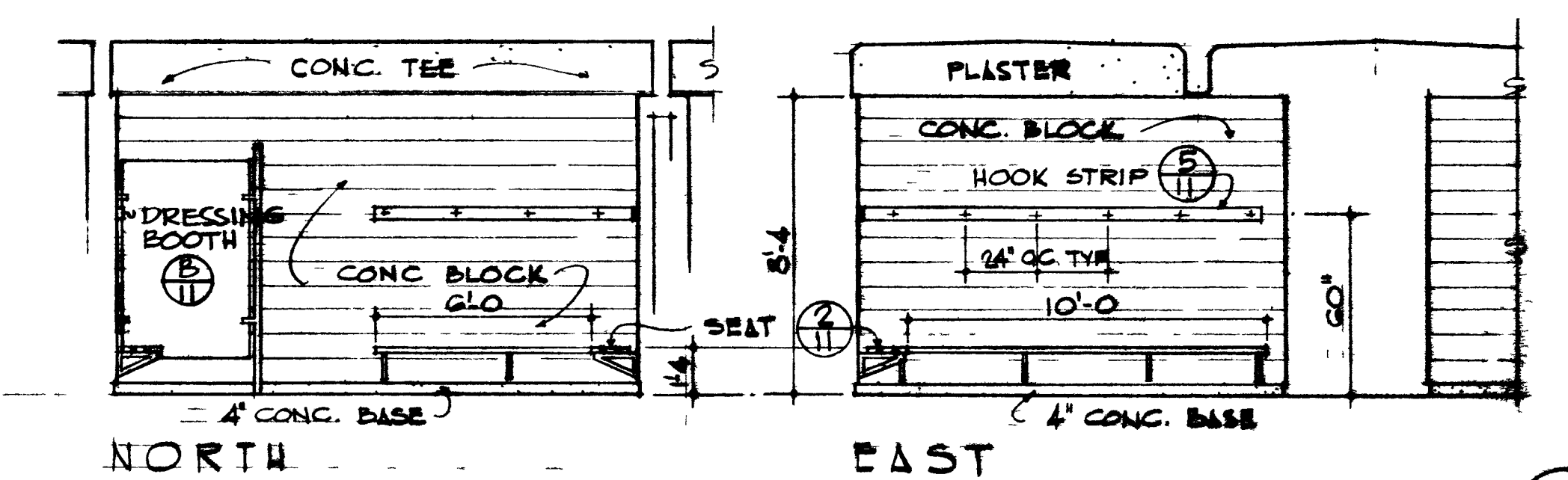


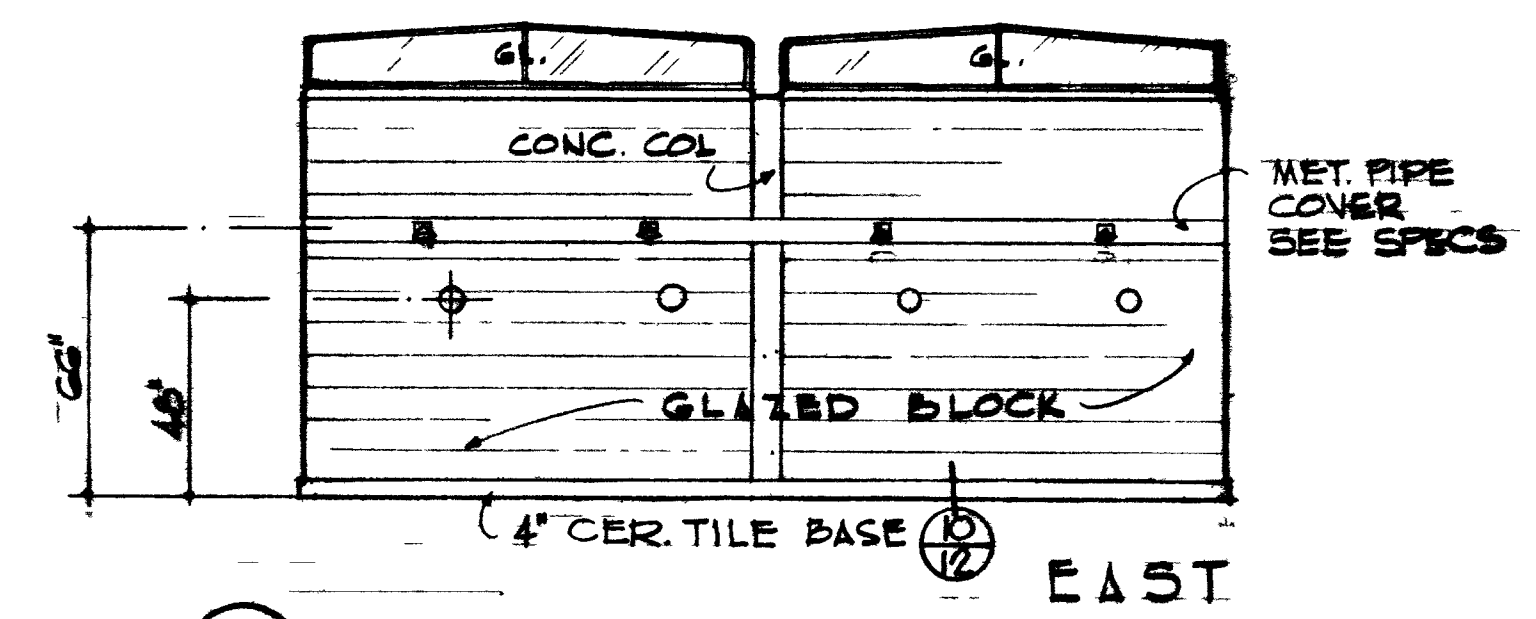
11 BOYS TOILET SOUTH



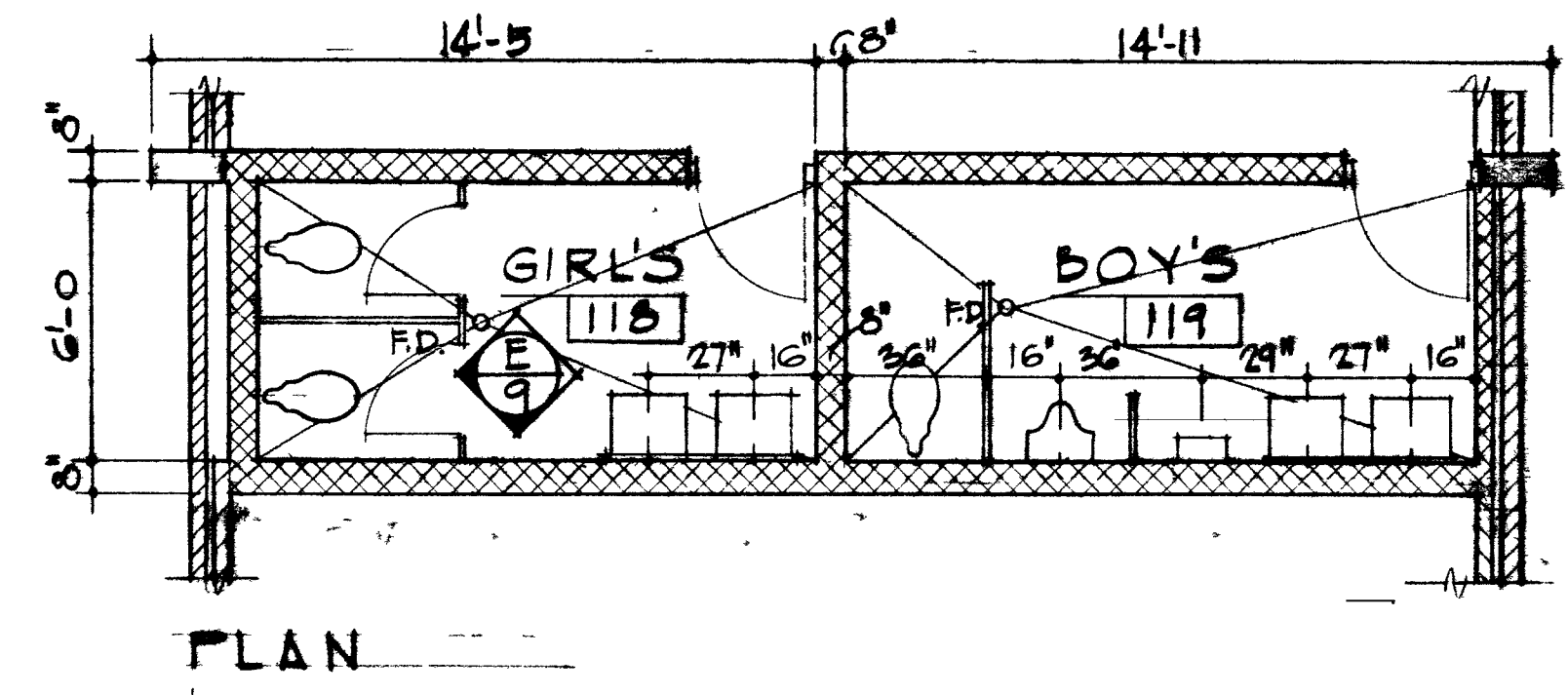
12 BOYS GIRLS SOUTH WEST



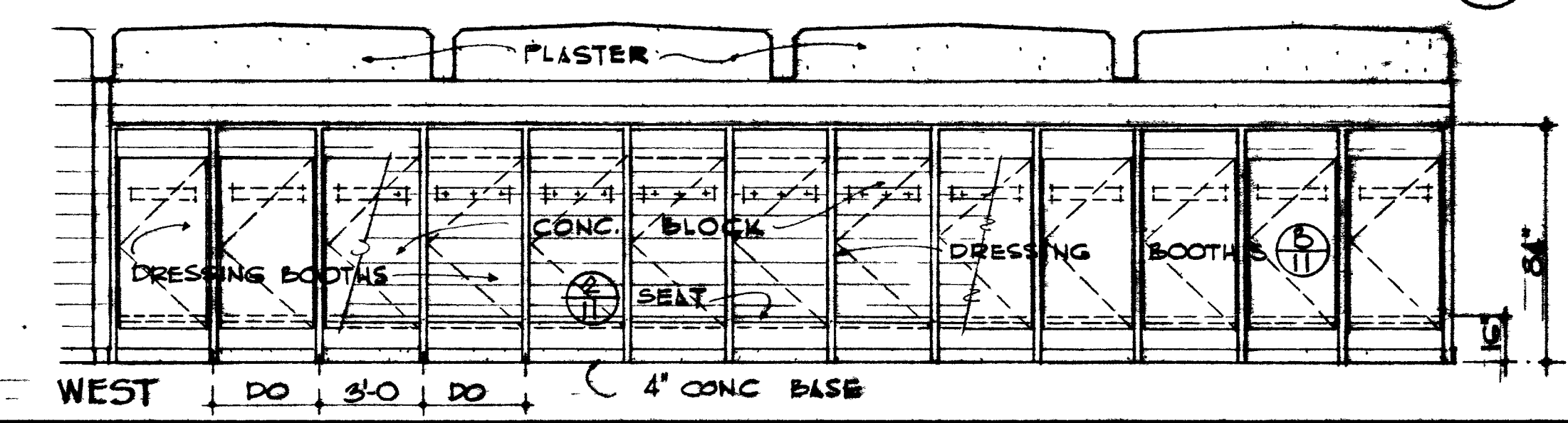
13 NORTH EAST GIRLS LOCKER



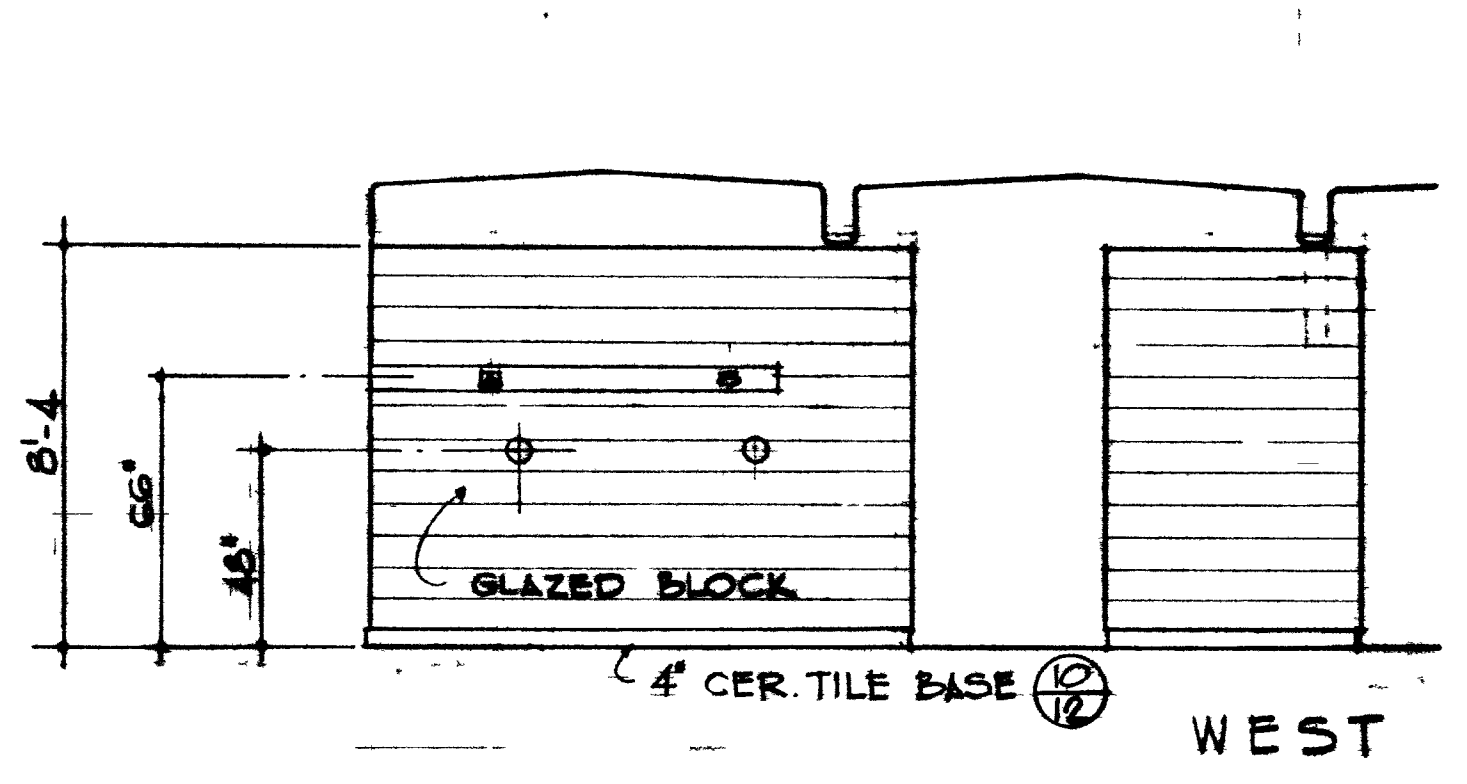
14 BOYS SHOWER EAST



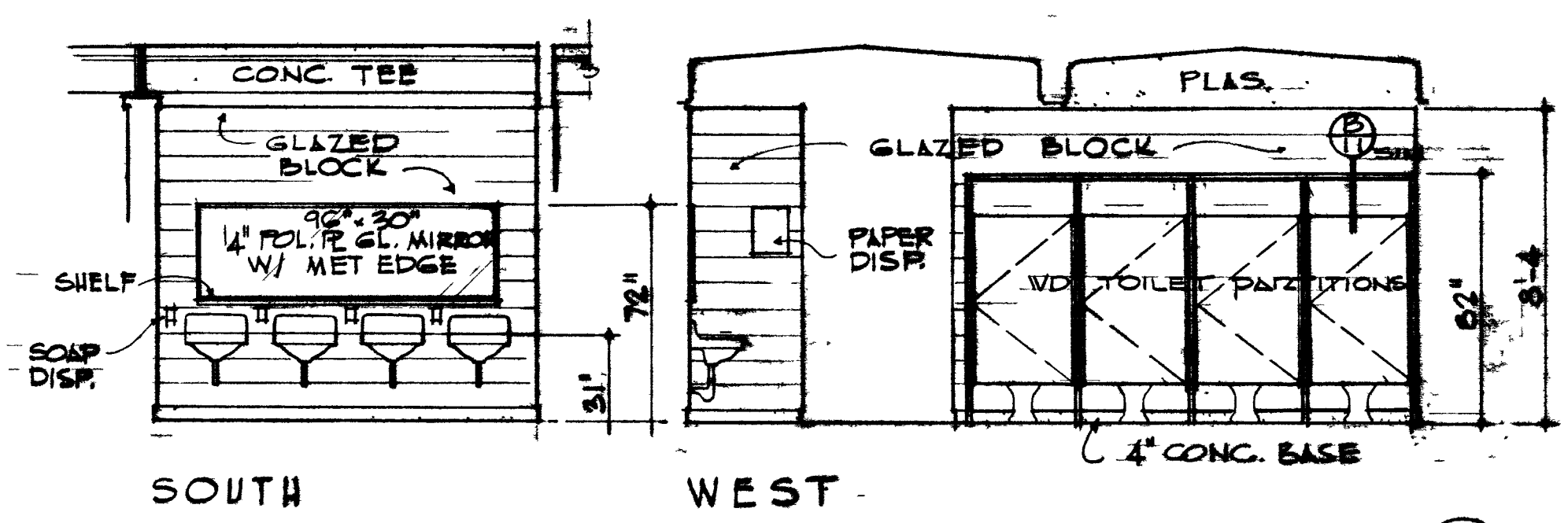
15 PLAN GIRLS & BOYS TOILET



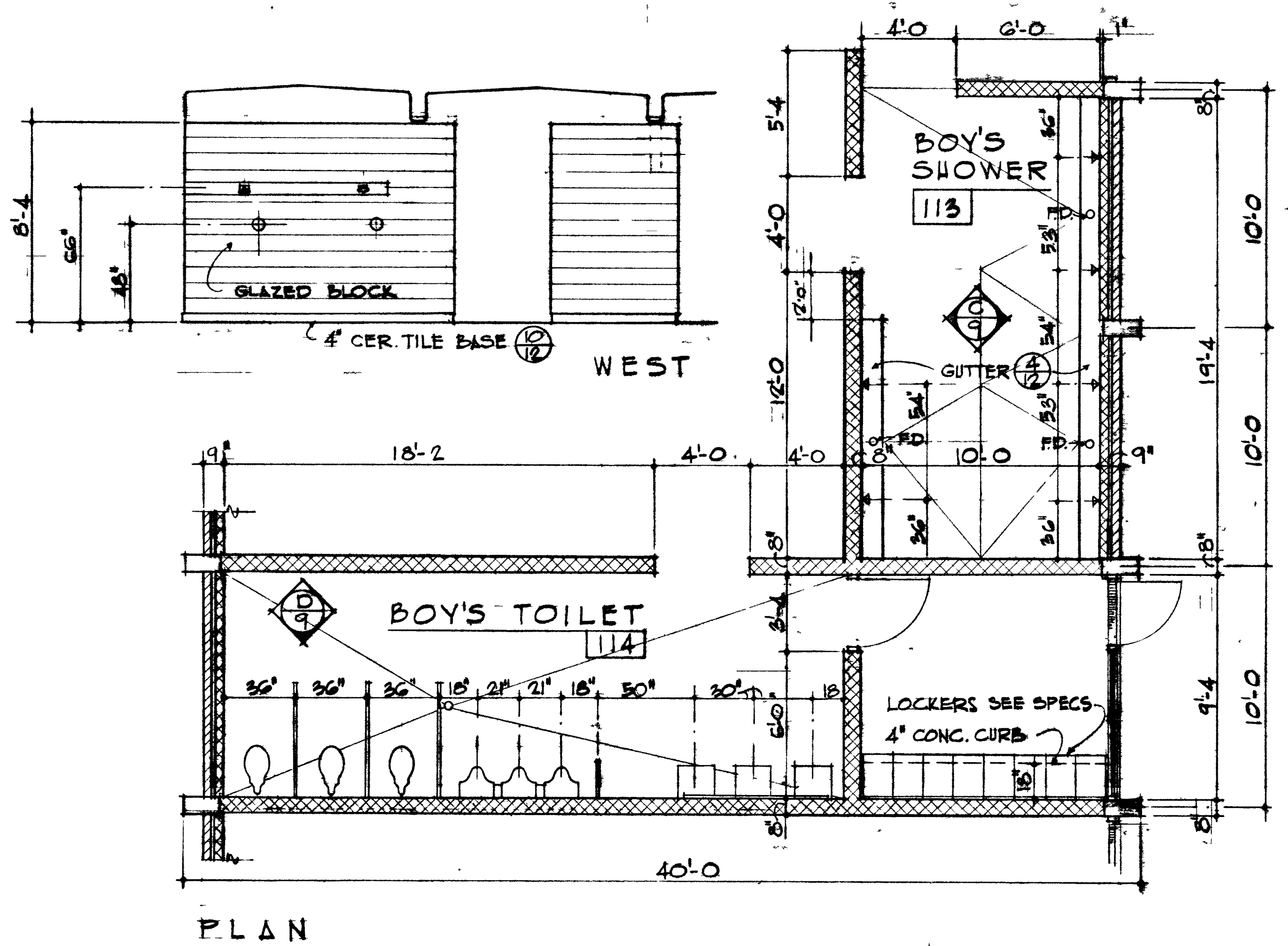
WEST DO 3'-0 DO 4' CONC. BASE



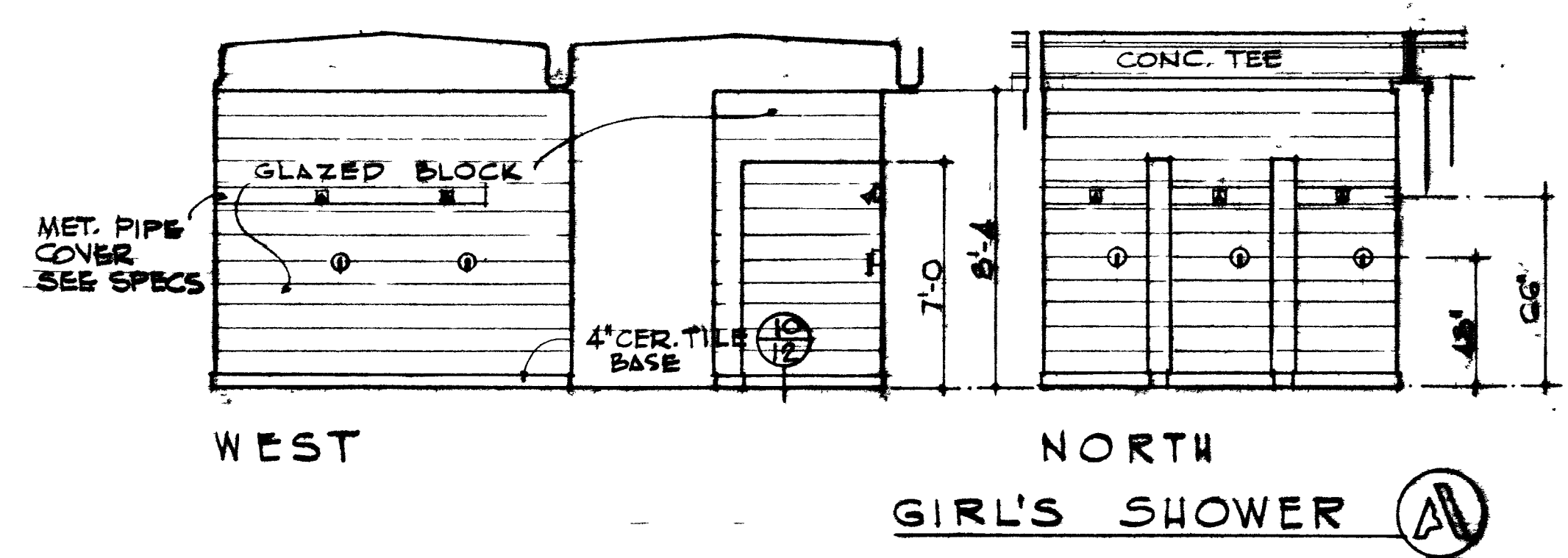
16 WEST



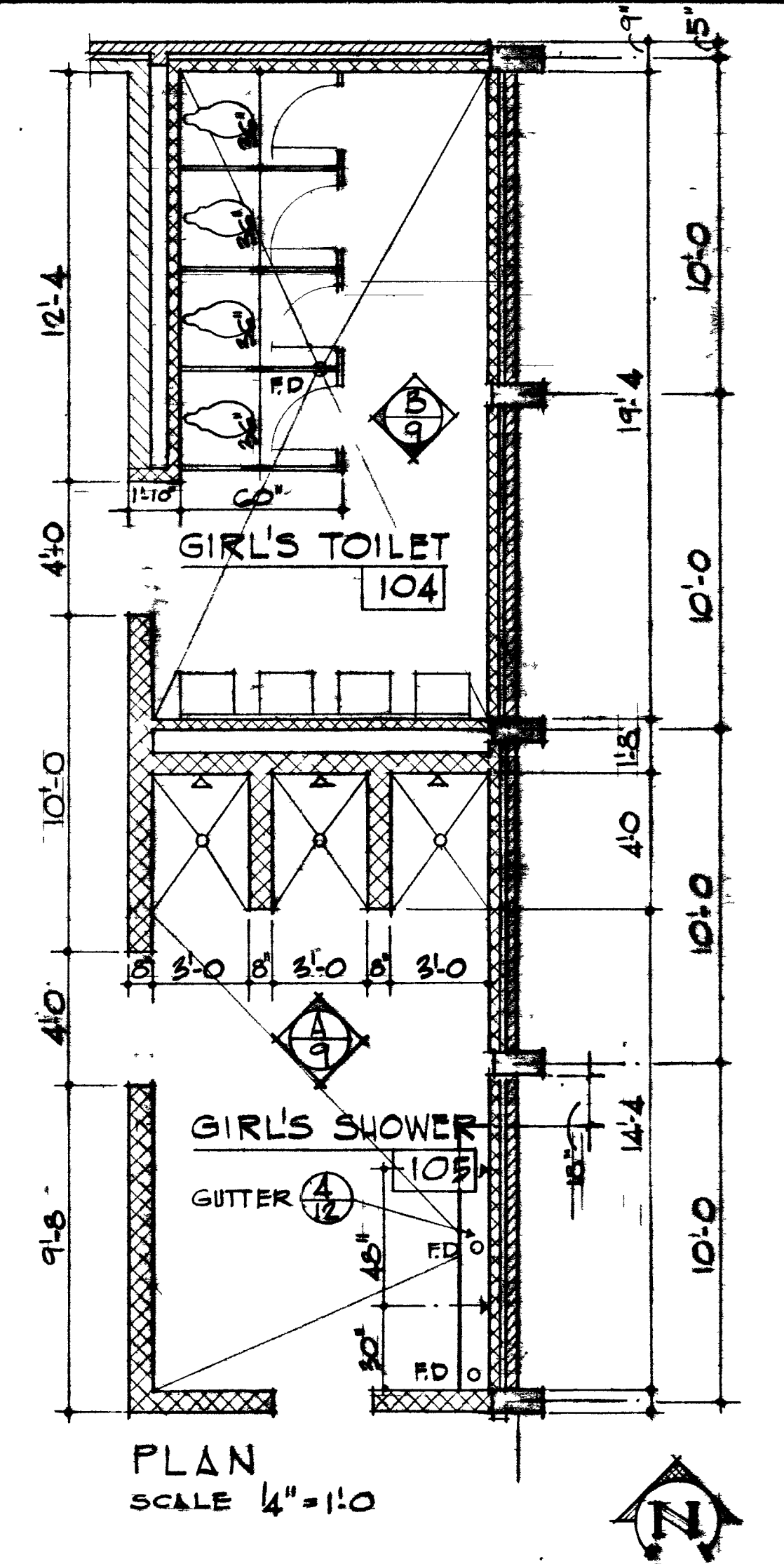
17 SOUTH WEST GIRLS TOILET



18 PLAN



19 WEST NORTH GIRLS SHOWER



20 PLAN SCALE 1/4"=1'-0

NOTE: ALL DETAILS AT SCALE 1/4"=1'-0

DATE : 12-27-63
 DESIGNED BY :
 DRAWN BY :
 CHECKED BY :

MOFFITT · HENDRICKS · DINGER · PEDERSEN
 ASSOCIATED ARCHITECTS AIA
 LAS VEGAS LOS ANGELES
 537 EAST SAHARA 735-9169 7330 NORTH FIGUEROA 255-1425

INTERIOR ELEVATIONS

DOOLITTLE PARK
 RECREATION CENTER
 FOR THE CITY OF LAS VEGAS
 LAS VEGAS NEVADA

SHEET 9
 17



11 BOYS TOILET SOUTH



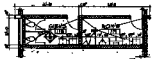
12 BOYS GIRLS TOILET WEST



13 GIRLS LOCKER EAST



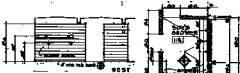
14 BOYS SHOWER EAST



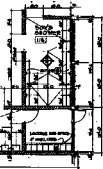
15 PLAN GIRLS & BOYS TOILET



16 PLAN GIRLS LOCKER



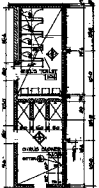
17 BOYS SHOWER WEST



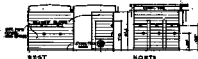
18 PLAN BOYS SHOWER



19 GIRLS TOILET WEST



20 PLAN GIRLS SHOWER



21 BOYS SHOWER WEST

22 BOYS SHOWER NORTH



23 GIRLS SHOWER NORTH

DATE: 4-27-48
 DRAWN BY:
 CHECKED BY:

HOFFITT - HENDRICKS - DINWEN - PEDERSEN
 ASSOCIATES ARCHITECTS AIA
 LAS VEGAS 400 WEST WASHINGTON
 LAS VEGAS 400 WEST WASHINGTON

SECTION ELEVATIONS

DOOLITTLE PARK
 RECREATION CENTER
 LAS VEGAS 400 WEST WASHINGTON NEVADA

17