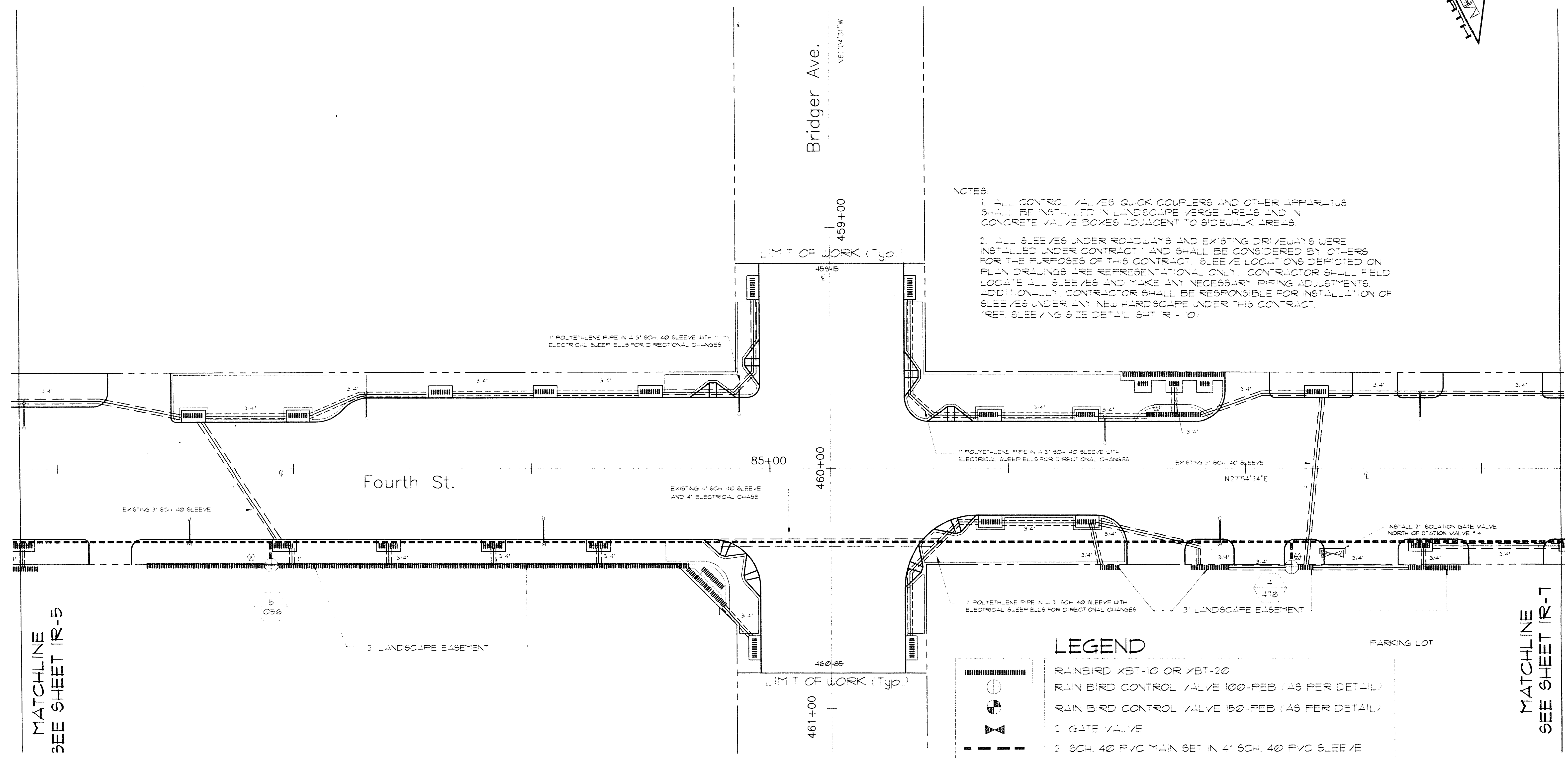


NOTES:

1. ALL CONTROL VALVES, QUICK COUPLERS AND OTHER APPARATUS SHALL BE INSTALLED IN LANDSCAPE MERGE AREAS AND IN GATE VALVE BOXES ADJACENT TO SIDEWALK AREAS.
2. ALL SLEEVES UNDER ROADWAYS AND EXISTING DRIVEWAYS WERE INSTALLED UNDER CONTRACT 1 AND SHALL BE CONSIDERED BY OTHERS FOR THE PURPOSES OF THIS CONTRACT. SLEEVE LOCATIONS DEPICTED ON ALL DRAWINGS ARE REPRESENTATIONAL ONLY. CONTRACTOR SHALL FIELD LOCATE ALL SLEEVES AND MAKE ANY NECESSARY PIPING ADJUSTMENTS. ADDITIONALLY, CONTRACTOR SHALL BE RESPONSIBLE FOR INSTALLATION OF SLEEVES UNDER ANY NEW LANDSCAPE UNDER THIS CONTRACT. (SEE SLEEVING SHEET IR-10)



LEGEND

- RAIN BIRD XBT-10 OR XBT-20
- RAIN BIRD CONTROL VALVE 100-PEB (AS PER DETAIL)
- RAIN BIRD CONTROL VALVE 150-PEB (AS PER DETAIL)
- 2\" GATE VALVE
- 2\" SCH. 40 PVC MAIN SET IN 4\" SCH. 40 PVC SLEEVE
- 6\" SCH. 40 PVC LATERAL PIPING (SIZES AS SHOWN)
- EXISTING IRRIGATION SLEEVE (UNDER ROADWAYS AND DRIVEWAYS); INSTALLED AS PART OF CONTRACT 1.
- NEW IRRIGATION SLEEVE (UNDER NEW LANDSCAPE) INSTALLED AS PART OF THIS CONTRACT.
- RAIN BIRD QUICK COUPLER VALVE (44NP)
- RAIN BIRD CLUSTER CONTROL UNIT #CCU-J-PH-TW-66
- RAIN BIRD SATELLITE CONTROLLER PAR 16-TW-66
- EXISTING NEW WATER METER (REFER TO PLANS)
- 2\" BACKFLOW PREVENTION ASSEMBLY (CLA-VAL RP-4, CONBRACO 40-208-A2, OR EQUAL)

MATCHLINE
SEE SHEET IR-7

MATCHLINE
SEE SHEET IR-5

Avoid cutting underground utility lines. It's costly.
Call before you Dig.
1-800-227-2600
(UNDERGROUND UTILITY ALERT PLAN)

NO.	REVISIONS	DATE	BY

William D. Marcelli
9-1-95

Kimley-Horn and Associates, Inc.
Las Vegas, Nevada © 1994

DESIGNED BY URG
DRAWN BY DD/WSW
CHECKED BY BW
NOTE BOOK NO.

DOWNTOWN CORRIDOR IMPROVEMENTS
CITY OF LAS VEGAS DEPT. OF PUBLIC WORKS
LAS VEGAS, NEVADA
CONTRACT 3 - 4TH STREET
CHARLESTON BLVD. TO STEWART AVE.

DATE 9/1/95
SCALE 1"=20'

IRRIGATION PLAN
STA. 81+84 TO STA. 88+34

DWG. NO. 107-V-2288A
FILE NO. 9903.02
IR-6
SHEET 26 OF 49

20-2-95