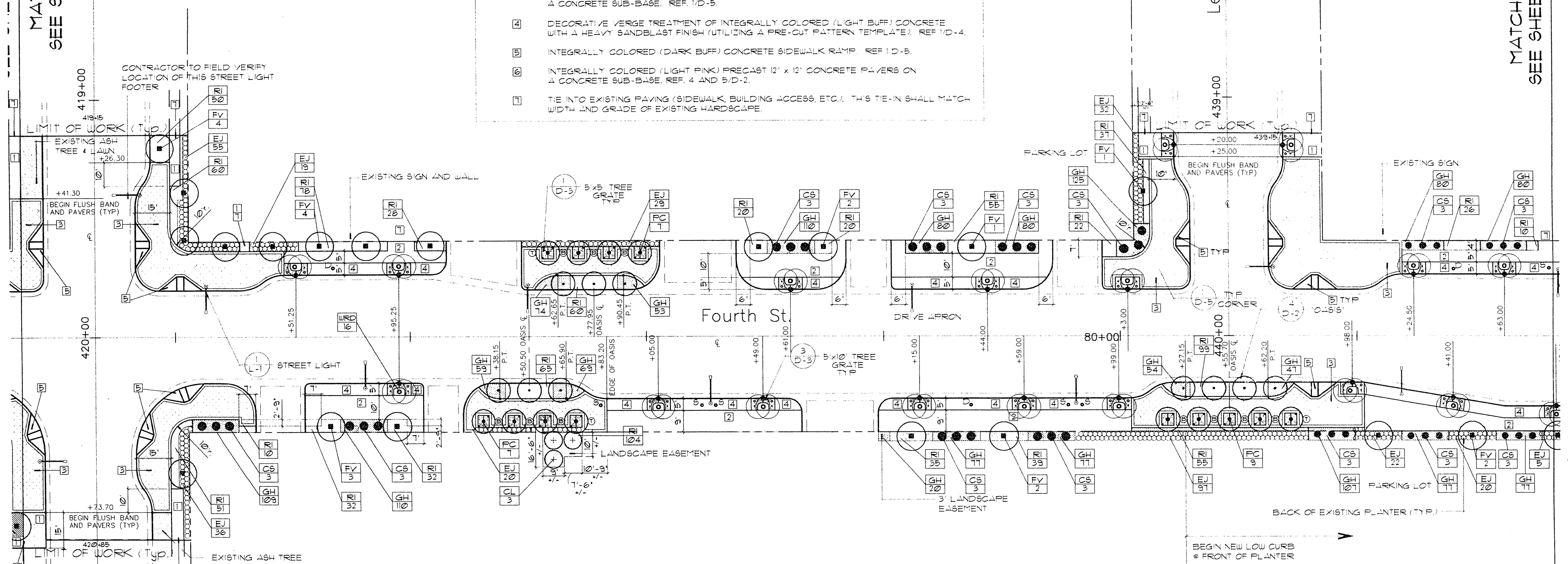


MATCHLINE  
SEE SHEET HS-4  
Clark Ave.

MATCHLINE  
SEE SHEET HS-6

HARDSCAPE SURFACE TREATMENTS

- HARDSCAPE DESCRIPTION**
- 1 NATURAL GREY CONCRETE WITH LIGHT BROOM FINISH AND TOOLED JOINTS AS SHOWN.
  - 2 INTEGRALLY COLORED (LIGHT BUFF), TOOLED, AND TROUELED CONCRETE WITH A LIGHT BROOM FINISH. REF. 1, 2, AND 3/D-2.
  - 3 INTEGRALLY COLORED (LIGHT PINK), PRE-CAST 12' x 12' CONCRETE PAVERS ON A CONCRETE SUB-BASE. REF. 1/D-5.
  - 4 DECORATIVE VERGE TREATMENT OF INTEGRALLY COLORED (LIGHT BUFF) CONCRETE WITH A HEAVY SANDBLAST FINISH (UTILIZING A PRE-CUT PATTERN TEMPLATE). REF 1/D-4.
  - 5 INTEGRALLY COLORED (DARK BUFF) CONCRETE SIDEWALK RAMP. REF 1/D-5.
  - 6 INTEGRALLY COLORED (LIGHT PINK) PRE-CAST 12' x 12' CONCRETE PAVERS ON A CONCRETE SUB-BASE. REF. 4 AND 5/D-2.
  - 7 TIE INTO EXISTING PAVING (SIDEWALK, BUILDING ACCESS, ETC.). THIS TIE-IN SHALL MATCH WIDTH AND GRADE OF EXISTING HARDSCAPE.



Plant/Materials Legend  
4TH STREET IMPROVEMENTS PROJECT

	Sym.	Common Name	Botanical Name	Size/Remarks	MISC.	Sym.	Common Name	Size/Remarks
TREES	CI	CANARY ISLAND DATE PALM	Phoenix canariensis	10' BT, Specimen	S • EXISTING SINGLE-HEAD PARKING METER D • EXISTING DOUBLE-HEAD PARKING METER [Symbol] 5' x 10' TREE GRATE (REF. DETAIL 3/D-3) [Symbol] 5' x 5' TREE GRATE (REF. DETAIL 1/D-3)	NB	NATIVE SANDSTONE BOULDERS	2' x 2' x 2'
	PC	CHINESE PISTACHE	Pistacia chinensis	48" Box, 3- 3 1/2' Cal, 14 - 16' x 8', 7' C.T. min. Matched		⊗	PRE-CAST CONCRETE BENCHES	REF SPECS
	CL	DESERT WILLOW	Chilopsis linearis	9' - 10' x 3 - 4', 24' Box		⊙	PRE-CAST CONCRETE TRASH CANS	REF SPECS
	CS	ITALIAN CYPRESS	Cupressus sempervirens 'Glauc'	36' box, 10' Matched		[RI]	PLANT ABBREVIATION (Typ.)	
	YB	JOSHUA TREE	Yucca brevifolia	8' - 10' B.R.		[T2]	PLANT QUANTITY (Typ.)	
	WRD	MEXICAN FAN PALM	Washingtonia robusta	Double Trunk Specimens, 18-20' B.T. Min. both trunks, Skinned				
	WR	MEXICAN FAN PALM	Washingtonia robusta	10' B.T. Min. Skinned				
	FV	RIO GRANDE ASH	Fraxinus velutina 'Rio Grande'	48" Box, 16' x 8', 7' C.T. min. Matched				
	FVA	RIO GRANDE ASH	Fraxinus velutina 'Rio Grande'	36" Box, 14' x 7', 7' C.T. min. Matched				
	SHRUBS	EJ	EVERGREEN EUONYMUS	Euonymus japonica		5 gal, 20' x 18', 24' OC.		
EJ5		VARIEGATED EUONYMUS	Euonymus japonica 'Silver King'	5 gal, 20' x 18', 24' OC.				
FS		OCOTILLO	Fouquieria splendens	8 - 10' B.R.				
GH		CLUMPING GAZANIA	Gazania Hybrids 'Mini-Star'	1 gal., Full, 12' OC.				
DAISY								
TY		RED YUCCA	Hesperaloe parviflora	5 gal, 3' x 3', 6' OC.				
TY5		'REGAL MIST' DEER GRASS	Munierbergia capillaris	5 gal, 20' x 18', 36' OC.				
RF		RED FLYCANTHA	Flycantha spp.	5 gal, 4' Trellis, 6' OC.				
RI		DWARF INDIAN HAWTHORN	Raphirolepis indica 'Enchantress'	5 gal, 15' x 15', 18' OC.				

Avoid cutting underground utility lines. It's costly.  
**Call before you Dig.**  
 1-800-227-2800  
 UNDESIGNED SERVICE ALERT ONLY

NO.	REVISIONS	DATE	BY



**Kimley-Horn and Associates, Inc.**  
 Las Vegas, Nevada © 1994

DESIGNED BY URG  
 DRAWN BY DD/WSW  
 CHECKED BY BW  
 NOTE BOOK NO.



DOWNTOWN CORRIDOR IMPROVEMENTS  
 CITY OF LAS VEGAS DEPT. OF PUBLIC WORKS  
 LAS VEGAS, NEVADA  
 CONTRACT 3 - 4TH STREET  
 CHARLESTON BLVD. TO STEWART AVE.

DATE 9/1/95  
 SCALE 1"=20'

HARDSCAPE LAYOUT  
 PLAN (WITH LANDSCAPE)  
 STA. 75+34 TO STA. 81+84

DWG. NO. 107-V-2288A  
 FILE NO. 9903.02  
**HS-5**  
 SHEET 16 OF 49