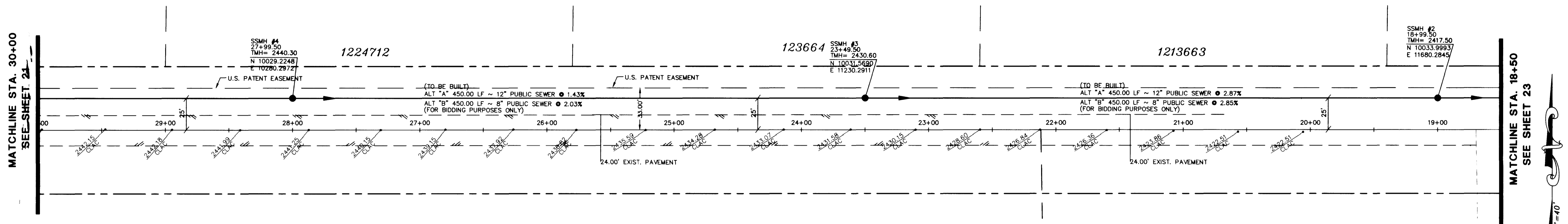


Call before you OVERHEAD 1-702-593-6111

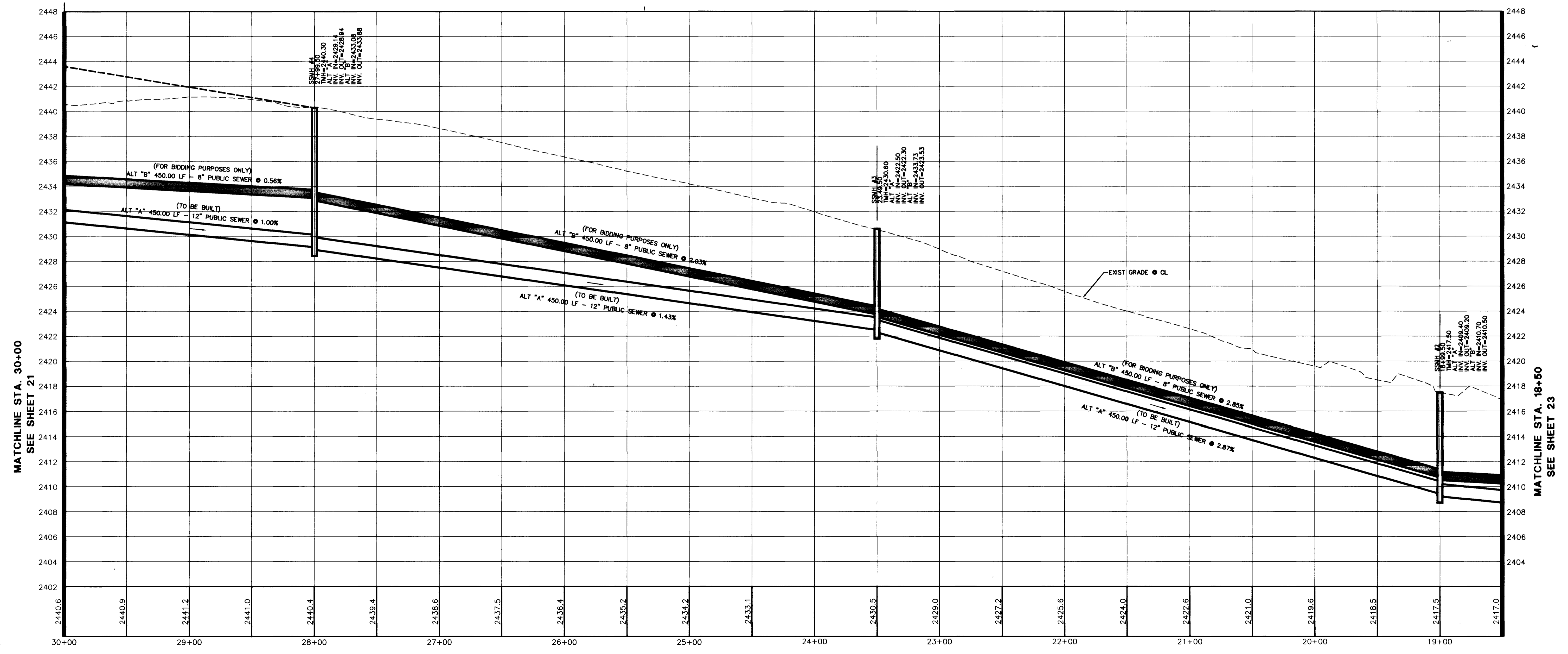
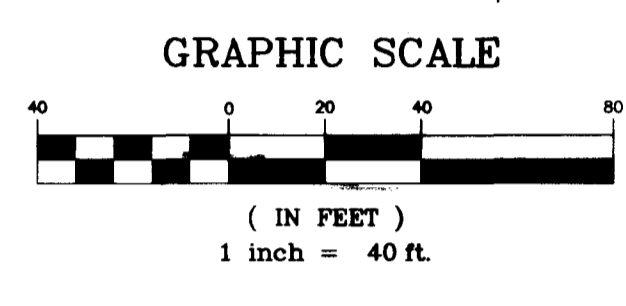
Call before you Dig 1-800-227-2600

BASIS OF BEARINGS
 NORTH 89°41'28" EAST, BEING THE BEARING OF THE NORTH LINE OF THE NORTHEAST QUATER (NE 1/4) OF THE NORTHWEST QUATER (NW 1/4) OF SECTION 8, TOWNSHIP 20 SOUTH, RANGE 50 EAST, M.D.M., CLARK COUNTY, NEVADA, AS SHOWN ON A RECORD OF FILE IN THE IN THE CLARK COUNTY, NEVADA, RECORDER'S OFFICE IN FILE 67 OF SURVEYS, AT PAGE 80

BENCHMARK
 CLARK COUNTY BENCHMARK 1C005C4
 RIVET AND SQUARE ALUMINUM PLATE IN CONC. MONUMENT, 35 SOUTH AND 35 WEST OF CRAIG ROAD AND EL CAPITAN WAY
 ELEVATION NAVD 88 = 742.779 METERS (2436.93 FEET)



ALEXANDER ROAD (PUBLIC)
 SCALE: 1"=40' HORIZ.
 1"=4' VERT.



ALEXANDER ROAD (PUBLIC)
 SCALE: 1"=40' HORIZ.
 1"=4' VERT.

REV	DATE	BY	REASON
AMERICAN WEST HOMES, INC. CITY OF LAS VEGAS, NEVADA			
SEWER PLAN & PROFILE ALEXANDER ROAD			
ESTATES NORTH			
TITLE			
DRAWN BY:	DESIGNED BY:	CHECKED BY:	PROJECT NO:
MCW			4818-B
SHEET 5/28			
SCALE: 1"=40' HORIZ. 1"=4' VERT.			
SHEET SWPP7 22 OF 24 SHEETS			
DRAWING NO. 3074-4593			

R:\cadd\LANDEV\4818\4818\SWPP7SITE.dwg Mod Nov 11 15:06:41 1998 Plotted by: mcw

11727

