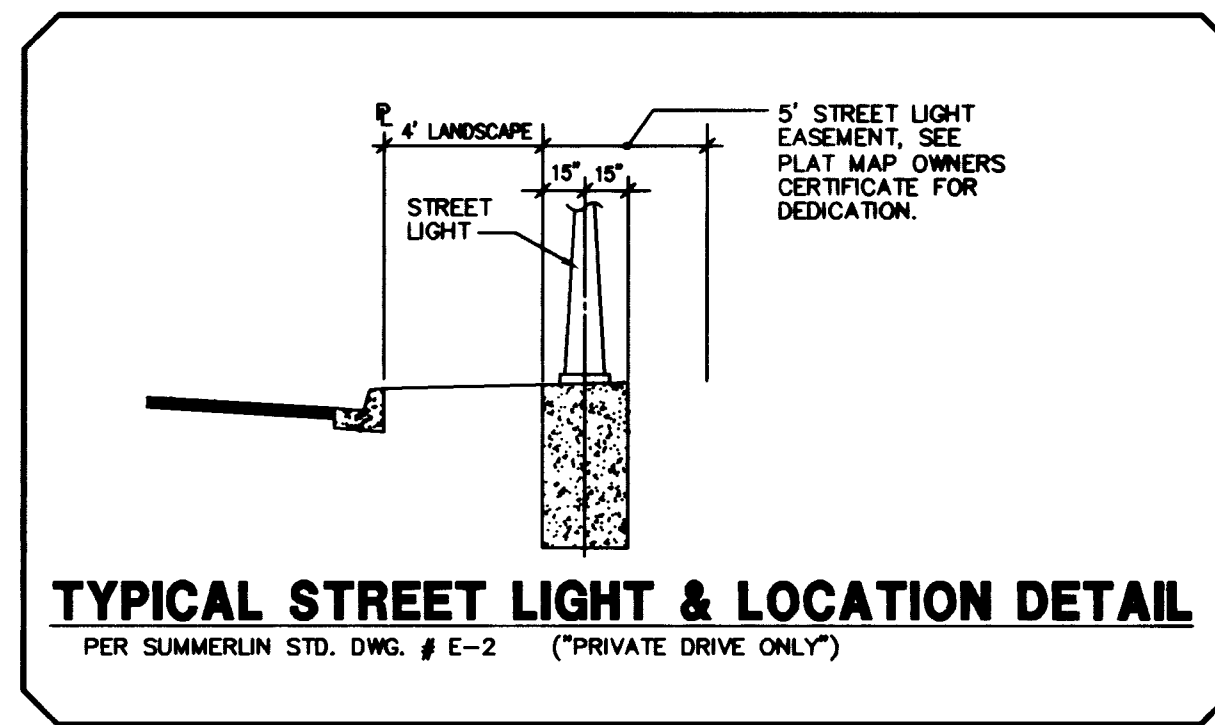


### LVVWD WATER NOTES

- NO WORK SHALL BEGIN UNTIL THE WATER PLANS HAVE BEEN RELEASED FOR CONSTRUCTION BY THE LVVWD. FOLLOWING WATER PLAN APPROVAL, FORTY-EIGHT (48) HOUR NOTICE SHALL BE GIVEN TO THE LVVWD COMMUNICATION SUPPORT CENTER (258-7171) PRIOR TO THE START OF CONSTRUCTION. NOTICE MUST BE GIVEN BY 2:00 P.M. THE BUSINESS DAY PRIOR TO A LVVWD INSPECTION.
- ALL WORK SHALL CONFORM TO LVVWD STANDARD PLATES, DRAWING, AND SPECIFICATIONS AND THE UNIFORM DESIGN AND CONSTRUCTION STANDARDS FOR WATER DISTRIBUTION SYSTEMS (SDACS), LATEST EDITION.
- ALL WORK, EXCEPT AS MODIFIED BY THESE PLANS OR BY NOTE 2, SHALL BE DONE IN ACCORDANCE WITH THE MOST CURRENT DRAFT OR EDITION OF THE UNIFORM STANDARD SPECIFICATIONS FOR PUBLIC WORKS CONSTRUCTION OFF-SITE IMPROVEMENTS, CLARK COUNTY AREA.
- A SINGLE PIPE MATERIAL SHALL BE USED THROUGHOUT THE PROJECT, UNLESS OTHERWISE APPROVED BY THE LVVWD.
- ALL SERVICE LATERALS TWO INCHES (2") IN DIAMETER AND SMALLER SHALL BE COPPER TUBING WITH LVVWD APPROVED SERVICE SADDLES.
- ALL WATER METER BOXES SHALL BE LOCATED OUTSIDE OF DRIVEWAY AREAS.
- ALL VALVES SHALL BE LOCATED OUTSIDE OF DRIVEWAYS, GUTTERS, CURBS AND VALLEY GUTTERS.
- THE FOLLOWING REQUIREMENTS MUST BE MET IN THE EVENT A WATER LINE AND A SANITARY SEWER OR STORM SEWER LINE CROSS:
  - A MINIMUM EIGHTEEN INCH (18") VERTICAL SEPARATION (OUTSIDE TO OUTSIDE) MUST BE MAINTAINED WHEN THE WATER LINE IS INSTALLED OVER THE SANITARY OR STORM SEWER LINE. IF THE VERTICAL SEPARATION CANNOT BE MAINTAINED OR THE WATER LINE MUST BE PLACED UNDER THE SANITARY OR STORM SEWER LINE, THE SANITARY OR STORM SEWER LINE MUST BE CONSTRUCTED WITH ONE OF THE FOLLOWING OR, AS SHOWN ON THESE PLANS:
    - POTABLE WATER SUPPLY QUALITY MATERIAL
    - ENCASEMENT, WITH FOUR INCH (4") CONCRETE (MINIMUM)
    - SLEEVING WITH POTABLE WATER SUPPLY QUALITY PIPE.
- EACH PROVISION MUST EXTEND ALONG THE SANITARY OR STORM SEWER, ON EITHER SIDE OF THE WATER MAIN, A MINIMUM TEN FOOT (10') DISTANCE PERPENDICULAR TO THE EXTERIOR OF THE MAIN.
- WARNING TAPE SHALL BE REQUIRED OVER ALL MAINS, ALL SIX INCH (6") DIAMETER AND LARGER SERVICE LATERALS, AND ANY SERVICE LATERAL NOT INSTALLED PERPENDICULAR TO THE MAIN IN ACCORDANCE WITH STANDARD PLATE NO. 27.
- ALL WATER FACILITIES SHALL BE FILLED, DISINFECTED, PRESSURE TESTED, FLUSHED, FILLED AND AN ACCEPTABLE WATER SAMPLE OBTAINED PRIOR TO CONNECTION TO THE LVVWD'S DISTRIBUTION SYSTEM.
- THE CONTRACTOR MUST OBTAIN ALL METERS TWO INCHES (2") AND SMALLER FROM LVVWD CENTRAL STORES. TELEPHONE 258-3152 FORTY-EIGHT (48) HOURS PRIOR TO PICK-UP.
- CONSTRUCTION MAY INTERRUPT SERVICE, WITH LVVWD APPROVAL AND PROPER NOTIFICATION, BETWEEN THE HOURS OF 10:00 P.M. AND 6:00 A.M. SUNDAY THROUGH THURSDAY, CIRCUMSTANCES THAT MAY REQUIRE TEMPORARY SERVICE FEED MUST HAVE PRIOR LVVWD APPROVAL.
- ALL WATER FACILITY CONSTRUCTION MATERIALS USED MUST BE AS LISTED ON THE LVVWD'S PRE-APPROVED MATERIALS AND MANUFACTURERS LISTING FOR NEW FACILITIES, LATEST REVISION OR SPECIFICALLY APPROVED ON THESE PLANS.

3/98



- ### FITTINGS LEGEND
- 8" TEE
  - 8"x6" TEE
  - 6" GATE VALVE
  - 8" GATE VALVE
  - 12" GATE VALVE
  - 12"x8" REDUCER
  - 2" BLOW-OFF ASSEMBLY W/CAP
  - FIRE HYDRANT ASSY. (UDS PLATE NO. 7)
  - 8" CROSS
  - 8" 45° BEND
  - 8" 22 1/2° BEND
  - 8" 90° BEND
  - 8" 11 1/4° BEND
  - (1) - 6" & (1) - 3" IRRIGATION SLEEVES

Avoid cutting underground utility lines. It's costly.

## Call before you Dig.

**1-800-227-2600**  
UNDERGROUND SERVICE ALERT (USA)

*[Signature]* 11-20-98  
CITY OF LAS VEGAS - FIRE MARSHAL DATE

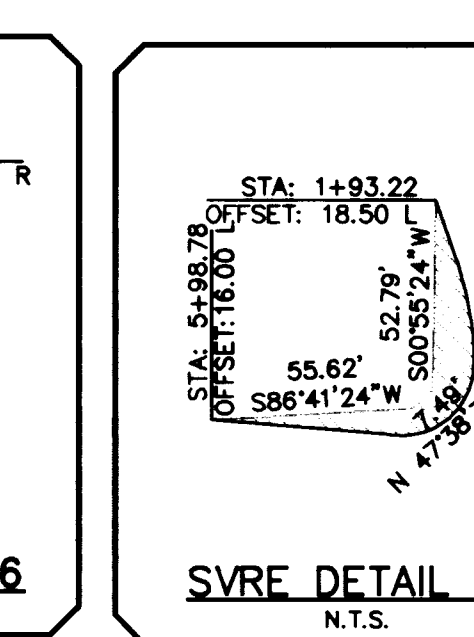
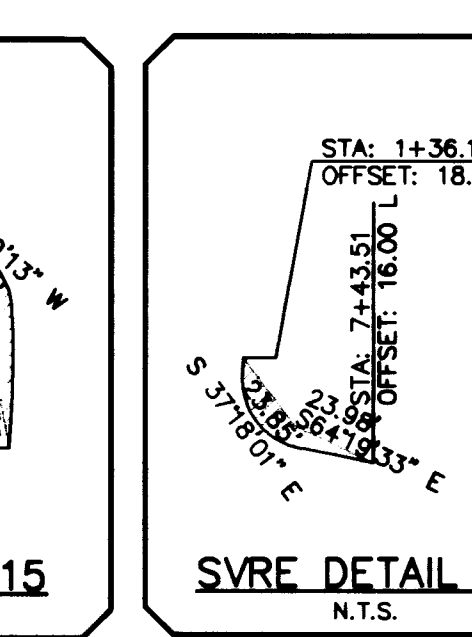
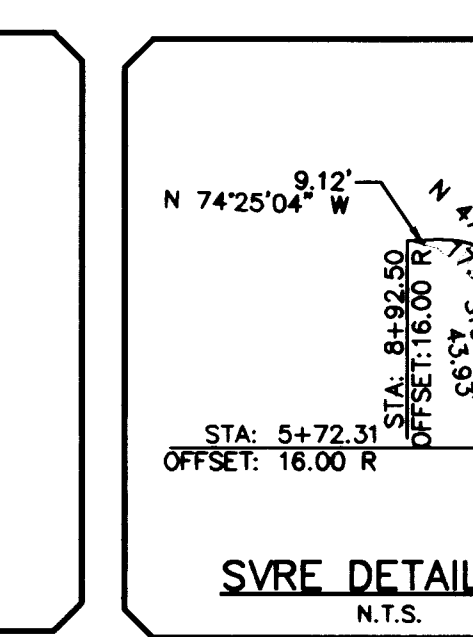
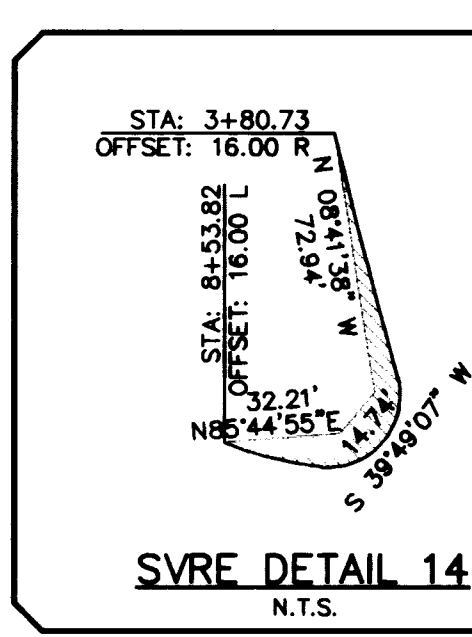
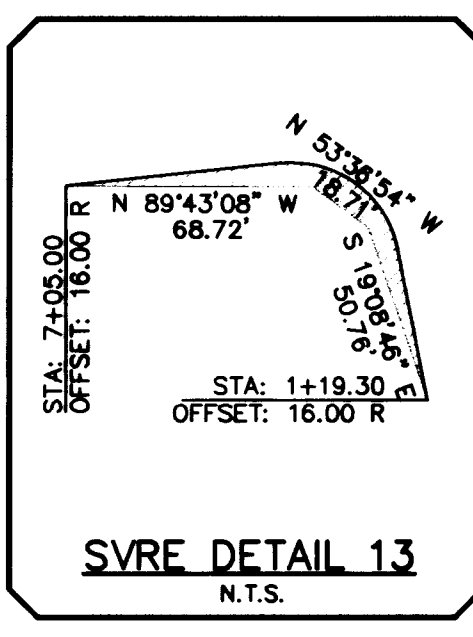
**APPROVED FOR CONSTRUCTION**

*[Signature]* 1/27/99  
LAS VEGAS VALLEY WATER DISTRICT DATE

### CITY OF LAS VEGAS STREETLIGHT NOTES

- ALL STREET LIGHTING INSTALLATIONS SHALL BE IN ACCORDANCE WITH THE STREET LIGHTING PLANS, THE "UNIFORM STANDARD SPECIFICATIONS FOR PUBLIC WORKS CONSTRUCTION OFF-SITE IMPROVEMENTS, CLARK COUNTY AREA, NEVADA", LATEST REVISION, AND THE "UNIFORM STANDARD DRAWINGS FOR PUBLIC WORKS CONSTRUCTION OFF-SITE IMPROVEMENTS, CLARK COUNTY AREA, NEVADA", LATEST REVISION.
- NO DEVIATION OF STREET LIGHT, PULL BOX, CONDUITS (ETC.) LOCATIONS SHALL BE PERMITTED WITHOUT WRITTEN APPROVAL OF THE TRAFFIC/ELECTRICAL FIELD OPERATIONS DIVISION AND THE CITY ENGINEER. ANY DEVIATION FROM THE PLAN LOCATION WILL REQUIRE COMPLIANCE WITH SECTION 623.L0.03 (E) OF THE SPECIFICATIONS.
- ALL EXISTING STREET LIGHTING SHALL REMAIN OPERATIONAL DURING CONSTRUCTION.
- ALL EMPTY CONDUIT SHALL HAVE PULL STRINGS INSTALLED PRIOR TO FINAL INSPECTION.
- ANY STRUCTURE SUCH AS BLOCK WALLS, CHAIN LINK FENCES, RETAINING WALLS, ETC., SHALL LEAVE A MINIMUM CLEARANCE OF EIGHTEEN INCHES (18") TO THE FACE OF STREET LIGHTING POLE ON ALL SIDES WHEN STREETLIGHT IS INSTALLED BEHIND SIDEWALK, AND SHALL AT NO TIME COMPLETELY ENCLOSE THE STREET LIGHTING POLE.
- AS-BUILT DRAWINGS SHALL BE SUPPLIED TO THE ELECTRICAL SERVICES SECTION PRIOR TO ANY PREFINAL INSPECTION. THE AS-BUILT DRAWING NEEDS TO BE STAMPED AS-BUILT AND SIGNED BY THE PREPARER.
- SERVICE POINT SHALL BE COORDINATED WITH NEVADA POWER COMPANY, AND WHEREVER POSSIBLE, BE LOCATED NEAR THE CENTER OF THE CIRCUIT. THIS SHALL BE THE CONTRACTORS RESPONSIBILITY.
- IT SHALL BE ASSUMED THAT IN THE ABSENCE OF AN EXISTING, WORKABLE CIRCUIT TO ATTACH TO, ALL INSTALLATIONS SHALL REQUIRE A NEW SERVICE FOR OPERATION OF THE CIRCUIT.
- WHEREVER THERE IS AN OVERHEAD UTILITY THAT MAY CONFLICT WITH THE INSTALLATION OF STREET LIGHTING CIRCUITS AND/OR POLES, THESE CONFLICTS MUST BE RESOLVED BETWEEN THE DEVELOPER AND THE UTILITIES INVOLVED BEFORE STREETLIGHT BASES ARE INSTALLED AT NO EXPENSE TO THE CITY OF LAS VEGAS.
- THE CONTRACTOR SHALL FURNISH COMPLETE SERVICE TO TRANSFORMERS AND CONTROL SYSTEMS IF REQUIRED ON PLANS.

3/98



REVISION	DATE	DESCRIPTION
1	4/10/98	RELOCATED STREET
2	2/27/99	RELOCATED STREETS & REVISIONS

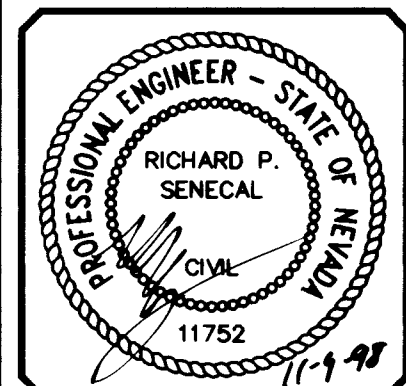
**NGRO ASSOCIATES**  
4545 SPRING MOUNTAIN ROAD, SUITE 105  
LAS VEGAS, NEVADA 89102  
(702) 247-1920

**PENTACORE**  
CIVIL ENGINEERING - LAND SURVEYING - PLANNING  
CONSULTING  
2875 WEST CHARLESTON BOULEVARD  
LAS VEGAS, NEVADA 89102 (702) 258-0115

UTILITY PLAN 2

DESERT BLOOM

DATE	7/13/98
DESIGNED BY	
CHECKED BY	
SCALE	1"=40'



SHEET **4** OF 21

C.L.V. DWG.# 3074-4588

