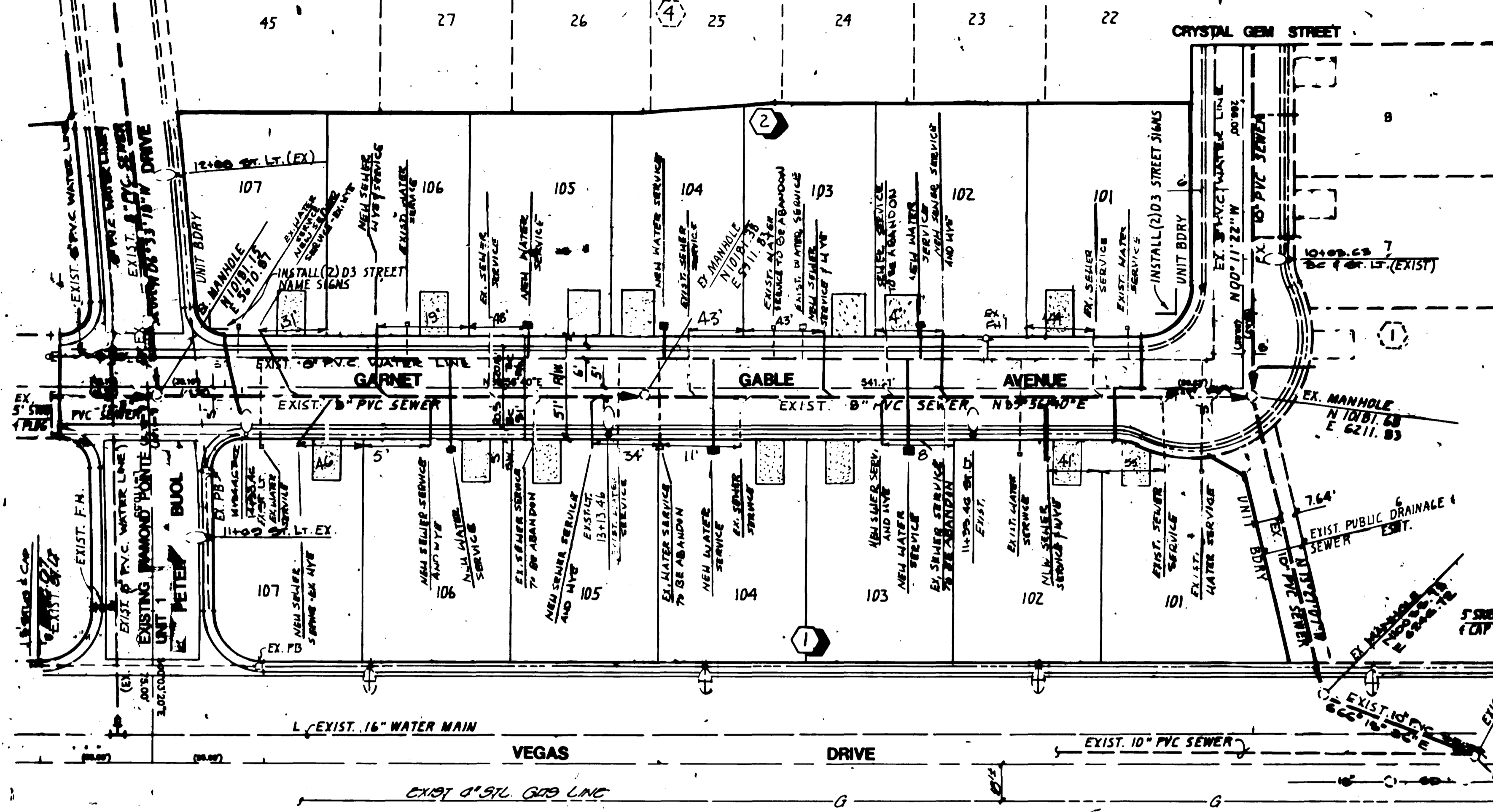


FUTURE UNIT 2



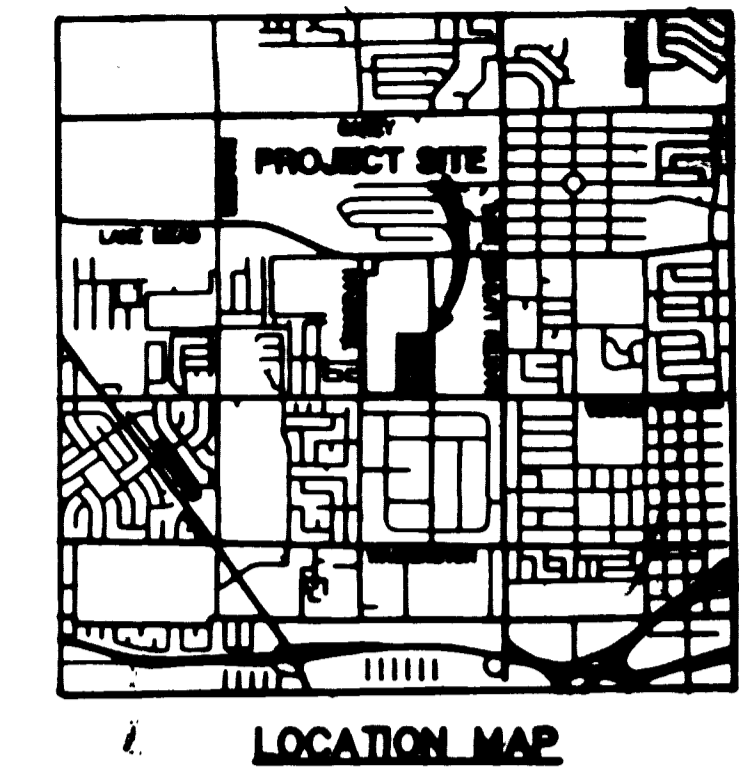
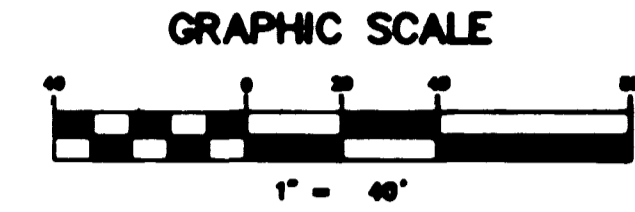
UNDEVELOPED

CITY OF LAS VEGAS SEWER NOTES

1. ALL CONSTRUCTION AND MATERIALS SHALL BE IN ACCORDANCE WITH THE LATEST EDITION OF THE DESIGN AND CONSTRUCTION STANDARDS FOR WASTEWATER COLLECTION SYSTEMS AND THE UNIFORM STANDARD SPECIFICATIONS FOR PUBLIC WORKS CONSTRUCTION OFF-SITE IMPROVEMENTS, CLARK COUNTY AREA, NEVADA, AS AMENDED. IN ALL CASES, THESE STANDARDS SHALL SUPERSEDE THE UNIFORM STANDARD SPECIFICATIONS. IT WILL BE THE RESPONSIBILITY OF THE CONTRACTOR TO BE AWARE OF THE CONTENTS OF THE ABOVE SPECIFICATION BOOKS.
2. IT SHALL BE THE CONTRACTOR'S RESPONSIBILITY TO PERFORM CONSTRUCTION AS PER PLANS. ANY ADDITIONS, DELETIONS, OR CHANGES SHALL FIRST MEET WITH THE APPROVAL OF THE CONTROLLING AGENCY.
3. CHASEL "S" OR "O" IN CURBS WHERE SEWER OR GAS LATERALS PASS UNDER THE CURB.
4. POLYETHYLENE (PE) SEWER PIPE SHALL MEET ASTM D-3034 FOR 36 SPECIFICATIONS, INSTALLED WITH SAND BEDDING AND BACKFILL OF TYPE II GRAVEL.
5. ALL MANHOLES IN PAVED STREETS 8' R/W AND LARGER SHALL HAVE CONCRETE COLLARS. COLLARS SHALL BE USED TO CONNECT SEWER LATERALS TO EXISTING MAIN LINES UP TO 12" DIA. SIZE. CONNECTIONS TO 15" OR LARGER MAINS SHALL REQUIRE SPECIAL PROCEDURES.
6. A SEWER MAIN CROSSING OVER A WATER MAIN OR LESS THAN 18" UNDER A WATER MAIN, MUST BE REINFORCED CONCRETE ENCASED FOR A DISTANCE NOT LESS THAN TEN FEET (10') TO EACH SIDE OF THE CENTERLINE OF THE WATER MAIN.
7. ALL CONTRACTORS INSTALLING SEWER MAINS THAT WILL BE UNDER THE JURISDICTION OF THE CONTROLLING AGENCY MUST BE CLASS "A" CONTRACTORS.
8. THE CITY OF LAS VEGAS WILL NOT ACCEPT ANY SEWER MAINS WHICH HAVE A VERTICAL DEFLECTION OF MORE THAN ONE TENTH (0.1) OF A FOOT FROM THE APPROVED CONSTRUCTION PLANS. SEWER MAINS FOUND TO EXCEED THIS TOLERANCE WILL HAVE TO BE REPAIRED OR REPLACED TO THE SATISFACTION OF THE CITY ENGINEER PRIOR TO ACCEPTANCE BY THE CITY.

WATER DISTRICT STANDARD NOTES

1. NO WORK SHALL BEGIN UNTIL THE WATER PLANS HAVE BEEN RELEASED FOR CONSTRUCTION BY THE LVVWD. FOLLOWING WATER PLAN APPROVAL, 48 HOUR NOTICE SHALL BE GIVEN TO THE LVVWD CUSTOMER SERVICE DEPARTMENT (225-4144) PRIOR TO THE START OF CONSTRUCTION. WORKS MUST BE GIVEN BY 8:00 P.M. THE BUSINESS DAY PRIOR TO A LVVWD SUPERVISION.
2. ALL WORK SHALL CONFORM TO LVVWD STANDARD PLANS, DRAWINGS, AND SPECIFICATIONS, LATEST EDITION.
3. ALL WORK, EXCEPT AS MODIFIED BY THESE PLANS OR BY NOTE 2, SHALL BE DONE IN ACCORDANCE WITH THE MOST CURRENT DRAFT OR EDITION OF THE UNIFORM STANDARD SPECIFICATIONS FOR PUBLIC WORKS CONSTRUCTION OFF-SITE IMPROVEMENTS, CLARK COUNTY AREA.
4. A SINGLE PIPE MATERIAL SHALL BE USED THROUGHOUT THE PROJECT UNLESS OTHERWISE APPROVED BY THE LVVWD.
5. ALL SERVICE LATERALS TWO (2) INCHES IN DIAMETER AND SMALLER SHALL BE COPPER TUBING WITH LVVWD APPROVED SERVICE SADDLES.
6. ALL WATER METER BOXES SHALL BE LOCATED OUTSIDE OF DRIVEWAY AREAS.
7. ALL VALVES SHALL BE LOCATED OUTSIDE OF DRIVEWAYS, VALLEY AND OUTLETS.
8. THE FOLLOWING REQUIREMENTS MUST BE MET IN THE EVENT A WATER LINE AND A SANITARY OR STORM SEWER LINE CROSS:
  - A. MINIMUM EXPOSED (18) INCH VERTICAL SEPARATION (OUTSIDE TO OUTSIDE) MUST BE MAINTAINED WHEN THE WATER LINE IS INSTALLED OVER THE SANITARY OR STORM SEWER LINE. THE VERTICAL SEPARATION CANNOT BE MAINTAINED OR THE WATER LINE MUST BE PLACED UNDER THE SANITARY OR STORM SEWER LINE. THE SANITARY OR STORM SEWER LINE MUST BE CONSTRUCTED WITH ONE OF THE FOLLOWING OR, AS SHOWN ON THESE PLANS:
    - i. POTABLE WATER SUPPLY QUALITY MATERIAL.
    - ii. ENCASEMENT WITH FOUR (4) INCH CONCRETE (MINIMUM)
    - iii. SLEEVING WITH POTABLE WATER SUPPLY QUALITY PIPE.
9. WARNING TAPE SHALL BE REQUIRED OVER ALL MAINS, ALL SIX (6) INCH DIAMETER AND LARGER SERVICE LATERALS, AND ANY SERVICE LATERAL NOT INSTALLED PERPENDICULAR TO THE MAIN IN ACCORDANCE WITH STANDARD PLATE NO. 27.
10. ALL WATER FACILITIES SHALL BE FILLED, DISINFECTED, PRESSURE TESTED, FLUSHED, FILLED AND AN ACCEPTABLE WATER SAMPLE OBTAINED PRIOR TO CONNECTION TO THE LVVWD'S DISTRIBUTION SYSTEM.
11. THE CONTRACTOR MUST OBTAIN ALL METERS TWO (2) INCHES AND SMALLER FROM LVVWD CENTRAL STORES. TELEPHONE 225-316 FORTY-EIGHT (48) HOURS PRIOR TO PROJECT.
12. CONSTRUCTION MAY INTERRUPT SERVICE, WITH LVVWD APPROVAL AND PROPER NOTIFICATION, BETWEEN THE HOURS OF 10 P.M. AND 6 A.M. SUNDAY THROUGH THURSDAY. CIRCUMSTANCES MAY REQUIRE TEMPORARY SERVICE FEEDS BE INSTALLED, WITHOUT LVVWD REIMBURSEMENT. ANY TEMPORARY SERVICE FEED MUST HAVE PRIOR LVVWD APPROVAL.
13. ALL WATER FACILITY CONSTRUCTION MATERIALS USED MUST BE AS LISTED ON THE LVVWD'S APPROVED MATERIALS AND MANUFACTURERS LISTED FOR NEW FACILITIES, LATEST REVISION, OR SPECIFICALLY APPROVED ON THESE PLANS.



ESTIMATE OF QUANTITIES

SEWER	
4" PVC SEWER LATERALS	265 LF
WYES	7 EA

WATER	
5/8" METER	14 EA
2-EXIST. WATER SERVICE TO BE ABANDON	
LOT 104, BLK 1 AND LOT 103, BLK 2	
INSTALL SIX NEW 1" SERVICE LATERALS	

- STREET NAME SIGNS ----- 1 EA
- DRIVEWAY LOCATION (SCHEMATIC ONLY)
- POINT OF CONNECTION

NOTE:  
ABANDON SEWER LATERALS SHALL USE ONE OF THE FOLLOWING THREE METHODS:  
A. CRUSH LINE IN PLACE  
B. EXCAVATE AND REMOVE LINE  
C. PRESSURE GROUTING OF LINE WITH APPROVED GROUT AND SAND.

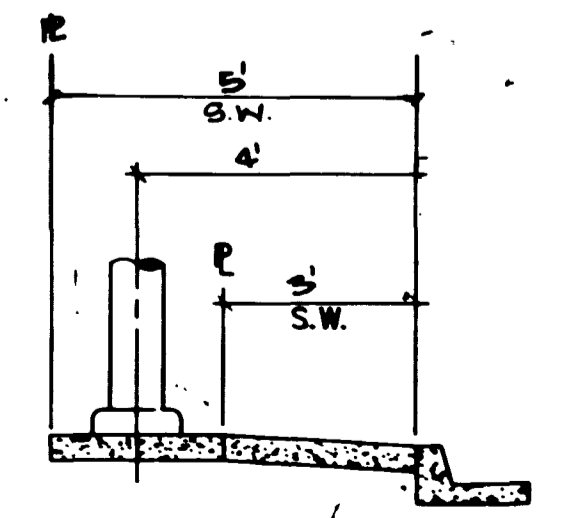
ABANDONMENT OF EXISTING SERVICES: 2" AND SMALLER  
The Contractor shall notify the Inspection Division at the LVVWD (225-3227) 48 hours prior to the requested removal time to allow District to take the final meter reading of the meter. After the final reading, the Contractor may then begin removal procedures for the affected service as follows:  
Existing service laterals that are to be abandoned from the existing water main, shall have the corporation stop turned off at the main, the lateral cut 6" downstream from the corporation stop and out again 6" downstream from the first cut such that a 6" piece of the existing service lateral is removed. If the corporation stop is damaged beyond repair or pulled from the existing water main, the main shall be repaired at the Contractor's expense, in a manner approved by the LVVWD. If the corporation stop is not water tight, the Contractor shall notify LVVWD Communication Support Center (702-258-7171) for further direction.  
The Contractor shall remove the existing service meter base and appurtenances. Fill and grade any and all resulting voids and replace or restore to original condition or better, all landscaping, irrigation systems, concrete, sidewalks, asphalt, or any other items damaged or removed during the removal of the existing service meter base.

SEWER LATERAL "AS-BUILT" CERTIFICATION

STEPHEN P. GURLIDES, P.L.S.  
NEVADA CERT. NO.: 9105  
5-13-97

WATER CROSSING NOTE

THE FOLLOWING ARE THE REQUIREMENTS THAT MUST BE MET WHEN THERE IS A WATER-SEWER CROSSING:  
WHEN PROTECTION OF THE WATERLINE IS CONSIDERED, THE MINIMUM VERTICAL DISTANCE OF 18 INCHES MUST BE MAINTAINED WHEN THE WATER LINE IS INSTALLED OVER THE SEWER/STORM LINE. IF THIS DISTANCE CANNOT BE MAINTAINED BECAUSE OF PHYSICAL OBSTRUCTIONS OR THE WATERLINE MUST BE PLACED UNDER THE SEWER/STORM LINE, THE SEWER/STORM LINE MUST BE CONSTRUCTED WITH ANY ONE OF THE FOLLOWING:  
A. EXTRA HEAVY CAST IRON OR DUCTILE IRON PIPE  
B. WATER SUPPLY QUALITY MATERIAL  
C. ENCASEMENT WITH 4 INCHES MINIMUM OF CONCRETE OR SLEEVING WITH WATER QUALITY PIPE  
EACH OF THESE PROVISIONS MUST BE EXTENDED FOR 10 FEET ON EITHER SIDE OF THE WATERLINE AT 90 DEGREES TO THE CROSSING.



STREET LIGHT DETAIL

STREET LIGHT NOTE

ALL STREET LIGHTING INSTALLATION EXCEPT AS NOTED ON THE STREET LIGHTING PLANS SHALL CONFORM TO THE IMPROVEMENT STANDARDS, DEPARTMENT OF PUBLIC WORKS, CITY OF LAS VEGAS, NEVADA, AND THE UNIFORM STANDARD SPECIFICATIONS FOR PUBLIC WORKS CONSTRUCTION, OFF-SITE IMPROVEMENTS, CLARK COUNTY AREA, NEVADA.  
ALL POLES TO BE GALVANIZED.

PROJECTNAME: Diamond Pointe 1A  
4-4-96  
This project water plan complies with the Las Vegas Valley Water District's technical requirements. However, this water plan is NOT APPROVED FOR CONSTRUCTION at this time and this signature does not provide or imply consent.  
LVVWD DATE: 4/11/96

APPROVAL:  
LAS VEGAS VALLEY WATER DISTRICT DATE: 4/17/96  
CITY OF LAS VEGAS FIRE MARSHAL DATE: 3-28-96

NEVADA POWER COMPANY DATE: 3/28/96  
NEVADA POWER COMPANY APPROVAL IS ONLY FOR THE CLEARANCE AND CLEARANCE OF STREET LIGHT AND SIGNAL LIGHT INSTALLATION.

BENCHMARK  
BM # 9-388 USGS05  
USGS BRASS CAP, 9-388, NORTHEAST CORNER OF BONANZA RD. AND TOPPAH DR. 25 FT. NORTH OF NORTH CURB ON BONANZA RD. AND 2 FT. WEST OF A 4 FT. BLOCK WALL, EAST SIDE OF TOPPAH DR.  
ELEV. 2070.72

Call before you Dig  
1-800-827-8802

LONGFORD HOMER, INC.  
CITY OF LAS VEGAS  
CONSULTING ENGINEERS • PLANNERS • LAND SURVEYORS  
2727 SOUTH RAINBOW BOULEVARD  
LAS VEGAS, NEVADA 89102-9149, PHONE (702) 873-7500 FAX (702) 382-2887

SEWER AS-BUILT  
DIAMOND POINTE UNIT 1  
NO. 4726-1  
BY: KFN  
DATE: FEB. 1996  
SCALE: T=40'  
SHEET: 10 of 16  
"As Built" 367Y-437B-1

