

EAGLE TRACE SEWER AS-BUILT MAP

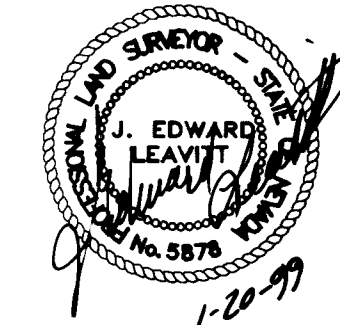
SURVEYOR'S CERTIFICATE

I, J EDWARD LEAVITT, A PROFESSIONAL LAND SURVEYOR IN THE STATE OF NEVADA, ACTING AS AGENT FOR ALPHA ENGINEERING CO., DO HEREBY CERTIFY THAT THE DIMENSIONS AND ELEVATIONS SHOWN ON THIS AS-BUILT PLAN ACCURATELY REFLECT THE CONDITIONS WHICH EXIST AT EAGLE TRACE (AS RECORDED IN BOOK 67, PAGE 50 OF PLATS IN THE OFFICE OF THE COUNTY RECORDER, CLARK COUNTY, NEVADA).

SERVICE LOCATIONS ARE REFLECTIVE OF "S" SCRIBED IN THE CURB. THIS SURVEY WAS COMPLETED ON JAN 8, 1999



J EDWARD LEAVITT, PLS 5878



JEL 1/22/99



MATERIALS:
8" PVC SEWER MAIN - DIAMOND STR-35+
NOTE - MATERIAL TYPES PROVIDED BY DEVELOPER AND COULD NOT BE VERIFIED

APPROVED	
DATE	
REVISION	

ALPHA & ENGINEERING COMPANY
95 So. Jones Blvd., Las Vegas, NV, 89107
Telephone: (702) 871-1200

SEWER AS-BUILT MAP
EAGLE TRACE

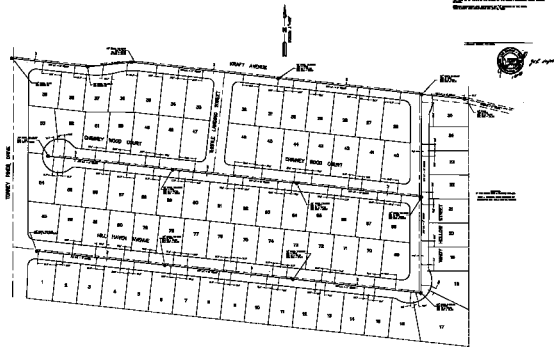
JOB #	N4-01-01
NAME	SMD
DATE	01-20-99
SCALE	1" = 50'

PAGE	1
------	---

EAGLE TRACE SEWER AS-BUILT MAP

SURVEYOR'S DECLARATION

LET ME INFORM YOU THAT THIS
IS A TRUE AND CORRECT COPY OF THE ORIGINAL
RECORDED MAP.



ALPHA
&
ENGINEERING
INCORPORATED
1000 W. 10th St.
Brea, CA 92621

SEWER AS-BUILT MAP
EAGLE TRACE

DATE	10/10/00
BY	...
CHECKED	...
APPROVED	...

1