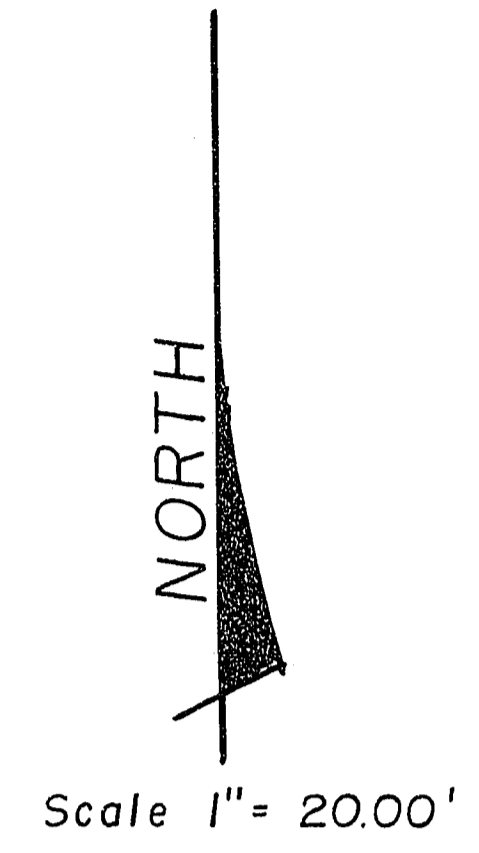


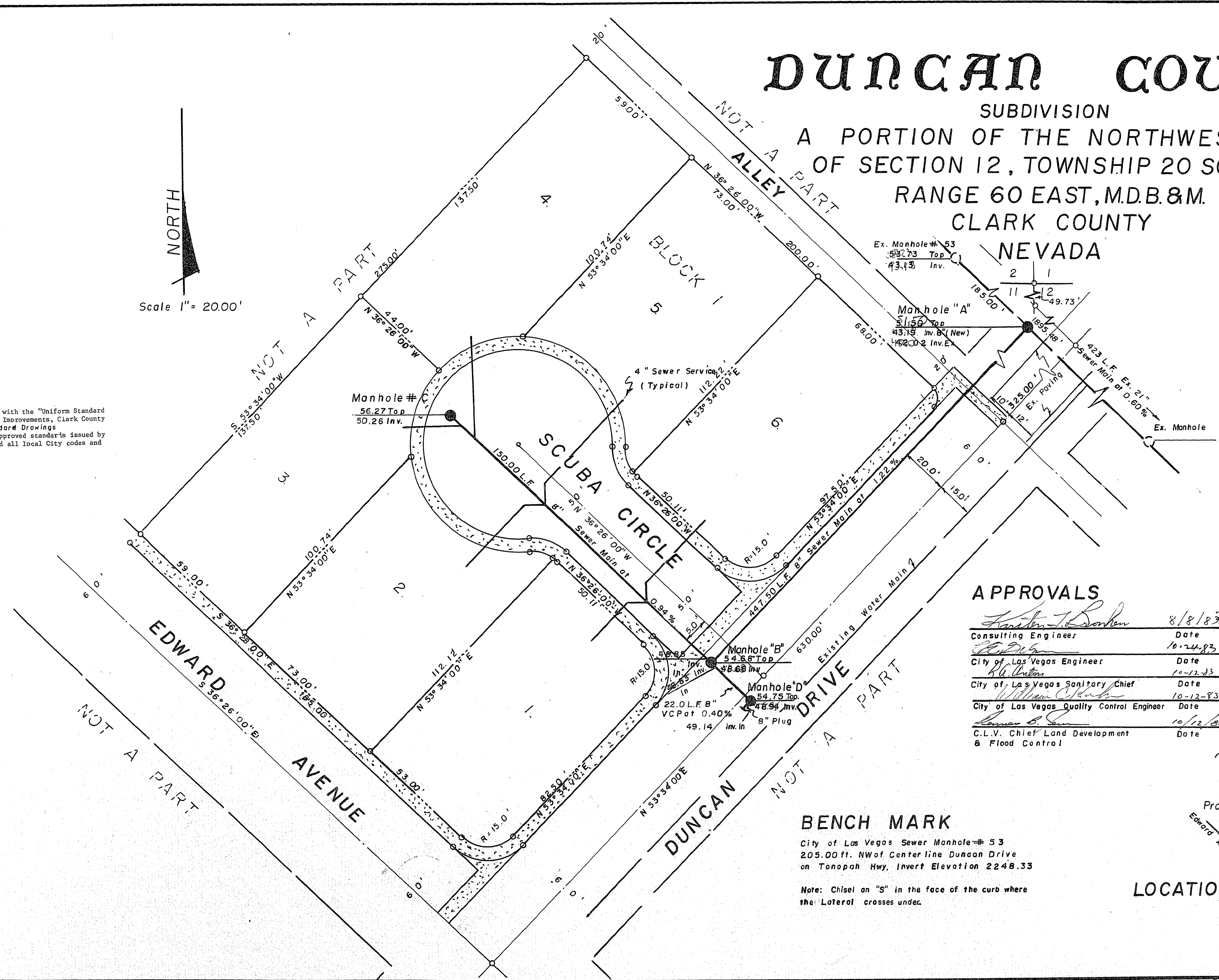
# DUNCAN COURT

SUBDIVISION  
 A PORTION OF THE NORTHWEST 1/4  
 OF SECTION 12, TOWNSHIP 20 SOUTH,  
 RANGE 60 EAST, M.D.B. & M.  
 CLARK COUNTY  
 NEVADA



**NOTE:**

All construction and materials shall be in accordance with the "Uniform Standard Specifications for Public Works Construction Off-site Improvements, Clark County Area Nevada" issued 1978, the City of Las Vegas, Standard Drawings, any other applicable approved standards issued by the controlling agency, the Uniform Building Code, and all local City codes and ordinances applicable.



**MATERIALS LIST**

- 1 each 5.00 ft. Dia. Manhole
- 3 each 4.00 ft. Dia. Manholes
- 620.00 L.F. 8" Sewer Main
- 6 each 4" Sewer Service
- 1 each 8" Plug

**APPROVALS**

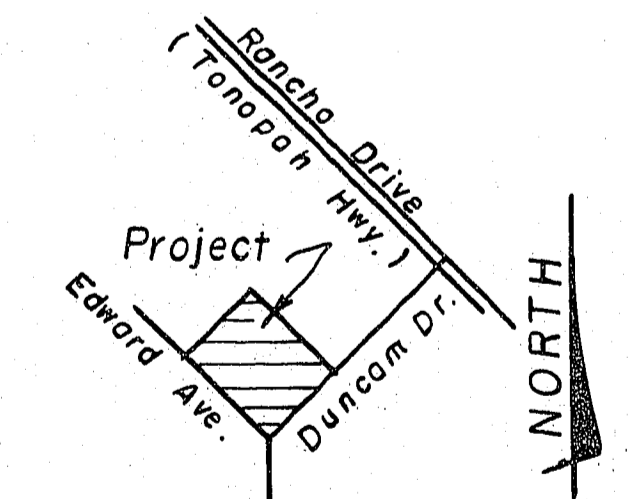
<i>Karsten T. Bronken</i>	8/8/83
Consulting Engineer	Date
<i>[Signature]</i>	10-24-83
City of Las Vegas Engineer	Date
<i>[Signature]</i>	10-12-83
City of Las Vegas Sanitary Chief	Date
<i>[Signature]</i>	10-12-83
City of Las Vegas Quality Control Engineer	Date
<i>[Signature]</i>	10/12/83
C.L.V. Chief Land Development & Flood Control	Date



**BENCH MARK**

City of Las Vegas Sewer Manhole # 53  
 205.00 ft. NW of Center line Duncan Drive  
 on Tonopah Hwy. Invert Elevation 2248.33  
 Note: Chisel an "S" in the face of the curb where the Lateral crosses under.

**LOCATION MAP**



REVISIONS:	Scale 1" = 20.00' Date 6/20/83	TITLE <b>SEWER PLAN</b>	<p><i>Karsten T. Bronken</i>                  Consulting Engineers                  1818 INDUSTRIAL ROAD, LAS VEGAS, NEVADA 89102</p>	SHEET NUMBER 4 OF 6
------------	-----------------------------------	----------------------------	---	------------------------