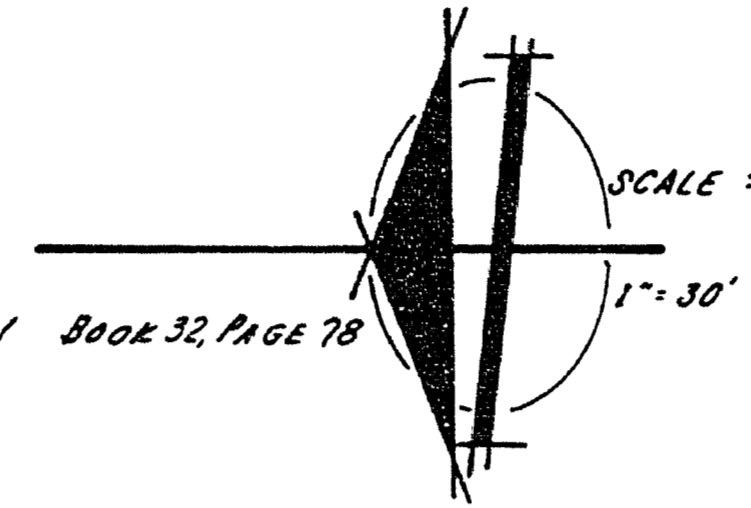


DESERT PARK HOMES UNIT N^o 2

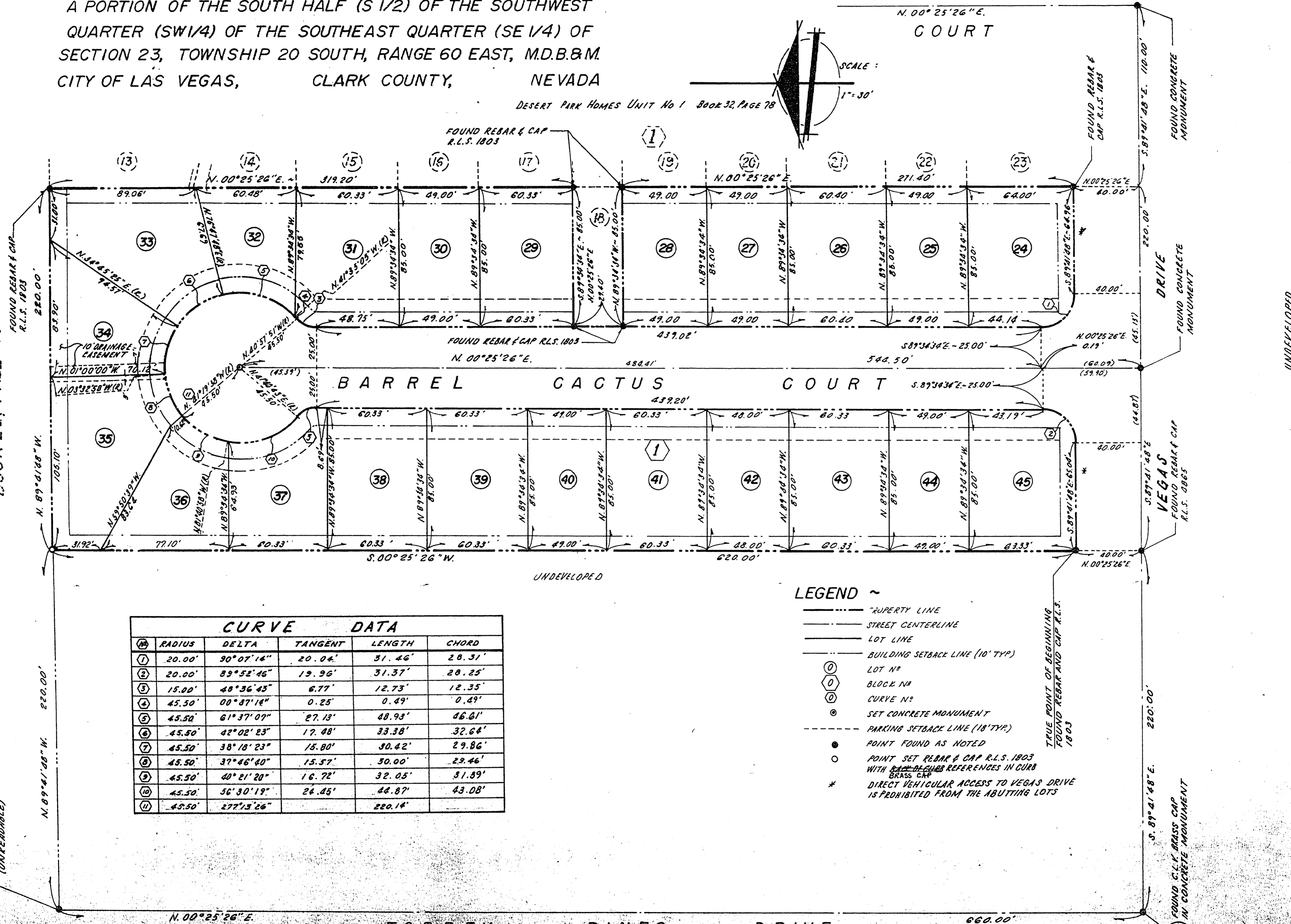
A PORTION OF THE SOUTH HALF (S 1/2) OF THE SOUTHWEST QUARTER (SW 1/4) OF THE SOUTHEAST QUARTER (SE 1/4) OF SECTION 23, TOWNSHIP 20 SOUTH, RANGE 60 EAST, M.D.B.&M. CITY OF LAS VEGAS, CLARK COUNTY, NEVADA

DESERT PARK HOMES UNIT No 1 Book 32, Page 78

JOSHUA TREE COURT
N. 00° 25' 26" E.



EXISTING KINGSWOOD ESTATES UNIT N^o 5
BOOK 22, PAGE 40



CURVE DATA					
Curve No.	RADIUS	DELTA	TANGENT	LENGTH	CHORD
1	20.00'	30° 07' 14"	20.04'	31.46'	28.31'
2	20.00'	89° 52' 46"	19.96'	31.37'	28.25'
3	15.00'	48° 36' 45"	6.77'	12.73'	12.35'
4	45.50'	00° 37' 14"	0.25'	0.49'	0.49'
5	45.50'	61° 37' 07"	27.18'	48.93'	46.61'
6	45.50'	42° 02' 23"	17.48'	33.38'	32.64'
7	45.50'	38° 18' 23"	15.80'	30.42'	29.86'
8	45.50'	37° 46' 40"	15.57'	30.00'	29.46'
9	45.50'	40° 21' 20"	16.72'	32.05'	31.39'
10	45.50'	56° 30' 19"	24.45'	44.87'	43.08'
11	45.50'	277° 13' 26"		220.14'	

- LEGEND**
- PROPERTY LINE
 - STREET CENTERLINE
 - LOT LINE
 - BUILDING SETBACK LINE (10' TYP)
 - LOT N^o
 - BLOCK N^o
 - CURVE N^o
 - SET CONCRETE MONUMENT
 - PARKING SETBACK LINE (18' TYP)
 - POINT FOUND AS NOTED
 - POINT SET REBAR & CAP R.L.S. 1803 WITH BACK-SIGHTS REFERENCES IN CURS BRASS CAP
 - * DIRECT VEHICULAR ACCESS TO VEGAS DRIVE IS PROHIBITED FROM THE ADJUTING LOTS