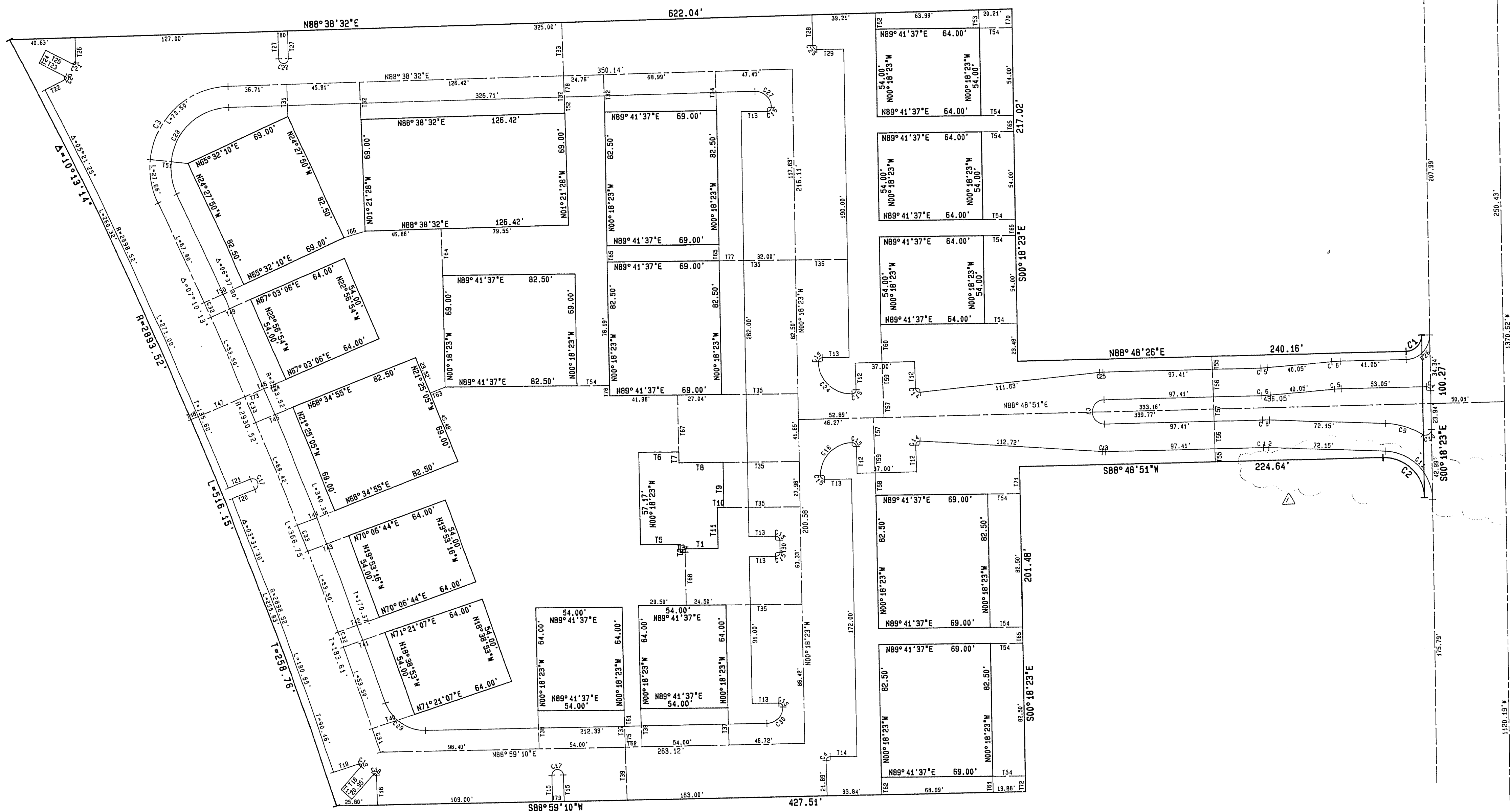


SCALE 1"=40'



NUMBERED COURSES

REF. NO.	BEARING	DISTANCE
T 1	N89°41'37\"E	20.33
T 2	N00°18'23\"W	2.17
T 3	N89°41'37\"E	3.00
T 4	N00°18'23\"W	3.00
T 5	N89°41'37\"E	24.50
T 6	N89°41'37\"E	24.96
T 7	N00°18'23\"W	2.71
T 8	N89°41'37\"E	27.96
T 9	N00°18'23\"W	4.17
T 10	N89°41'37\"E	23.33
T 11	N00°18'23\"W	16.50
T 12	N01°11'09\"W	16.50
T 13	N89°41'37\"E	16.50
T 14	N89°41'37\"E	16.47
T 15	N01°00'50\"W	16.50
T 16	N01°00'50\"W	18.78
T 17	N48°15'55\"E	9.00
T 18	N41°40'05\"E	19.36
T 19	N72°14'05\"E	17.13
T 20	N89°41'37\"E	15.00
T 21	N68°31'19\"E	15.50
T 22	N63°09'54\"E	14.19
T 23	N62°24'19\"E	16.4
T 24	N27°35'41\"E	6.00
T 25	N62°24'19\"E	19.27
T 26	N01°24'28\"W	17.00
T 27	N01°24'28\"W	18.88
T 28	N89°41'37\"E	16.50
T 29	N00°18'23\"W	7.48
T 30	N01°24'28\"W	19.78
T 31	N01°24'28\"W	23.00
T 32	N01°24'28\"W	13.00
T 33	N01°24'28\"W	24.27
T 34	N89°41'37\"E	47.00
T 35	N89°41'37\"E	32.00
T 36	N01°00'50\"W	23.00
T 37	N01°00'50\"W	23.67
T 38	N01°00'50\"W	2.00
T 39	N71°52'30\"E	27.48
T 40	N70°49'44\"E	27.48
T 41	N68°35'01\"E	27.48
T 42	N68°35'01\"E	27.48
T 43	N69°15'03\"E	24.98
T 44	N67°05'44\"E	24.98
T 45	N67°05'44\"E	32.00
T 46	N67°34'29\"E	32.00
T 47	N67°34'29\"E	3.00
T 48	N68°31'44\"E	27.48
T 49	N66°20'06\"E	23.50
T 50	N89°41'37\"E	10.00
T 51	N89°41'37\"E	11.17
T 52	N89°41'37\"E	20.00
T 53	N89°41'37\"E	8.00
T 54	N01°11'09\"W	17.00
T 55	N01°11'09\"W	15.00
T 56	N01°11'09\"W	15.00
T 57	N01°11'09\"W	15.00
T 58	N01°11'09\"W	23.27
T 59	N01°00'50\"W	10.00
T 60	N01°00'50\"W	10.00
T 61	N01°00'50\"W	10.00
T 62	N68°34'55\"E	10.00
T 63	N01°24'28\"W	28.79
T 64	N01°18'23\"W	13.93
T 65	N73°23'39\"E	13.93
T 66	N00°18'23\"W	41.85
T 67	N00°18'23\"W	35.00
T 68	N89°41'37\"E	10.01
T 69	N00°18'23\"W	16.17
T 70	N00°18'23\"W	11.54
T 71	N00°18'23\"W	9.75
T 72	N00°18'23\"W	13.00
T 73	N67°34'29\"E	14.46
T 74	N67°34'29\"E	13.00
T 75	N01°00'50\"W	6.31
T 76	N00°18'23\"W	6.31
T 77	N89°41'37\"E	15.00
T 78	N89°41'37\"E	13.00
T 79	N89°41'37\"E	7.00
T 80	N89°38'32\"E	6.00

CURVE DATA

CURVE NO.	DELTA	RADIUS	LENGTH	TANGENT
1	89°41'00\"	40.00	15.57	9.87
2	90°52'46\"	25.00	35.65	25.39
3	113°37'58\"	50.00	100.15	77.22
4	90°52'46\"	2.50	3.97	2.54
5	91°08'00\"	60.00	4.03	2.02
6	91°08'00\"	77.00	3.58	2.58
7	187°18'00\"	7.00	2.02	1.11
8	90°08'00\"	77.00	3.58	2.58
9	29°23'20\"	47.00	24.11	12.33
10	129°39'06\"	3.50	3.74	2.27
11	87°58'14\"	45.94	26.84	16.84
12	90°08'00\"	60.00	3.29	1.65
13	9°47'15\"	24.50	1.05	0.50
14	149°00'00\"	2.00	1.44	0.70
15	90°00'00\"	20.50	3.93	2.50
16	149°26'00\"	1.00	1.11	0.70
17	125°54'13\"	1.00	1.19	0.79
18	137°19'05\"	1.00	2.40	1.56
19	149°26'00\"	1.00	1.61	1.03
20	118°57'09\"	1.00	1.19	0.79
21	180°00'00\"	3.00	0.00	0.00
22	89°41'37\"E	2.50	3.98	2.45
23	89°41'37\"E	20.00	31.72	20.31
24	89°41'37\"E	24.50	20.07	1.03
25	89°41'37\"E	10.00	2.36	1.40
26	89°41'37\"E	10.00	18.89	10.19
27	113°37'58\"	37.50	74.37	57.34
28	72°38'59\"	25.00	37.47	24.80
29	89°17'33\"	10.00	19.58	12.88
30	0°18'17\"	29	15.58	7.80
31	0°11'31\"	2930.55	1.91	0.99
32	0°20'18\"	2930.55	1.91	0.99

- NOTES
- ALL DRIVEWAY AND PARKING AREA DIMENSIONS ARE TO BACK OF CURB. (UNLESS OTHERWISE NOTED)
 - WHERE PARKING SPACES ABUTT PROPERTY LINE, BACK OF CURB AND PROPERTY LINE ARE THE SAME. (UNLESS OTHERWISE NOTED)
 - BUILDING LOCATION RECTANGLES SHOWN HEREON ARE PLOTTED TO THE EXTERIOR OF MAJOR BUILDING DIMENSIONS, INCLUSIVE OF ANY EXTERIOR STAIRWAYS.

REVISIONS

NO.	DESCRIPTION/DATE	BY
1	As shown on plan	W.A. Anderson
2	Revised 12-28-88	W.A. Anderson
3	12-12-88	W.A. Anderson

W.A. Anderson
5-16-88

SPARKS, NEVADA
LAS VEGAS, NEVADA
PHOENIX, ARIZONA

incorporated

ENGINEERS/PLANNERS

NEVADA

HORIZONTAL CONTROL PLAN
EMERALD COVE

A PORTION OF THE NE1/4 OF SECTION 32, T20S-R82E M.D.M. CLARK COUNTY NEVADA

CITY OF LAS VEGAS

JOB NO. 2-270-033-881
DESIGNED CWA
DRAWN JB
COMP.
CHECKED
DATE MARCH 1988

139-127 1074-4004