

HORIZONTAL CURVE DATA TABLE

TOWN HOMES

CURVE	ARC	DELTA	RADIUS	TAN LENGTH
C1	39 27	90°00'00"	25 00	5 00
C2	12 03	11°29'22"	80 00	6 04
C3	18 25	0°58'16"	1136 33	9 63
C4	7 86	90°15'27"	5 00	5 02
C5	19 00	0°58'27"	1117 33	9 50
C6	7 88	90°15'12"	5 00	5 02
C7	5 91	0°17'52"	1136 33	2 95
C8	7 85	90°00'00"	5 00	5 00
C9	7 85	90°00'00"	5 00	5 00
C10	23 56	90°00'00"	15 00	15 00
C11	7 85	90°00'00"	5 00	5 00
C12	7 85	90°00'00"	5 00	5 00
C13	7 85	90°00'00"	5 00	5 00
C14	7 85	90°00'00"	5 00	5 00
C15	7 85	90°00'00"	5 00	5 00
C16	7 85	90°00'00"	5 00	5 00
C17	7 80	89°25'58"	5 00	4 95
C18	19 72	2°10'38"	519 00	9 86
C19	7 80	89°25'58"	5 00	4 95
C20	8 21	94°05'46"	5 00	5 37
C21	18 52	18°56'59"	56 00	9 36
C22	7 82	87°16'14"	5 00	4 77
C23	16 85	180°00'00"	6 00	6 00
C24	16 85	180°00'00"	6 00	6 00
C25	4 28	21°16'24"	25 00	4 70
C26	7 44	85°13'11"	5 00	4 80
C27	7 44	85°13'11"	5 00	4 80
C28	6 20	14°12'36"	25 00	3 12
C29	7 16	82°00'38"	5 00	4 35
C30	19 08	35°15'20"	31 00	9 85
C31	7 85	90°00'00"	5 00	5 00
C32	18 90	14°26'21"	75 00	9 50
C33	8 21	94°05'46"	5 00	5 37
C34	18 52	18°56'59"	56 00	9 36
C35	7 85	90°00'00"	5 00	5 00
C36	15 31	35°05'26"	25 00	7 90
C37	7 85	90°00'00"	5 00	5 00
C38	7 85	90°00'00"	5 00	5 00
C39	18 42	2°55'25"	361 00	9 21
C40	20 49	78°16'28"	15 00	12 21
C41	7 35	84°15'39"	5 00	4 52
C42	7 35	84°15'39"	5 00	4 52
C43	8 03	91°58'34"	5 00	5 18
C44	19 00	8°18'43"	131 00	9 52
C45	8 03	91°58'34"	5 00	5 18
C46	8 04	18°25'08"	25 00	4 05
C47	9 02	103°22'10"	5 00	6 33
C48	7 85	90°00'00"	5 00	5 00
C49	23 56	90°00'00"	15 00	15 00
C50	8 25	94°33'07"	5 00	5 44
C51	9 51	11°07'33"	49 00	4 77
C52	7 63	87°26'29"	5 00	4 78
C53	25 49	97°21'22"	15 00	17 06
C54	18 86	43°14'00"	25 00	9 91
C55	23 50	89°44'49"	15 00	14 93
C56	23 56	90°00'00"	15 00	15 00
C57	7 85	90°00'00"	5 00	5 00
C58	7 85	90°00'00"	5 00	5 00
C59	7 69	88°09'05"	5 00	4 84
C60	10 71	3°37'46"	169 00	5 35
C61	9 51	8°35'36"	81 00	4 76
C62	9 19	93°49'21"	5 00	5 36
C63	22 73	52°06'00"	25 00	12 22
C64	7 85	90°00'00"	5 00	5 00
C65	7 85	90°00'00"	5 00	5 00
C66	23 55	89°57'06"	15 00	14 99
C67	7 85	90°00'00"	5 00	5 00
C68	8 59	98°26'58"	5 00	5 80
C69	7 31	83°47'48"	5 00	4 48
C70	7 85	90°00'00"	5 00	5 00
C71	21 13	67°15'12"	18 00	11 97
C72	78 07	49°09'25"	91 00	41 62
C73	38 03	21°47'12"	100 00	19 25
C74	34 72	30°08'19"	86 00	17 77
C75	59 54	37°29'05"	91 00	30 88
C76	68 14	46°28'32"	84 00	36 07
C77	55 30	2°44'59"	1152 33	27 66
C78	62 35	87°08'15"	41 00	39 00
C79	89 15	37°16'59"	137 00	46 22
C80	60 52	37°16'59"	93 00	31 37
C81	9 42	90°00'00"	6 00	6 00
C82	9 42	90°00'00"	6 00	6 00
C83	9 42	90°00'00"	6 00	6 00
C84	9 42	90°00'00"	6 00	6 00
C85	9 42	90°00'00"	6 00	6 00
C86	9 42	90°00'00"	6 00	6 00
C87	9 42	90°00'00"	6 00	6 00
C88	9 42	90°00'00"	6 00	6 00
C89	7 85	90°00'00"	5 00	5 00
C90	7 85	90°00'00"	5 00	5 00
C91	18 59	10°39'12"	100 00	9 32
C92	18 49	10°35'31"	100 00	9 27
C93	7 54	86°22'17"	5 00	4 69
C94	8 12	93°01'01"	5 00	5 27
C95	15 07	7°30'35"	115 00	7 55
C96	5 10	19°28'16"	15 00	2 57
C97	18 46	70°31'44"	15 00	18 61
C98	18 46	70°31'44"	15 00	18 61
C99	9 42	90°00'00"	6 00	6 00
C100	5 10	19°28'16"	15 00	2 57
C101	11 29	6°28'00"	100 00	5 65
C102	15 28	5°50'12"	150 00	7 65
C103	3 59	3°36'31"	57 00	1 80

PATIO HOMES

CURVE	ARC	DELTA	RADIUS	TAN LENGTH
C1	18 40	9°10'02"	115 00	9 22
C2	26 84	11°23'33"	135 00	13 47
L3	8 21	94°05'46"	5 00	5 37
L4	18 52	18°56'59"	56 00	9 36
C5	7 85	90°00'00"	5 00	5 00
C6	7 85	90°00'00"	5 00	5 00
C7	7 85	90°00'00"	5 00	5 00
C8	7 85	90°00'00"	5 00	5 00
C9	7 85	90°00'00"	5 00	5 00
C10	14 19	32°31'07"	25 00	7 28
C11	16 09	2°53'12"	361 00	6 05
C12	21 52	49°19'16"	25 00	11 48
C13	23 56	90°00'00"	15 00	15 00
C14	23 56	90°00'00"	15 00	15 00
C15	23 56	90°00'00"	15 00	15 00
C16	15 31	35°05'26"	25 00	7 90
C17	7 85	90°00'00"	5 00	5 00
C18	7 85	90°00'00"	5 00	5 00
C19	23 56	90°00'00"	15 00	15 00
C20	18 42	2°55'25"	361 00	9 21
C21	20 49	78°16'28"	15 00	12 21
C22	7 85	90°00'00"	5 00	5 00
C23	8 59	98°26'58"	5 00	5 80
C24	7 31	83°47'48"	5 00	4 48
C25	7 85	90°00'00"	5 00	5 00
C26	21 13	67°15'12"	18 00	11 97
C27	68 14	46°28'32"	84 00	36 07
C28	19 86	32°51'07"	35 00	10 21
C29	62 35	67°08'15"	41 00	39 00
C30	33 08	49°52'49"	38 00	17 67
C31	9 42	90°00'00"	6 00	6 00
C32	9 42	90°00'00"	6 00	6 00
C33	9 42	90°00'00"	6 00	6 00
C34	9 42	90°00'00"	6 00	6 00
C35	9 42	90°00'00"	6 00	6 00
C36	9 42	90°00'00"	6 00	6 00
C37	9 42	90°00'00"	6 00	6 00
C38	9 42	90°00'00"	6 00	6 00
C39	7 85	90°00'00"	5 00	5 00
C40	7 85	90°00'00"	5 00	5 00
C41	18 59	10°39'12"	100 00	9 32
C42	18 49	10°35'31"	100 00	9 27
C43	7 54	86°22'17"	5 00	4 69
C44	8 12	93°01'01"	5 00	5 27
C45	15 07	7°30'35"	115 00	7 55
C46	20 22	4°55'11"	235 00	10 12
C47	18 80	7°58'50"	135 00	9 42
C48	8 04	3°24'43"	135 00	4 02
C49	5 10	19°28'16"	15 00	2 57
C50	18 46	70°31'44"	15 00	18 61
C51	18 46	70°31'44"	15 00	18 61
C52	9 10	19°28'16"	15 00	2 57
C53	19 84	1°44'57"	650 00	9 92
C54	11 29	6°28'00"	100 00	5 65
C55	4 01	0°41'10"	335 00	2 01
C56	8 4	0°15'54"	182 00	4 2
C57	11 14	12°30'55"	51 00	5 59
C58	17 81	20°00'13"	51 00	9 69
C59	9 63	1°30'12"	367 00	4 82
C60	20 08	3°08'07"	367 00	10 04
C61	15 28	5°50'12"	150 00	7 65
C62	11 95	4°33'55"	150 00	5 98
C63	8 4	2°02'39"	19 00	3 2
C64	3 59	3°36'31"	57 00	1 80
C65	11 26	5°28'08"	118 00	5 64

VERTICAL CURVE DATA TABLE

CURVE NO.	1	2	3	4	5	6	7	8	9	10
PVI STA.	105+74.26	105+84.14	107+75.29	107+05.22	MPVC	MPVC	MPVC	MPVC	103+93.92	102+70.52
% GRADE (in)	-0.58	-0.58	-0.59	-0.76	1.30	0.91	0.90	1.39	-5.15	-6.00
% GRADE (out)	-4.03	2.44	-2.23	-2.64	-0.5	-0.96	-2.50	-2.32	-0.5	-0.51
LENGTH	354.5	121.80	50.00	121.40	100.00	100.00	100.00	100.00	62.55	100.00
PVI ELEV.	39.33	39.26	30.80	29.97	42.50	31.63	25.60	31.50	25.10	25.33
MPVC ELEV.	39.18	38.97	31.01	29.94	42.28	31.40	25.17	30.92	25.51	24.22
B	0.15	0.19	0.15	0.12	0.10	0.23	0.43	0.59	0.41	0.69

VERTICAL CURVE NOTES

- See sheets 2 & 3 of 13 for vertical curve locations
- All stationing is centerline (CL) stationing except curves 5 thru 8
- Curves 5 thru 8 occur in Cul-de-Sacs and are located within the 'bulbs' or turn-around areas as follows:
Curve #5 Mid point of Vertical Curve (MPVC) is located at the mid-point of the bulb = 94.18 from the PC's
Curve #6 MPVC is located at the mid-point of the bulb = 113.18 from the PC's
Curve #7 MPVC is located at the WEST quarter-point of the bulb = 57.40' from the west P.C.
Curve #8 MPVC is located at the mid-point of the bulb = 115.45 from the PC's
- Curve #9 is a non-symmetrical vertical curve
BVC (Begin vertical curve) = Sta 102.82 81
MPVC = Sta 103.35 32
EVC (End vertical curve) = Sta 103.43.71

HIDDEN DUNES DRIVE BLOW UP

FROM SHT. 2 of 13 Scale: 1" = 20'

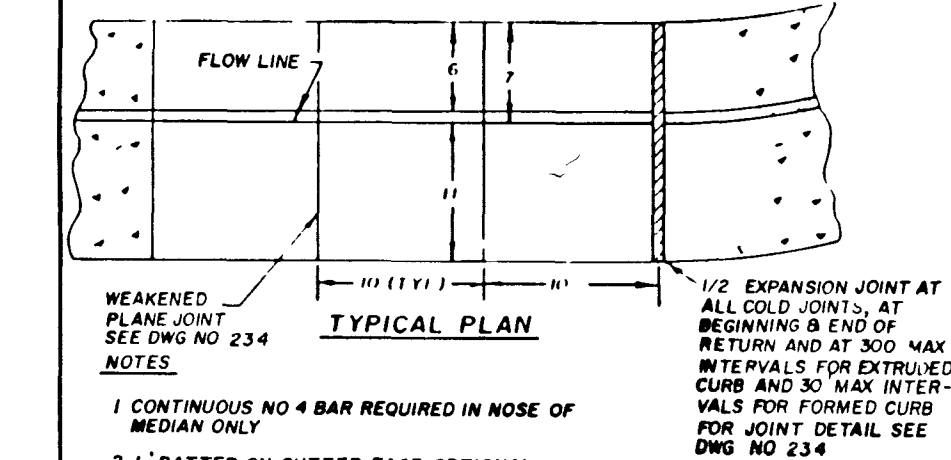
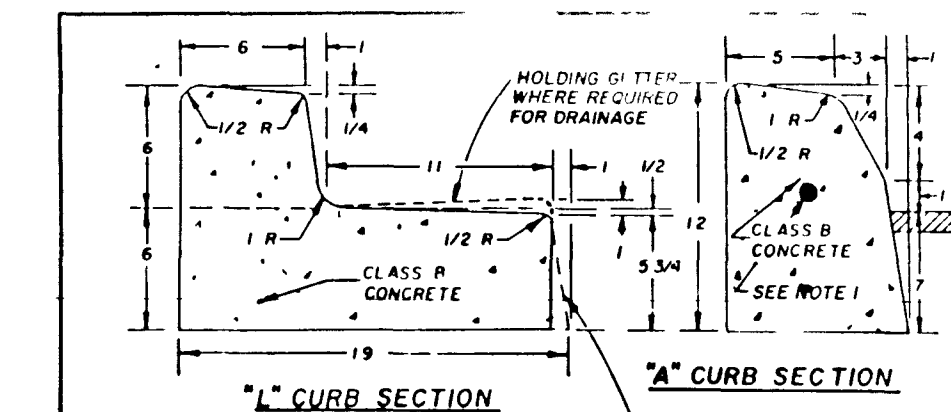
CURVE	ARC	DELTA	RADIUS	TAN LENGTH
C1	9 42	90°00'00"	6 00	6 00
C2	9 65	38°52'12"	15 00	5 00
C3	3 14	180°00'00"	1 00	1 00
C4	3 14	180°00'00"	1 00	1 00

LINE	BEARING	DISTANCE
L1	N 0°20'45" E	2 00

- NOTE
- 6 Patterned Concrete to be placed within shaded area
 - 9 Linear feet of curb transition between PC and Property Line
 - Island curbs are to be A Type per detail this sheet

HIDDEN DUNES DRIVE BLOW UP

FROM SHT. 2 of 13 Scale: 1" = 20'



SPECIFICATION REFERENCE	UNIFORM STANDARD DRAWINGS
302 AGGREGATE BASE COURSE	CLARK COUNTY AREA
301 CONCRETE	"A" AND "L" TYPE
707 JOINT MATERIAL	ISLAND CURB
DATE	DWG NO 219 PAGE NO 25

REVISION

REV	DATE	BY	REVISION
1	11-21-89	PV	REVISE DATA TABLES
2	11-21-89	PV	ADDED BLOW UP & ISLAND CURB DETAIL DWG 233

BERGHEER NEVADA
CITY OF LAS VEGAS

PLANNERS
CONSULTING ENGINEERS
2300 PASEO DEL PRADO BUILDING A SUITE 100
LAS VEGAS, NEVADA 89102 PHONE (702) 873-7550

vtm nevada

DATA TABLE

PROJECT
DESERT SHORES RACQUET CLUB (LOT 9)

TITLE

NO NO. 3691
BY PEO
DATE OCT, 1988
SCALE NONE

SHEET
4
OF 13 SHEETS

