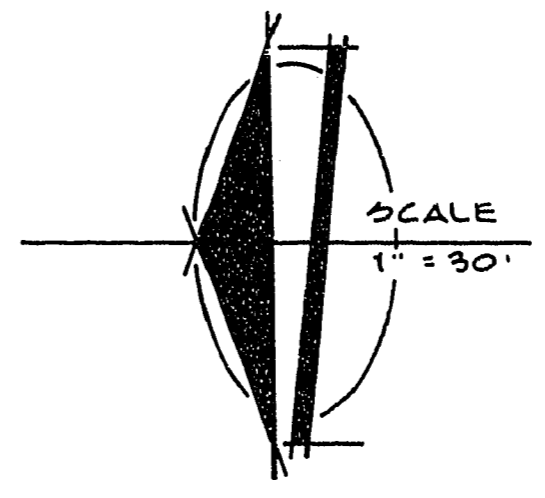


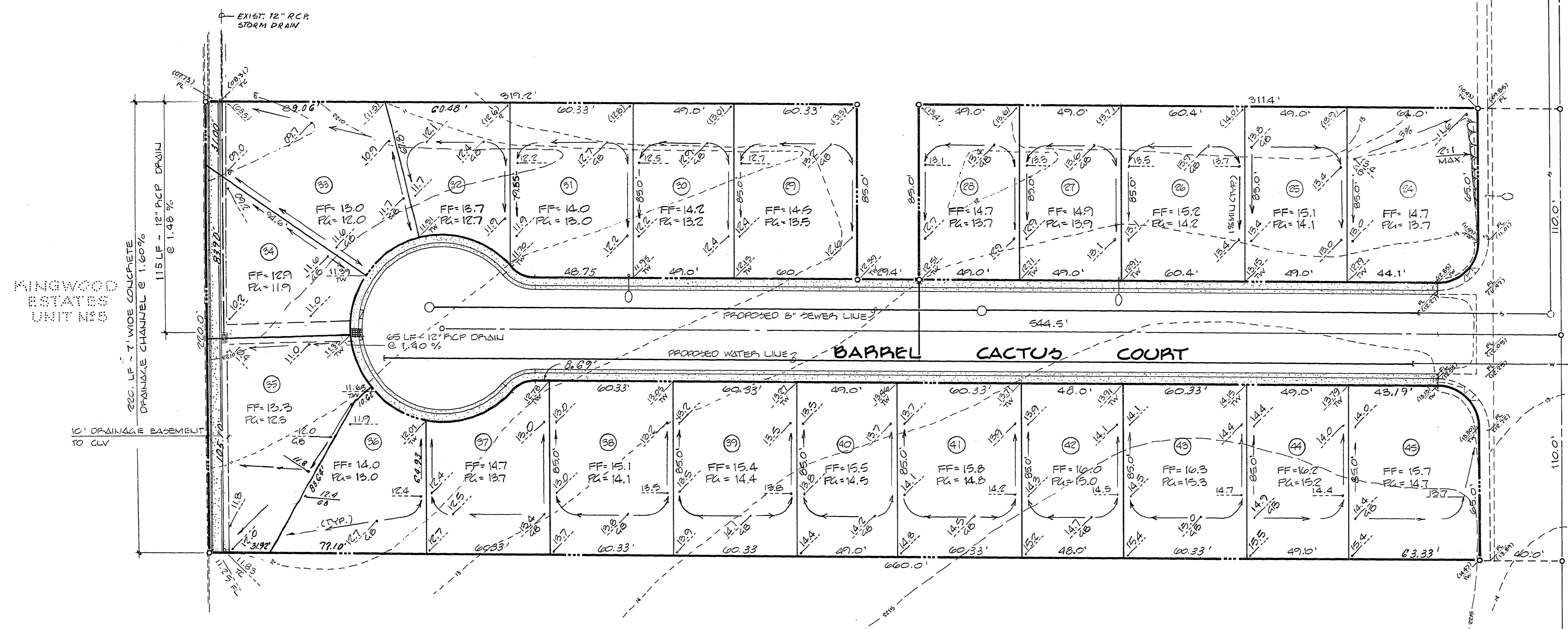
DESERT PARK HOMES - UNIT N<sup>o</sup> 1



- LEGEND**
- POINT AS SHOWN
  - STREET CENTERLINE
  - PROPERTY LINE
  - LOT LINE
  - - - EXISTING CONTOUR LINES
  - EXISTING ELEVATION
  - DESIGN ELEVATION
  - TW TOP OF WALK
  - FL FLOW LINE
  - TG TOP OF CURB
  - FG FINISH GRADE
  - PG PAD GRADE
  - FF FINISH FLOOR
  - GB GRADE BREAK
  - 1.0% MIN. → SHALE FLOW DIRECTION

**BENCH MARK**

CLV BM BOLT & PLATE IN TOP OF CURB  
AT SOUTHWEST CORNER OF VEGAS DR. AND  
JONES BLVD.  
ELEV. = 2275.98 CLV DATUM.



KINGWOOD  
ESTATES  
UNIT N<sup>o</sup> 5

VEGAS DRIVE

TORREY PINES DR.

**UTILITY NOTE**

The location of underground utilities shown hereon has been determined from surface evidence of their existence or from information obtained from the utility companies. The engineer accepts no liability for the existence or non-existence of utility lines. Contractors and others using this map must confirm the location of underground lines or structures with the utility companies prior to commencing any excavation.

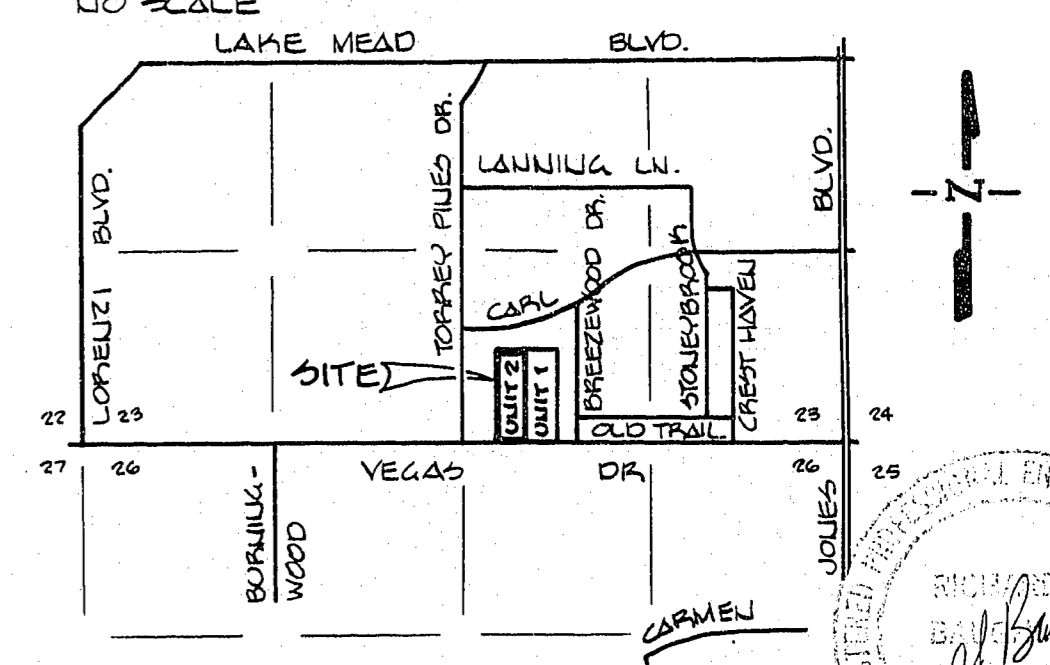
**CALL BEFORE YOU DIG 1-800-227-2600**

**APPROVALS**

*[Signature]* 9/17/85  
ZLV QUALITY CONTROL DATE

*[Signature]* 9-20-85  
ZLV CHIEF, LAND DEVELOPMENT & FLOOD CONTROL DATE

**VICINITY MAP**



APP'D	
REVISIONS	
DATE NO	
PREPARED FOR:	PARK K. HAWES, INCORPORATED
DATE	MAR. 6, 1985
DESIGN	PJA
DRAWN	PJA
CHECK	
SCALE	1" = 30'
BAUGHMAN & TURNER	MINING ENGINEERS
CIVIL ENGINEERS	LAND SURVEYORS
LAS VEGAS, NEVADA 89102	
2335 WEST CHARLESTON BOULEVARD 702-797-8771	
<b>GRADING PLAN</b>	
SECTION 28, TOWNSHIP 20 SOUTH, RANGE 60 EAST, MIDDLEMOUNTAIN, NEVADA, CLARK COUNTY, NEVADA	
DESERT PARK HOMES - UNIT N <sup>o</sup> 2	
SHEET	1
PROJ. NO	FB155 P89