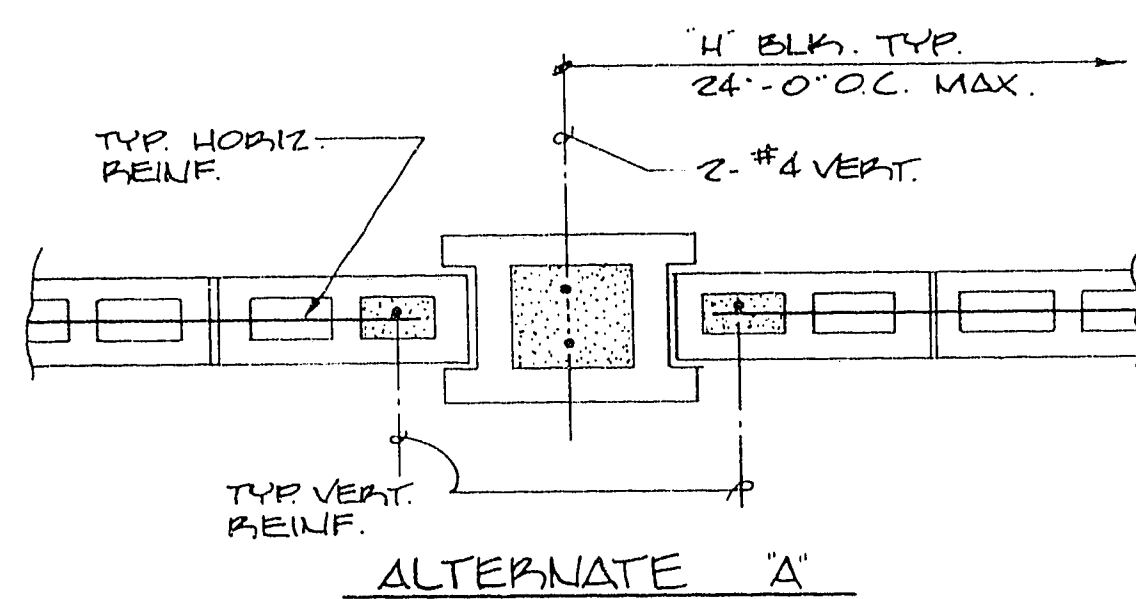
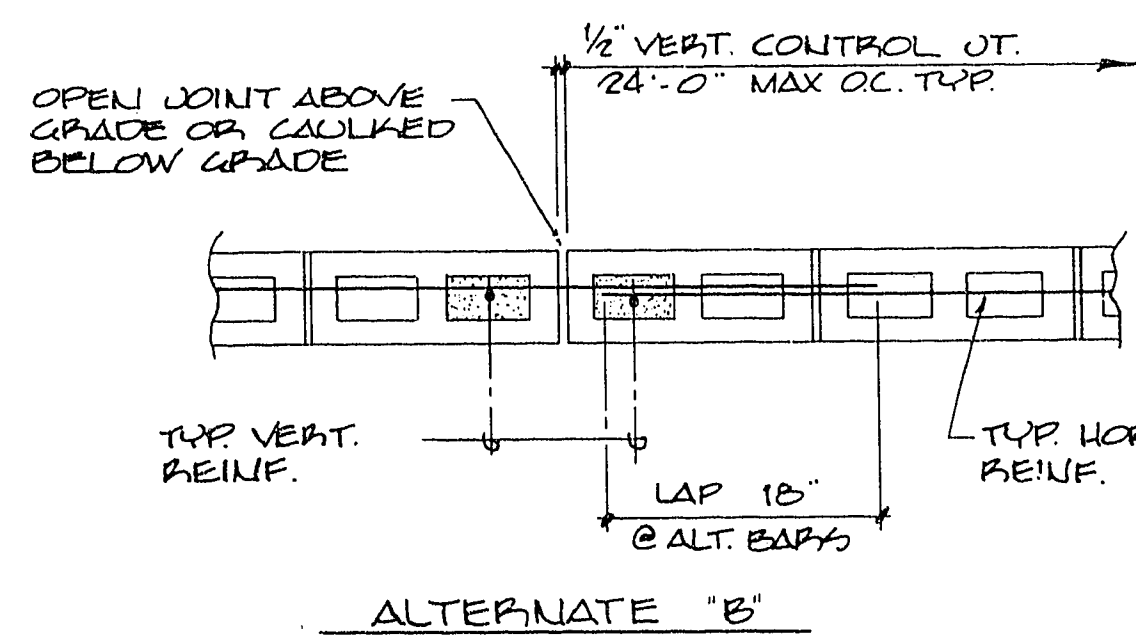


**BLOCK WALL DETAIL (1)**  
NO SCALE

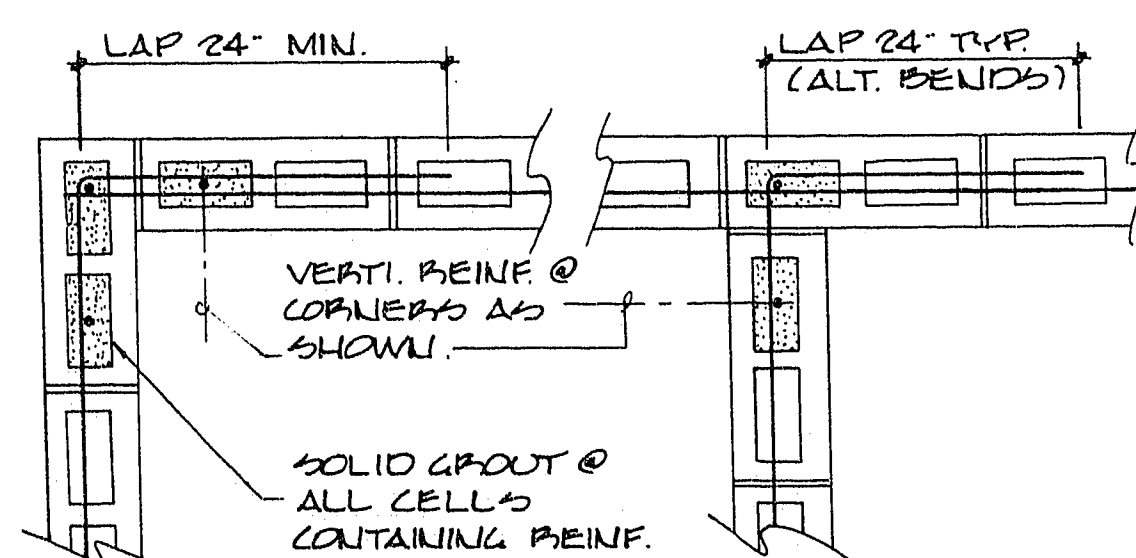


**ALTERNATE 'A'**



**ALTERNATE 'B'**

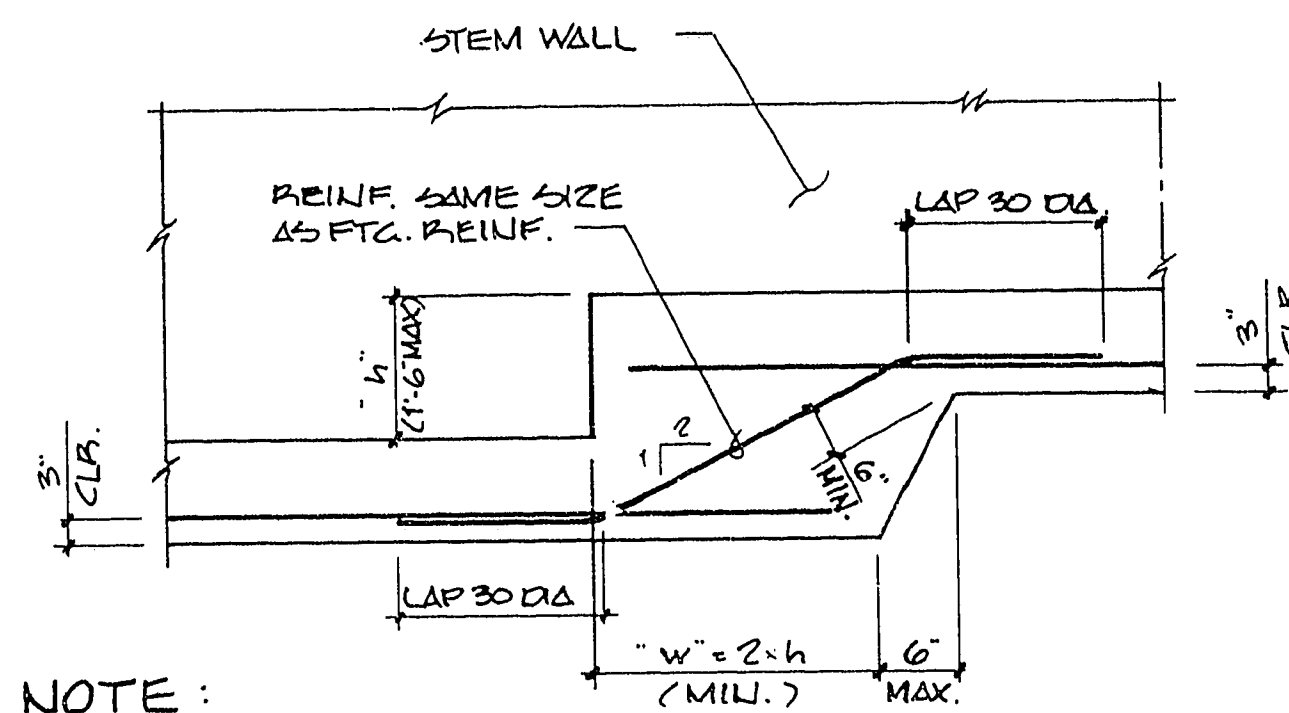
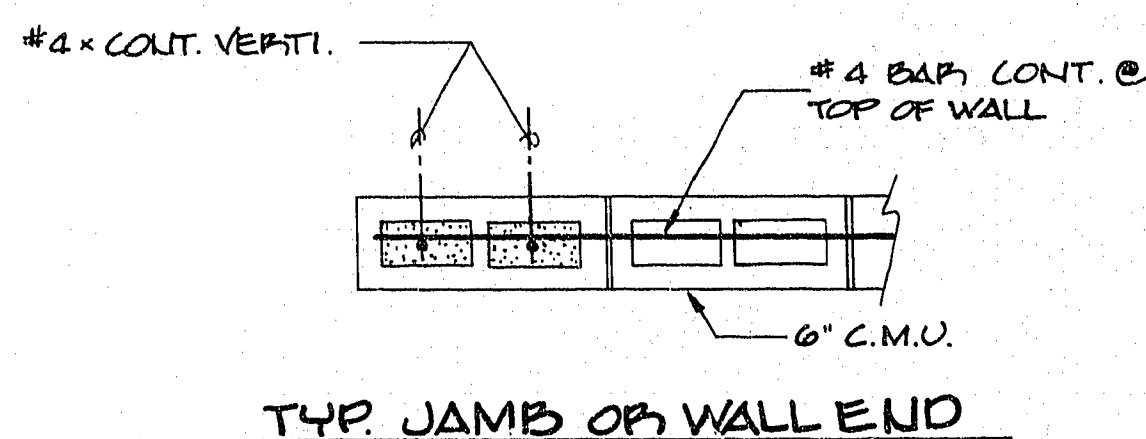
**TYPICAL CONTROL JOINT**



**NOTE:**

- CORNER BARS (Γ) MAY BE USED IN LIEU OF BENDING WALL REINF. WITH EACH END LAP TO BE 24" MIN.

**TYP. JAMB OF WALL END**

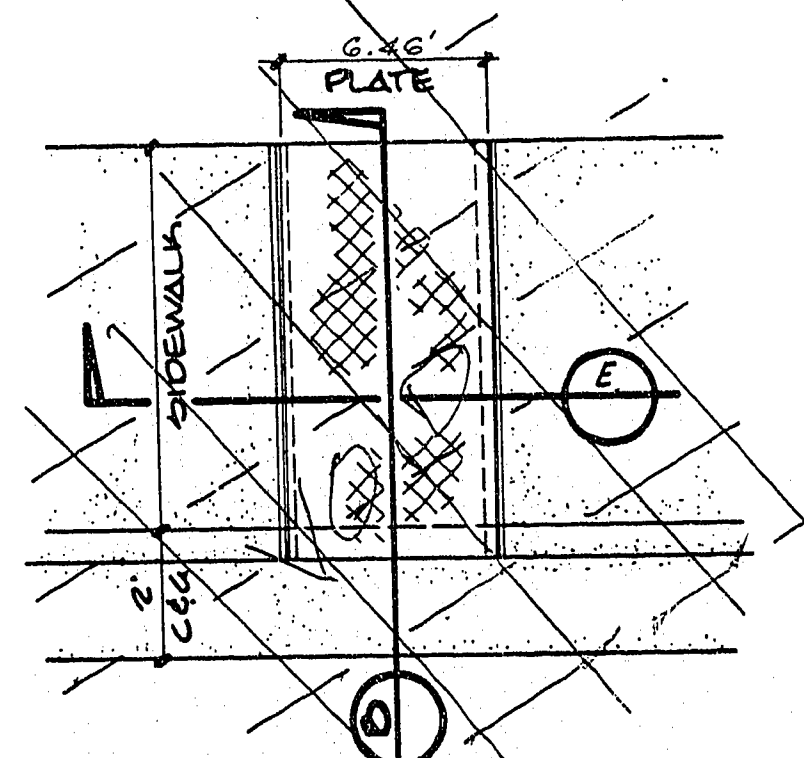


**NOTE:**

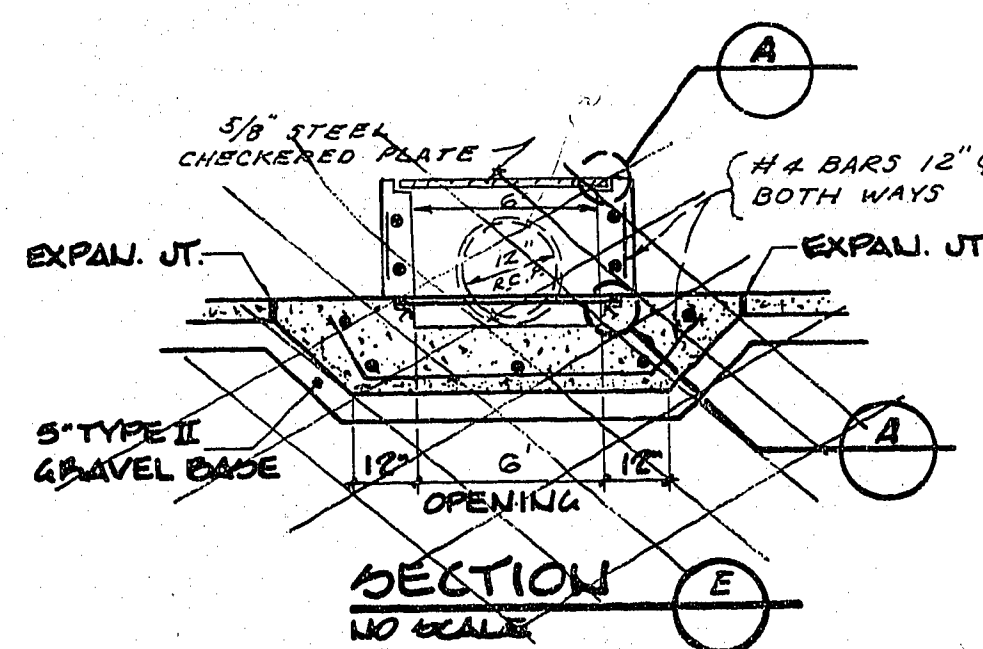
WHERE SPLICES OF DIFFERENT SIZE BARS OCCUR, LAP IS BASED ON LARGER DIAMETER. WHERE REINF. CHANGES AT STEPPED FTG. USE GREATER REINF. AT SPLICE BARS

**TYPICAL STEPPED FOOTING**

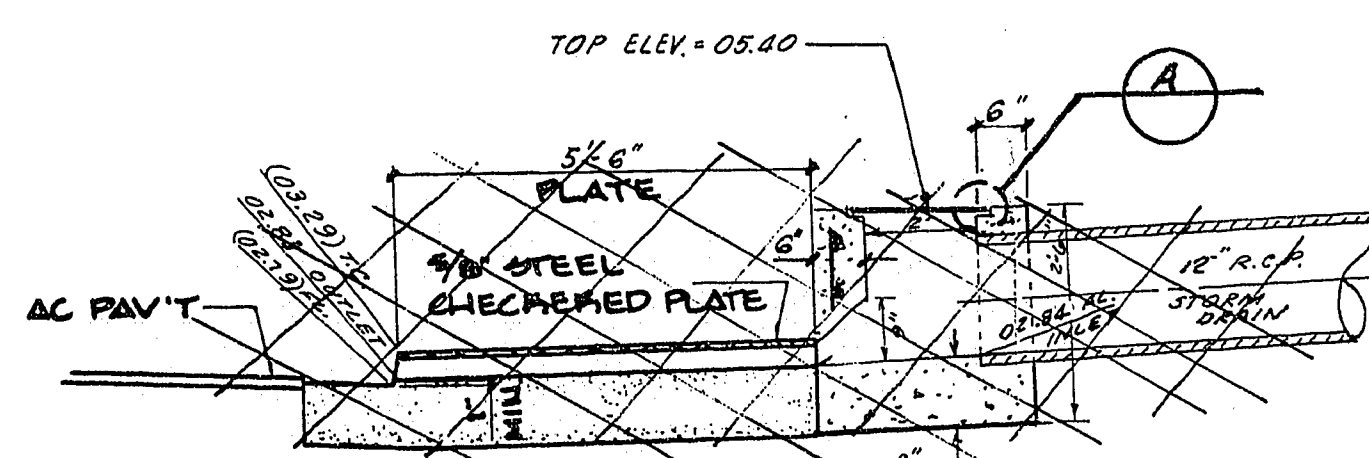
(SINGLE STEP)



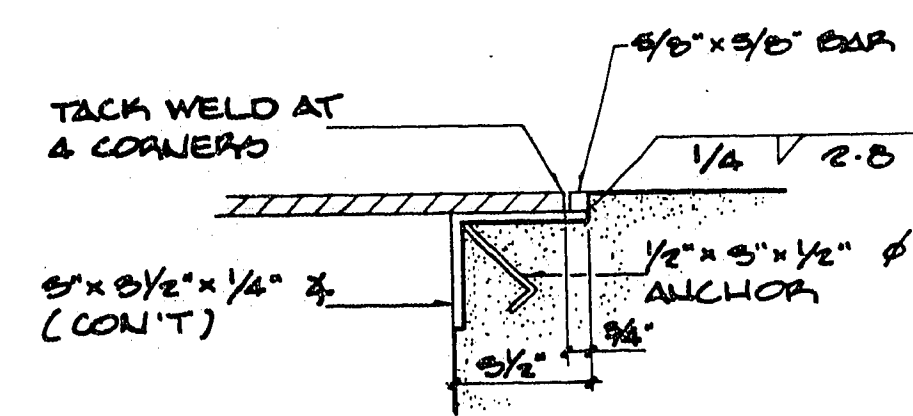
**SIDEWALK DRAIN DETAIL (C)**  
NO SCALE



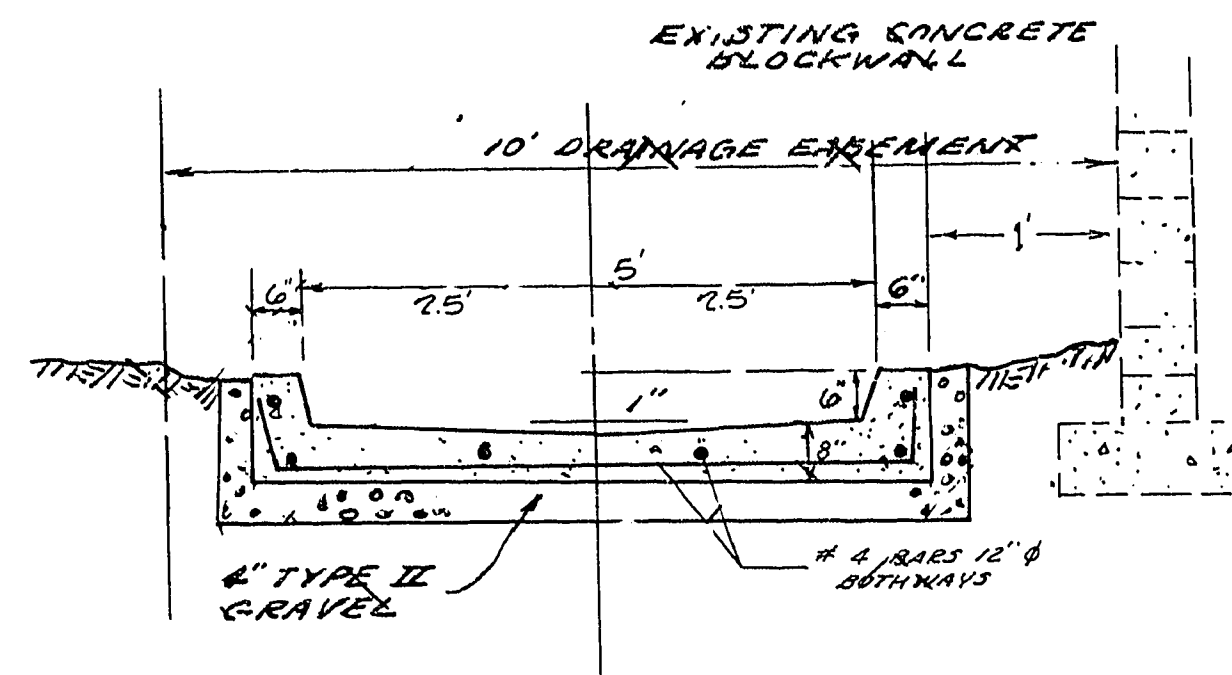
**DETAIL (A)**  
NO SCALE



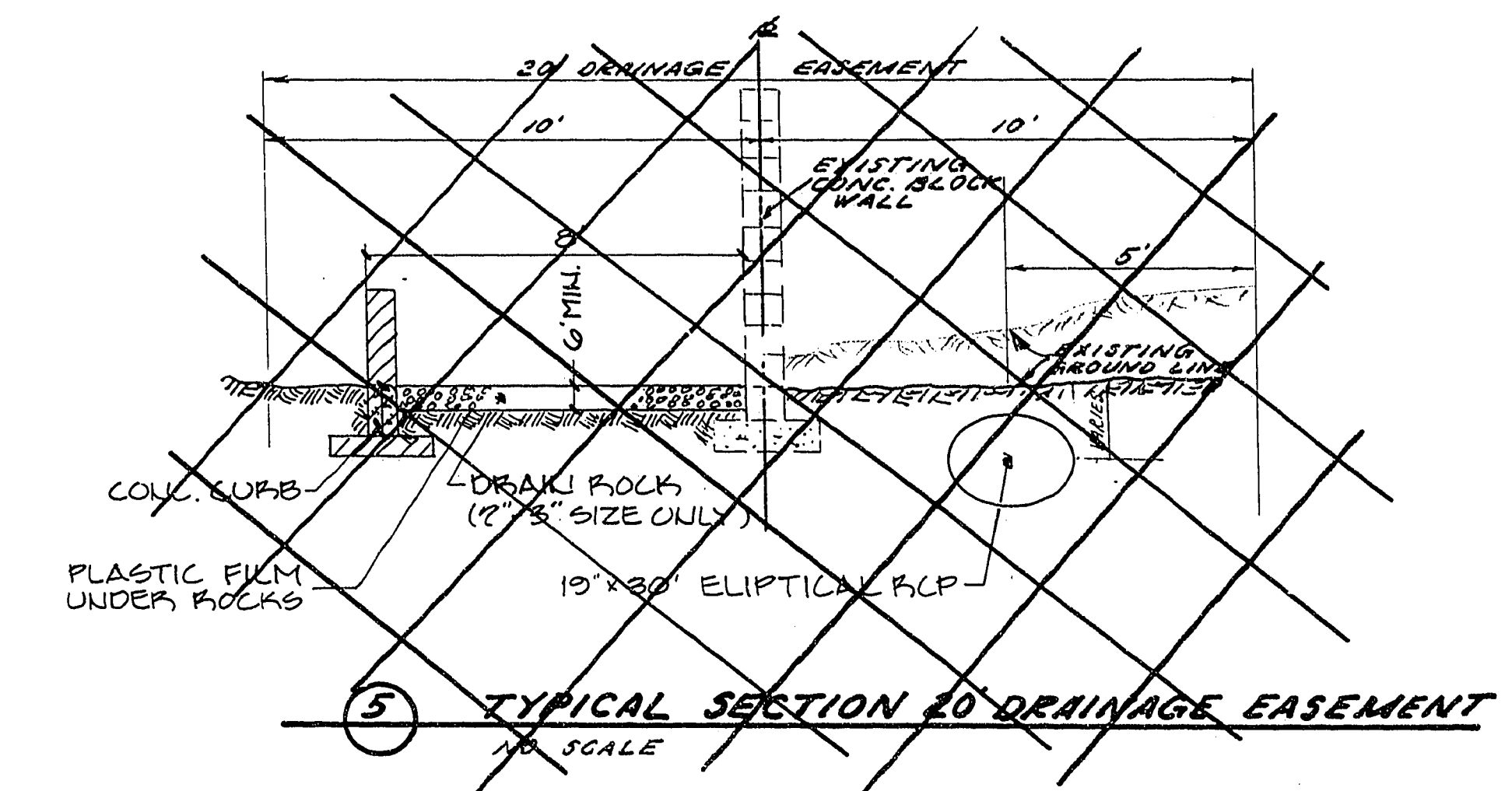
**SECTION (B)**  
NO SCALE



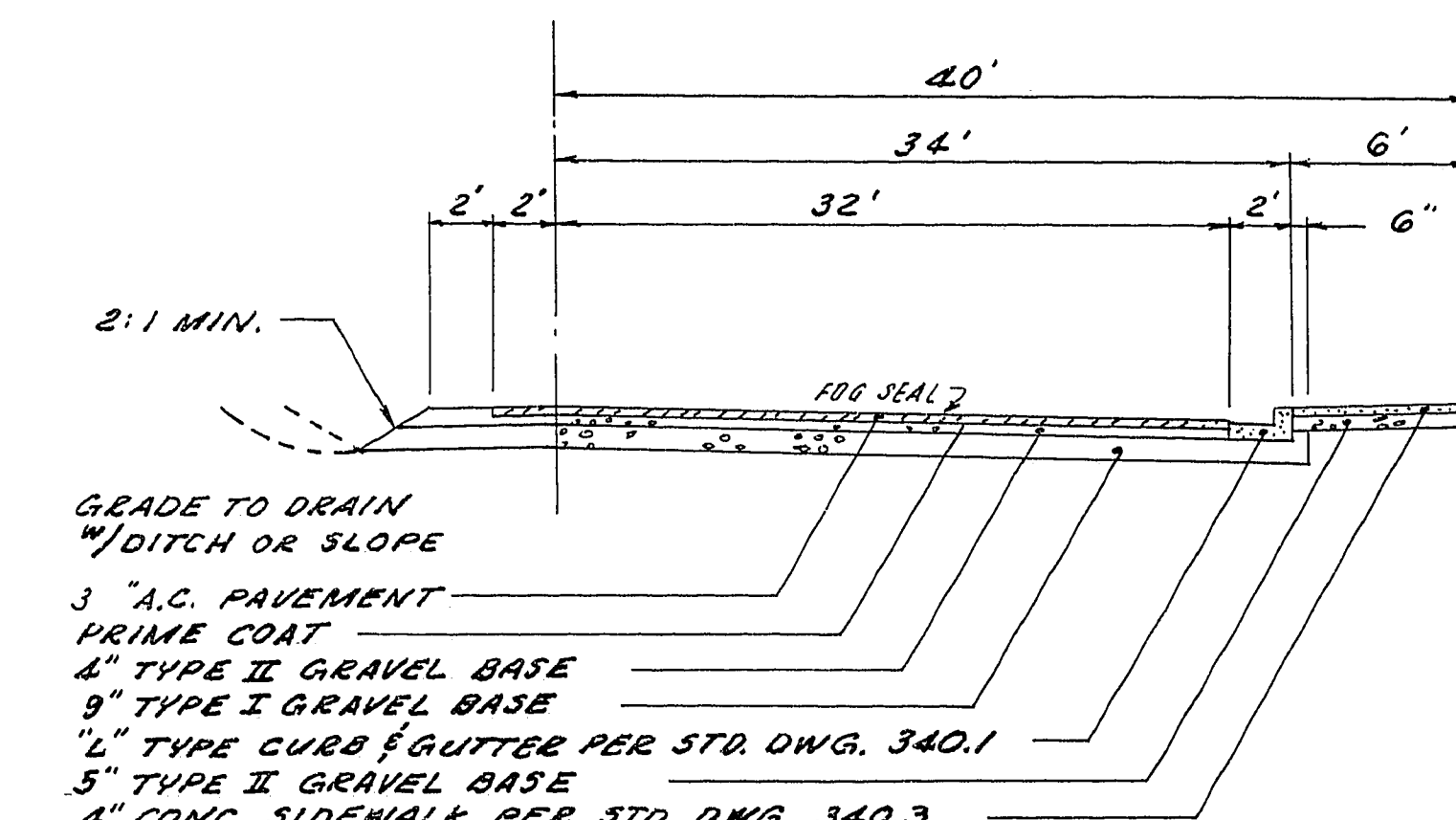
**DETAIL (A)**  
NO SCALE



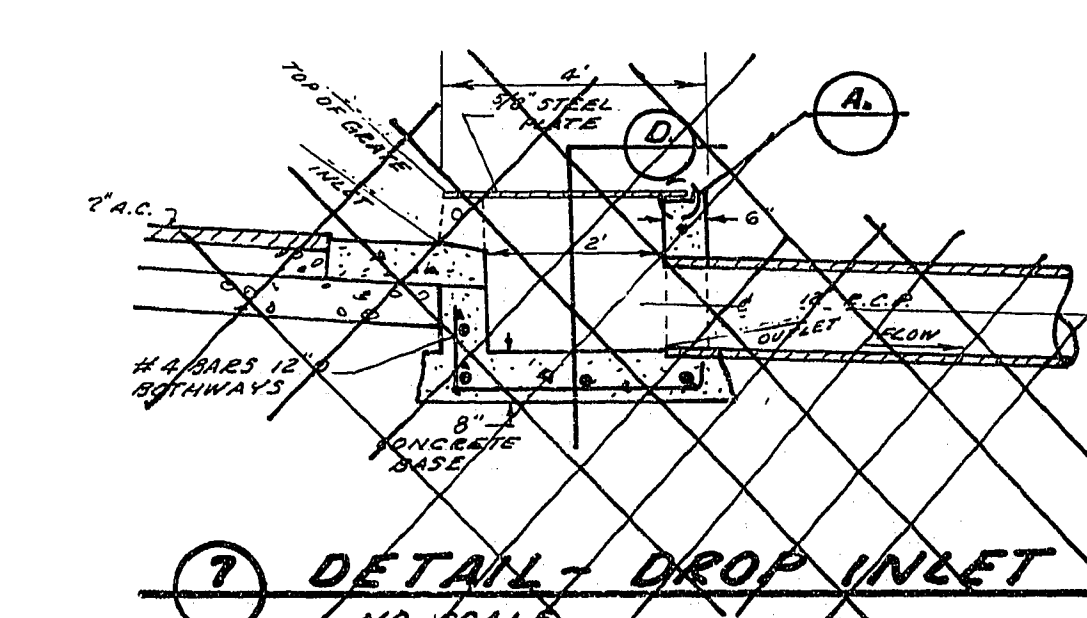
**DRAIN CHANNEL DETAIL (4)**  
NO SCALE



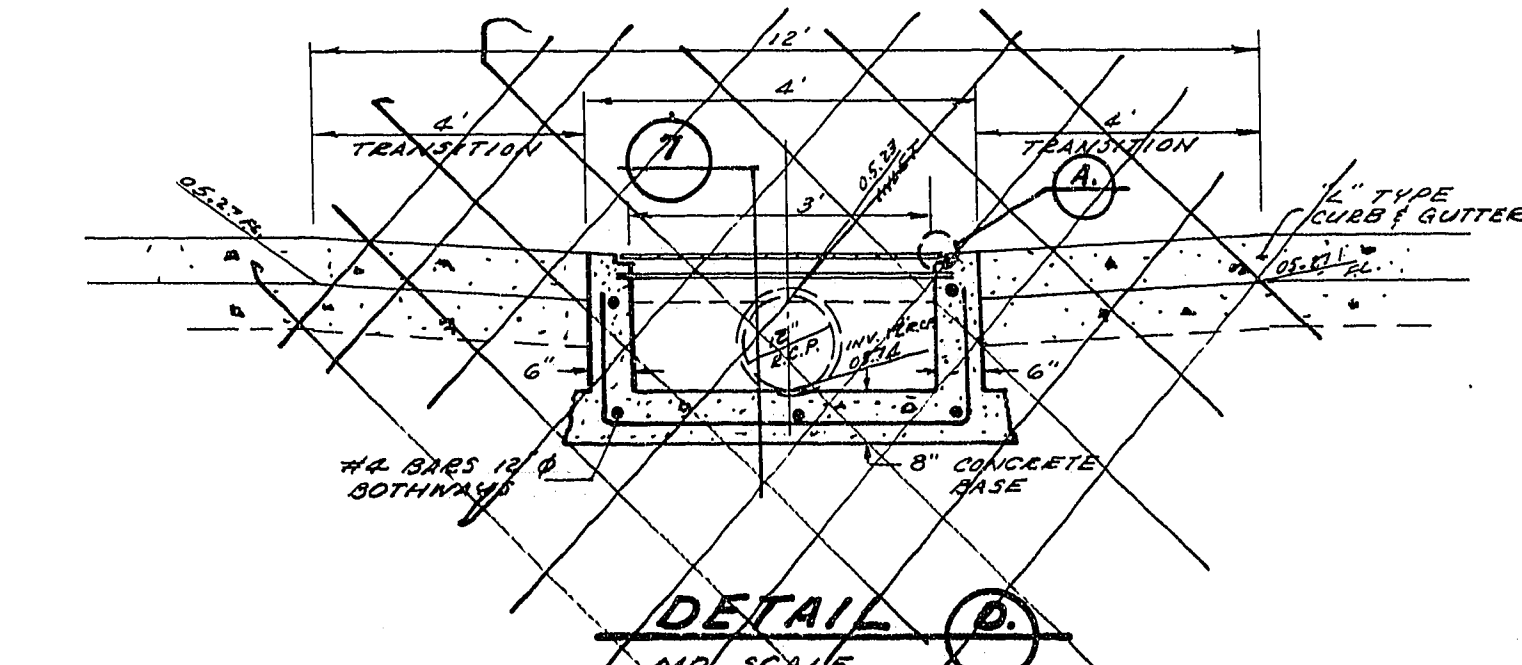
**TYPICAL SECTION 20 DRAINAGE EASEMENT (5)**  
NO SCALE



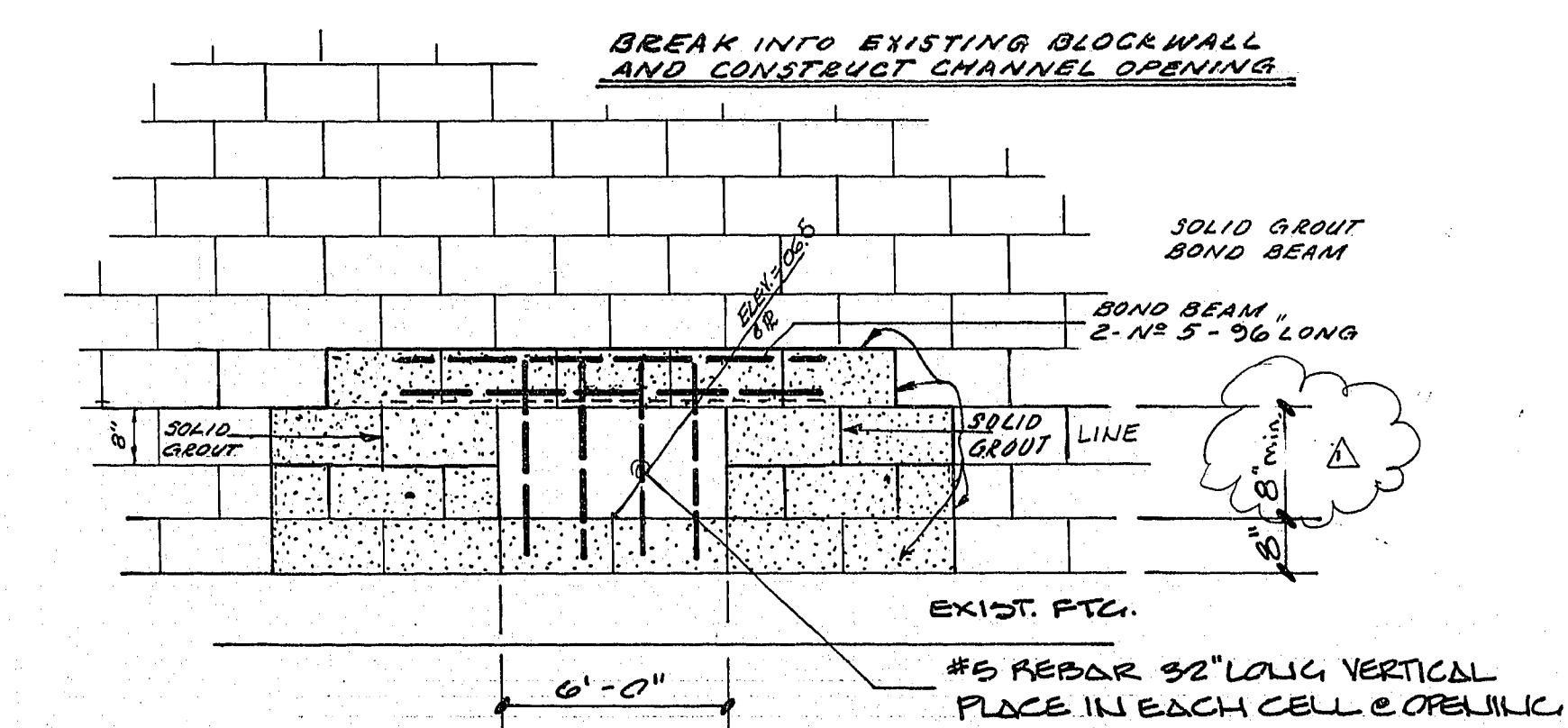
**VEGAS DRIVE STREET SECTION (6)**  
NO SCALE



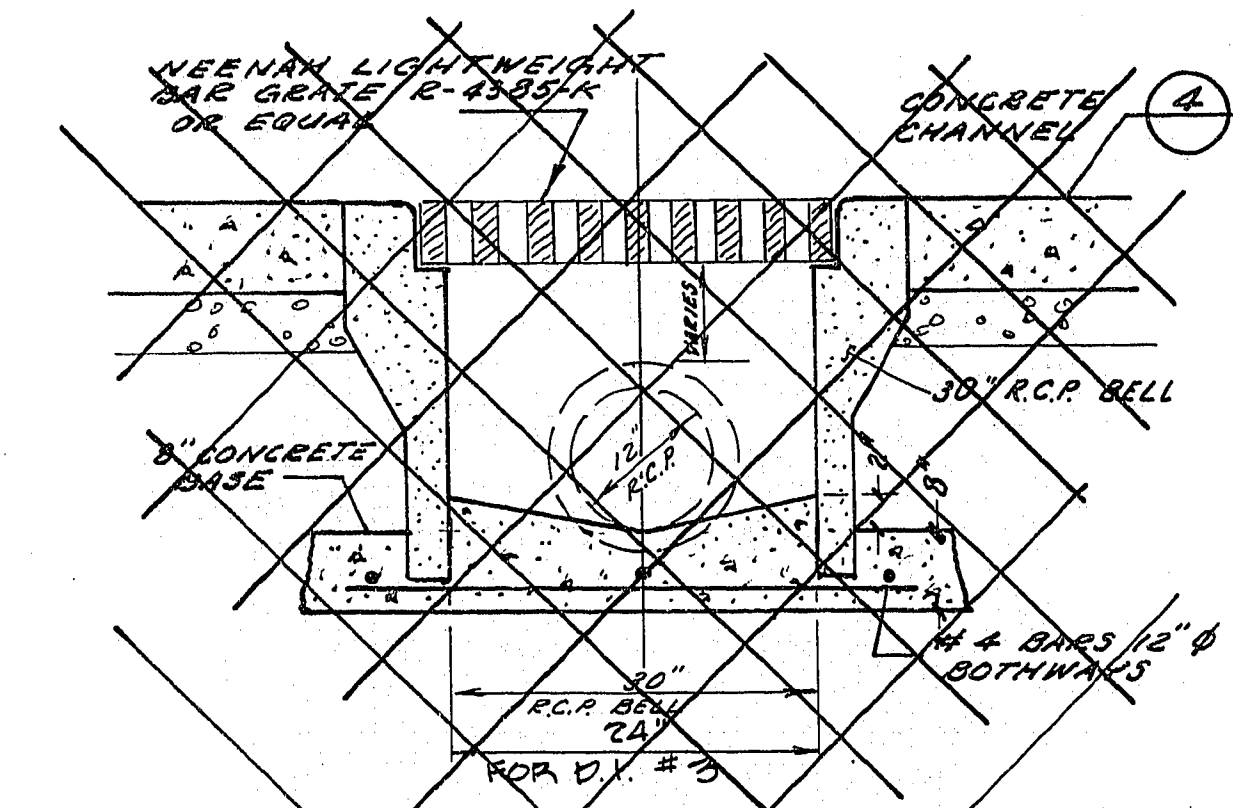
**DETAIL DROP INLET (7)**  
NO SCALE



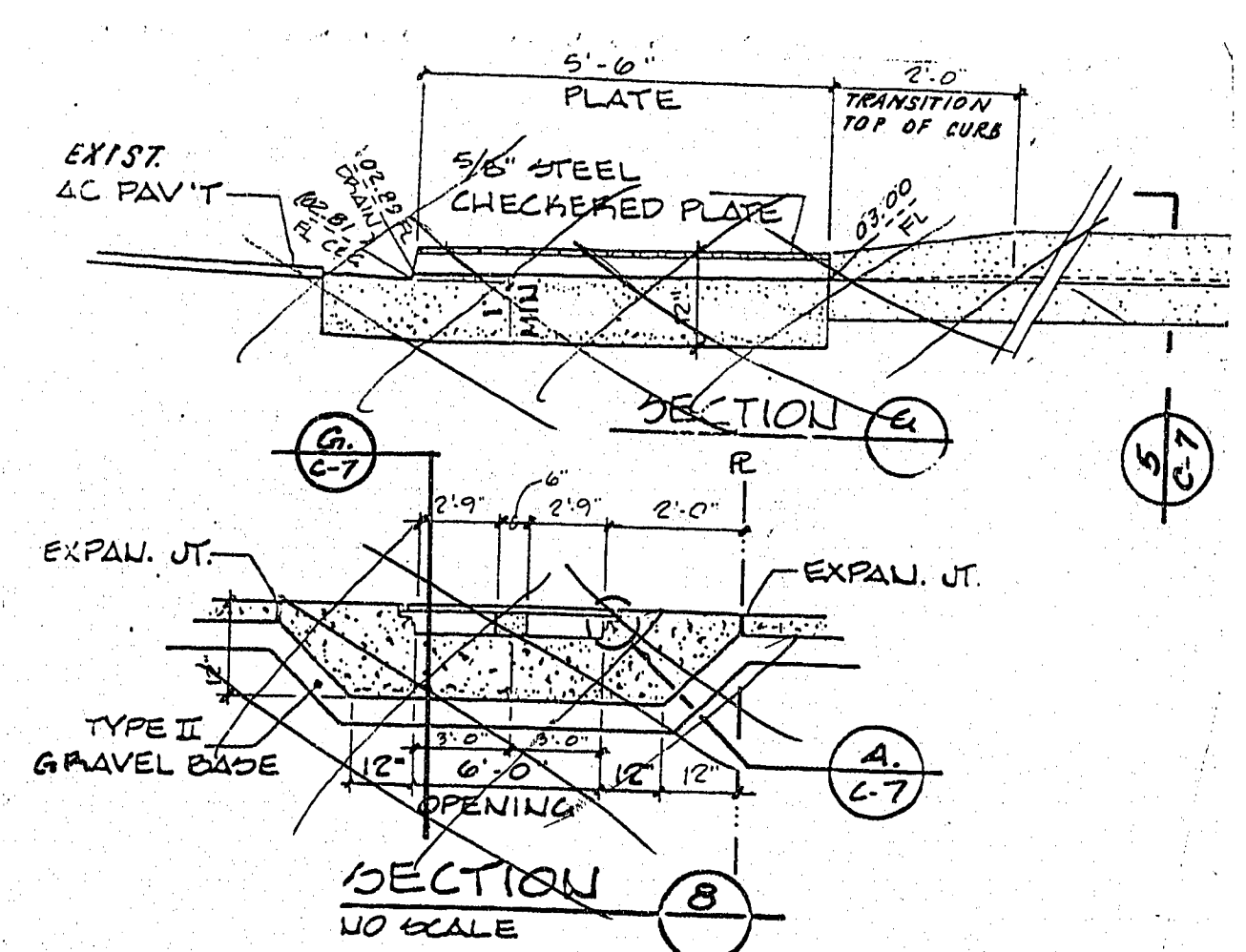
**DETAIL (D)**  
NO SCALE



**DETAIL - OPENING THRU BLOCKWALLS (2)**  
NO SCALE



**DETAIL - DROP INLET (3)**  
NO SCALE



**SECTION (A), (B), (C), (D), (E), (F), (G), (H)**  
NO SCALE

**APPROVAL**  
DATE: 6-11-85  
CITY OF LAS VEGAS LAND DEVELOPMENT AND FLOOD CONTROL

DATE: FEBRUARY 1985  
DESIGN: J.L.D.M.  
DRAWN: J.L.D.M.  
CHECK: [Signature]  
SCALE: AS SHOWN

PREPARED FOR: PARK K. HAWES  
5700 PARADISE RD. # 200  
LAS VEGAS, NEVADA 89120  
PH: 752-2222

BAUGHMAN & TURNER  
MINING ENGINEERS  
LAND SURVEYORS  
3325 WEST CHARLESTON BOULEVARD  
LAS VEGAS, NEVADA 89102  
702-796-9771

DETAILS  
SECTION 23, TOWNSHIP 20 SOUTH, RANGE 60 EAST, MERIDIAN 111  
CITY OF LAS VEGAS, CLARK COUNTY, NEVADA  
DESERT PARK HOMES

SHEET 6-14 OF 6  
PROJ. NO. 107Y-1241