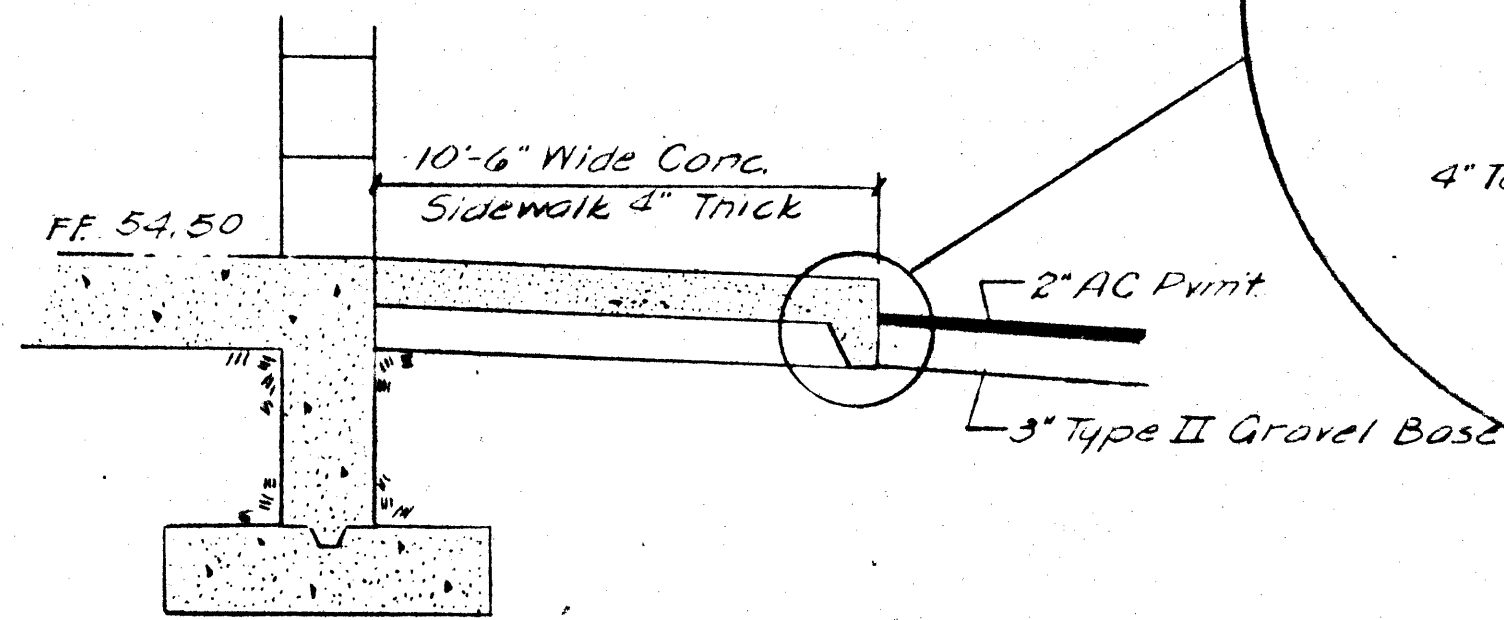
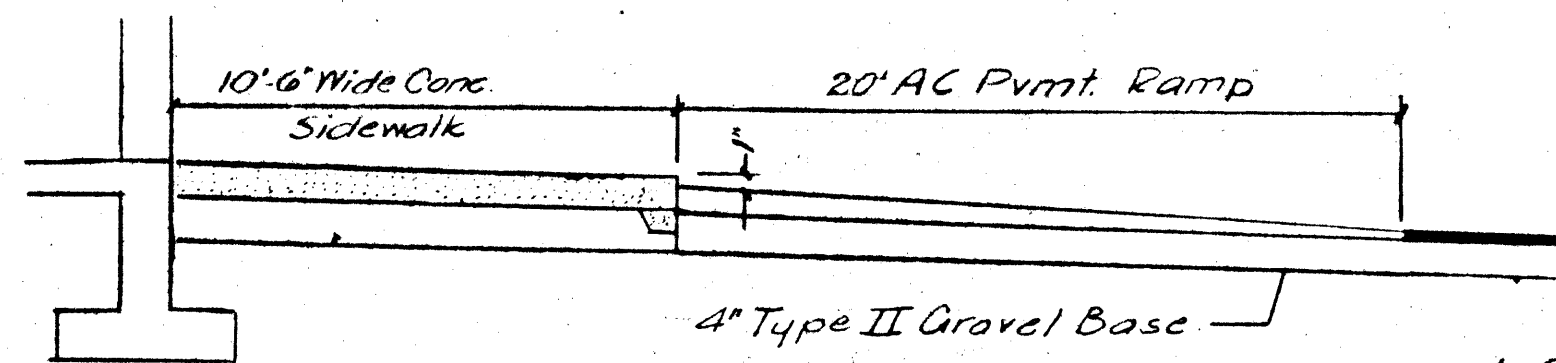


CHARLESTON BLVD  
SECTION A-A  
NO SCALE

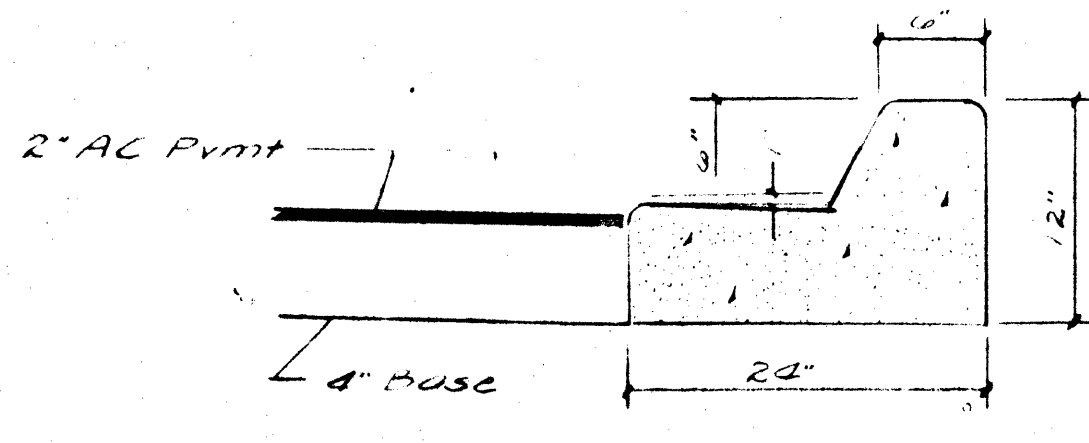


SECTION B-B  
NO SCALE

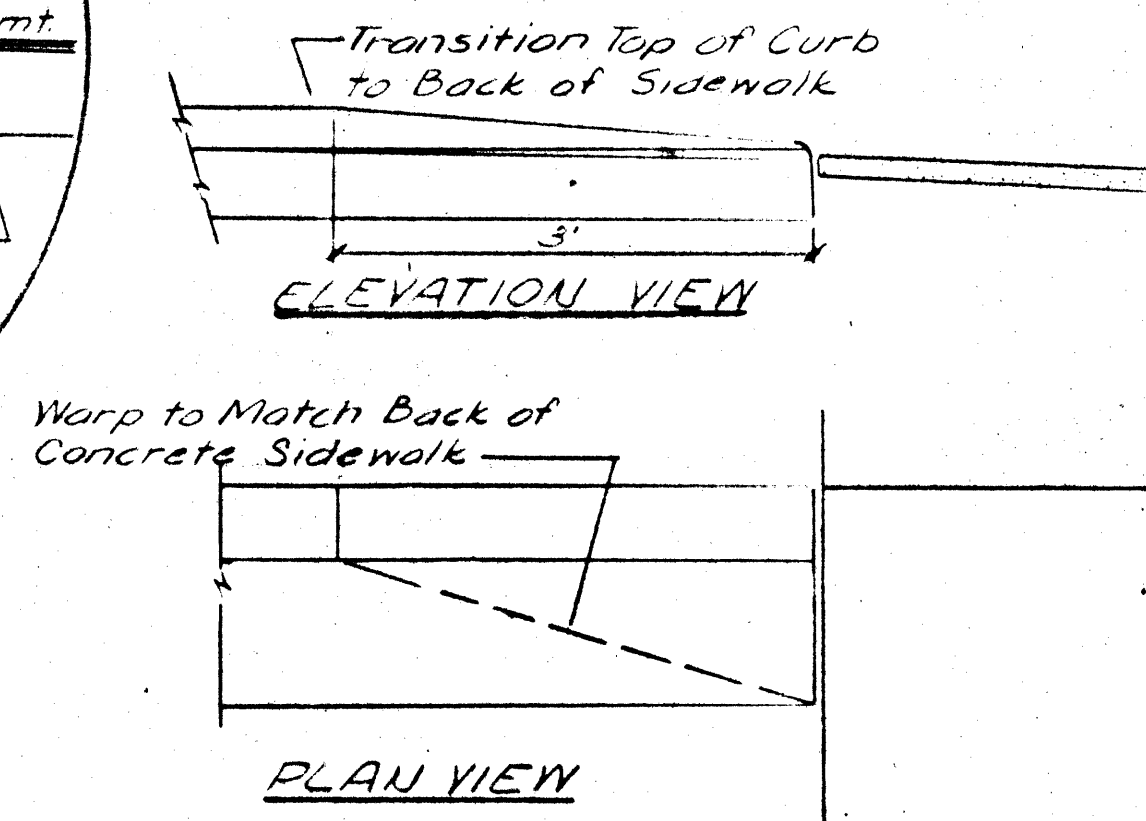
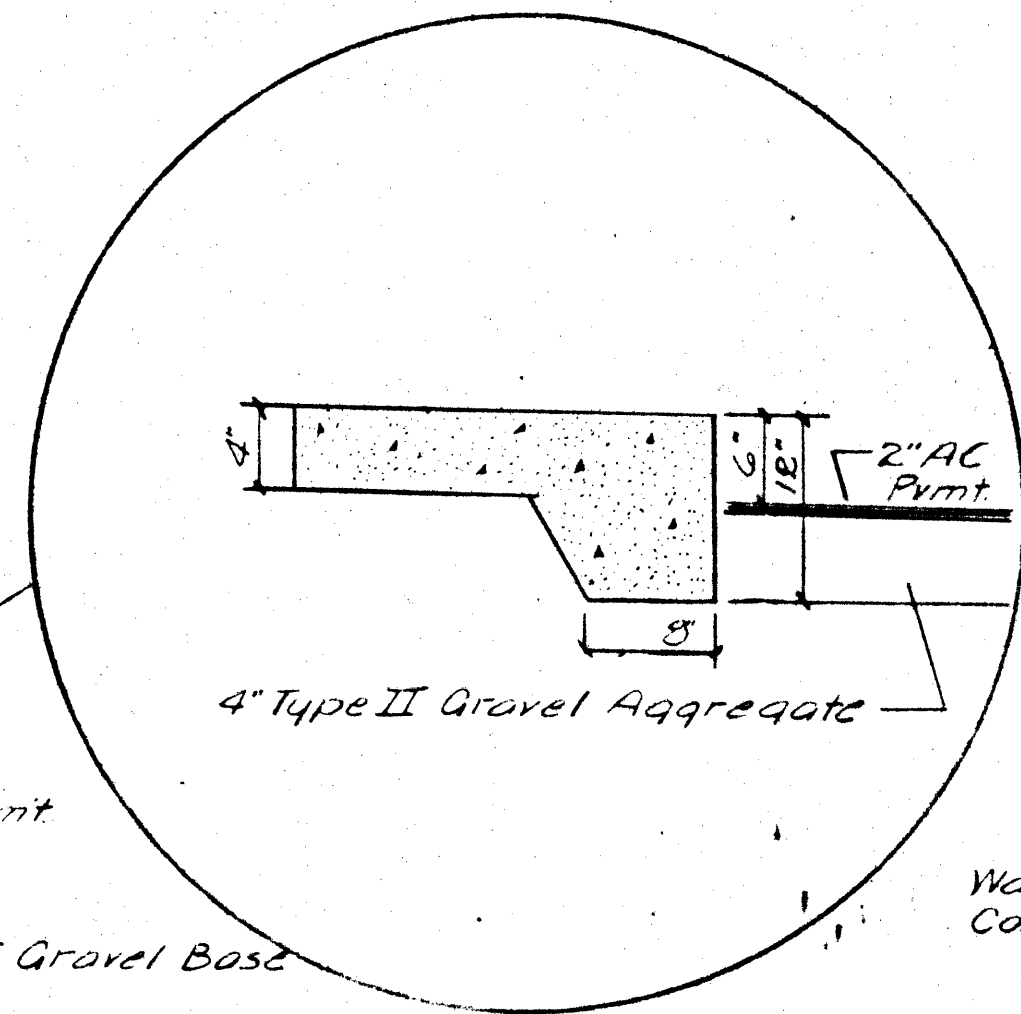
Note: For Building Construction  
Details, Footing Details, Floor Details &  
Plan See Architectural Drawings.



SECTION C-C  
NO SCALE



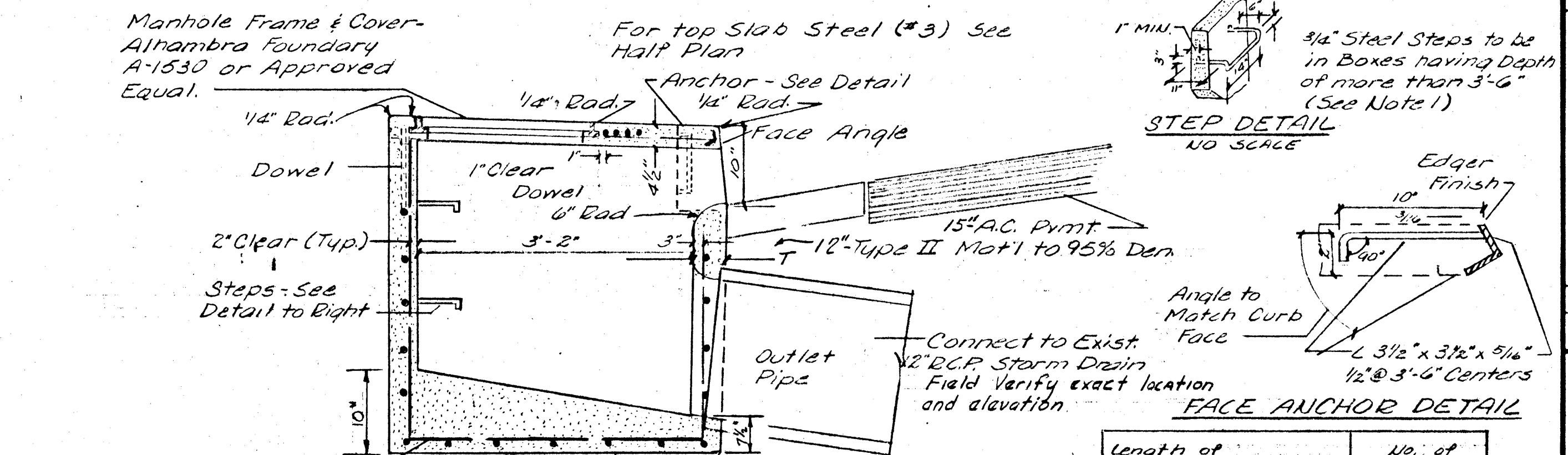
DETAIL 1  
NO SCALE



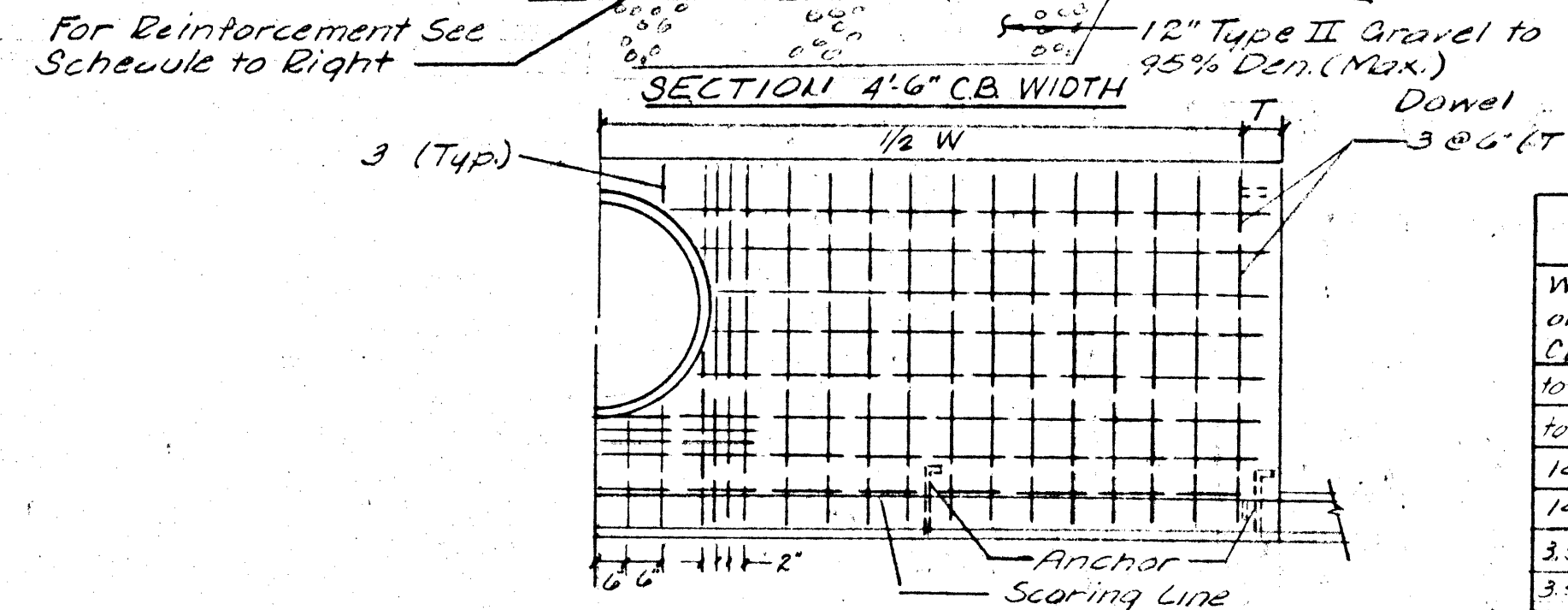
PLAN VIEW

DETAIL 2  
NO SCALE

Manhole Frame & Cover-  
Alhambra Foundary  
A-1630 or Approved  
Equal.



STEP DETAIL  
NO SCALE



HALF PLAN (SYM)  
FOR CB. W. = 4'  
NO SCALE

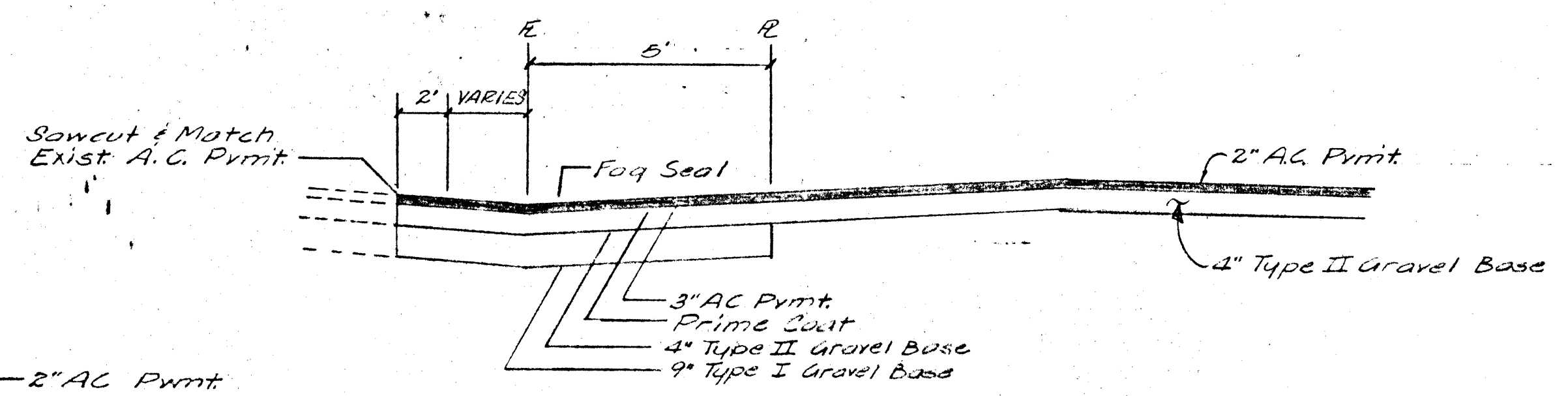
NOTES:

1. Steps: 3/4" Dia. Cast in Place Conc. After Fabrication "V" to 3'-0" (Incl) Place 1 Step 12" Above Floor of Basin. "Y" over 3'-0" Place Steps @ 12" Intervals From the Floor of Basin W/ the Top Step 12" Min. Below Top of the M.H.
2. Curvature of the Lip and Side Walls at Gutter Opening Shall be Formed by Curved Forms.
3. Outlet Pipe Shall be Trimmed to the Final Shape & Length before Concrete is Poured.
4. Floor of Basin Shall be Troweled to a Hard Smooth Surface & Shall Slope from all Directions to the Outlet.
5. Manhole Shall be Placed Along the Back Wall.
6. Surface of All Exposed Concrete Shall Conform in Slope, Grade, Color, Finish & Scoring to Exist. or Proposed Curb & Walk Adjacent to the Basin.

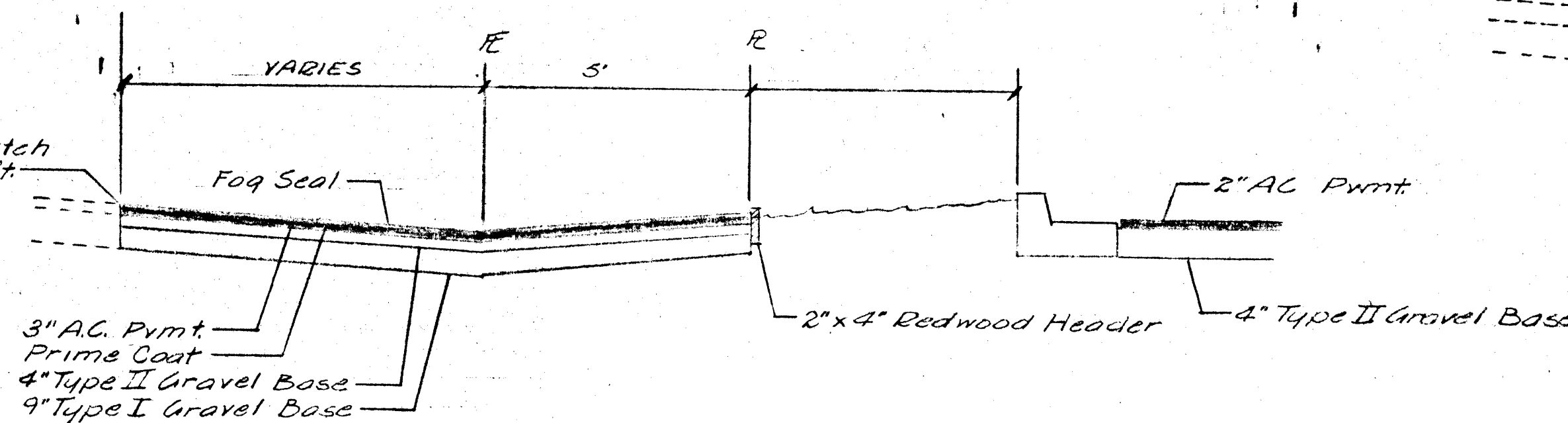
4'-6" DROP INLET DETAILS  
NO SCALE

Length of Curb Opening	No. of Anchors
3'-0" or LESS	2
7'-0"	3
10'-0"	4
13'-0"	5
21'-0"	7

W of CB (ft)	V (ft)	T (ft)	Wall & Floor (Reinforcement)
10.7	4	0	#3 @ 6" O.C. E.W.
10.7	4	0	#4 @ 12" O.C. E.W.
12	4	0	#3 @ 6" O.C. E.W.
14	4	0	#4 @ 12" O.C. E.W.
3.5	3.5	0	#3 @ 6" O.C. E.W.
3.5	3.5	0	#4 @ 12" O.C. E.W.

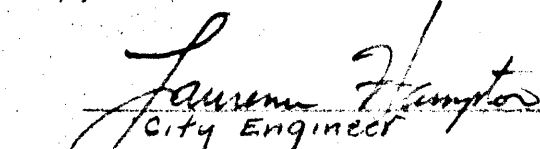
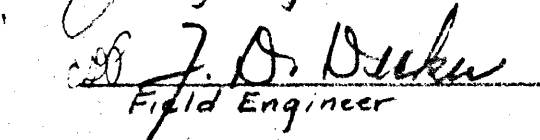


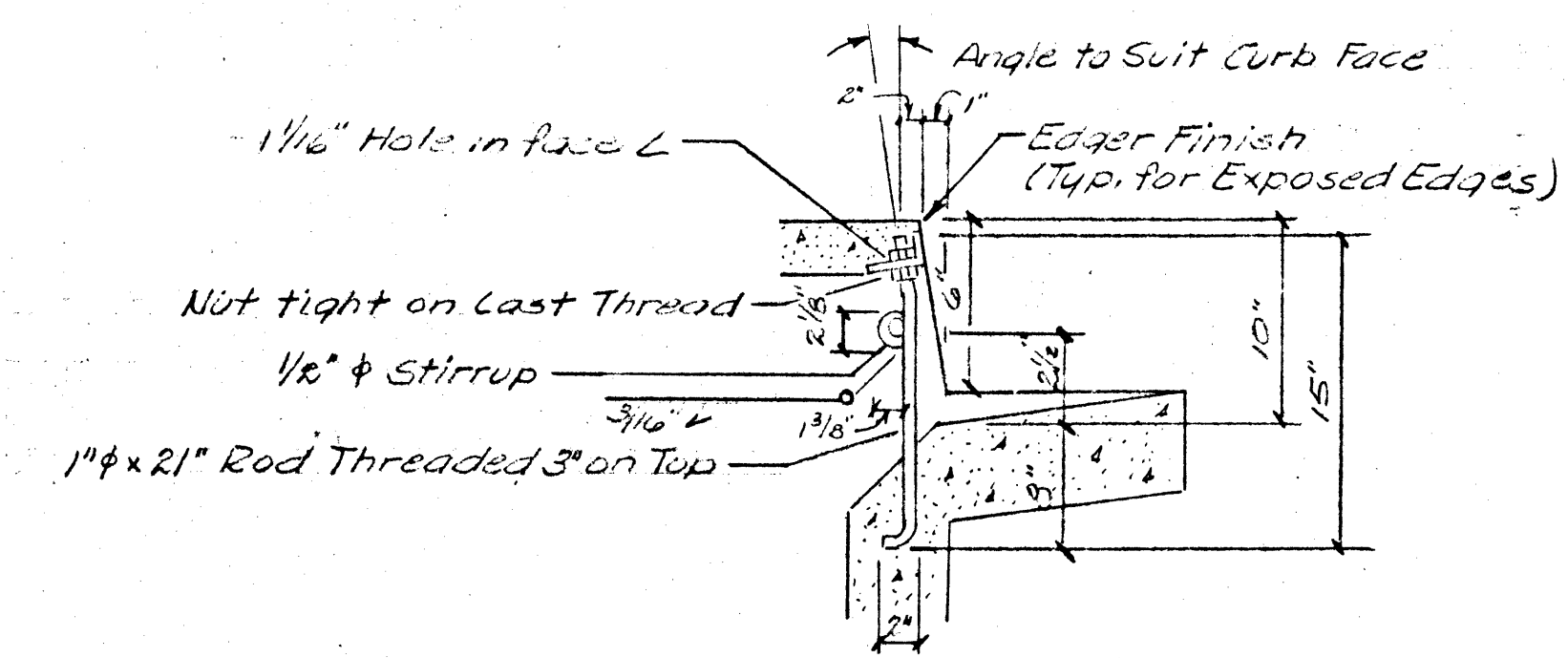
LAMB BLVD  
SECTION E  
NO SCALE



LAMB BLVD  
SECTION D  
NO SCALE

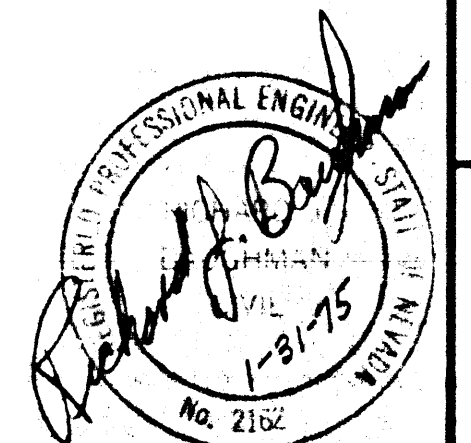
Approvals-

  
 City Engineer  
 Date \_\_\_\_\_  
  
 Field Engineer  
 Date 1-29-75



CURB SUPPORT DETAIL  
NO SCALE

Field Book 90 Page 134 to 137



APP'D  
 REVISIONS  
 DATE  
 PREPARED FOR  
 EXPRESS LAKE FOOD STORES  
 DATE DEC. 1974  
 DESIGN R/JG  
 DRAWN G/JJ  
 CHECK R/JG  
 SCALE 1/8" = 1'-0"  
 BAUGHMAN, HAUGHT & TURNER  
 CIVIL ENGINEERS  
 MINING ENGINEERS  
 LAND SURVEYORS  
 LAS VEGAS, NEVADA  
 2725 WEST CHARLESTON BOULEVARD  
 89102  
 DETAIL SHEET & STREET LIGHT NOTES  
 EAST CHARLESTON BLVD  
 EXPRESS LAKE FOOD STORE  
 Section 32 Township 20 South Range 42 East  
 MDB & M  
 Clark County Nevada